



TCU
LETTERMEN'S
HALL of FAME



6:30 p.m.
October 2, 1970

Colonial
Country Club

PROGRAM

Invocation

Ray Taylor

Welcome and Introductions

Raymond (Bear) Wolf

Master of Ceremonies

Explanation of Hall of Fame

Mason Mayne

President, TCU Ex-Lettermen's Association

Presentation of Hall of Fame Honorees

Introduction of Colonel William V. Rattan

Dr. W. L. Parker

Introduction of Herman Clark

Mattie Bell

Introduction of Allie White

Abe Martin

Introduction of I. B. Hale

David O'Brien

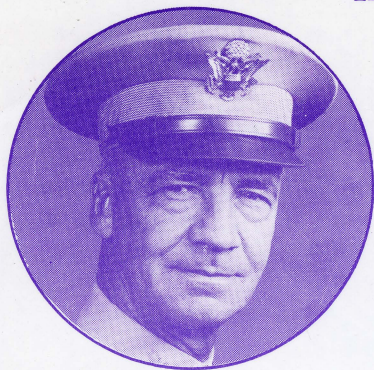
Introduction of Mike Brumbelow

Dutch Meyer

Adjourn

Raymond (Bear) Wolf

1970 TCU LETTERMEN'S HALL OF FAME INDUCTEES



COL. WM. V. RATTAN (Class of '13)

Lettered in football in 1909-10-12-13. Captain of the 1913 football team. Called the "greatest end-around artist" of his day. Also earned four letters in baseball and track. Began his military career in 1917 and after 34 years retired from the U. S. Army as a full Colonel.

HERMAN CLARK (Class of '28)

Outstanding quarterback in 1923-24-25-26. Captain of 1925 team. All-SWC selection in 1925-26. Lettered in baseball in 1924-25-26-27. Served as Athletic Director of Fort Worth Public Schools from 1945 to 1968, when he retired. Largely responsible for the excellent athletic program in the Fort Worth Public School system.



ALLIE WHITE (Class of '39)

Veteran assistant football coach for Purples. Defensive line coach since 1950 and has turned out several All-Americans, who went on to pro stardom. Three times all-state lineman as a schoolboy lineman at Masonic Home. Top lineman on TCU's 1938 National Championship team. After graduation, was top high school mentor before returning to Frogland.



I. B. HALE (Class of '39)

Captain of 1938 undefeated National Championship team. All-American and unanimous All-SWC tackle in both 1937 and 1938. A "60 minute man" at left tackle all three varsity years. Very active in Southwest athletics since playing days. Presently the Manager of Industrial Security at General Dynamics, Fort Worth Division.



MIKE BRUMBELOW (Class of '30)

Lettered in football in 1927-28-29. Captain of TCU's first Southwest Conference championship football team. All-SWC lineman in 1928 and 1929. After graduation, he coached at Lufkin, El Paso, TCU and Mississippi. In 1953, named head coach and athletic director at Texas Western College. Voted "Coach of the Year" in the Border Conference in 1956. Inducted in El Paso's Hall of Fame in 1965.



TCU
LETTERMEN'S
HALL of FAME