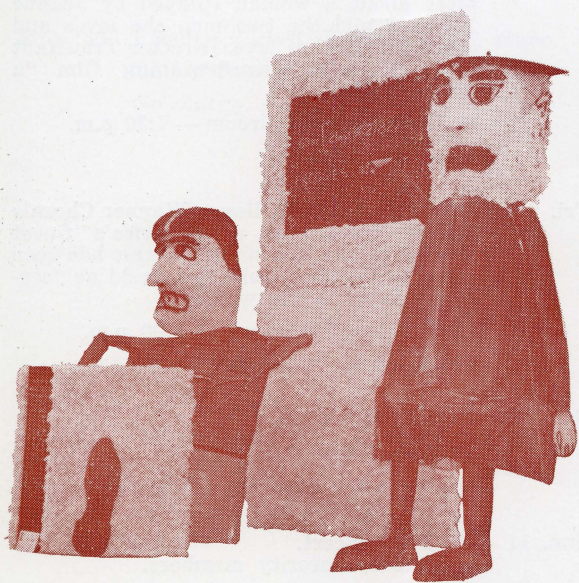


TCU EVENTS

CALENDAR

October and November 1964



*Fall brings Homecoming to the TCU campus,
and with it student displays which will be on
view to the public, October 30, 31.*

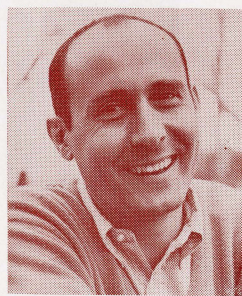
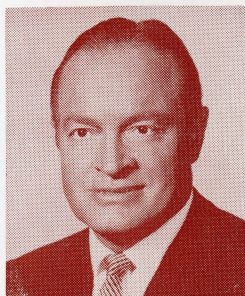
DAILY SCHEDULE OF EVENTS AT TCU

October and November, 1964

October

- Thurs. 1 **Travel Film.** Co-sponsored by TCU and the Fort Worth Star-Telegram, features three color films "Capitols of Europe," "Gateway to Europe" and "To Catch A Dream."
Ed Landreth Auditorium — 8:00 p.m.
No charge
- Sat. 3 **TCU vs. Arkansas**
Amon Carter Stadium — 1:30 p.m.
- Tues. 6 **Fine Film: "Ugetsu" (Japanese).** Francois Truffaut's acknowledged masterpiece about a woman (played by Jeanne Moreau) and the two men she loves and destroys with her love. Director Trauffaut has called the award-winning film "a hymn to life."
Student Center Ballroom — 7:30 p.m.
Admission 25c
- Fri. 9 **TCU Select Series: Roger Wagner Chorale** Widely recognized as America's finest singing group, the famed Chorale has been referred to by Leopold Stokowski as "second to none in the world."
Daniel-Meyer Coliseum — 8:00 p.m.
Public \$2.00 — Students \$1.50
- Sat. 10 **Parents Week-end.**
TCU vs. Texas Tech
Amon Carter Stadium — 7:30 p.m.
- Sun. 11 **Mu Phi Concert.**
Concert by sorority members.
Ed Landreth Hall Room 103, 3:00 p.m.
No charge
- Tues. 20 **Fine Film: "Triumph of the Will." (German).** A Southwestern Premiere, this is an overwhelming powerful documentation of Hitler's Nuremberg rallies. Directed by Leni Riefenstahl, a Hitler aide.
Student Center Ballroom — 7:30 p.m.
Admission 25c.

- Fri. 23 and Sat. 24 **"Look Homeward Angel"**
TCU Little Theatre — 8:00 p.m.
Public \$1.50 — Students 50c
- Sat. 24 **TCU vs. Clemson**
Amon Carter Stadium — 2:00 p.m.
- Tues. 27 **TCU Select Series: Leopold LaFosse**
A distinguished American violinist from Texas whose gifted performances have enthralled audiences across the country.
Ed Landreth Auditorium — 8:00 p.m.
Admission — \$1.50
- Wed. 28 thru Sat. 31 **"Look Homeward Angel"**
TCU Little Theatre — 8:00 p.m.
Public \$1.50 — Students 50c
- Thurs. 29 **TCU Homecoming**
Official Opening: Bonfire, pep rally and presentation of Homecoming and Coming Home Queens. Student displays on view in front of Student Center.
Public invited.
- Fri. 30 **TCU Homecoming.**
Student displays on view (Student Center quadrangle) Open to public.



Bob Hope-Henry Mancini Show, Oct. 30

- Fri. 30 **TCU Homecoming**
Bob Hope-Henry Mancini and Orchestra Show
Daniel-Meyer Coliseum — 8:00 p.m.
Public \$3.50 — Students \$2.50
- Sat. 31 **TCU Homecoming**
TCU vs. Baylor
Amon Carter Stadium — 2:00 p.m.
Ceremonies recognizing 1938 National Championship Team; Presentation of Homecoming and Coming Home Queens.

November

- Tues. 3 **Fine Film: "Old and New" (Russian).** Sergei Eisenstein's heroic tale of a peasant woman and her courage in struggling against superstition, greed and hostility. From the immortal director of "Potemkin."
Student Center Ballroom — 7:30 p.m.
Admission — 25c
- Thurs. 5 **Travel Film.** Co-sponsored by TCU and the Fort Worth Star-Telegram.
Ed Landreth Auditorium — 8:00 p.m.
No charge
- Tues. 10 **Fine Film: "Summerskin" (Argentine).** Second film of director Leopoldo Torre- Nilsson. The story of a bored young girl who is persuaded to spend a summer with a dying son of a friend. It leads to a somewhat unforeseen climax.
Student Center Ballroom — 8:00 p.m.
Admission — 25c
- Wed. 11 **Lecture-recital.** Selma Epstein, noted pianist who specializes in performance of contemporary keyboard music.
Ed Landreth Auditorium — 3:00 p.m.
No charge
- Sat. 14 **TCU vs. Texas**
Amon Carter Stadium — 2:00 p.m.
- Tues. 17 **TCU Symphony Orchestra Concert**
Ed Landreth Auditorium — 8:15 p.m.
No charge
- Wed. 18 **Phi Mu Concert.** Program of American Music by fraternity members.
Ed Landreth Auditorium — 3:00 p.m.
No charge
- Wed. 18 **TCU Select Series: Sander Vanocur** "Politics in an Election Year." Mr. Vanocur is White House correspondent for NBC-TV and radio, and one of the nation's most popular news analysts and commentators.
Ed Landreth Auditorium — 8:00 p.m.
Admission \$1.50

- Sun. 22 **Faculty Recital. Ralph Guenther, flute, and Keith Mixson, piano**
Ed Landreth Auditorium — 3:00 p.m.
No charge
- Tues. 24 **Fine Films: "Orpheus" and "Blood of a Poet."** Presented in honor of Dir. Jean Cocteau, "Orpheus" is his adaptation of the Greek legend of Orpheus and Eurydice. Set in modern-day France, Cocteau's version of the legend is surreal and dream-like, not unlike his earlier "Blood of a Poet."
Student Center Ballroom — 7:30 p.m.
Admission 25c
- Wed. 25 **Lecture. Harold Rosenthal, editor of Opera,** a London publication. Well-known writer on opera.
Ed Landreth Auditorium — 3:00 p.m.
No Charge
- Mon. 30 **Faculty Recital. Tully Moseley, piano**
Ed Landreth Auditorium — 8:15 p.m.
No charge

PLEASE READ! If you do not wish to receive the TCU Events Calendar, if you receive more than one copy, or if your address is incorrect please let us know. Clip your address label from this folder and return it, with correct information, to: TCU Events Calendar, Box 30776, Texas Christian University, Fort Worth, Texas 76129. *Thank you.*

TCU Events Calendar

Box 30776

Texas Christian University

Fort Worth, Texas 76129

RETURN REQUESTED

Non-Profit Org.
U. S. Postage
Paid
Fort Worth, Texas
Permit No. 2143

Library
Archives

FB