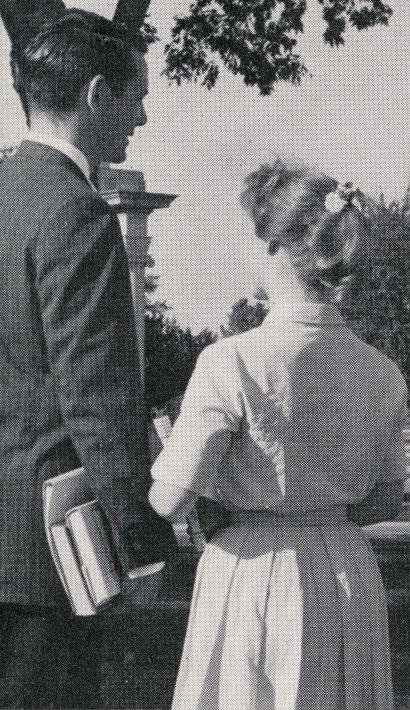


TCU ARCHIVES

The Campus Ministry

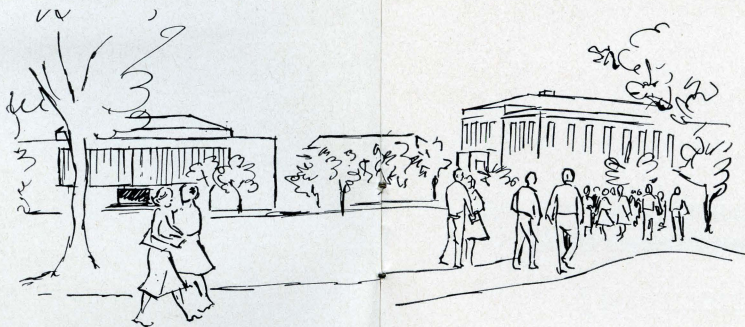
21

# The Campus Ministry



TEXAS  
CHRISTIAN  
UNIVERSITY





## The Campus Ministry at Texas Christian University

*The Campus Ministry* is one of the ways in which Texas Christian University seeks to achieve the Christian objectives to which it is committed. Chancellor M. E. Sadler has said: "It is not sufficient to have religion merely as one stone in the total educational building. It must be the overarching beam, the focalizing center."

The Campus Ministry at T.C.U. designates first of all my office and my services as chaplain or minister to the university, which are available to students and faculty. My office (room 106, M. E. Sadler Hall) is always open to you, and I would welcome your coming by simply for acquaintance or for counseling. I invite you to worship in the beautiful Robert Carr Chapel at 11 o'clock on Tuesday mornings. These services are open to all the university on a voluntary attendance basis. They are non-denominational and are meaningful and inspiring. I invite you to participate in the dormitory devotionals, Religious Emphasis Week, and many other special programs throughout the year.

The Campus Ministry at T.C.U. also refers to programs maintained by several church communions through student religious organizations on campus and to the clergymen who serve the students and faculty of their religious preferences. This brochure will introduce both the men and the programs. I am happy to call these men my colleagues, and they are eminently qualified to minister to you.

The university hopes you will deepen the roots of your own religious heritage while you are here.

Sincerely,

*James A. Farrar*

THE REV. JAMES A. FARRAR  
*Director of Religious Activities*  
*Texas Christian University*





THE REV. ROY RAY, JR.  
*Director, Baptist Student Union*

## Baptist Student Union

*Believing that* the well-rounded student will grow spiritually, mentally, socially, and physically, the Baptist students of the past few years have worked together with this objective in mind thru the Baptist Student Union. The BSU is not just another organization nor is it an exclusive group; all who seek a better life are welcome to participate in whatever way their time and interests will allow.

The BSU activities are planned and carried out by this year's students to meet this year's needs on the campus at TCU thru the elected officers (Executives Council) and their committees and helpers (Greater Council), and other interested students. The current program includes a daily noonspiration at 12:05 p.m. in Room 215, Brown-Lupton Student Center, and a Wednesday evening Vespers at 5:45 in the chapel of University Baptist Church, in addition to small group Bible studies, mission activities, retreats, socials, and fellowships.

The Minister to Baptist students at TCU, Roy Ray, assists the councils in planning the program and is a friend to all who need a friend during college days. *Mr. Ray may be reached at his office in University Baptist Church Chapel across from Sherley Hall, WA 7-2087, or at his home, 2901 Fuller, WA 7-7018.*



THE REV. GORDON MILTENBERGER  
*Episcopal Chaplain to Students*

## The Canterbury Association

*The Canterbury Association* is a fellowship open to all members of the University, operating under the auspices of the Episcopal Church.

The Association seeks to:

1. enlarge the understanding of the Christian religion—to provide for the adult understanding of the Faith which will correspond to the maturing mind of the college student.
2. make plain the fact that the Christian Faith must be the setting and substance of every man's life, whatever his life's work may be.
3. provide the forms of worship of the Episcopal Church, as experienced in the parish church from which the students come, and to which as college graduates they will return.

All gatherings of Canterbury Association take place at St. Edward's Chapel—Canterbury House, 2715 Cockrell St., one block east of Ed Landreth Auditorium. Canterbury meetings are at 6:00 p.m. on Wednesdays. The Holy Communion is offered daily: Monday-Friday, 7:00 a.m., Saturday, 9:00 a.m., Sunday, 9:30 a.m. Evening Prayer is recited daily at 5:30 p.m.

*The Chaplain is in residence at Canterbury House, 2715 Cockrell St., WAlnut 3-5747.*





MR. DONALD L. GORE, C.S., *Advisor,*  
*Christian Science Organization*

## Christian Science Organization

*Christian Science Organization* is composed of students and faculty at TCU who are interested in Christian Science. It supplements activities of local Christian Science Churches and Reading Rooms in reaching students of Christian Science at the University.

Participation in the Organization encourages a high social standard, helps members acquire friends with similar aims, and enables attendants to learn more of the teachings of Christian Science.

Weekly meetings each Wednesday at 6:30 p.m. in Room 217 of the Student Center include a period in which students share accounts of healing and solution of other problems through their understanding of God.

Once a year, the Organization sponsors a lecture by a member of The Christian Science Board of Lectureship of The First Church of Christ, Scientist, in Boston, Massachusetts. All members of the campus community are welcome to attend the lecture and the weekly Organization meetings.

Further information may be obtained from advisors: *Mrs. Frankie L. Thomas, 2259 Lipscomb, Walnut 4-7916 and Mr. Donald L. Gore, 3844 Hill Top Road, Walnut 6-3664, Edison 6-5223.*



THE REV. RALPH STONE  
*Minister to Students,*  
*University Christian Church*

## Disciples Student Fellowship

*Disciples Student Fellowship* is the campus church program for students of the Christian Churches. The students and their program are an integral part of the life and congregation of University Christian Church. Every resource and facility of this church is made available to the students, thus providing for them a church-away-from-home.

The program and schedule pertaining especially to students is as follows.

### *Sunday Mornings:*

9:30—Morning Worship, Sanctuary  
Special College Classes

10:30—College Coffee Hour, Fellowship Hall

11:00—Regular College Classes  
Morning Worship, second service

### *Sunday Evenings:*

6:50—Student Congregation Service of Worship

7:45—Evening Fellowship Program

### *Mid-Week:*

Numerous Small Groups relating to such interests as Theology, Social Action, Athletics, Fine Arts, and the Chorale.

You are cordially invited to University Christian Church and the Student Congregation.





PASTOR DOUGLAS R. OLSON  
*Trinity Lutheran Church  
Campus Representative*

## The Lutheran Association

*The Lutheran Association* is the Lutheran Church's response to the opportunity to serve students from National Lutheran Council congregations now attending TCU.

The basic purpose of LSA is to help each student develop a Christ-centered orientation to higher education. Christ said: "I am the way, the truth and the life." The task of LSA is to make this truth relevant to the maze of disciplines in modern education.

To accomplish this objective Lutheran students on the TCU campus are urged to associate themselves with local Lutheran congregations and affiliate themselves with the LSA.

Meetings of the group will be scheduled at the most convenient time possible. Counseling opportunities will also be made available for the Lutheran students while attending TCU.  
*For counseling appointments call PE 2-1439.*



THE REV. KEN GOSSELIN  
*Campus Minister, Wesley Foundation*

## Methodist Wesley Foundation

*A student* once said, "If you're not religious before you come to college, you won't be until you get out." We might add, "... and probably not then," if his statement is true. Why is the Church concerned to be at work on the campus? Is it primarily to protect the young church member from the onslaught of new ideas and values? Is it to spy on him or her in the dorm, in the classroom, on a date,—and to try to straightjacket his curiosity or desires? Let us hope not.

The church must be in the midst of the university community because the Christian faith has to do with all of life. And just as we don't simply "go to college," but we are the college, so also we don't just "find" the church on the campus, but *we are to be* the church.

The Wesley Foundation (Methodist Student Movement) seeks to participate in the adventure of higher education with a responsible response of grateful worship of the One who is in charge of things and loving concern for the neighbor who needs us and whom we need. In so doing, we co-operate with other groups who identify themselves as part of the continuing Body of Christ.

*Regular Meetings:* Wed., 5:45 p.m., Wesley Foundation House, 2824 W. Lowden.





REV. THOMAS J. CONNELLAN, C.S.P.  
*Director of Catholic Student Center  
and Chaplain to TCU Newman Club*

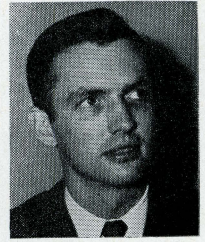
## The Newman Club

*The Newman Club* is the heart of Catholic student life and thought at T.C.U. The Catholic Student Center, on Princeton Street just north of Robert Carr Chapel, is the home of the Newman Club.

There, under the direction of Father Thomas J. Connellan, of the Paulist Fathers, every phase of Catholic life is available to the student at T.C.U. Whether it be active participation in the liturgy (Mass is offered daily and Sunday), joining a marriage or theology seminar, helping develop the Newman Club program, or attending one of the monthly lectures, it is possible for each Catholic student to develop a mature and active religious life.

The Newman Club meets every Wednesday evening at 7:30 p.m. Its meetings are always open to all Catholic students and their guests. Mass is offered daily at 4:30 p.m., Tuesday and Saturday at 11:00 a.m., and Sunday at 9:30 a.m. Confession before Mass or by request.

*Contact: Rev. Thomas J. Connellan  
Catholic Student Center-T.C.U.  
2916-18 Princeton Street  
Fort Worth 9, Texas  
Phone: Walnut 7-2782*



THE REV. W. F. HENNING, JR.  
*Associate Minister, St. Stephen  
Presbyterian Church and Director  
of Presbyterian Student Association*

## Presbyterian Student Association

*Presbyterian Student Association* at T.C.U. meets each Wednesday during the school year at 5:30 p.m. at St. Stephen Presbyterian Church, three blocks from the campus. Supper is served at each meeting and is followed by a program dealing with Presbyterian Theology and its implications in the social, political, and ethical affairs of students. The group exists to provide an opportunity for Presbyterian students at T.C.U. to continue participation in the life of the Presbyterian church during college years, to promote an increasingly articulate grasp of the Christian faith, and to provide fellowship for those who participate.



## In Addition to the Religious Organizations

maintained by church communions there are other religious organizations of a non-denominational or inter-denominational nature which you will discover are active in student life. Refer to the "Frog Horn" for a complete description.

If you are of a religious preference or membership not listed in this brochure you will probably find that there are congregations of your preference in the community. All of these congregations will welcome you.

During 1961-1962 when the Rev. James A. Farrar is on a leave-of-absence, Mrs. Louis A. Saunders, in the office of the Director of Religious Activities, will be glad to assist you in this respect.

*The initial meetings* of the organization designated in this brochure will be Sunday, September 17. The occasion is "First Call" during Howdy Week. Time and place will be announced later.

