

LET'S GO TO THE SUGAR BOWL

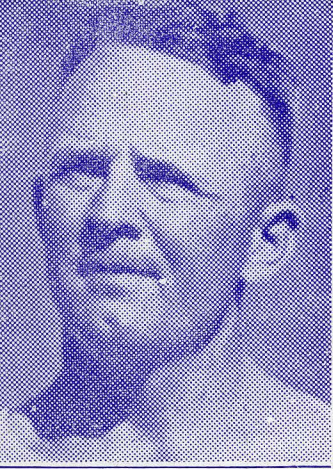


FORT WORTH LIONS CLUB

Fourteenth Annual

FROG DAY

LUNCHEON, Tuesday, December 17, 1935



▼
L. R. MEYER
Head Coach

The man whose genius, strategy, patience, and love for the boys has meant more than anything else in bringing the Frogs to the front.

STRATEGY MAP



END ZONE

Don't let any one get past you here. If they come down open, shake hands with them. Go in and sit down at a table.

DANGER ZONE

Gotta be careful here. No tricky stuff. Use straight fork play only. Watch that cocktail slipping down the vest. Get a pun off on first or second down to relieve the pressure.

RESTRICTED ZONE

Open up a notch here. Don't get too involved. Don't pass up anything. On defensive, watch that chicken wing-back slipping off the end of the plate.

OFFENSIVE ZONE

Feel out the opposition. See if there is a weakness down the middle. Use bread for power plunges. Quick-kick the stuffing out of them.

SCORING ZONE

Pour it to 'em, strong and black. Sugar, but no cream. Three men deep pass should be gravy. Spin off-tackle yarns and block clean. If forced to kick, kick to head waiter in the corner.

ZONE OF GREATEST RESISTANCE

Everything is crowded into small area, but ice cream should knock 'em cold (even if they're expecting it). Try to get it over as soon as possible, so you can enjoy your indigestion while the stands say speeches.

END ZONE

This is where you've been trying to get. Now grab an elevator for Main St.



PROGRAM

11:45 Gates Open

12:00 Crowd Rushes In

12:15 .. Team Enters, Band Plays, Crowd Stands

12:30 Pie and Hot Air

12:45 Hot Toasts

1:00 Peppy This and Peppy That

1:15 Who's Who in Frog Town

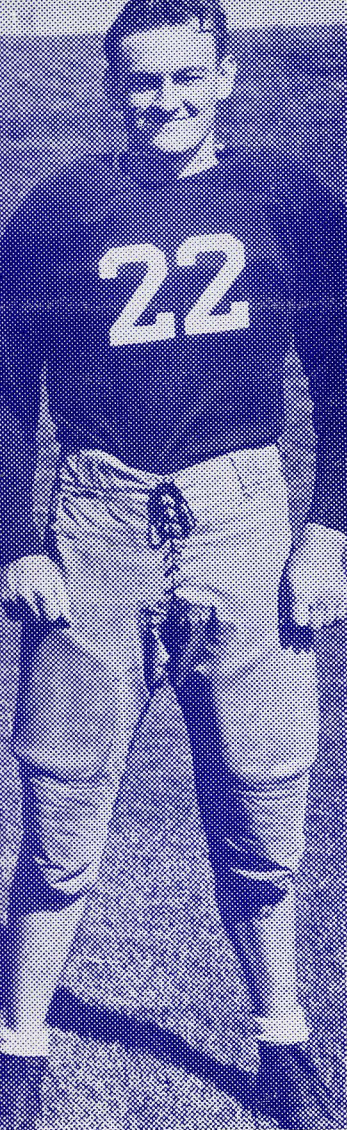
1:30 Distribution of Prizes

1:35 Adjourn to Meet in Sugar Bowl

R. B. (BEAR) WOLF
Line Coach
Athletic Director

Bear has won national recognition as a maker of great lines and All-American linemen. Opposing teams can tell you how good he is.





▼ **DARRELL LESTER**
Captain

All-American for two years.
He stands head and shoulders
above all other centers.

1935 Schedule and Scores

T. C. U.	41	Howard Payne	0
T. C. U.	28	North Texas Teachers	11
T. C. U.	13	Arkansas	7
T. C. U.	13	Tulsa	0
T. C. U.	19	Texas A. & M.	14
T. C. U.	27	Centenary	7
T. C. U.	28	Baylor	0
T. C. U.	14	Loyola (New Orleans)	0
T. C. U.	28	Texas	0
T. C. U.	27	Rice	6
T. C. U.	14	S. M. U.	20
T. C. U.	10	Santa Clara	6
T. C. U.	?	L. S. U.	?

(Sugar Bowl, Jan. 1)



ROSTER

No.	Name	Home Town	Pos.
1—	Linne, Aubrey	Lavernia	LT
2—	Brown, Vernon	San Antonio	Q
3—	Walker, Lincoln	Graham	RT
5—	Kline, George	Gregory	LH
6—	McClure, Harold	Fort Worth	RH
7—	Stokes, Winford	Fort Worth	LE
8—	Lawrence, Jimmy	Harlingen	RH
9—	Kellow, Tracy	Lufkin	RG
11—	Groseclose, Wilson	Abilene	RT
12—	Cowan, Clifton	Lampasas	RT
13—	Needham, Charley	Fort Worth	RE
14—	House, Alan	Fort Worth	Q
15—	Ellis, Drew	Perryton	LG
16—	Montgomery, Vic	Ozona	Q
17—	James, Ned	Fort Worth	RG
19—	Seybold, Elmer	Fort Worth	LG
20—	Harrell, Bob	Fort Worth	RH
21—	Diggs, Melvin	Weslaco	RE
22—	Lester, Darrell (C)	Jacksboro	C
23—	Roberts, Glenn	Fort Worth	F
24—	Godwin, Manuel	Hot Springs, Ark.	LT
25—	Roach, Walter	Fort Worth	RE
26—	Phares, Elliott	Dallas	C
30—	Walls, Will	Little Rock, Ark.	LE
33—	Manton, Taldon	Fort Worth	F
34—	Fulenwider, Harold	Waldo, Ark.	LH
35—	Rogers, Glenn	Mart	LG
36—	McCall, Scott	Fort Worth	LH
37—	Peavy, Charles	Lufkin	RG
38—	Harrison, Wilbur	Temple	LG
39—	Meyer, L. D.	Waco	RE
41—	Dunlap, George	Fort Worth	LE
43—	Holt, Solon	Henderson	RT
44—	Mayne, Mason	Tyler	RG
45—	Baugh, Sam	Sweetwater	Q
46—	Nelson, John	Fort Worth	RT
47—	Snow, Paul	Rockwall	RE
48—	McClanahan, Lacy	Fort Worth	F
49—	Tittle, Jack	Fort Worth	C
50—	Clark, Rex	Longview	LH
51—	Blackmon, Linnon	Abilene	RH

JIMMY LAWRENCE Sub-Captain

Critics raved about his powerful running. He doubled the effectiveness of the T. C. U. attack.

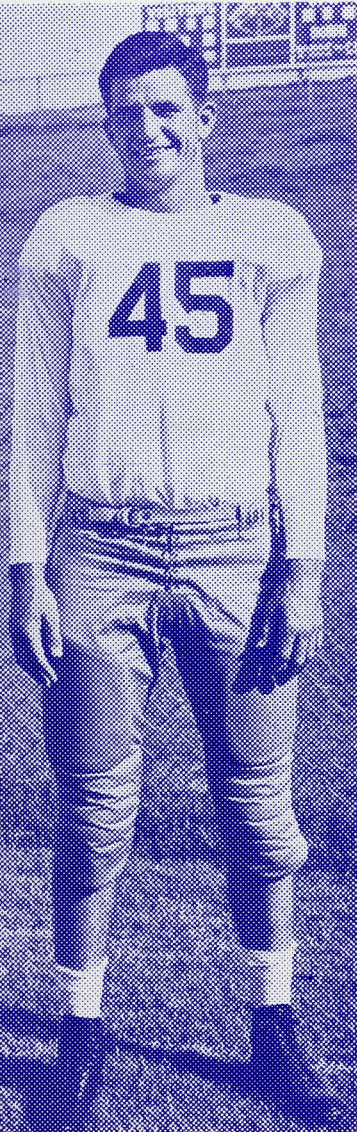


Captain—Darrell Lester, Center
 Sub-Captain—Jimmy Lawrence, Halfback
 Head Coach—L. R. "Dutch" Meyer
 Line Coach—Raymond B. "Bear" Wolf
 Freshman Coaches—Howard Grubbs, Ben Boswell

ALL AMERICAN

SAM BAUGH

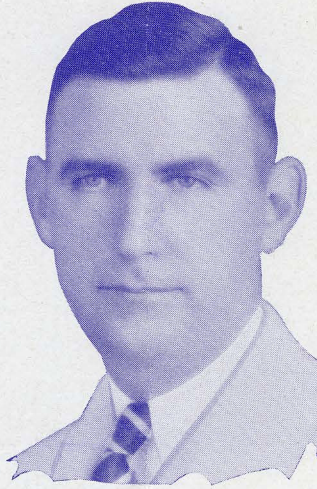
The greatest passer in football, and a whale of an all around player. He'll be back in '36.



At the end of each football season, each sports writer retires into a corner and re-reads the mass of mis-information he has written during the fall. He eventually comes forth and, either apologetically or grandiosley, proffers his list of the best players at each position for the dying season. As a usual thing, his selections are wrong and the whole thing must be taken with several pounds of the very best available salt. Nevertheless, they reflect a great deal of ability and a lot of glory, so we were proud to see so many Frogs named or nearly named. No one could agree on which ones, so, in all, the whole team was mentioned.

Lester, of course, was almost unanimous. Sam Baugh, "the greatest passer in the world," was named on most and apologized on the rest. In fact, we got to skipping center and quarterback and seeing what other Frogs were named. While one fellow put Harrison as his first reserve guard, another said Kellow was just about the best. Groesclose had his elbow in several sports writers' eyes. And every one was trying to figure out how three All-American ends could be on one squad. Roach, Meyers and Walls all made different All-Conference teams and got national recognition. (And if you don't think Needham is good, just ask him.) Squarehead Lawrence, "the hardest running back in the country," had every one, including the pickers, wondering why he wasn't chosen on more teams, while Manton set the coast critics on their ear with his ball handling on the spins.

We'd like to suggest our band for some "all" honors. They're tops, from Prof. Sammis, the highstepping Weldon Allen, Director Gon Gillis, right on down to—well, we don't want to mention Wheeler's name.



RALPH L. McCANN

*President
Fort Worth Lions Club*

TO OUR TEAMS



Welcome! to this, our fourteenth annual Frog Day Party, and again we say, "We are proud of you; proud of the fine spirit of sportsmanship that has characterized your play as individuals and as a team; proud of the fact that your brilliant performance on the gridiron has achieved greatness for you that sheds glory on yourselves, your school, your city, and your state."

R. L. McCANN,
President Lions Club



FROG DAY CHAIRMEN

DR. I. P. BARRETT, General Chairman
JULIEN C. HYER, Toastmaster

PRIZE COMMITTEE

O. A. Brightwell

PRINTED PROGRAM

Don Cowan

PUBLICITY COMMITTEE

Herndon and Belew

MUSIC

Gene Cagle

RECEPTION

George Adams

DECORATIONS

R. E. Cox, Jr.

TICKETS

Gib Wilson



THE END