

FORT WORTH  
STAR-TELEGRAM

T·C·U·

**Sugar Bowl  
Specials**

*Let's go,*



*Fans!*

**NEW ORLEANS  
NEW YEAR'S DAY**





# *Fort Worth Star-Telegram* **TEXAS CHRISTIAN UNIVERSITY** **Sugar Bowl Specials**

**Via THE TEXAS AND PACIFIC RAILWAY**

**MILES SHORTER ★ HOURS QUICKER**

LEAVES

**FORT WORTH**

**Monday, Dec. 30, Tuesday, Dec. 31**  
**at 8:00 p. m.**

ARRIVES

**NEW ORLEANS**

**10:00 NEXT MORNING**

Tickets Also Good On

**THE FAMOUS TEXAN**

Which Leaves Fort Worth 5:05 P. M. Daily

Arrives New Orleans 8:00 A. M.

Return Special Leaves New Orleans at 8:00 P. M. Wednesday

Arrives Fort Worth at 9:30 A. M. Thursday, January 2nd

Return Tickets will also be honored on regular trains  
on the following schedules:

	Texas-Colorado Ltd.	The Texan
Leave New Orleans	1:00 P. M.	10:15 P. M.
Arrive Fort Worth	8:40 A. M.	1:15 P. M.

**\$22<sup>10</sup>**

**ROUND TRIP**

(Limit Jan. 31st)

**GOOD IN PULLMANS**

Berth Extra



**ONE WAY PULLMAN FARES**

Standard Tourist  
Pullman Pullman

Lower	\$ 4.25	\$2.50
Upper	3.40	2.00
Compartment	12.00	
Drawing Room	15.00	

**\$11<sup>26</sup>**

**ROUND TRIP**

(Limit 10 Days)

Good Only in Coaches  
and Chair Cars

**Over Night Between Fort Worth and New Orleans**

**Football Tickets Assured Everyone Who Travel by Train---Buy Tickets Early---Avoid the Rush**

**For Reservations**  
**Write, Phone or Call**

**FORT WORTH STAR-TELEGRAM**

**MR. A. L. SHUMAN**  
**Phone 3-2301**





ALL ABOARD FOR

# SUGAR BOWL



New Orleans, New Year's Day

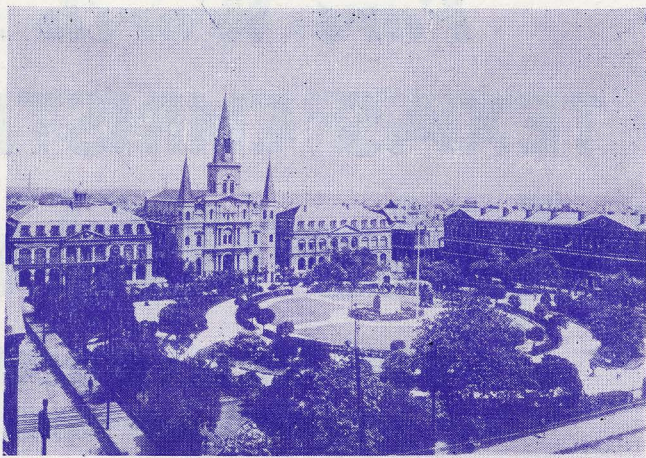


Famous Canal Street with Modern New Orleans on the Left  
and Old New Orleans on the Right.

★ **T**HERE'S a rare treat in store for football fans when T. C. U. tangles with L. S. U. in the annual Sugar Bowl Football Classic at New Orleans on New Year's Day. Ranked by outstanding sports writers as two of the most powerful elevens in the country, these teams promise football action that will go down in history!

The Texas and Pacific Railway offers the shortest, most direct route between Fort Worth and New Orleans. Fast, overnight schedules make it possible for T. C. U. fans to leave Fort Worth in the evening, arrive New Orleans the next morning. Return schedules are equally fast and convenient. Travel the Texas and Pacific route that is **MILES SHORTER . . . HOURS QUICKER!**



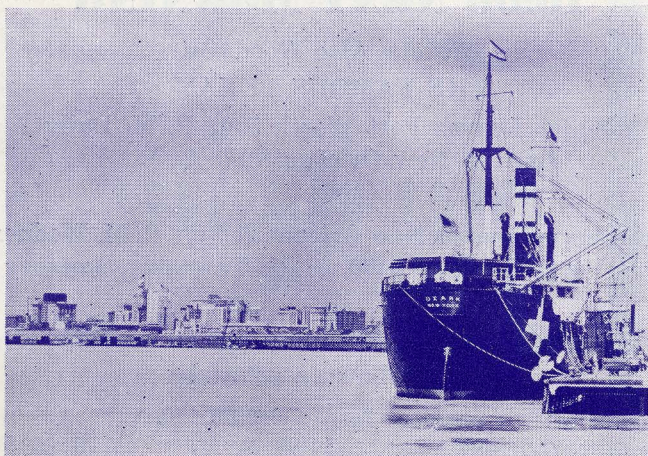


The Place D'Armes, in the Heart of Old New Orleans

# NEW ORLEANS

**"Paris of America"**

"America's most Interesting City", the "Crescent City" and the "Paris of America", are only a few of the appellations that have been coined in an effort to find a single phrase or name to convey some idea of the wealth of interest that New Orleans holds for the visitor.



The New Orleans Skyline

## MAKE RESERVATIONS EARLY

In order to assure choice accommodations, we urge you to make your reservations as early as possible. In making reservations, please state exact accommodations desired. A sufficient number of football tickets has been secured to assure everyone who travels over The Texas and Pacific a choice seat for the Sugar Bowl Game.