

**Star-Telegram-T. C. U.**  
**SUGAR BOWL SPECIALS**

**JAN. 1st**



**1936**

**T. C. U. vs. L. S. U.**

*En Route*  
**FORT WORTH - NEW ORLEANS  
SUGAR BOWL**

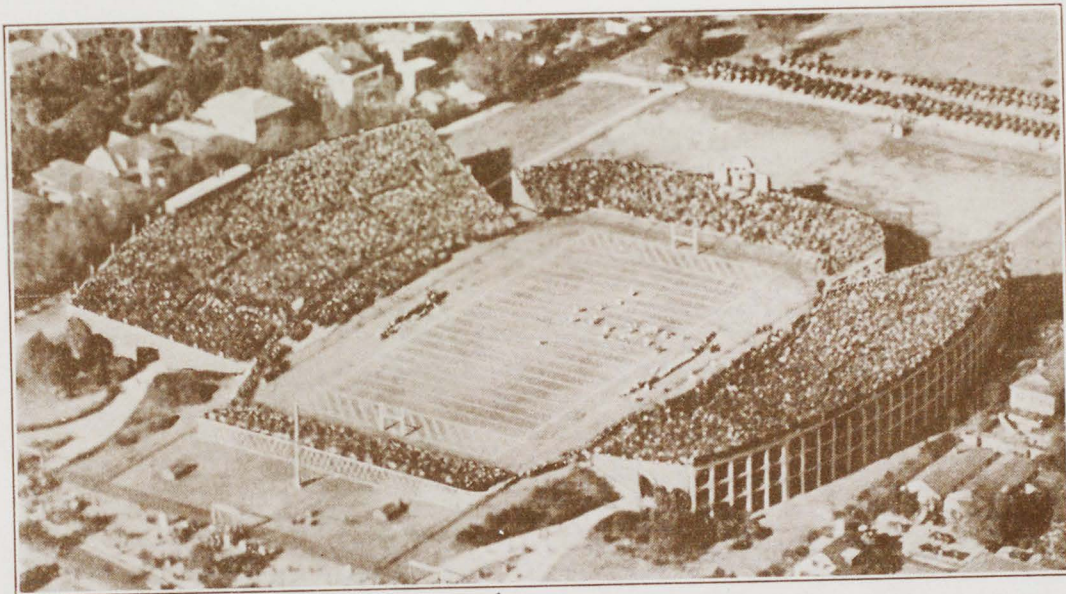
T. C. U.



L. S. U.

THE "FROGS"

*Via*  
THE TEXAS AND PACIFIC RAILWAY



THE SUGAR BOWL  
NEW ORLEANS, LOUISIANA

M E N U

CLUB BREAKFAST

No. 3, 75c per Person

CHOICE

Grapefruit Orange Juice Baked Apple  
Oatmeal or Dry Cereal  
with Cream

CHOICE

Boiled Salt Mackerel, Boiled Potato  
Ham and Eggs (2) or Bacon and Eggs (2)  
Calf's Liver and Bacon  
Farm Sausage, Fried Apple

Toast Muffins Rolls  
Tea Coffee Cocoa Milk

No. 1, 50c per Person

CHOICE

Orange Juice  
Grapefruit Baked Apple  
Oatmeal or Dry Cereal  
with Cream

Muffins Toast Rolls  
Tea Coffee Cocoa Milk

No. 2, 60c per Person

CHOICE

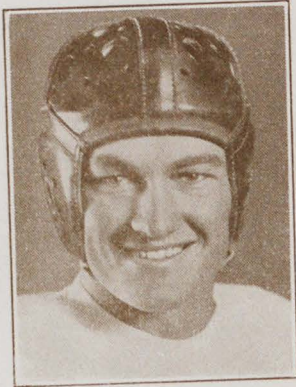
Orange Juice  
Grapefruit Baked Apple  
Oatmeal or Dry Cereal  
with Cream  
Eggs (2) any Style  
or  
French Toast with Preserves

Muffins Toast Rolls  
Tea Coffee Cocoa Milk

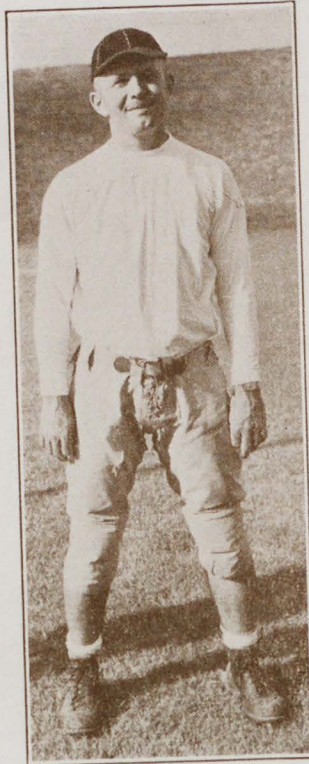


LTR.P

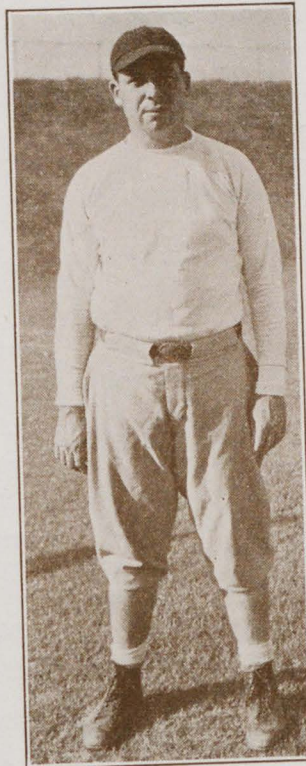
LTR.P



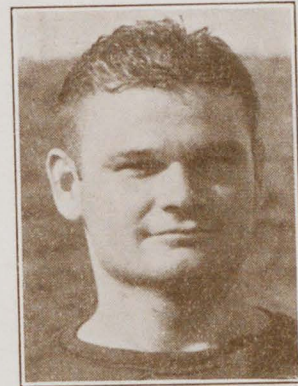
CAPTAIN DARREL LESTER



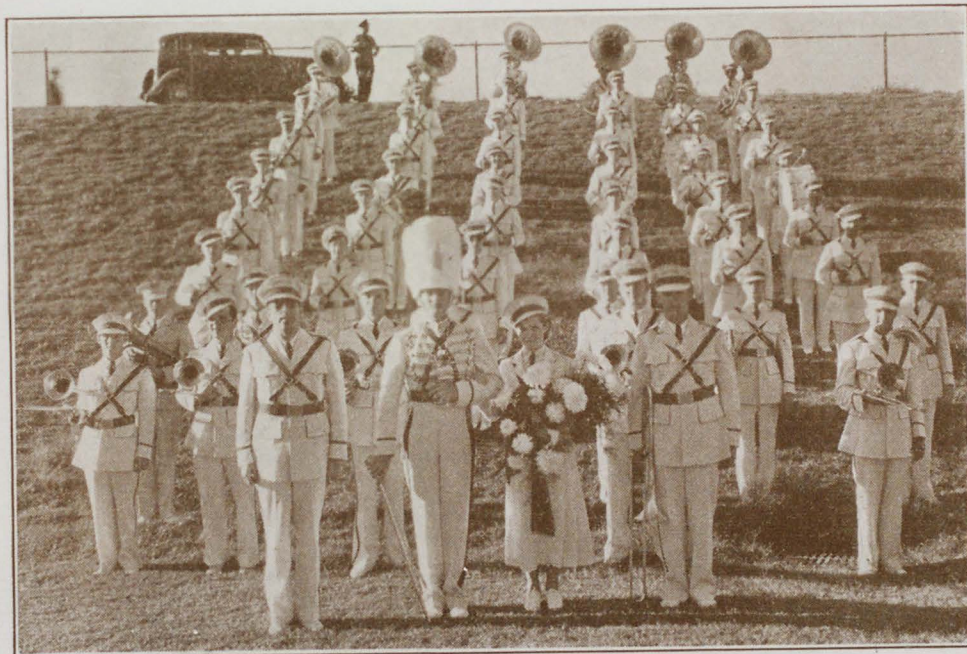
COACH "DUTCH" MEYER



COACH "BEAR" WOLF



SUB. CAPT. LAWRENCE



TEXAS CHRISTIAN UNIVERSITY BAND



FORT WORTH STAR-TELEGRAM

THANKS, A MILLION!



ROUTE OF THREE FAMOUS TRAINS

*The Texan*

*Sunshine Special*

*Louisiana Limited*

