

Hence, a prolonged shortage of fuel would force many such plants to curtail their operations if not close.

Officials said milk production might be seriously affected in areas where dairymen are dependent upon feed supplies shipped in by mail.

They said a long stoppage of coal production would make an

PEMBERTON

Continued From Page 1.

merged with the Fort Worth National Bank in 1927. At one time he was owner of a furniture company which bore his name and he held interest in Fakes & Company and the Fort Worth Life Insurance Company.

His happiest days, however, Mr. Pemberton once recalled, were when he was actively engaged in the cattle business, and the title he liked above all others was that of "cow man." He was at one time associated with W. E. Connell, Fort Worth banker and former West Texas rancher, in what was known as the Syndicate E. Ranch, and later with John Scharbauer on the same ranch. He also was interested in the JAL Ranch, which spread across the Texas line into New Mexico. He had a steer ranch holding on the Powder River in Montana.

Mr. Pemberton was married in October 1887 to the former Miss Anne Moseley, whom he met in Paris, Texas, shortly after his family left Missouri. She died in 1940 and since that time he has made his home with his children.

He was a member of First Baptist Church here, and was a Mason, Shriner and Knight Templar. He had belonged to the Fort Worth Club and River Crest Country Club.

Survivors beside the son are three daughters, Mmes. Earl C. Axtell, and Rowena Coke of Fort Worth and Mac W. Neill of La Jolla, Cal.; three other sons, Rev. George Pemberton of Cleburne; Cecil A. Pemberton of Fort Worth and J. T. Pemberton III of La Jolla; a brother, I. M. Pemberton, of Fort Worth; nine grandchildren and seven great-grandchildren.

Funeral arrangements are pending.

STARTS TONIGHT
Revival at the First
Church of the Nazarene

1201 E. Allen
Rev. Ward B. Chandler,
Evangelist

Service 7:30 p. m.

Everyone Welcome
Luther Cantwell, pastor

cial plans for the money. "I just wanted to spend it," he declared.

"But wouldn't your mother have been curious about that package—you know women?" a reporter asked.

"Well, she'd have just been curious," Banning replied flatly.

Mother 'Broken Up.'

Banning said his mother was "pretty broken up" about his crime, but he gave no show of emotion as he spoke of her.

Banning telephoned home upon his arrival here Tuesday, then caught a cab to the residence. Detectives and FBI agents trailed the cab for several blocks and surrounded the youth when it pulled up at the address. Banning was unarmed and did not resist. However, Detective Mayer accidentally fired his pistol as he reached for the youth's arm. The bullet struck the ground.

Banning, a resident of Des Moines, said he never had been in trouble with police before. His mother moved here after she remarried, he said. Banning was honorably discharged from the Army paratroops after he enlisted under age, he said, adding he was given an honorable discharge from the Navy under the point system. He had been working in a Des Moines steel mill this fall.

The youth has logged 20 hours as a pilot under the GI bill training program. He said he wanted to enter college, but had completed only two years of high school.

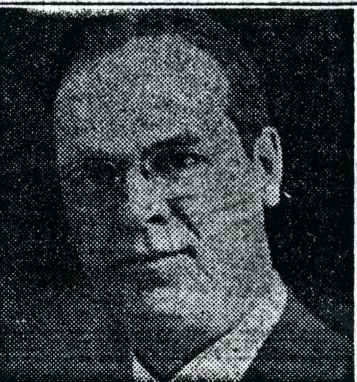
Car Victim in Bad Shape

The condition of Rosemary Pearce, 4, whose skull was fractured Tuesday when she was struck by a car on Highway 287 in front of her Kennedale home, Wednesday remained critical at St. Joseph's Hospital. She is the daughter of Mr. and Mrs. Jess Pearce.

Nose Red and Raw

due to a cold?
To relieve smarting irritation and help nature heal, smooth on a bit of soft, soothing, gently-medicated

RESINOL OINTMENT



Tuesday was a chilly 33, was hardest hit. At Provo, the county commissioners and chamber of commerce appealed to John L. Lewis and the United Mine Workers to provide coal for the Ironton coking ovens which provide heat for the county's 60,000 citizens.

"The health and even the lives of some people will be jeopardized if heat in the homes is shut off as scheduled this week," the appeal said.

Mexico Plane Trips Cut Out

American Airlines Wednesday announced suspension of its Fort Worth-Mexico City flights, effective Sunday.

Samuel C. Pace, American's southern regional director of public relations, said the airlines' policy of replacing DC-3 planes with the larger capacity DC-4s on long flights was responsible for the suspension of the Fort Worth-Mexico City service. The runways at Municipal Airport are too short for the operation of a fully loaded DC-4.

Service for this area to and from Mexico City after Saturday will be through Dallas on DC-4 flights originating at Chicago and New York. The Mexico City flight from New York is scheduled at Dallas at 6:25 a. m., and the Chicago plane makes a Dallas stop at 4:10 a. m. The return trip of the New York-bound plane reaches Dallas at 9:50 p. m., with the Chicago plane landing at Dallas at 6:35 p. m. Port of entry on the flights is San Antonio.

Naval Reserve to Meet

The Naval Reserve will meet at 7:30 p. m. Wednesday at the Lone Star Gas Company auditorium with Lt. Cmdr. R. W. Wheeler Jr., USNR, in charge.

(c) between Oklahoma City and Dallas, via Shawnee, Wewoka, Ada and Ardmore, Okla., Gainesville and Fort Worth, Durant, McAlester, Wewoka and Okmulgee, Okla.; (e) between Dallas and Texarkana, via Greenville and Paris.

To Mid-Continent Airlines, the board issued an additional temporary 3-year certificate for service between Tulsa and Houston, via Muskogee and McAlester, Okla., and Paris, Tyler and Longview. Longview will be served on an alternate basis with Tyler.

The board amended the certificate of Pioneer Airlines for Route 64 to include Midland-Odesa and Lamesa as intermediate points between San Angelo and Lubbock, and Plainview as an intermediate point between Lubbock and Amarillo. It further amended Pioneer's Route 64 to include service between Houston and Dallas, via Fort Worth, Mineral Wells, Ranger-Eastland-Cisco, Abilene, Sweetwater and Big Spring.

The board amended the certificate of American Airlines on Route 4 to include Midland-Odesa as an intermediate point between Big Spring and El Paso. American's application for an extension of Route 30 to serve Houston was denied.

The board amended the certificate of Chicago & Southern Airlines over Route 53 to include Beaumont-Port Arthur as an intermediate point between Shreveport and Houston.

The board extended the certificate of Pioneer Air Lines for three years. The carrier also was authorized to conduct shuttle service between any two adjacent points on its route.

Authority to conduct shuttle service also was granted to Central Airlines and Aviation Enterprises on their newly authorized routes.

BAYER
ASPIRIN
RELIEVES AN ORDINARY
HEADACHE
WITH AMAZING SPEED

If you have a headache that requires a prescription only **YOUR** doctor SHOULD WRITE THAT PRESCRIPTION

Willie the Penguin says:
IF A COLD COMES ON,
AND YOU START TO SNEEZE,
GET WISE TO KOOLS —
THEY'RE KOOL AS A BREEZE

Get that clean,
Kool taste in your mouth!

KOOL

FORT WORTH STAR-TELEGRAM

WEDNESDAY EVENING
NOVEMBER 27, 1946