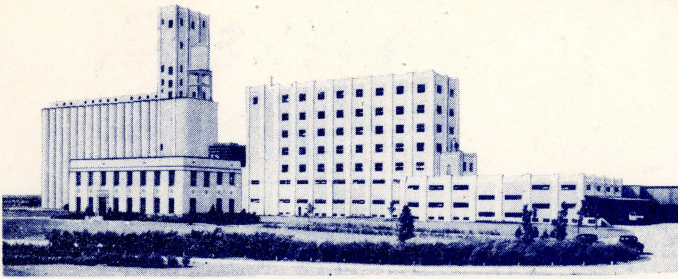


INVOICE

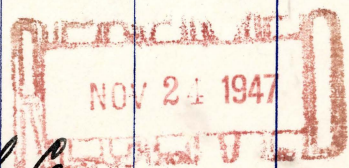


**BURRUS MILL AND ELEVATOR COMPANY**

Fort Worth, Texas

SOLD TO <b>AMON G. CARTER FOUNDATION</b> FT. WORTH STAR TELEGRAM ADDRESS <b>FT. WORTH, TEXAS</b>  BANK  SHIP TO <b>COMMODITY CREDIT CORP.</b> % <b>EUROPEAN FRIENDSHIP TRAIN</b> DESTINATION <b>PHILADELPHIA, PA.</b>  ROUTE <b>(GTW)</b>	DATE <b>11/21/47</b>  TERMS <b>NET 30 DAYS</b>	INVOICE NO. <b>B</b> <b>48142</b>  DRAFT NO.	ORDER NO. <b>MO 21536</b>  TYPED BY <b>gn</b> B/L <b>OPEN</b>
	CAR INITIAL AND NUMBER <b>KCS-17783</b>		

PACKAGES		BRAND	UNIT	PRICE	AMOUNT	TOTAL
NO.	SIZE					
600	100	OSNA CLEARS Packed in Osnaburg Bags  600 Cwt. on Cont. 10708	600	6.51	3906.00	



*Burrus Mill & Elev. Co.*  
*W. T. Garrett Jr.*

**NOTICE:** All Accounts and Invoices Payable at Fort Worth, Texas.  
 In case of loss or damage please return the attached loading report properly filled out.

# LOADING REPORT

SEALS

*F-11365-66*

ORDER No.

*91536*

CAR NUMBER

*Ke5-17783*

DESTINATION

*Wichita, Kan*

Time started

*10-AM*

Date

*11-21-57*

Time finished

*12 mid*

Date

RICK	BRAKE END				NON-BRAKE END			
	No.	Size	Brand	Checked by	No.	Size	Brand	Checked by
1	<i>42</i>	<i>100</i>	<i>Chans</i>	<i>RC</i>	<i>42</i>	<i>100</i>	<i>Chans</i>	<i>RC</i>
2	<i>42</i>	<i>100</i>	—	<i>RC</i>	<i>42</i>	<i>100</i>	—	<i>RC</i>
3	<i>42</i>	<i>100</i>	—	<i>RC</i>	<i>42</i>	<i>100</i>	—	<i>RC</i>
4	<i>42</i>	<i>100</i>	—	<i>RC</i>	<i>42</i>	<i>100</i>	—	<i>RC</i>
5	<i>42</i>	<i>100</i>	—	<i>RC</i>	<i>42</i>	<i>100</i>	—	<i>RC</i>
6	<i>42</i>	<i>100</i>	—	<i>RC</i>	<i>42</i>	<i>100</i>	—	<i>RC</i>
7								
8								
9								
10								

*RC* *5. Empty Bags*

DOORWAY				
No.	Size	Brand	Checked by	
1	<i>40</i>	<i>100</i>	<i>Chans</i>	<i>RC</i>
2	<i>16</i>	<i>100</i>	—	<i>RC</i>
3	<i>40</i>	<i>100</i>	—	<i>RC</i>
4				
5				

I certify that the above merchandise was loaded as listed above.

*JW*  
Foreman

SPECIAL INSTRUCTIONS:

---



---



---

**NOTICE**

**LOSS AND DAMAGE REPORT**

Date

If shortage or damage is found in this car, please list below in what rick it occurred.

I certify that the above shortage and /or damage is correct: