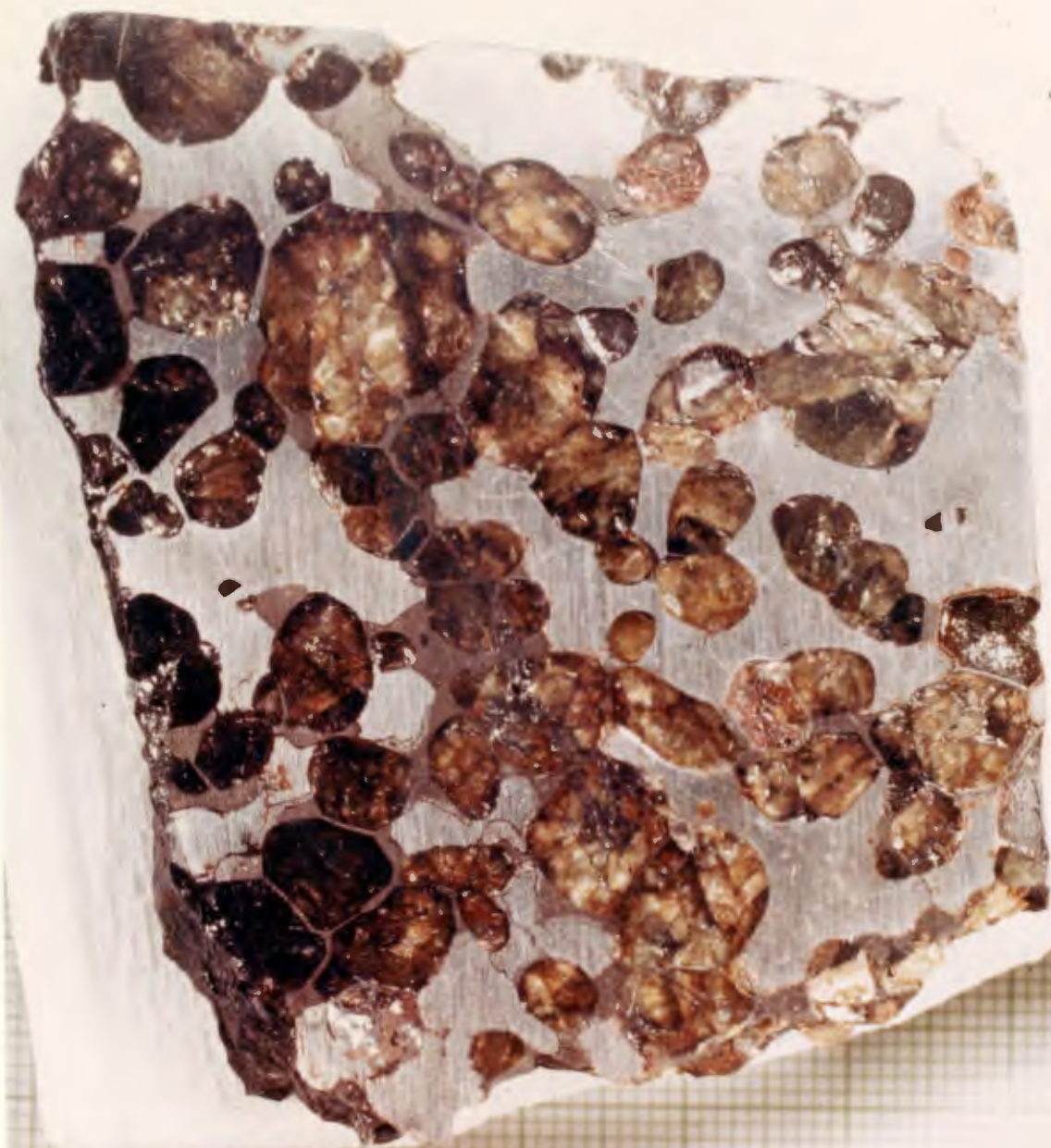


Figure 6. --Brenham pallasite. Closely packed, rounded grains of olivine, with interstices occupied by nickel-iron. A crystallization texture produced by crystallization of olivine at below 1750°C, prior to the solidification of nickel-iron at about 1525°C or below. Some specimens of Brenham show interstitial nickel-iron grading into massive, Widmanstätten figured metal. Some pallasites, such as Eagle Station (Mason, 1962a, p. 124) show angular and brecciated grains of olivine in a matrix of nickel-iron -- structure clearly developed after crystallization of the olivine and original solidification of the nickel-iron.



0 1 2 3 4 5

1/2 mm

**BRANCH of ASTROGEOLOGY  
U. S. GEOLOGICAL SURVEY**

PHOTO No. \_\_\_\_\_

DATE \_\_\_\_\_

FLAGSTAFF, ARIZONA