










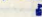
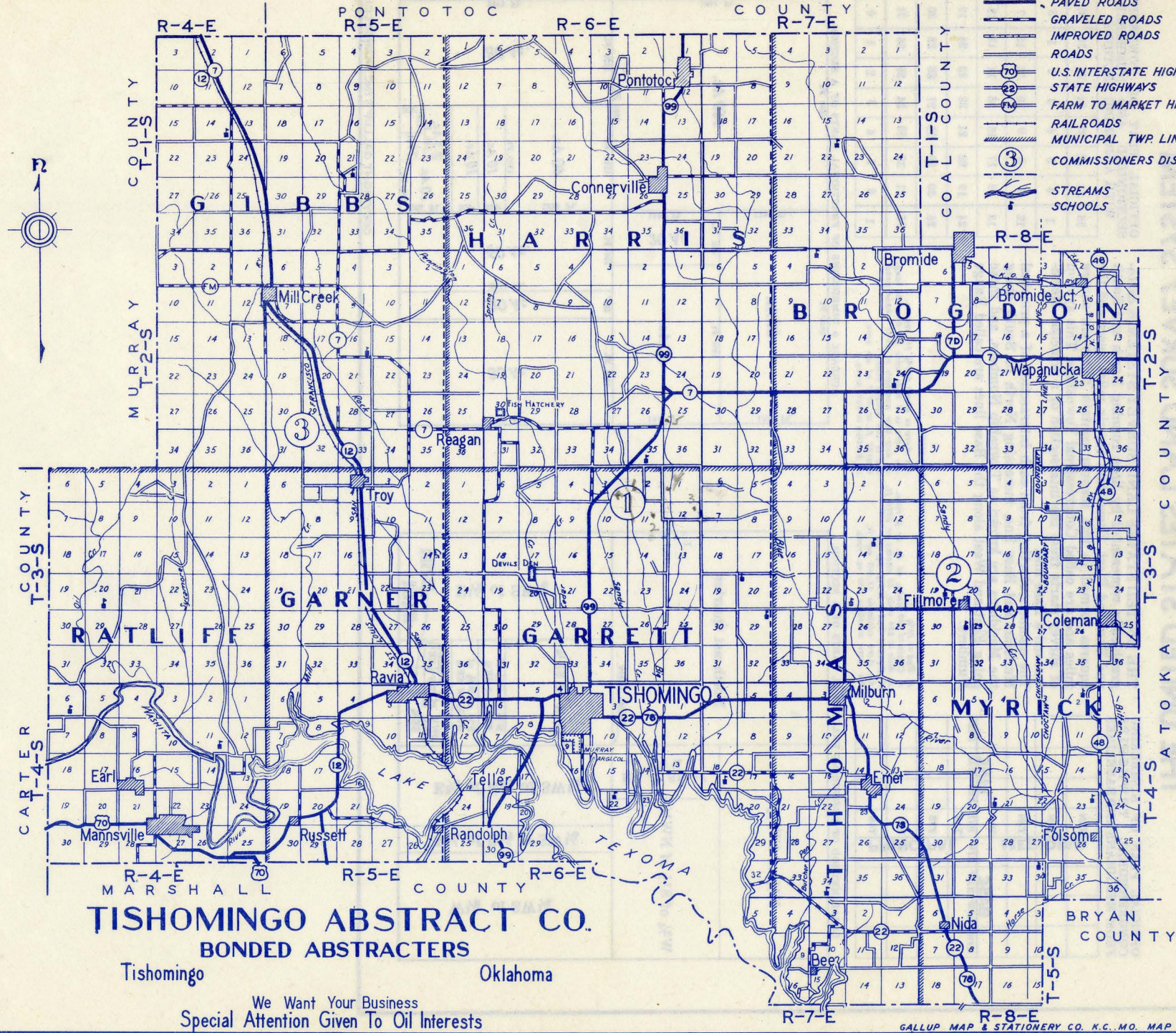


# JOHNSTON COUNTY, OKLAHOMA

## LEGEND

-  PAVED ROADS
-  GRAVELED ROADS
-  IMPROVED ROADS
-  ROADS
-  U.S. INTERSTATE HIGHWAYS
-  STATE HIGHWAYS
-  FARM TO MARKET HIGHWAYS
-  RAILROADS
-  MUNICIPAL TWP. LINES
-  COMMISSIONERS DISTRICTS
-  STREAMS
-  SCHOOLS



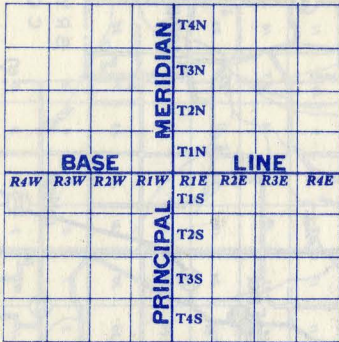
**TISHOMINGO ABSTRACT CO.**  
**BONDED ABSTRACTERS**

Tishomingo Oklahoma

We Want Your Business  
 Special Attention Given To Oil Interests

# THE UNITED STATES LAND SURVEY SYSTEM

OFFICIAL PLAN OF NUMBERING CONGRESSIONAL TOWNSHIPS FROM MERIDIANS AND BASELINES



THE UNITED STATES LAND SURVEY SYSTEM is cartographically represented by lines running North and South and East and West. These lines are six miles apart and the squares formed in this manner contain thirty-six square miles and are called Congressional Townships. This system of survey starts from the intersection of a principal Meridian and a Base line. The numbers starting from each intersection of a principal Meridian and Base line, increasing North or South along the Meridians are known as Township Numbers, and those going East and West along the Base lines are called Range Numbers.

### LAND MEASURE

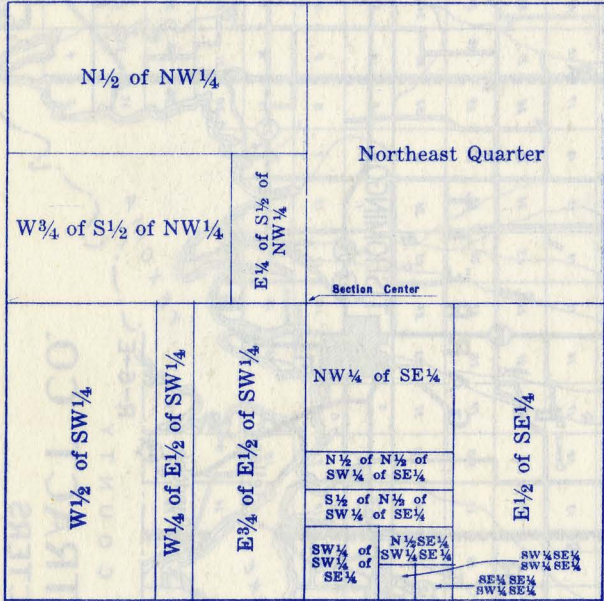
A Rod = 16 1/2 ft.  
 A Chain = 100 links, 66 ft. or 4 rods.  
 A Mile = 80 rods, 30 chains or 5280 ft.  
 A Square Rod = 272 1/4 sq. ft.  
 An Acre contains 160 sq. rods.  
 An Acre contains 43,560 sq. ft.

An Acre is about 208 1/2 ft. square.  
 An Acre is 8 rods wide by 20 rods long, or any two numbers of rods whose product is 160 square rods.  
 23 1/2 x 25 ft. = .0717 of an acre.  
 A Section = 640 acres.

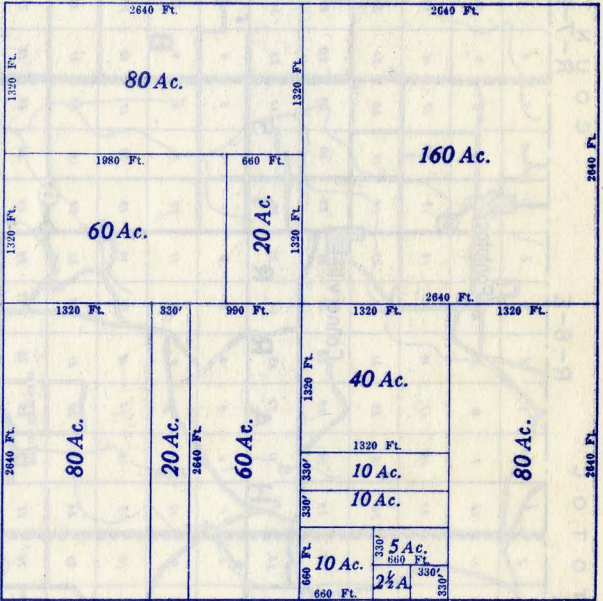
OFFICIAL PLAT OF TOWNSHIP SECTIONIZED AND NUMBERED, WITH ADJOINING SECTIONS.



LEGAL METHOD OF DESCRIBING FRACTIONAL PARTS OF A SECTION.



ACREAGE & DIMENSIONS OF FRACTIONAL PARTS OF A SECTION.



COPYRIGHT GALLUP'S INC., KANSAS CITY, MO.