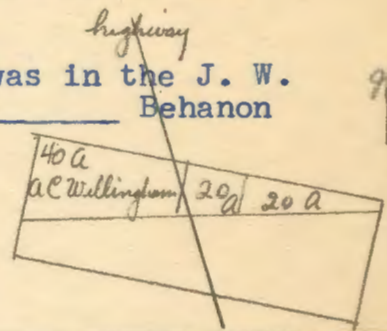


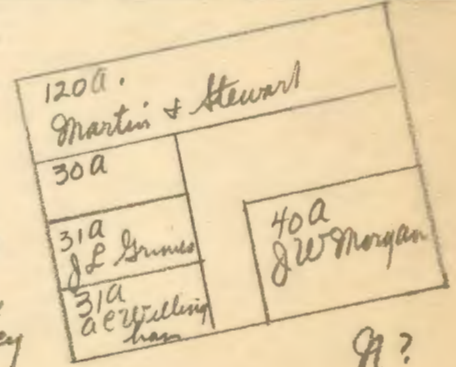
Interview with J. W. (Wallace) Morgan: They were bldg a sugar furnace, his (Wallace's) brother and his uncle; he heard a popping, a noise in the elements, such as he had never heard before. Thomas ("Bud") Worthy Morgan found the meteorite and dug it out of the ground. Uncle Jerome Davis was the other man with Bud. Wallace is the only one who described the noise as a popping. He further said the meteorite didn't go deep into the ground, but was just under the top of the ground, perhaps 3 or 4". He, Wallace, was within 30 steps, in the front yard. "We broke a little piece off. It was black all over on the outside." It was in the fall, about 3.30 in the afternoon, and we were going to fix up to make syrup. Prob. about Oct. or Nov. Mrs. Wallace Morgan then spoke up and said it was certainly on Nov. 12, about 2 or 3 p.m., and certainly before 1911; but "Laura knows the exadt year." It was before Bud died, and she said he died Sept. 4, 1908. She thought the meteorite fell about 1907, and both finally concludud it was the last year of the panic. Wallace compared the noise to that of the popping of guns, "only a little keener"; it "roared down thru the air." It was heard in the Magnolia Springs community about 10 away just a little N. of W. The noise seemed to Wallace to come out of the SW. There is an old man in the community who studies the stars; Jim McDonald.

Mileage: 33.9 at house, 34.45 at main (new) highway; 46.2 at garage SW corner of square at Jasperville. Mr. Walker at the Jasper Newsboy printed an article at my request.

I thought at first that the land in question was in the J. W. Davis Survey, shown on sketch; deeds were from Behanon to Willingham (perhaps A. C. or Wilmer) and one 20 A. tract in this set was deeded by Grimes et ux to Willingham in 53/608. The western 40 A. belonged d at one time to A. C. Willingham, the next 20 E. to Manda (Mrs. G. C.) Willingham. The road runs 25° E. of S., see Vol. 22 p. 17, 1912. This was probably the old Jasper-Kirbyville highway.



Later I found that the land in question was surey the Calvin Donahoe 320 A. Survey; see deeds in 32/350 from A. C. Willingham to J. L. Grimes and in 55/359 from J. W. Behannon to A.C. Willingham, Sept. 6, 1924. My orig notes contained two conflicting detailed sketches, also here shown, but the meteorite fell on the tract in the SW corner of the survey.



91?

