

Called to serve





Called to serve

Who directs TCU?

ONLY ABOUT three out of one thousand adults in our nation meet the high qualifications required of those called to serve as trustees of our colleges and universities. As participating members of the university community, they are called to be questioners, analysts, probers, policy makers, fund raisers, spokesmen, counselors. They are called to listen to the sounds of change in our time — and to guide the destiny of the institutions they serve with imagination and wisdom.

As it begins its second century, Texas Christian University is fortunate to have men and women on its Boards of Trustees who

equal these high expectations. With earnest dedication they have given of their time and resources to insure that TCU continues on the path toward becoming a better university in the strongest of academic traditions, an institution of learning of the highest level. They are men and women who share in TCU's commitment to continue a Christian emphasis on the worth of each person as an individual, to provide an atmosphere where the dignity of man as a creature of God is of utmost importance.

A noted educator, Chester M. Alter of the Academy for Educational Development

Inc., has said, "The term 'trustee' implies the duty to preserve the past, and certainly this is an important function of college trustees. They must preserve the endowment, the traditions, and the reputation of their institution. But today, they must do more than simply preserve. They must plan for the future, and it is their role to encourage and support the president and other responsible officers in their efforts to develop sound planning procedures."

These are the men and women who are members of TCU's Boards of Trustees . . . who preserve its past and plan its future . . . who are *called to serve*.

What do University Trustees do?

1. They set the policy of the University.

While the chancellor and his administrative associates recommend to the trustees, in the last analysis it is the trustees who set the policy.

2. They direct the future planning and destiny of the University.

They supplement the planning of the Executive Committee by critical review in executive sessions and offer their personal critique and counsel in conferences with the officers of the University.

3. They speak for TCU.

They are sponsors of the University as it goes to the public seeking students and financial support, and as it seeks to increase its area of service to the nation.

4. They furnish much of the resources that sustain the University.

Every trustee of TCU or the firm he represents, and in many cases both, have made a financial commitment to the University.

Some of the trustees have written the University into their wills.

The largest single bequest ever left to the University was left by the late Milton Daniel, a trustee and, for several years before his death, chairman of the board.

The Trustees of Texas Christian University

BY CHARTER, the Board of Trustees of TCU consists of not less than twenty-four, nor more than fifty members with a simple majority to be members of the Christian Church (Disciples of Christ). Confirmation of the election of new trustees is made by the Texas Association of Christian Churches meeting in annual assembly.

Honorary board members are those persons who have rendered exceptional service or aid to the University. Most have served terms as regular members of the TCU Board of Trustees.

TCU proudly
presents its
Trustees,

called to serve
and to guide
the University



James M. Moudy

CHANCELLOR

Chancellor, TCU, since 1965, and Professor of Religion; other TCU positions: executive vice chancellor, 1964-65, vice chancellor for academic affairs, 1962-64, dean of Graduate School, 1957-62; dean of instruction, Atlantic Christian College, 1953-57; ordained minister of Christian Church (Disciples of Christ); moderator of General Assembly, Christian Church, 1969-71; president, Independent Colleges & Universities of Texas; past president, Texas Council of Church-Related Colleges; past chairman, Board of Higher Education, Disciples of Christ; director, National Council of Independent Colleges and Universities, Texas Library & Historical Commission, Jarvis Christian College, University State Bank, Pioneer American Insurance Co., Texas Electric Service Co.; member, Philosophical Society of Texas, Newcomen Society in North America, Phi Beta Kappa, Exchange Club; member University Christian Church; B.A., TCU, 1943; B.D., Brite Divinity School, 1949; Ph.D., Duke University, 1953; LL.D., Atlantic Christian College, 1964; L.H.D., Bethany College, 1970, LL.D., Eureka College, 1972.



Theodore P. Beasley

Since 1954 / Dallas

CHAIRMAN OF THE BOARD
Insurance. Chairman of Board and Chief Executive Officer, Republic National Life Insurance Co.; member, Board of Directors, Mercantile National Bank, Southwest Title Insurance Co., Oak Cliff Savings and Loan Assn., National City Christian Church Corp., Washington, D.C.; honorary lifetime member, Board of Trustees, George Williams College, Downers Grove, Ill.; active in insurance associations; member, Dallas Citizens Council, Greater Dallas Council of Churches, Newcomen Society in North America; recipient of Lay Churchman of the Year Award of Religious Heritage of America, Inc., 1952; received citation, National Conference of Christians and Jews, 1965; member of Dallas and National Board of National Conference of Christians and Jews; LL.D., TCU, 1968.



William C. Conner

Since 1962 / Fort Worth

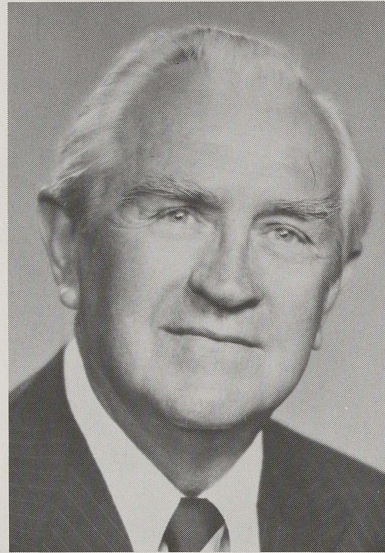
VICE CHAIRMAN OF THE BOARD
Pharmaceuticals, Product Engineering. Chairman of Board and Chief Executive Officer, Alcon Laboratories, Inc.; trustee, Conrad Berens Eye Foundation, Inc., Research to Prevent Blindness, Inc., United Fund of Tarrant County; president, Visual Research Foundation; director, Pharmaceutical Manufacturers Assn., Fort Worth Chamber of Commerce, NTL Institute for Applied Behavioral Science, Fort Worth National Bank, TCU Research Foundation; executive committee, Pan American Association of Ophthalmology; received first annual Ike Harrison Award presented by TCU Management Association, 1971; named Fort Worth's Distinguished Salesman of the Year, 1972; past board chairman, University Christian Church; alumnus Danforth College of Pharmacy, Harvard Business School.



R. Denny Alexander

Since 1972 / Fort Worth

Investments. General partner, RDA Investments (cattle, oil and gas, land); director, Alcon Laboratories, Inc.; member, Board of Deacons, University Christian Church; B.A., Stanford University, 1968; M.B.A., Stanford University Graduate School of Business, 1970.



Carlos C. Ashley

Since 1949 / Llano

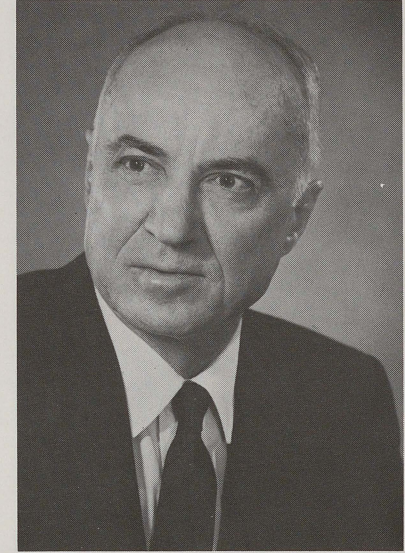
Attorney, Ranching, Land Developing. District Attorney, 33rd Judicial District of Texas, 1935-44 and 1961-68; president, District and County Attorneys Association of Texas, 1942, Hill County Bar Association, 1958; chairman, Committee on History and Traditions of the Bar of Texas, 1972-73; Poet Laureate of Texas, 1949-50; State Senator, 1949-58; chairman, State Board of Control of Texas, 1946-47; first Assistant Attorney General of Texas, 1944-46; TCU Baseball Letterman, 1923; member, First Christian Church; B.A., TCU, 1926; LL.B., Cumberland University, 1930.



Earle B. Barnes

Since 1959 / Midland, Mich.

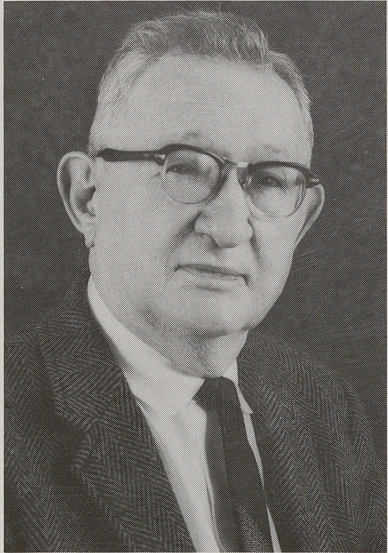
Chemicals. President, Dow Chemical, U.S.A.; member, American Chemical Society, American Institute of Chemical Engineers, Alpha Chi scholarship society; Outstanding Citizen, Brazosport Chamber of Commerce, 1964; member, Board of Directors, TCU Research Foundation; member, Presbyterian Church; B.A., TCU, 1938; M.A., University of Nebraska, 1940; D.S., TCU, 1962.



Lorin A. Boswell

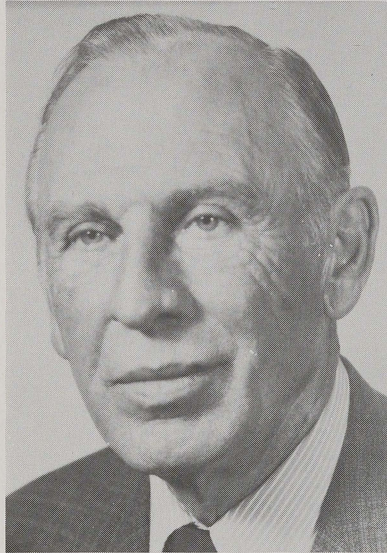
Since 1955 / Fort Worth

Investments. Honorary Board Chairman, Boswell Dairies; chairman emeritus, Van Cliburn International Quadrennial Piano Competition Foundation in 1966 and chairman in 1962; received citation from National Conference of Christians and Jews, 1955; director, University State Bank; member, Alpha Chi scholarship society, Newcomen Society in North America, Phi Kappa Sigma, Sons of American Revolution, Exchange Club; member, Board of Trustees, University Christian Church; chairman of TCU Board of Trustees, 1958-69; received TCU Distinguished Alumnus Award, 1965, and Valuable Alumnus Award, 1956; *Who's Who in America*; B.A., TCU, 1937; LL.D., TCU, 1967.



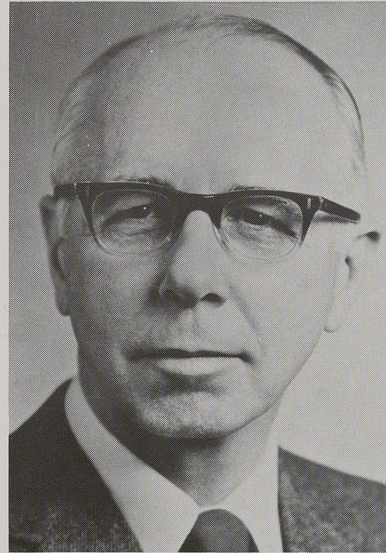
Solomon Brachman

Since 1950 / Fort Worth
Oil, Insurance. President, Producers Supply and Tool Co.; chairman of Board, Pioneer American Insurance Co.; vice president and treasurer, Northwest Oil Co.; served on boards of Union of American Hebrew Congregation, Council of Jewish Federations and Welfare Funds, United Fund, Chamber of Commerce, Fort Worth Progress; received citation from National Conference of Christians and Jews, 1953; received TCU Royal Purple Award; member, Beth El and Ahavath Sholom congregations; member, Phi Beta Kappa; B.A., Marietta College, 1918; *Literarum Humaniorum*, Marietta College, 1969; LL.D., TCU, 1968; honorary member TCU Alumni Association.



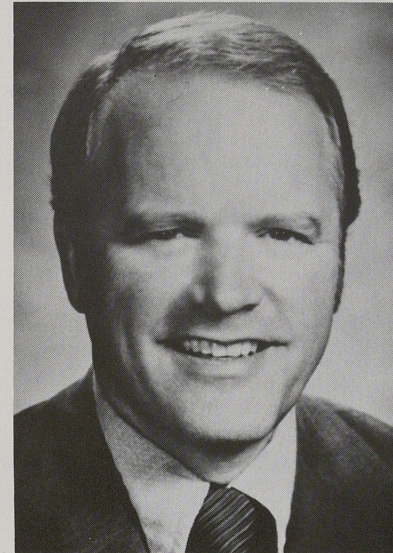
Andrew A. (Jack) Bradford

Since 1951 / Midland
Investments. Owner, Bradford Oil Co., Midland, Investment and Banking; member, Christian Church, Midland Chamber of Commerce, Midland Development Board, Board of Governors, Midland Memorial Hospital Foundation; alumnus, TCU.



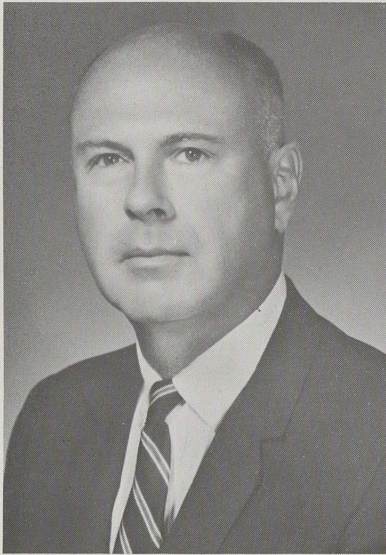
Sterling W. Brown

Since 1966 / New York
Ministry. President, National Conference of Christians and Jews; ordained minister, Christian Church (Disciples of Christ); chairman, department of religion, Drake University, 1940-43; named general director of NCCJ in 1949 and president in 1965; served in West Germany, 1947-49, as adviser on intergroup relations to Gen. Lucius D. Clay; chairman, Religious Affairs Panel, 1949-55, advising U.S. State Department on religious affairs in occupied countries; author; received Four Chaplains Award in Philadelphia, 1966; member, Park Ave. Christian Church; B.A., TCU, 1930; B.D., Brite Divinity School, 1932; Ph.D., University of Chicago, 1934; LL.D., Eureka College, 1965, and TCU, 1966.



Robert A. Buschman

Since 1972 / San Antonio
EX OFFICIO
Oil. President and Director, Field International Drilling Co.; president, Mission Marine Co.; director, Family Services Assn. of San Antonio, Inc.; member, Texas Independent Producers and Royalty Owners Assn., American Petroleum Institute, Independent Petroleum Assn. of America; past national president, American Assn. of Oil Well Drilling Contractors; member and elder, Central Christian Church; 1972 president, TCU Alumni Association, after serving as director, 1966-69, vice president, 1970, and president elect, 1971; TCU Football Letterman, 1944; B.A., TCU, 1948.



Amon G. Carter Jr.

Since 1966 / Fort Worth

Publisher. President and Publisher, Fort Worth Star-Telegram; director, American Airlines; chairman, Executive Committee, Trinity Improvement Assn.; trustee, National Cowboy Hall of Fame; chairman of board, Southwestern Exposition and Fat Stock Show, Fort Worth Zoological Association; director, West Texas Chamber of Commerce; president, Fort Worth YMCA, 1958-64; received B'nai B'rith Civic Achievement Award, 1959; Outstanding Salesman of Year, 1961; member, First United Methodist Church, Fort Worth Sales and Marketing Executives Club, Kappa Sigma; B.B.A., University of Texas, 1946; LL.D., Texas Wesleyan College, 1966.



Lester Clark

Since 1956 / Breckenridge

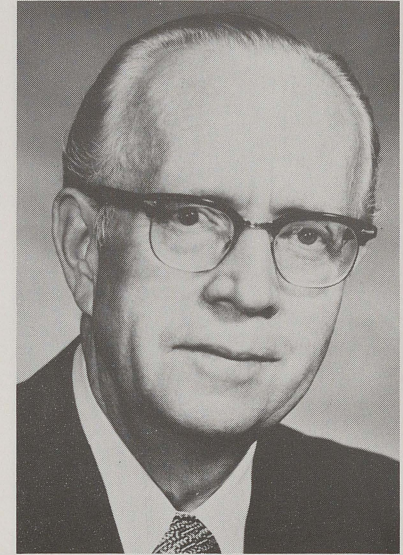
Oil, Ranching. Chairman of Board, Petroleum Corporation of Texas; vice chairman, Texas Water Quality Board; director, Texas Good Roads Assn.; member, Texas House of Representatives, 1938-43; past director, Independent Petroleum Assn. of America, Texas Independent Producers and Royalty Owners Assn.; past president, Chamber of Commerce, Jaycees; member, Episcopal Church, Board of Directors, Breckenridge YMCA, Comanche Trail Council Boy Scouts of America, Phi Gamma Mu, Kappa Alpha; received Breckenridge Chamber of Commerce Outstanding Citizen Award, 1961, and Distinguished Citizen Award, 1965, Governor's Texas Citizen Aide Award, 1967; B.A., Southwestern University, 1935.



Drew Ellis

Since 1957 / Perryton

Farming, Ranching, Cattle-Feeding. President and Chairman of Board, First National Bank, Perryton; director and vice president, Interstate Savings & Loan; director, High Plains Research Foundation, Tri-State Fair, Amarillo; active in local and national political affairs; mayor, Perryton, 11 years; past president, Perryton Jaycees; Citizen of Year, Perryton Chamber of Commerce, 1960; trustee, First Christian Church; former high school coach; TCU Football Letterman, 1934-36; two years pro-football, Philadelphia Eagles; alumnus, TCU.



Judge Fred Erisman

Since 1956 / Longview

Law. Practicing trial lawyer, civil and criminal cases; judge, 124th Judicial District Court, 1950-55; past chairman, Judicial Section State Bar of Texas; past president, District and County Attorneys Association of Texas, Gregg County Bar Association, Texas Trial Lawyers Association; member, International Academy of Trial Lawyers, Bar of Supreme Court of U.S. and all subordinate Appellate and District Courts and courts of special jurisdiction; member, Board of Visitors, M.D. Anderson Hospital and Tumor Institute; member, State Bar of Texas, American Bar Association, American Judicature Society, Phi Delta Phi; past chairman, United Fund, Red Cross, YMCA; elder and past chairman of board, First Christian Church; B.A., TCU, 1929; alumnus, Brown University; LL.D., TCU, 1971.



Bess N. Fish

Since 1972 / Houston

Ranching. Owner, Village Creek Ranch, Green Valley Farms; horseracing enthusiast; financial supporter, TCU Horned Frog Band; member, Christian Church (Disciples of Christ); alumna, University of Arkansas.



Beeman S. Fisher

Since 1962 / Fort Worth

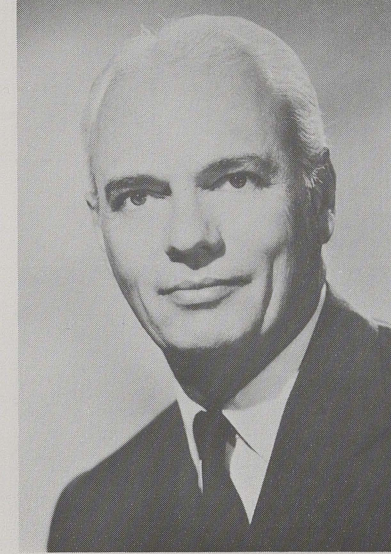
Business Consultant. Retired President and Chairman of Board, Texas Electric Service Co.; chairman, Texas Research League, Texas Water Conservation Assn.; vice chairman, The Association for Graduate Education and Research-North Texas Area (TAGER); vice president, Longhorn Council, Boy Scouts of America; director, TCU Research Foundation, Trinity Improvement Assn., Big Brothers of Tarrant County, Inc., Fort Worth Art Assn., Fort Worth Chamber of Commerce; founding chairman, TCU New Century Campaign, TCU Research Foundation; received Top West Texan Award, 1965, Fort Worth's Outstanding Citizen in 1970, Golden Deeds Award of Fort Worth Exchange Club, 1971; member, University Christian Church, Newcomen Society in North America; named Honorary Alumnus, TCU, 1967.



Bayard H. Friedman

Since 1971 / Fort Worth

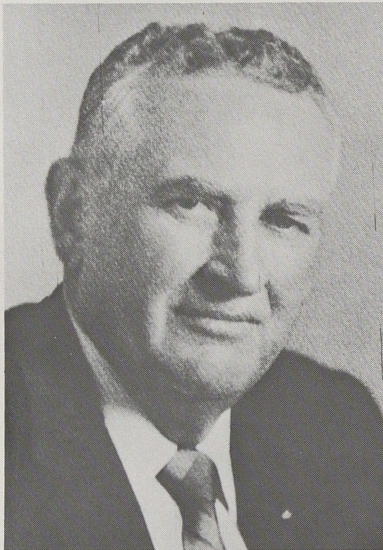
Banking. President, Fort Worth National Bank; former mayor of Fort Worth; member of American Bar Association, State Bar of Texas, Fort Worth-Tarrant County Bar Association, Exchange Club; named Fort Worth's Salesman of the Year, 1965; co-recipient of Exchange Club Golden Deeds Award, 1965; TCU Royal Purple Award, 1967; Distinguished Citizen's Award of the National Municipal League, 1968; member Beth-El Congregation; alumnus, TCU; LL.B. University of Texas, 1950; Harvard Business School 63rd Advanced Management Program, 1972.



William M. Fuller

Since 1969 / Fort Worth

Oil, Ranching. Independent oil operator and rancher; director, General Telephone & Electronics Corp., N.Y., The Fort Worth National Corp., Exchange Bank & Trust Co., Dallas, Snyder National Bank, Lubbock Cotton Oil Co.; member, Mid-Continent Oil & Gas Assn., Texas Independent Producers & Royalty Owners Assn., Methodist Church; alumnus, University of Texas, University of Pennsylvania, TCU.



Judge A. D. Green

Since 1960 / Vernon

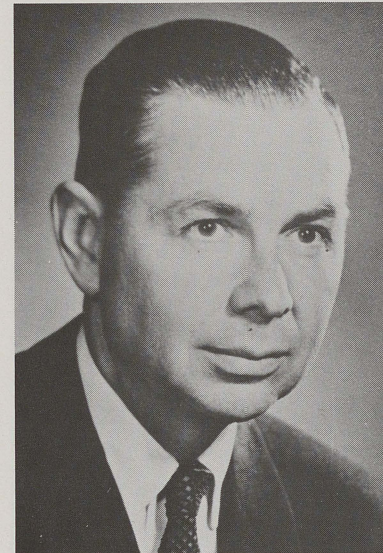
Farming, Ranching, Oil. County Judge, Wilbarger County, 1949-62; director, Boys Club of America, Vernon; member, Rotary; member, Central Christian Church; TCU Football Letterman, 1920-23; active in civic affairs; A.B. degree, TCU, 1923.



Cecil H. Green

Since 1969 / Dallas

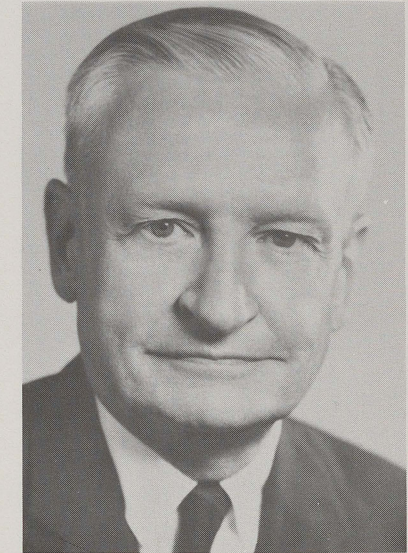
Engineering. Director, Texas Instruments Incorporated; member, Society of Exploration Geophysics, American Assn. of Petroleum Geologists, American Geophysical Union, Dallas Geophysical and Geological Societies; honorary life memberships, MIT Corporation, Friends of Research — Scripps Clinic and Research Foundation, La Jolla; honorary degrees: Doctor of Engineering, Colorado School of Mines, 1953; D.S., University of Sydney, 1961; D.S., University of Tulsa, 1961; D.S., University of British Columbia, 1964; LL.D., Austin College, 1966; D.S., SMU, 1967; Honorary Alumnus, SMU, 1962; member of Episcopal Church; alumnus, University of British Columbia, B.S. and M.S. degrees, Massachusetts Institute of Technology.



John M. Grimland Jr.

Since 1972 / Midland

Accountant. Managing partner, Main Lafrentz & Co.; member, Texas Society of CPA's, American Institute of Certified Public Accountants; president Optimist International, 1962-63, Midland Symphony & Chorus Association, Inc., 1963-65; past president, TCU Alumni Association, Permian Basin Estate Council, Midland United Fund, Midland Chamber of Commerce; member, First United Methodist Church; B.S., TCU, 1939.



Howard C. Harder

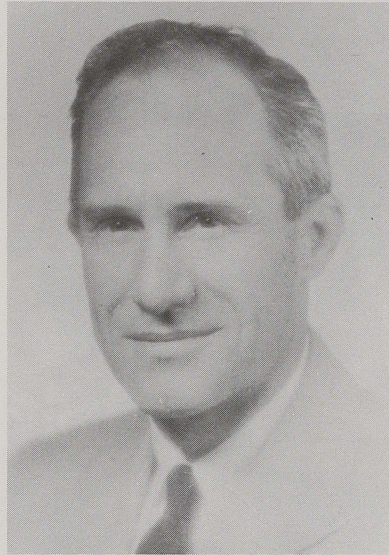
Since 1972 / Englewood Cliffs, N. J.

Manufacturing. Chairman and Chief Executive Officer, CPC International, Inc.; director, Associated Dry Goods Corp., New York, New Jersey State Chamber of Commerce, Chemical New York Assn., Peoples Trust of New Jersey, Western Electric; trustee, National 4-H Club Foundation, Nutrition Foundation; vice chairman of Sub-Council on Complaints and Remedies, National Business Council for Consumer Affairs; vice chairman of Food Industry Sub-Council, National Industrial Pollution Control Council; chairman, TCU Parents Fund, 1972-73; alumnus, University of Texas, Columbia University, Harvard Business School.



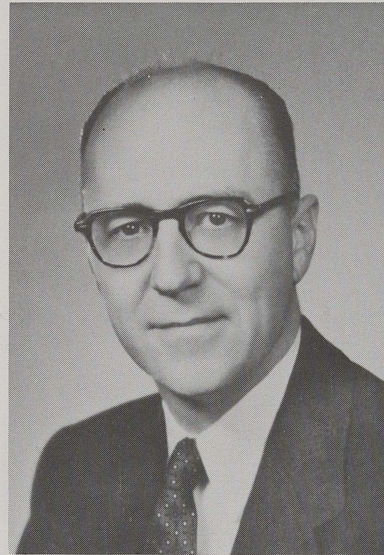
W. Oliver Harrison

Since 1954 / Corpus Christi
Ministry. Senior Minister, First Christian Church, Corpus Christi; vice chairman, Board of Trustees, Brite Divinity School; member, City Ministerial Alliance, Board of Trustees, Pension Fund of Christian Church; member of board, Corpus Christi Association of Congregations; past president, Texas Association of Christian Churches, Corpus Christi; A.B., TCU, 1932; B.D., Brite Divinity School, 1935; M.A., University of Chicago, 1937; alumnus, Union Theological Seminary, Pacific School of Religion; honorary D.D., TCU, 1948.



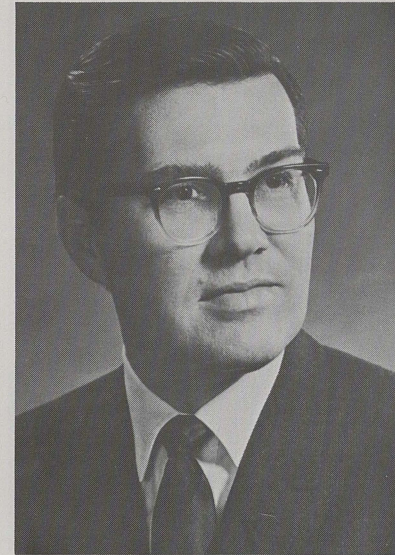
Harold D. Herndon

Since 1956 / San Antonio
Independent Oil Operator, Geologist. Owner, Harold D. Herndon Co.; past chairman, Board of Directors, San Antonio Branch, Federal Reserve Bank of Dallas; past member, Board of Trustees, San Antonio Transit System; member, Board of Trustees, Trinity University; member, American Assn. of Petroleum Geologists; past president, Alamo Area Council, Boy Scouts of America and member, Region IX Executive Committee; past chairman, Good Government League; received Silver Beaver Award, 1956, Silver Antelope Award, 1963; member, Pi Kappa Alpha; Minister of Music, Central Christian Church; B.S., University of Kansas, 1925.



Marion L. Hicks

Since 1961 / Fort Worth
Law, Aerospace. General Counsel, General Dynamics / Fort Worth; member, Board of Directors, TCU Research Foundation; past president, Fort Worth Jr. Bar Association, Fort Worth Jaycees, Tarrant County United Fund Campaign, Fort Worth Arts Council and Opera Assn.; vice president, Fort Worth Chamber of Commerce; named Fort Worth's Outstanding Young Man of Year, 1941; received Distinguished Service Award, Society of American Value Engineers, 1966; member, First Church of Christ Scientist, Exchange Club; received Distinguished Alumnus Award, TCU, 1958; TCU Tennis Letterman, 1932-33; A.B., TCU, 1933; LL.B., Harvard Law School, 1937.



Dee J. Kelly

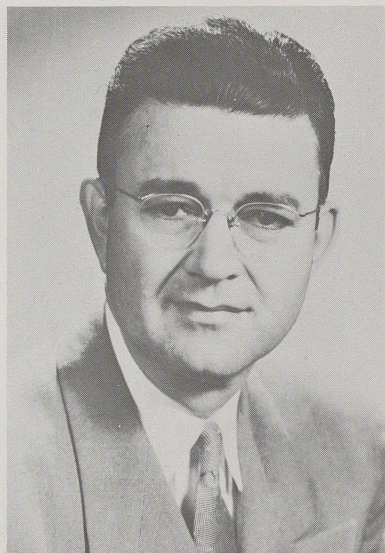
Since 1971 / Fort Worth
Law. Practicing lawyer; chairman, Board of Directors, Texas Turnpike Authority; chairman of the board, Bank of North Texas, Hurst; member, Board of Regents, State Senior College System, Legal Committee of Interstate Oil Compact Commission, American, Texas and Fort Worth-Tarrant County Bar Associations; director, Fort Worth Chamber of Commerce; trustee, Sam Rayburn Library and Foundation; member, University Christian Church; B.A., TCU, 1950, LL.B., George Washington University, 1954.



Judge Jack M. Langdon

Since 1962 / Fort Worth

Law. Associate Justice, Court of Civil Appeals, 2nd Supreme Judicial District; Presiding Judge, 8th Administrative Judicial District, 1957-62; chairman, Judicial Section of State Bar of Texas 1968; member, American Bar Association, American Judicature Society, State Bar Association of Texas, Fort Worth-Tarrant County Bar Association; past governor, Texas-Oklahoma District, Kiwanis; past president, TCU Lettermen's Association, TCU Alumni Association; member, Baptist Church, Society of Former Special Agents of FBI, Delta Tau Delta; TCU Football Letterman, 1931-33; B.S., TCU, 1935; LL.B., University of Texas, 1939.



Sidney Latham

Since 1947 / Douglassville

Oil, Cattle, Law. Retired Attorney; member, Texas Legislature, 1933-36; Secretary of State, Texas, 1943-45; Texas Representative on Interstate Oil Compact Commission, 1946-47; member, Board of Directors, Cotton Bowl Athletic Association since 1962; past president, Dallas Public Library Board of Trustees, TCU Alumni Association; member, Dallas Bar Association, State Bar of Texas; received Valuable Alumnus Award, TCU, 1958; active in civic and political affairs; former Chairman of Board, East Dallas Christian Church; B.A., TCU, 1929.



F. Lee Lawrence

Since 1972 / Tyler

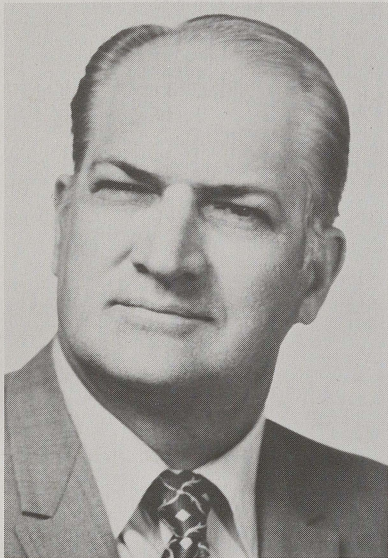
Law. Partner, Lawrence & Lawrence, Attorneys at Law; member, Smith County Bar Association, State Bar of Texas, Phi Alpha Delta law fraternity; received Award for Meritorious Service in Historic Preservation by the State of Texas, 1963; member, Christian Church; alumnus, Tyler Junior College, TCU; LL.B., School of Law, Southern Methodist University.



Paul Warren Mason

Since 1972 / Fort Worth

Banking. Chairman of the Board and Chief Executive Officer, The First National Bank of Fort Worth; member, State Bar of Texas, Fort Worth-Tarrant County Bar Association; member, St. Andrew's Episcopal Church; B.A., University of Kansas, 1947; LL.B. with honor, University of Texas, 1949.



Frank J. Medanich

Since 1972 / Dallas

Investments. Vice president, First Southwest Co., Investment Bankers; trustee and past chairman of the board, Juliette Fowler Homes; member, Texas Reconciliation Committee, Municipal Advisory Council of Texas; trustee and past chairman of board, Casa View Christian Church; TCU Football Letterman, 1941; B.S., TCU, 1944.



Jo Ann Moore

Since 1972 / Midland

Homemaker. President, Church Women United; president, Christian Women's Fellowship, First Christian Church; leader and member of the board, Girl Scouts of America; B.A., TCU, 1938.



M. J. Neeley

Since 1947 / Fort Worth

Investments. President, M. J. Neeley & Co., Inc.; chairman of board, Fort Worth Savings & Loan; director, University State Bank, Fort Worth Steel & Machinery; founding president, Truck-Trailer Manufacturing Assn.; board member, YMCA, Texas Boys Choir, Tarrant County United Fund; member, Newcomen Society in North America, Exchange Club, Delta Sigma Pi, Beta Gamma Sigma; received National Conference of Christians and Jews Brotherhood Award, 1965, B'nai B'rith Civic Achievement Award, 1967, Rotary Bill Todd Award, 1967; Exchange Club Golden Deeds Award, 1970; Texas A&M Distinguished Alumnus Award, 1970; past board chairman, University Christian Church; chairman, TCU Board of Trustees, 1969-1972; B.S., Texas A&M University, 1922; LL.D. TCU, 1967.



J. C. Pace Jr.

Since 1968 / Fort Worth

Investments. President, J. C. Pace Investments; Vice President, J. C. Pace & Company; Director, Kimbell Art Foundation; board member, Future Fort Worth, Fort Worth Stock Show, Fort Worth National Bank, Dallas-Fort Worth Regional Airport; President, Fort Worth Chamber of Commerce, YMCA, Boy Scouts; past president, Tarrant County Crime Commission; past president and chairman, Tarrant County United Fund; recipient, Silver Beaver Award, Boy Scouts; member, First United Methodist church, Exchange Club; alumnus, University of Texas.

TCU Board of Trustees



W. S. Parish Jr.

Since 1971 / Fort Worth

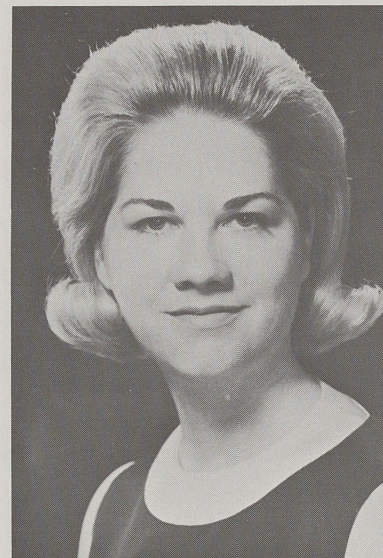
Ministry. Retired. Formerly executive director, Louisiana Association of Christian Churches; director, Louisiana Council of Churches, Board of Unified Promotion, Board of Christian Church, Home and State Missions Planning Council, Council of Agencies of Christian Churches, Curriculum and Program Council — Department of Christian Education, Christian Educators Fellowship, Arthritis Foundation of Louisiana; pastorates: Denton and El Paso, Texas, Elk City and Lawton, Oklahoma; named Minister of the Year by Oklahoma Fellowship of Disciples Directors, 1958; member, Richland Hills Christian Church; alumnus, SMU; B.A., TCU, 1942; B.D., Brite Divinity School, 1947, D.D., Phillips University, 1960.



Michael Saenz

Since 1972 / Laredo

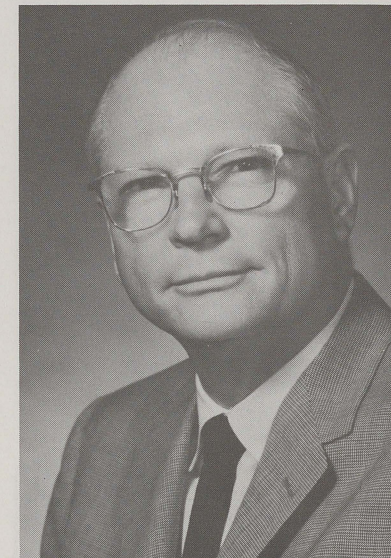
Higher education. Academic Dean, Laredo Junior College; member, Texas Junior College Teachers Assn., Texas Assn. of Junior College Instructional Administrators; member, executive, finance and program committees, World Convention of Churches of Christ; director, Civic Ballet Company of Laredo; member of executive board, Gulf Coast Council, Boy Scouts of America; listed in *Who's Who in the South and Southwest*, *Who's Who in the Mid-West*; member, Commission on Outreach Appeals, Christian Church in Texas; World Outreach Chairman, district nine, Christian Church in Texas; elder and director, First Christian Church; B.S., with distinction, M.Ed., TCU; Ph.D., University of Pennsylvania.



Mrs. Bob Schieffer

Since 1971 / Washington, D.C.

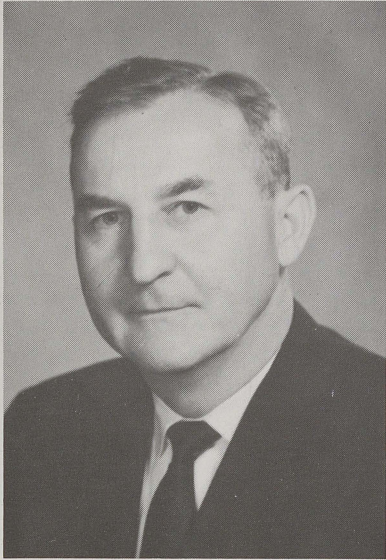
Homemaker. Member, Junior League of Washington, D.C., Kappa Kappa Gamma; past State Democratic Committee Woman from Tarrant County; past member of the Texas Good Neighbor Commission; past board member of Tarrant County Easter Seal Society, Texas Boys Choir; member of Chevy Chase Presbyterian Church, Washington, D.C.; B.A., TCU, 1961.



W. Burgess Sealy

Since 1968 / Fort Worth

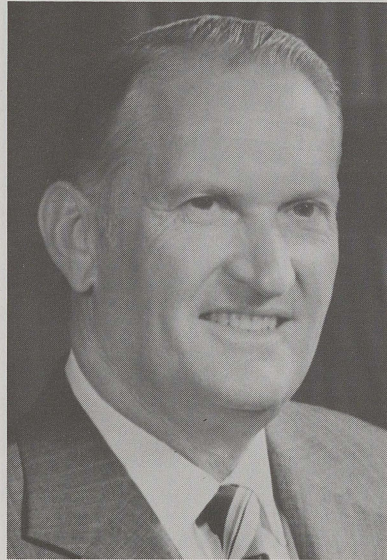
Medicine. Surgeon; chairman, Board of Trustees, Harris College of Nursing (TCU) and member since 1959; diplomate, American Board of Surgeons; fellow, American College of Surgeons; member, Texas Surgical Society, Southwestern Surgical Congress, International Academy of Medicine; past president, Priestley Surgical Society; past president, Tarrant County Chapter, American Cancer Society; member, Matthews Memorial Methodist Church, Theta Xi, Phi Alpha Sigma, Alpha Omega Alpha; M.S. in Surgery, University of Minnesota, 1941; M.D., University of Texas Medical School, 1934; residency, Mayo Clinic.



Ralph B. Shank

Since 1943 / Dallas

Law. Senior Partner, Shank, Irwin, Conant, Williamson & Grevelle; trustee, Southwestern Legal Foundation; member, Dallas, Texas and American Bar Associations; fellow, Texas Bar Association; past district chairman, Oil and Gas Division, Southwestern Legal Foundation; former instructor, School of Law, Southern Methodist University; member and trustee, Central Christian Church; received Thomas Gibson Hobbs Memorial Award as outstanding alumnus, Lynchburg College, 1957; A.B., Lynchburg College, 1927; LL.B., Columbia University, 1930.



Vernon S. Smith

Since 1966 / Dallas

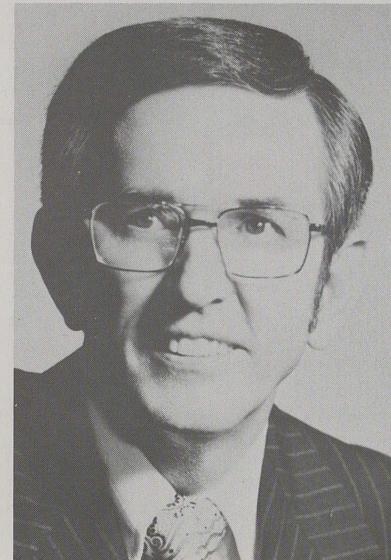
Building and Construction. Partner, Vernon & James Smith Co.; past president, Dallas Home Builders, Dallas Assembly, Oak Cliff Chamber of Commerce; member, American Institute of Architects, National Assn. of Home Builders, Salesmanship Club of Dallas; received Hugh Prather Award as Dallas builder contributing most to community betterment, 1954; named Oak Cliff Man of the Year, 1967; former member, Dallas City Council; member, Oak Cliff Christian Church; B. Architecture, Texas A&M University, 1940.



Charles D. Tandy

Since 1968 / Fort Worth

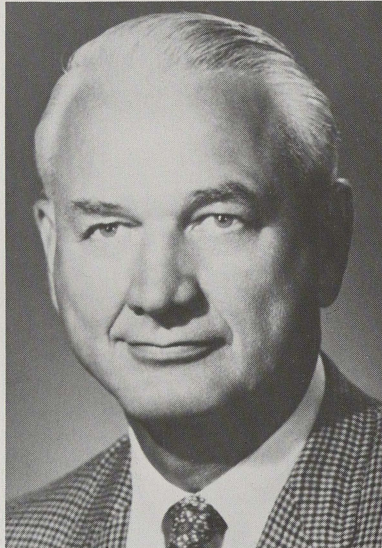
Business, Industry. Chairman of the Board and Chief Executive Officer, Tandy Corp.; director, North Texas Commission, Fort Worth National Bank, Pier I Imports, Fort Worth Community Theatre, Junior Achievement of Fort Worth, Pioneer American Insurance Co.; member, Baptist Church, Texas Manufacturers Assn., Newcomen Society in North America; listed in *Dun and Bradstreet Million Dollar Directory*, *Moody's Industrials*, *Who's Who in Commerce & Industry*, *Who's Who in America*; received Salesman of the Year award, 1969, Sales and Marketing Executives, Newsmaker of the Year award, 1968, Ike Harrison Award of the TCU Management Alumni Association, 1972; B.S., TCU, 1940; alumnus, Harvard Business School; LL.D., TCU, 1971.



Kenneth L. Teegarden

Since 1969 / Fort Worth

EX OFFICIO
Ministry. Executive Minister, Christian Church (Disciples of Christ) in Texas; member of Christian Church organizations: chairman, Board of Higher Education, Board of Directors of Unified Promotion, Conference of State and Area Secretaries and Board Chairmen, Board of Trustees, Jarvis Christian College; delegate to General Assembly of the National Council of Churches in the U.S.A.; named Outstanding Citizen of Vernon, 1954; alumnus, Oklahoma State University; B.A., M.A., 1943, and honorary D.D., Phillips University; B.D., Brite Divinity School, 1949.



Julius G. Truelson

Since 1972 / Fort Worth

Public education. Superintendent of Schools, Fort Worth Independent School District; chairman, American Assn. of School Administrators-National Academy of School Executives; director, Public Television Foundation for North Texas; trustee, United Fund; member, executive board, Boy Scouts of America; appointed by Texas lieutenant governor to Senate Committee to Study Urban Education in Texas; named Male Newsmaker of the Year by Press Club of Fort Worth, 1972; named Outstanding Educator of the Year in Dallas-Fort Worth area by WFAA television, 1972; member, National Education Assn., Texas State Teachers Assn., Texas Assn. of School Administrators, University Christian Church; TCU Letterman: Football—1933-34, basketball—1934-35, tennis—1933-35, track—1933-34; B.B.A., 1935, M.A., LL.D., TCU, 1972.



Glen Turbeville

Since 1961 / Fort Worth

Wholesale supply. Chairman and Chief Executive, Morrison Supply Co.; director, Fort Worth National Bank, Fort Worth National Corp., Fort Worth Belt Railway Co.; past chairman and director, American Supply Assn., American Institute of Supply Assn.; past president and director, Wholesale Distributors Assn.; member, Newcomen Society in North America, Magnolia Avenue Christian Church; TCU Tennis Letterman, 1923-24; B.B.A., TCU, 1925.



Granville T. Walker

Since 1945 / Fort Worth

Ministry. Minister, University Christian Church; secretary, Board of Trustees, Brite Divinity School; past chairman, Christian Church Commission on Brotherhood Restructure; president, International Convention of Christian Churches, 1958, 70th annual Texas Convention of Christian Churches, 1957; chairman, department of Undergraduate Religion, TCU, 1939; past president, Fort Worth Area Council of Churches; "Granville Walker Day" in Fort Worth celebrated by city in his honor; member, Alpha Chi; received Distinguished Alumnus Award, TCU, 1959; B.A., TCU, 1935; B.D., Brite Divinity School, 1937; B.D., Yale, 1942; Ph.D., Yale, 1948; D.D., TCU, 1947.



F. Howard Walsh

Since 1968 / Fort Worth

Oil, Ranching. Independent oil producer and rancher; president, Walsh and Watts, Inc., The Walsh Foundation; vice president, The Fleming Foundation; director, The First National Bank of Fort Worth, Southwestern Exposition and Fat Stock Show, Southern Baptist Foundation; trustee, Southwestern Baptist Theological Seminary; member, State Judicial Qualifications Commission for the State of Texas, numerous oil and cattle organizations; received, with Mrs. Walsh, Patron of the Arts award in Fort Worth, 1970, Distinguished Service Award from Southern Baptist Radio and Television Commission; received Valuable Alumnus Award, TCU, 1967; guarantor, Fort Worth Arts Council, Fort Worth Opera, Fort Worth Symphony Orchestra; member and deacon, Broadway Baptist Church; TCU Tennis Letterman, 1931-33; B.B.A., TCU, 1933.



Harry K. Werst

Since 1971 / Fort Worth

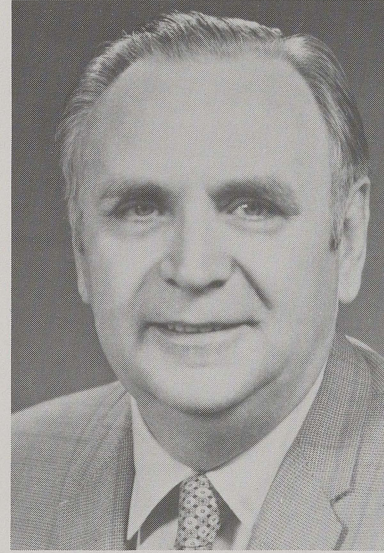
Manufacturing. Chairman, Work Clothes Rental Service Co.; vice president, Williamson-Dickie Manufacturing Co.; director, Fort Worth Steel and Machinery Co., Fort Worth Chamber Development Corp., International Commerce Development Corp.; national past chairman, Defense Supply Assn.; president, Longhorn Council, Boy Scouts of America; past chairman, Board of Trustees, Tarrant County Mental Health and Mental Retardation Center; member, American Society of Mechanical Engineers, American Management Assn., Newcomen Society in North America, executive board, Tarrant County United Fund and Community Council; member and elder, University Christian Church; B.S., Penn State University, 1925.



C. R. Williams Sr.

Since 1959 / Houston

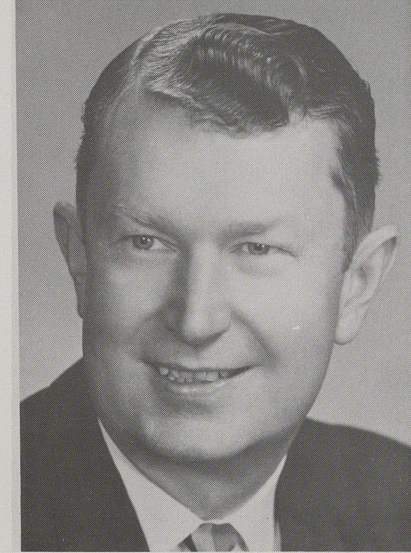
Engineering, Investments. Owner, C. R. Williams Co.; member, American Gas Assn., National Gas Producers Assn., American Institute Mechanical Engineers; past president, National Gas Assn. of America (now NGPA); member, Alpha Chi Sigma; received DeMolay Legion of Honor, 1957; member, Bethany Christian Church; B.S., University of Oklahoma, 1930; alumnus, Johns Hopkins.



Sam P. Woodson Jr.

Since 1959 / Fort Worth

Beverage Industry. President, Coca-Cola Bottling Co. of Fort Worth; managing director, Brown-Lupton Foundation; director, Fort Worth National Bank, Fort Worth Chamber of Commerce, TCU Research Foundation; trustee, Baylor School, Chattanooga, Tenn.; vice chairman, Arts and Sciences Foundation, University of Texas at Austin; member, Advisory Council, The University of Texas Medical Branch at Galveston, Exchange Club, Newcomen Society in North America; member, St. Andrew's Episcopal Church; alumnus, University of Texas; LL.D., TCU, 1972.



James R. Wright

Since 1972 / Port Arthur

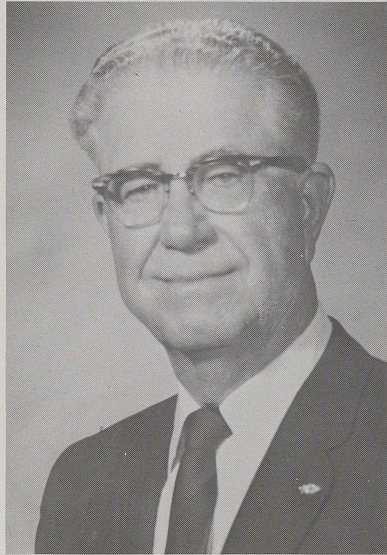
Ministry. Senior Minister, First Christian Church, Port Arthur; member and past president, Port Arthur Ministerial Alliance, Brite Divinity School Alumni Association; past president of Districts 12 and 13, Christian Church; B.A., TCU, 1948; B.D., Brite Divinity School, 1951; D.D., TCU, 1968.

Honorary Members,
TCU Board of Trustees



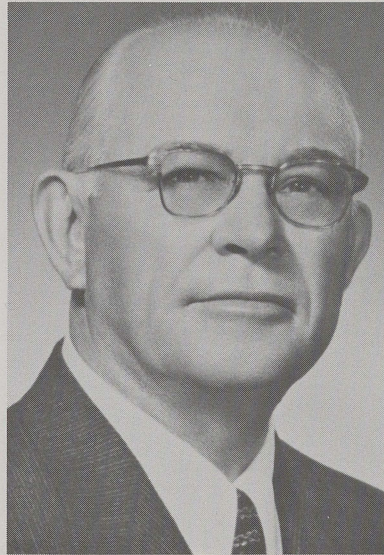
Robert G. Carr

Since 1949 / San Angelo
Oil. Formerly associated with Producers Oil Co. (now Texas Co.); former head, Land, Lease & Scouting Department, Humble Oil & Refining Co., Houston; partner, Preston G. Northrup; 1926-40 as Field Representatives of Texas Pacific Land Trust and Independent Oil Operators, individual representative, 1940-50; trustee, educational institutions in Fort Worth and San Angelo; served as TCU trustee, 1949-1972; director, San Angelo National Bank; advisory board member, Salvation Army in San Angelo, West Texas Boys Ranch; member American Assn. of Petroleum Landmen, Independent Petroleum Assn. of America; received Silver Beaver Award, Boy Scouts of America; member, First Christian Church; provided funds for construction of Robert Carr Chapel, TCU, named in his honor; alumnus, Kentucky Wesleyan College; LL.D., TCU, 1954, at dedication of Religion Center.



Earl E. Combest

Since 1966 / Dallas
Investments. Co-owner, East Texas Development Co., Ltd.; director, Great American Reserve Insurance Co., Great American of Dallas Fire and Casualty Co., Great American of Dallas Insurance Co., Home Mortgage and Investment Co.; member until retirement in 1965 of many insurance organizations and Mortgage Bankers Assn.; served as TCU trustee, 1966-1969; board member, East Dallas Christian Church; received Valuable Alumnus Award, TCU.



H. B. Fuqua

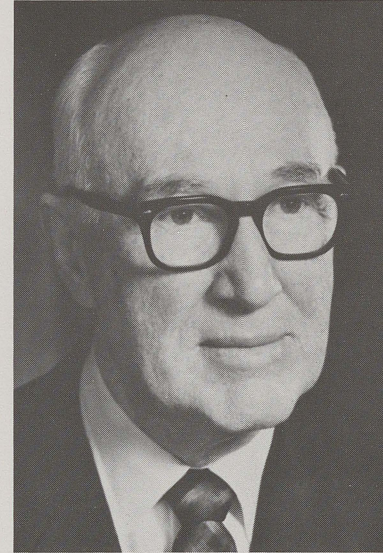
Since 1952 / Fort Worth
Banking, Oil. Honorary chairman of board, Fort Worth National Bank; past president, American Assn. of Petroleum Geologists; trustee, Southwest Medical Foundation; past director, American Petroleum Institute; served as TCU trustee, 1952-1971; member, Broadway Baptist Church; received Golden Deeds Award with two others, 1967; B.A., University of Oklahoma.



George P. Kuykendall

Since 1943 / Lubbock

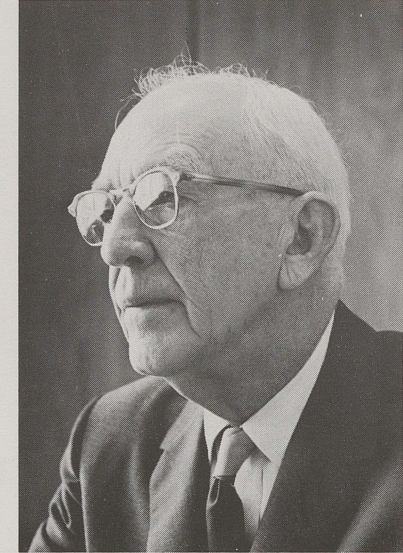
Investments. President, Kuykendall Investment Co.; active in banking, 1911-24; Chevrolet dealer, 1924-55; past president, Texas Automobile Dealers; served as TCU trustee, 1943-64; Kiwanis; elder, First Christian Church; trustee, Jarvis Christian College since 1958.



Murray Kyger

Since 1961 / Fort Worth

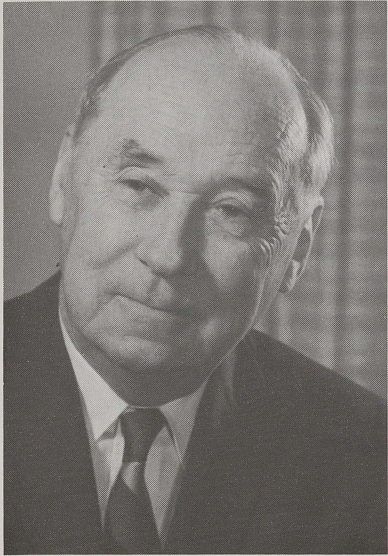
Banking. Chairman of the Executive Committee, First National Bank of Fort Worth; Dean of Bankers, Southwestern Graduate School of Banking; past president, Reserve City Bankers Assn.; director, Federal Reserve Bank of Dallas, Southwestern Life Insurance Co. of Dallas; member of board, Southwestern Medical Foundation, University of Texas Southwestern Medical School, Dallas; director, Southwest Center for Advanced Studies; served as TCU trustee, 1961-72; member, St. Andrew's Episcopal Church, Beta Gamma Sigma, Sigma Iota Epsilon, Exchange Club of Fort Worth; B.B.A., University of Texas; LL.B., South Texas School of Law.



J. Lee Johnson Jr.

Since 1958 / Fort Worth

Retired. Interest in oil, real estate, banking; retired Chairman of Board and Chief Executive Officer, First National Bank, 1961; honorary Chairman, United Fund; director, member of executive committee, Southwestern Exposition and Fat Stock Show; past president, Lumberman's Assn. of Texas, Fort Worth Museum of Science and History; received Golden Deeds Award, Exchange Club, 1950, B'nai B'rith L. F. Shanblum Lodge Civic Achievement Award, 1962; served as TCU trustee, 1958-68; member, St. Patrick's Co-Cathedral; honorary member, TCU Alumni Association.



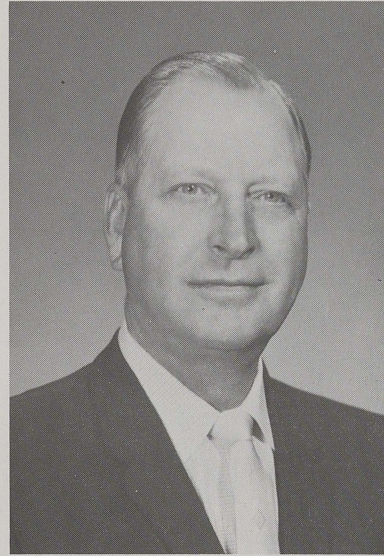
Neville G. Penrose

Since 1968 | Fort Worth
Oil, Ranching. Chairman of Board, Penrose Production Co.; oil and ranching interests in nine states including Alaska, and Republic of Mexico; founder and president, Penrose Good Neighbor Foundation; past president, International Good Neighbor Council; honorary chairman for life, Texas Good Neighbor Commission; founder and past chairman, Fort Worth Wildcatters and recipient of Man of Year award; received citation and is past director, National Conference of Christians and Jews; member, Methodist Church; received Operation Amigos Award from Comité Norteamericano Pro-Mexico, and many other awards; long service on state Democratic executive committee and delegate to national convention; served as TCU trustee, 1968-72; past director, Texas Independent Producers and Royalty Owners Assn., Mid-Continent Oil and Gas Assn., Independent Petroleum Assn. of America, League of United Latin American Citizens, Camp Fire Girls, Warm Springs Foundation; LL.D., TCU, 1968.



W. M. Sherley

Since 1949 | Anna
Farming, Ranching. Owner, Sherley Grain Co., Anna; president, Sherley-Anderson Lazbuddie Elevator, Bovina; active in farming, ranching, soil conservation, education, athletics; member, Christian Church; served as TCU trustee, 1949-64; former manager, TCU baseball team; former chairman, athletic committee, TCU Board of Trustees; alumnus, TCU.

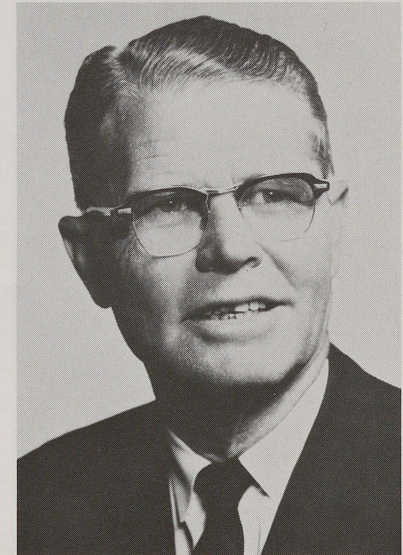


A. D. Weatherly

Since 1949 | Amarillo
Ranching, Investments, Oil. President, Panhandle Producers & Royalty Assn.; member, New Mexico Cattle Growers Assn., Texas Mid-Continent Oil & Gas, Independent Petroleum Assn.; member, Lambda Chi Alpha, Panhandle Plains Historical Society; served as TCU trustee, 1949-72; past chairman of board, First Christian Church; TCU Golf Letterman, 1931-33; B.B.A., TCU, 1932; LL.D., TCU, 1968.

Board of Trustees, Brite Divinity School

The Board of Trustees of Brite Divinity School conducts a graduate professional school of theology as one of the constituent units of Texas Christian University which has as its function the training of candidates for all phases of Christian ministry. The number of trustees shall, at all times, be not less than nine nor more than seventeen, all of whom must be active members of a church and four-fifths in number of whom must be active members of a Christian Church (Disciples of Christ). A majority must be residents of the State of Texas and at least one-fourth of the members must be members of the Board of Trustees of Texas Christian University.

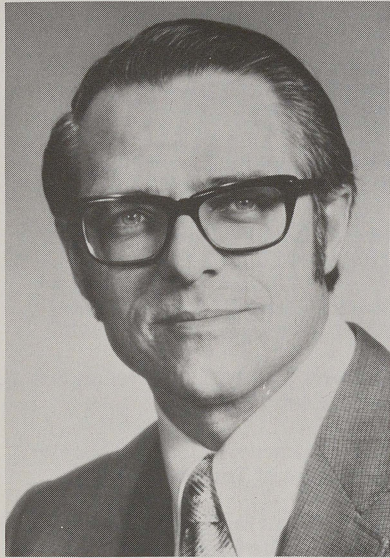


Newton J. Robison

Since 1962 / Amarillo

CHAIRMAN

Ministry. Minister, Lake Tanglewood Community Church; member, Panhandle Regional Planning Commission; alderman, Lake Tanglewood; member, Board of Trustees, Foundation for Pastoral Care; A.B., Southwestern University, 1923; B.D., Brite Divinity School, 1931; D.D., TCU.



Eugene W. Brice

Since 1972 / Wichita Falls

Ministry. Minister, First Christian Church, Wichita Falls; president elect, Christian Church in Texas; member, General Board, The Christian Church in the United States, Executive Committee of General Board for Christian Church in Texas; chairman, Division of Institutional Ministries, Christian Church in Texas; former pastorates in Alpine, Fort Worth and Dallas; former professor of biblical languages and literature, the Protestant Seminary, San Juan, Puerto Rico; member, Division of Ecumenical Ministries, Texas Conference of Churches; former chaplain for Dallas Police Dept.; B.A., TCU, 1951; B.D., Brite Divinity School, 1954; M.A., Ph.D., Yale University.



George C. Davis

Since 1970 / Shamrock

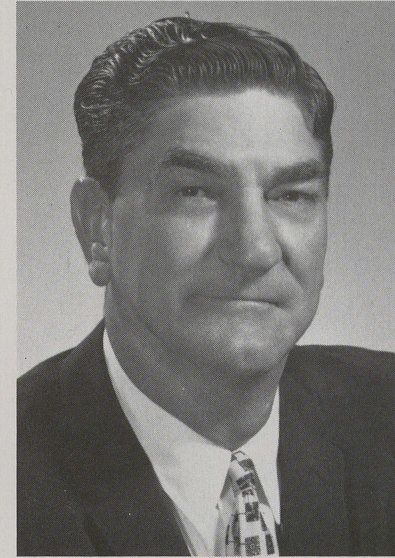
Ranching. Independent rancher; member Kappa Sigma; member, First Christian Church; B.S., Oklahoma State University, 1939.



John K. Hackley

Since 1971 / Jacksboro

Banking. Senior Vice President, The First National Bank, Jacksboro; member, Lions Club; member, Memorial Christian Church; alumnus, Lubbock Business College, Texas A&M University.



Ralph N. Hooks

Since 1972 / Abilene

Business. President, Lydick-Hooks Roofing Co.; member, Board of Trustees, McMurry College; member of board, Texas Employers Insurance Assn. of Dallas, West Central Texas Municipal Water District, West Texas Utilities Co., First National Bank of Abilene; mayor of Abilene, 1966-69; past president, Abilene Chamber of Commerce, United Fund; outstanding citizen award, 1966; member and elder, First Christian Church; B.B.A., Texas Tech, 1940.

Brite Divinity School Board of Trustees



William J. Laidlaw Jr.

Since 1967 / El Paso

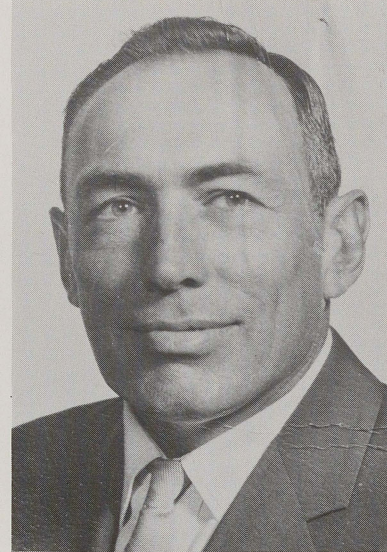
Business. President, International Plata, Inc.; past president, Fort Worth Recreation Board; member, University Christian Church, Fort Worth; B.B.A., SMU, 1942.



Wayne Moore

Since 1968 / Midland

Oil, Ranching. Partner, Moore & Gilmore; president, Pleasanton Well Service; vice president, Trans-Pecos Seed & Fertilizer, Trans Pecos Chemical, Bes-Tex Insecticides; president, Exchange Club; member, Midland Chamber of Commerce; member and chairman, Board of Elders, First Christian Church; B.S., Oklahoma University, 1940.



H. H. Phillips Jr.

Since 1956 / San Antonio

Oil. Independent oil operator; member, The Argyle, San Antonio, Duquesne Club, Pittsburgh, Pa.; alumnus, University of Texas, University of Michigan, St. Mary's Law School; B.S., University of Colorado.

Brite Divinity School Trustees Also Serving on Another Board of Trustees*

W. Oliver Harrison — Vice Chairman of Brite Board, University Board of Trustees, 1946

George Kuykendall — Honorary Member, TCU Board of Trustees, 1965

Michael Saenz — University Board of Trustees, 1972

Kenneth Teegarden — University Board of Trustees, ex officio, 1970

Granville T. Walker — University Board of Trustees, 1944

A. D. Weatherly — Honorary Member, TCU Board of Trustees, 1964

*Pictures and biographical sketches featured under designated Board of Trustees.

Board of Directors, Harris College of Nursing

The purpose of the Board of Directors of Harris College of Nursing is to conduct the affairs of the College so that it will meet the highest standards of education for young women and young men desiring to attain the degree of Bachelor of Science in Nursing. The Board of Directors consists of seven members, each serving for seven years.



W. Burgess Sealy

Since 1959 / Fort Worth

CHAIRMAN

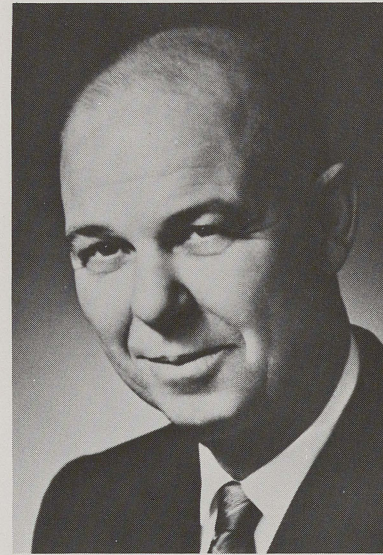
Medicine. Listed under TCU Board of Trustees.



James B. Ansley

Since 1972 / Fort Worth

Ministry. Chaplain, Harris Hospital, Fort Worth; director, Fort Worth Regional Council on Alcoholism, Counseling Center, TCU, Big Brothers, Inc.; member, Board of Planned Parenthood, American Assn. of Marriage Counselors, First Methodist Church; B.A., Friends University, 1938; B.D., Perkins School of Theology, SMU, 1941; graduate study, Menninger Foundation.



John W. Cox

Since 1971 / Fort Worth

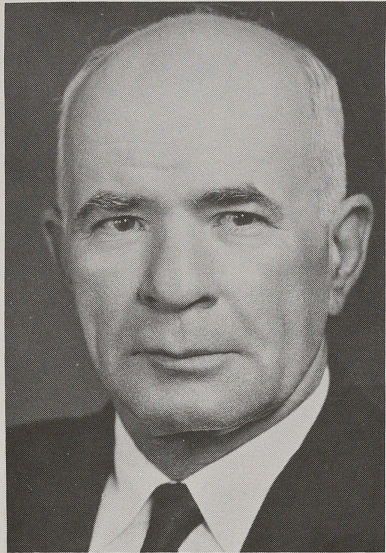
Oil, Ranching & Cattle-raising. Director, Trustee & Vice President, Mabee Petroleum Companies, Mabee Foundation.



Maybelle H. Hudgins

Since 1954 / Fort Worth

Medicine. Consultant, Medical Records, Fort Worth hospitals; member, Texas Medical Record Assn., American Medical Record Assn., Assn. of Listed Consultants, Dallas Medical Record Assn.; R.R.L., C.R.L., AMRA Institutes, Chicago.



C. C. Jowell

*Since 1958 / Cleburne
Medicine.* Retired physician; member,
Texas State Medical Society, Johnson
County Medical Society; member,
United Methodist Church; alumnus,
Southwest Texas State College, 1924;
M.D., Baylor University Medical
School, 1930.



A. M. Pate Jr.

*Since 1969 / Fort Worth
Oil.* President and Chairman of the
Board, Texas Refinery Corp; named
Fort Worth's Outstanding Young Man
of 1954, Fort Worth Salesman of the
Year, 1969; received Order of Merit
Medal from government of Luxem-
bourg, 1972; alumnus, TCU; LL.D.,
Austin College, 1970.

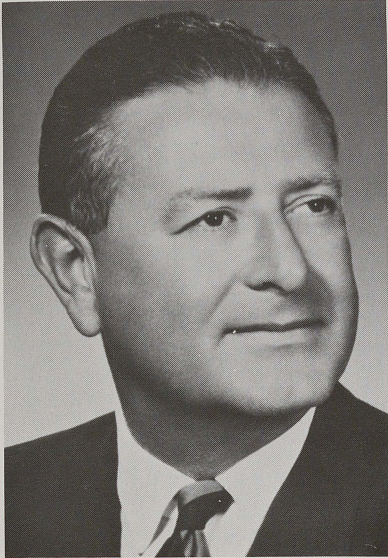


Clyde A. Penry

*Since 1946 / Fort Worth
Director.* Tarrant Savings Assn.,
Seminary State Bank, Tarrant County
Water Control and Improvement
District No. 1; 50 year member,
Longhorn Council Executive Board,
Boy Scouts of America; received 50
years service award, Boy Scouts of
America, 1972; member, First United
Methodist Church.

Board of Directors, TCU Research Foundation

The Texas Christian University Research Foundation is a non-profit corporation organized to support the research programs of Texas Christian University. The Board of Directors, which is the governing body of this corporation, consists of not less than twenty-one nor more than twenty-seven persons. The first four places are filled automatically by the four officers of Texas Christian University holding the respective offices equivalent to: (1) Its Chief Executive Officer, (2) its Chief Fiscal Officer, (3) its Chief Academic Officer, and (4) its Chief Development Officer.



Louis H. Barnett

Since 1963 / Fort Worth

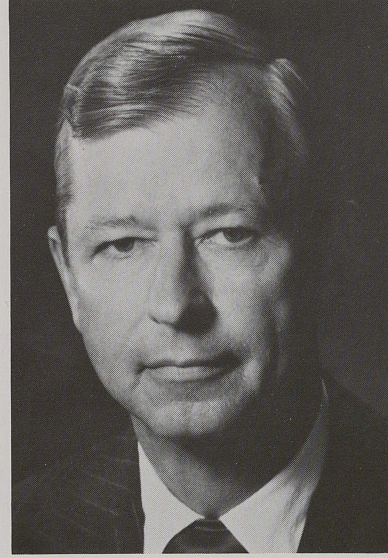
CHAIRMAN
Plastics. International plastic consultant; president, Madlyn B. and Louis H. Barnett Foundation; chairman, Cabinet on Israel Affairs, B'nai B'rith International Council; member, Big Brothers of Tarrant County, Inc., Tarrant County Crime Commission, Board of Governors, Tel Aviv University; trustee, Fort Worth Children's Hospital; holder of numerous patents in the plastic technical, fabrication and product field; member, Society of Plastics Engineers, Inc., Society of Plastics Industry, Inc., Texas Inventors Assn., Newcomen Society in North America; B.B.A., Northeastern University, 1944.



Tom Barnett

Since 1967 / Fort Worth

Management. Vice President and Managing Director, Neiman-Marcus in-the-Square, Fort Worth; president, Big Brothers of Tarrant County; director, Better Business Bureau of Fort Worth, Inc., Fort Worth Arts Council, Symphony and Opera, Fort Worth Chamber of Commerce, Fort Worth Air Power Council, Day Care Assn. of Fort Worth and Tarrant County, John Peter Smith Hospital Nurses Advisory Board; member, Fort Worth Progress, Inc., Future Fort Worth; vice chairman, advisory council, School of Business, University of Texas at Arlington; member, All Saints Episcopal Church; B.B.A., University of Texas.



Lewis H. Bond

Since 1972 / Fort Worth

Banking. Chairman of the Board and Chief Executive Officer, Fort Worth National Bank; director, Fort Worth Chamber of Commerce, Texas Research League, Southwestern Exposition and Fat Stock Show, State Reserve Life Insurance Co., Millers Insurance Group, Texas and Pacific Railway Co.; past president, Fort Worth Chamber of Commerce, Tarrant County United Fund; state vice president, American Bankers Assn.; federal advisory councilman, Eleventh Federal Reserve District; trustee, Austin College, Saint Joseph Hospital; member, Assn. of Reserve City Bankers, Texas Bankers Assn. Legislative Committee; elder and trustee, First Presbyterian Church; B.S., University of Oklahoma, 1947.

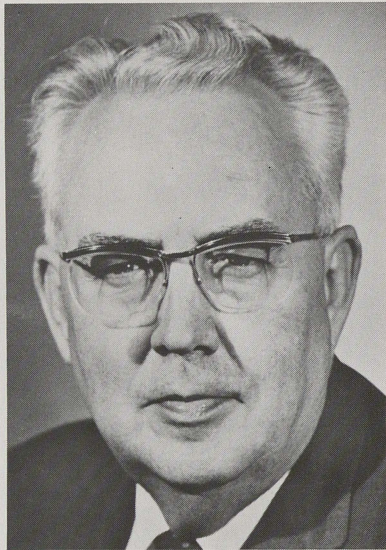


Malcolm K. Brachman

Since 1963 / Dallas

Oil, Insurance. Executive, Northwest Oil Co., Dallas, Pioneer American Insurance Co., Fort Worth; director, St. Marks School of Texas, Board of Development, SMU, Jarvis Christian College, Children's Medical Center, Dallas Council on World Affairs; member, American Assn. for Advancement of Science, American Society of Chartered Life Underwriters, Research Society of America, American Assn. of Physics Teachers, American Management Assn., Institute of Radio Engineers; member, Temple Emanu-El; B.A., Yale University, 1945; M.A., Ph.D., Harvard University.

TCU Research Foundation Board of Directors



Jack L. Butler

Since 1963 / Fort Worth

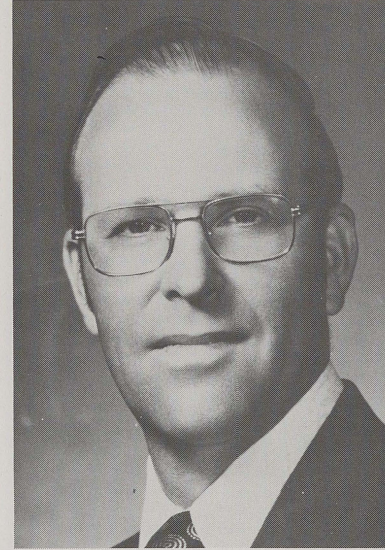
Print Media. Editor, Fort Worth Star Telegram; first president, State Assn. of Sigma Delta Chi; past president of Fort Worth chapter, Sigma Delta Chi; member, American Society of Newspaper Editors, Exchange Club; received National Conference of Christians and Jews Brotherhood Award, 1972; received Air Force Assn. presidential citation, 1972; trustee, SMU; member, Meadowbrook Methodist Church; alumnus, TWC; B. Journalism, University of Texas, 1939.



Edwin J. Ducayet

Since 1963 / Fort Worth

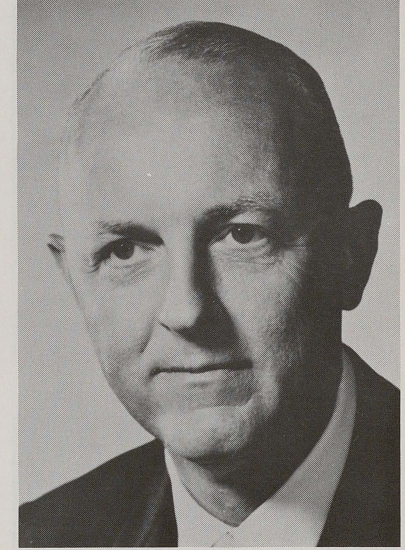
Engineering. Chairman, Bell Helicopter Co.; advisory director, First National Bank of Fort Worth; director, Casa Manana, SMU Foundation for Science and Engineering; member, Advisory Board of Directors, Assn. of the United States Army, National Citizens Committee of United Community Campaigns of America; member, Texas Advisory Board, Radio Free Europe, Board of Governors, Aerospace Industries Assn.; member and past president of the American Helicopter Society; received the Dr. Alexander Klemin Award, foremost award of the American Helicopter Society, 1972; B.S., Massachusetts Institute of Technology, 1931.



James S. Garvey

Since 1964 / Fort Worth

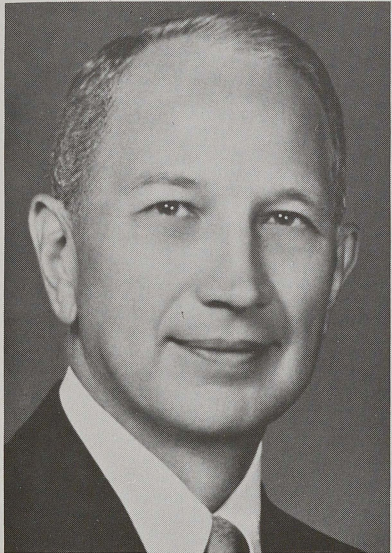
Oil, Ranching. Chairman of the Board, Garvey Elevators, Inc., Service Oil Co.; president, Rafter-J Ranch, Inc., Garvey Ranch Management, Inc., Jim Garvey Ranches, Inc., JaGee Corp., J. C. R. Investments, Inc.; partner, Garvey Farms Management Co.; director, Fort Worth & Denver Railroad, Fort Worth National Bank, Fort Worth Metropolitan YMCA, Tarrant County United Fund; trustee, Texas 4-H Foundation; member, Exchange Club, Newcomen Society in North America, National Marketing Advisory Committee, U.S. Department of Commerce, Texas State Republican Executive Committee; B.A., Wichita State University, 1947.



Burl B. Hulsey Jr.

Since 1972 / Fort Worth

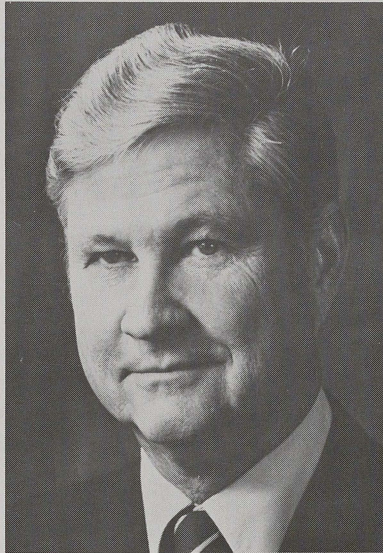
Engineering, Utilities. President, Texas Electric Service Co.; director, Texas Atomic Energy Research Foundation, National Electric Reliability Council, Electric Reliability Council of Texas; vice president, Fort Worth Chamber of Commerce, West Texas Chamber of Commerce; director, North Texas Commission, United Fund, Tarrant County Community Council, YMCA; chairman, Leadership Fort Worth, City Center Sector Planning Committee; member, Institute of Electrical and Electronic Engineers, Texas Society of Professional Engineers; chairman of board, University Christian Church; B.S., Texas A&M University, 1939.



Robert E. Klabzuba

Since 1969 / Fort Worth

Oil, Geology. Consulting oil operator and geologist; member, American Assn. of Petroleum Geologists, Society of Exploration Geophysicists, Fort Worth Geological Society, Fort Worth Geophysical Society; member, Phi Beta Kappa, Sigma Xi, Phi Eta Sigma; member, Meadowbrook United Methodist Church; B.S., University of Oklahoma, 1940.



Roy M. Mays

Since 1967 / Denver, Colo.

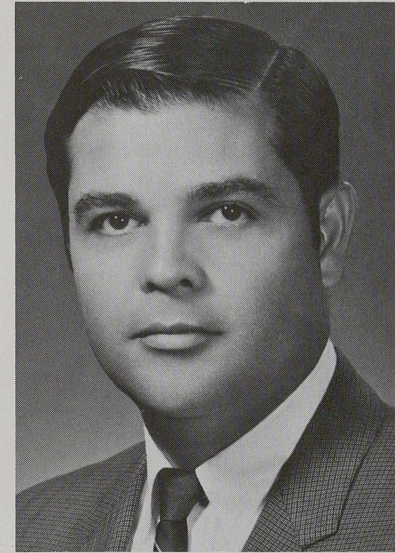
Oil. Vice President & Regional Manager, Rocky Mountain Region for Continental Oil Co.; vice president and director, Oklahoma Petroleum Council; director, International Petroleum Exposition, Fort Worth National Bank; trustee, Austin College; member, Advisory Board of the College of Engineering & Physical Sciences, University of Tulsa; member, American Petroleum Institute, Independent Petroleum Assn. of America, Harvard Advanced Management Alumni Assn., Society of Former Agents of the FBI. Listed in *Who's Who in America*; graduate, North Texas School of Law, Advanced Management Program of the Harvard Business School.



J. Clark Nowlin

Since 1971 / Fort Worth

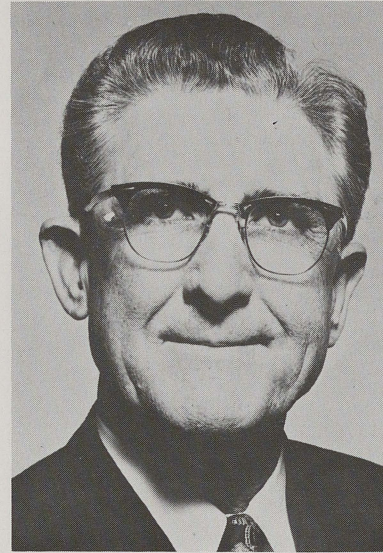
Real Estate. Partner, Harold Nowlin Co.; member, Phi Delta Theta, University Christian Church; B.B.A.; University of Texas, 1955.



Bill D. Serrault

Since 1973 / Fort Worth

Utilities. Division Manager, Southwestern Bell Telephone Co.; member, Matthew Memorial United Methodist Church; alumnus, Washington University, Dallas College-SMU, Christian College of Southwest.



O. James Sowell

Since 1963 / Fort Worth

HONORARY

Higher Education. Retired; former Assistant to the Chancellor, TCU; ordained minister, the Christian Church (Disciples of Christ); pastorates: Fulton, Ky., Garber and Oklahoma City, Okla., Los Angeles Calif.; positions at TCU: Executive Director of University Development, Assistant to the Chancellor, Assistant to the Chancellor for Special Services; listed in *Who's Who in America*, *Who's Who in the South and Southwest*, *Who's Who in American Education*; co-author, *Strength for Service*; graduate, Phillips University; graduate work, University of Edinburgh, Scotland; LL.D., College of Law, Chicago; L.H.D., Los Angeles City College.

Members ex officio

James M. Moudy, Chancellor, TCU

L. C. White, Vice Chancellor and Chief Fiscal Officer, TCU

Thomas B. Brewer, Vice Chancellor and Dean of the University, TCU

Clyde D. Foltz, Director of Development, TCU

E. Leigh Secrest, President, TCU Research Foundation

Research Foundation Trustees Also Serving on University Board of Trustees*

Earle B. Barnes — 1966

William C. Conner — 1963

Beeman Fisher — 1963

Bayard H. Friedman — Vice Chairman, 1968

Cecil H. Green — 1969

Marion L. Hicks — 1963

Murray Kyger — Honorary Member, TCU Board of Trustees, 1963

Paul Mason — 1970

Sam Woodson Jr. — 1963

*Pictures and biographical sketches featured under University Board of Trustees.



