

# World's Fair Bomb \$8,000,000 Plane Factory, Emp

## Hall-Aluminum's Plant Will Become Largest in Texas

Spot at World's Fair Where Bo

### Thinking Out Loud

"A straight line is the shortest distance between two points."—Euclid.

BY LYNN LANDRUM

### Group Medicine Started

**A**NNOUNCEMENT by the Dallas County Medical Society that group medicine is to have a real tryout here in Dallas is of no small account. It is an example of the American way of meeting a problem in social need. It deserves the sympathetic co-operation of all concerned. If it succeeds, it will be a very great thing, both for the medical profession and for the public.

In general, the scheme calls for its application first of all to the employees of the Ford Motor Company in Dallas, each employee to pay \$1.50 a month, sick or well, in return for which payment he is to receive medical services as needed. Furthermore, the patient under the plan chooses his own physician, just as you choose your own physician

### Site Near Lake To Be Chosen For Big Industry

Dallas stepped strongly into the national defense program picture Thursday when it was announced an \$8,000,000 factory for the production of warplanes, both bombers and pursuit ships, will be erected here in the near future.

The industry will be the largest single plant in Texas from the standpoint of personnel involved—5,000 employees.

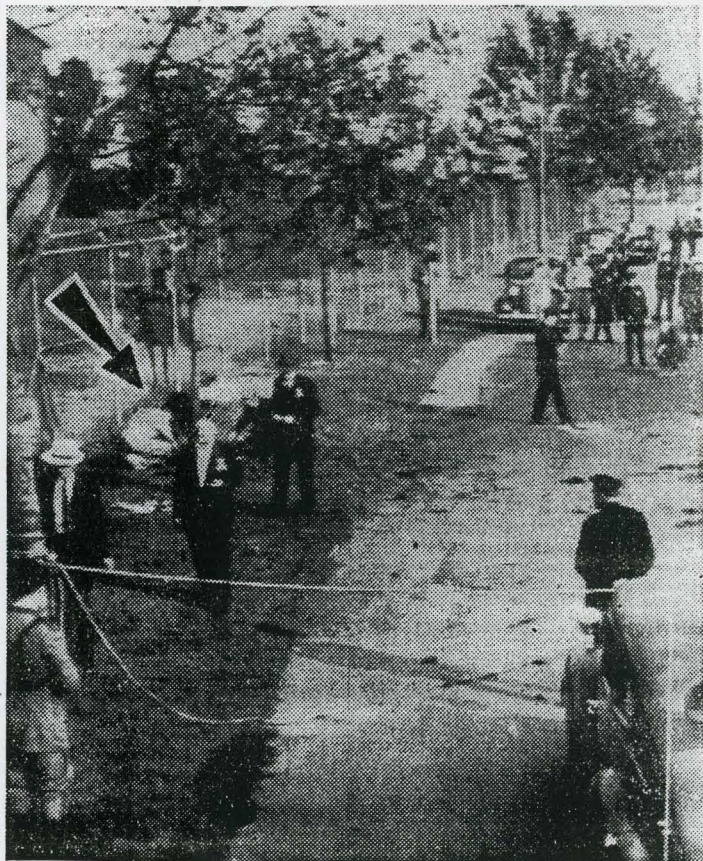
The Hall-Aluminum Aircraft Corporation will erect the plant and manufacture planes and parts largely on orders sublet to it by the Consolidated Aircraft Corporation of San Deigo, Calif.

Announcement of the new industry, the largest in Dallas' history, was made at San Diego by David G. Fleet, assistant to the president of Consolidated, and in Dallas by the Chamber of Commerce, which has been working on the deal for some time.

### Can Use Mountain Creek.

Since the concern will manufacture both sea and land planes a site adjoining a large body of water is required and available sites include tracts at Mountain Creek, White Rock and Lake, Dallas.

Permission of the Dallas Power & Light Company for use of Mountain Creek for testing and other traffic on water has been granted.



Here is the roped-off section at the World's Fair where a bomb exploded leaves off the tree around which three detectives are kneeling, seeking clue ground is the Polish Pavilion. Steeple in the background is the Netherl

## British Get Hundred In 10-Minute Battle

Customs Men

World's Largest S

## b Kills Two Detectives

## employing 5,000, to Be Built Here

re Bomb Blast Killed Two Detectives

## Flame-Thrower Found Planted in British Pavilion

### Officers Die as They Examine It; Blast Follows Telephone Warning



—Associated Press WIREPHOTO.

bomb exploded Thursday (arrow, left) near a wire fence. The bomb blew the sheet-covered body of one of the victims, sheet-covered, is in the center. Fore-

NEW YORK, July 4 (AP).—A flame-throwing bomb, disguised as a portable radio, killed two detectives Thursday and injured five others—two critically—after they had rushed it from its hiding place in the British Pavilion at the New York World's Fair.

The blast tore a hole five feet wide and four feet deep in the ground of a little-used plot, smashed two huge glass windows in the dining salon of the Polish Pavilion, 150 yards away, and ripped the clothing from the bodies of its mangled victims.

The explosion shook the lower end of the foreign section and sent tremors of fear through the Independence Day crowd of 168,000.

### Warning Given Switchboard Operator.

The bomb—police said it was a time device—spread destruction thirty-six hours after a mysterious voice in a telephone call Tuesday had ordered the pavillion switchboard operator to "get out of the building, we're going to blow it up."

Killed in the blast were Detectives Joseph J. Lynch and Ferdinand Socha.

In critical condition were Detectives William J. Federer, 26, and Joseph Gallagher. Legs of both men were broken, each was severely burned and cut, and Gallagher's skull possibly was fractured.

The bomb had been secreted in the fan room on the second floor of the pavillion. It had been there since Wednesday morning, ignored, because an employee believed it belonged to a charwoman.

Thursday, Electrician William Strachan took the case to Cyril Rawlings, assistant to British Commissioner-General Cecil M. Pick-



## dreds of French Ships

## attle, Lose One Seaman

argest Submarine Taken:

# Site Near Lake To Be Chosen For Big Industry

Dallas stepped strongly into the national defense program picture Thursday when it was announced an \$8,000,000 factory for the production of warplanes, both bombers and pursuit ships, will be erected here in the near future.

The industry will be the largest single plant in Texas from the standpoint of personnel involved—5,000 employees.

The Hall-Aluminum Aircraft Corporation will erect the plant and manufacture planes and parts largely on orders sublet to it by the Consolidated Aircraft Corporation of San Deigo, Calif.

Announcement of the new industry, the largest in Dallas' history, was made at San Diego by David G. Fleet, assistant to the president of Consolidated, and in Dallas by the Chamber of Commerce, which has been working on the deal for some time.

## Can Use Mountain Creek.

Since the concern will manufacture both sea and land planes a site adjoining a large body of water is required and available sites include tracts at Mountain Creek, White Rock and Lake Dallas.

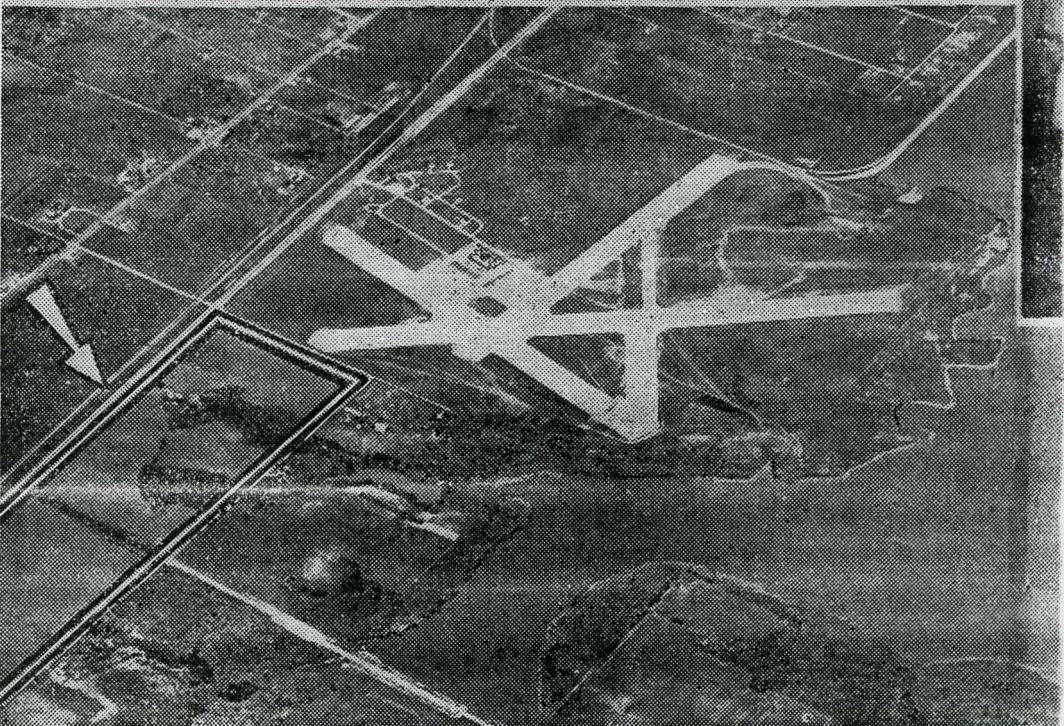
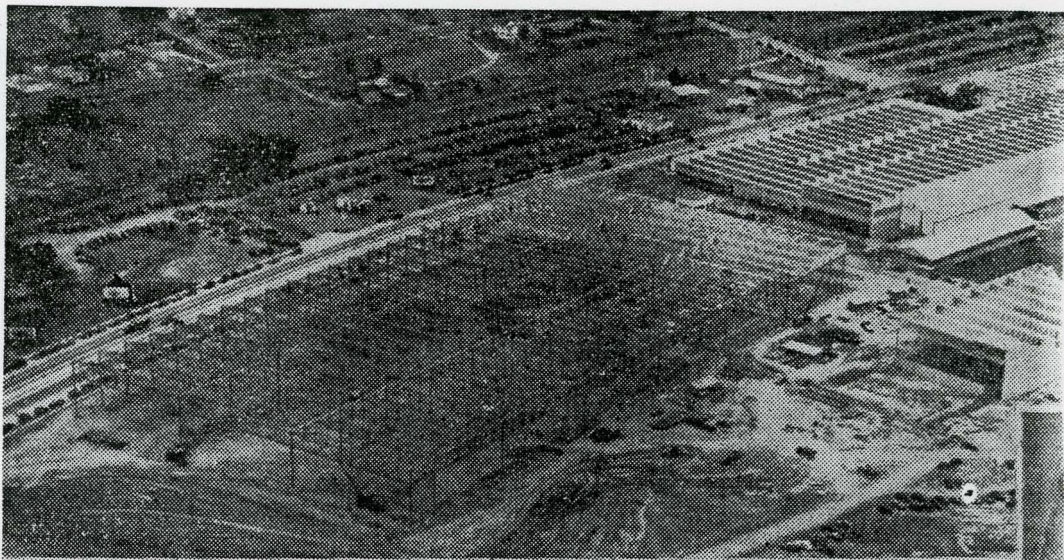
Permission of the Dallas Power & Light Company for use of Mountain Creek for testing and other traffic on water has been granted, and the government is expected to consent to the use of Hensley Field runways for similar purposes if desired.

First units of the new plant are expected to be completed and put into production in six to eight months. Preliminary plans for the buildings are drawn up, and as soon as the site is chosen, con-

See FACTORY on Page 3.

## Capitol Hears

# Airplane Plant, Duplicating San Diego Building



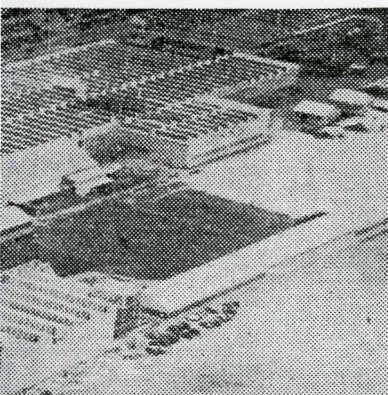
Dallas' \$8,000,000 airplane factory to be built in the near future by the Hall-Aluminum Corporation will duplicate the San Diego buildings of the Consolidated Aircraft

Corporation as well as the new extension shown in the top picture. Situated on a 350-acre site not yet chosen, its main assembly building will be about 1,500 feet

long by 200 feet wide. Other buildings around it will be on a similar scale. The lower photo shows one site, adjoining Mountain Creek Lake immediately west of

F  
g  
c  
n  
p

# ings, to Be on Lake



her  
a a  
oto  
ain  
of

—Photo by Lloyd M. Long.  
Hensley Field. Inset is Ben Critz,  
general manager of the chamber  
of commerce, whose work had  
much to do with obtaining this im-  
portant industry for Dallas.

west coasts but were said to have done little damage. incendiary bombs were dropped on a building in a southeast coast but air raid precautions

workers, who had been on the job for thirty-six hours without a break, prevented fires from spreading.

The score or more of bombers

which assailed Portland harbor in waves of three were retaliating perhaps for raids by the British Wednesday on German communications, oil plants, transport, depots and airports in Germany, the Netherlands, Belgium and northwestern France.

Hundreds of residents of Portland ignored alarms to watch the German assault on the island naval base which Great Britain built to guard against an enemy thrust into the English Channel from the west.

They saw clouds of dense smoke pouring from the stricken naval auxiliary while small craft in the harbor rushed in to rescue the injured.

#### Running Battles in Air.

They saw British Spitfire fighters engage German bombers over the sea.

The Germans scored a direct hit on the auxiliary vessel.

"I saw several running battles in the air," said one witness, "and one of the attackers disappeared out to sea, losing height rapidly with smoke pouring from the tail.

"Just before the all-clear signal I saw antiaircraft shells bursting all around a long German plane and it, too, appeared to crash into the sea."

A lighterman on his small loading ship said, "I saw a plane coming and I shouted to my mates, 'There's a Jerry!' I said my prayers. They dropped one bomb and missed, but we were drenched with spray.

"The plane opened up with machine guns and sprayed the decks of a warship. One bomb exploded on the warship and then the Germans turned their guns on us. We all escaped."

#### Forty Nazi Planes Destroyed.

The Air Ministry, announcing widespread raids on Germany and the German-occupied Low Countries and France, said the Royal Air Force had destroyed forty German planes from June 23 to July 4, inclusive, as against thirty British planes lost by enemy action.

This declaration came in reply to a German communique saying the score was seventy-five to twelve in favor of Germany.

Royal Air Force operations included attacks on airdromes at Evere in Belgium, Ypenburg and Dekooy in the Netherlands, Aachen in Germany and Merville in northwestern France, all possible bases for aerial invasion of England.

Troop-carrying planes and other aircraft on the ground were set afire at Evere and Ypenburg, the Air Ministry communique said. One plane is missing from the night operations.

The Air Ministry called for civilian pilots to take commissions in the R.A.F. and announced it had reduced the number of hours of required solo flying from 200 to 150.

## Factory

CONTINUED FROM FIRST PAGE

struction will be rushed on a twenty-four-a-day schedule.

Even before work ever starts on its permanent building, Hall-Aluminum plans to lease temporary quarters, which have not been selected, in the city of Dallas proper and begin production of parts. This is expected to begin in the next two or three weeks. In that plant, a far-reaching program of training of personnel for the new quarters will begin in short order.

At present, Hall-Aluminum is situated at Bristol, Pa. The lease on its property there is up, and the corporation is making this move in line with plans of the moveaviation industry and the War Department to locate at least part of plane production away from heavily industrialized centers in exposed positions to points of greater safety inland.

Hall-Aluminum is one fourth owned by the Aluminum Company of America. Consolidated itself plans no building here.

In line with the government's

policy of contributing materially to the cost of speeding up airplane production in safe areas like this, a major portion of the \$8,000,000 involved is expected to be federal funds.

Important to the manufacture, service and repair of amphibian planes is location, as at Dallas, on fresh water. This is due to the fact that corrosion of the metal parts of the ships is much more where they rest in salt water.

#### \$1,000,000-a-Month Pay Roll.

A pay roll of around \$1,000,000 a month is expected when the plant gets into full production. Only executive and supervisory personnel will be brought from Bristol, Pa., the rest to be hired locally.

Orders amounting to \$100,000,000 are said to be on the books of Consolidated and Hall-Aluminum. The latter is a \$10,000,000 corporation.

Bringing this, one of the largest of all inland aircraft producing companies, to Dallas is the culmination of a long effort made by the Dallas Chamber of Commerce.

"I consider this to be one of the greatest assets yet gained by Dallas," J. B. Adoue, president of the chamber, said. "This will be the biggest single industrial development ever to come to Texas. I look for it to add at least 25,000 persons to the population of Dallas. It is the opening wedge in the big-time industrial decentralization impetus coming out of the national preparedness program."

The chamber president heaped praise on Ben Critz, general manager of the chamber, for doing the lion's share of the work that it took to convince Hall-Aluminum Dallas is the place and to help the corporation gather the tremendous amount of technical information necessary before the decision could be made to move here.

#### Committee Set Up.

Adoue said the bringing here of this company ranked in importance along with such other history-making developments of the city as the location here of the Federal Reserve Bank which serves the entire Southwest.

Decision to make the move took place on June 24, leaving only the job of ironing out of details attendant to such a major change in the fundamental policies of both corporations.

Reuben H. Fleet, president of Consolidated, and A. M. Hall, president of Hall-Aluminum, first came here on the invitation of the chamber during an inspection trip in mid-May. Ten days later these two, with E. N. Gott, vice-president of Consolidated, made another trip to Dallas. Fleet and Gott made a third trip, and Hall came by himself on the fourth and decisive trip.

President Hall will make his home in Dallas.

Critz and Clyde Wallis, manager of the chamber's industrial department, worked with a special committee set up by the chamber's directorate especially for this occasion. R. L. Thornton was chairman, and the members were Nathan Adams, C. F. O'Donnell, Z. E. Marvin Sr., Fred Florence and Henry S. Miller.

Dallas Mayor Woodall Rodgers, City Manager James Aston and the City Council pledged every possible co-operation on the part of the city in working out water and airport facilities.

#### Little Theater Director Named.

TYLER, Texas, July 4.—Earl Andrews was elected to the board of directors of the Tyler Little Theater to fill a vacancy created by the resignation of R. W. Hona. Plans for the next season of the group were discussed.

#### HOW TO GAIN \$200

Draughon's Summer School, South-wide placement service, will mean a good position and attractive income three months sooner—\$200 extra earnings. Ask for Catalog M.

**Draughon's**  
BUSINESS COLLEGE  
Dallas Abilene Wichita Falls Lubbock

# EARLY SALE



\$3.74

*French Room*  
FOOTWEAR



# \$2.94 and 3.74

Thrilling shoe news... it's French Room Sale Timel Now you can choose two pairs for barely more than the usual price of one pair. White shoes. Dark summer shoes. Whites with color accents. You can be fitted in many smart new styles!



\$2.94



\$2.94

# ANDLER'S

1714 ELM ST.

we  
nov  
Mil  
Gr  
anc  
nov  
Gr  
anc  
8.9  
D  
St  
P  
T  
A co  
HO  
Ne  
5  
Pou  
TENN  
HAN  
Hunt  
BAC  
No. 7  
BEEF  
MORI  
14  
Whol  
MORI  
IOWA  
OLD-J  
BOLO  
Lb  
Fand  
Colo  
Colo  
C  
HON  
Mars  
Topp  
Each  
Danis  
POT,  
FRUI