

EFFECTIVE APRIL 27, 1952

# AMERICAN AIRLINES

AMERICAN AIRLINES, Inc.  
AMERICAN AIRLINES DE MEXICO, S. A.

COMPLETE SYSTEM TIMETABLE

PRINTED IN U. S. A.

For Reservations  
Travel Agents

See your  
American Airlines office

THE CALVERT-HATCH CO., CLEVELAND 15, OHIO

AMERICAN AIRLINES, Inc.  
100 PARK AVENUE  
NEW YORK 17, N. Y.

Mr. Amon G. Carter  
Fort Worth Star-Telegram,  
400 West 7th St.,  
Fort Worth, Texas

POSTMASTER: If undeliverable for any reason,  
notify sender, stating reason, on form #3547,  
postage for which is guaranteed.

SEC. 34.66 P. L. & R.  
U. S. POSTAGE  
PAID  
CLEVELAND, OHIO  
Permit No. 2139

EFFECTIVE APRIL 27, 1952

# AMERICAN AIRLINES

AMERICAN AIRLINES, Inc.  
AMERICAN AIRLINES DE MEXICO, S. A.

COMPLETE SYSTEM TIMETABLE



AMERICA'S LEADING AIRLINE

# AMERICAN AIRLINES System Map



## AMERICAN AIRLINES, Inc.

General Offices—100 Park Avenue, New York 17, N. Y. Cable Address—“AMAIR”  
 C. R. Smith, President R. E. S. Deichler, Vice-President Sales  
 C. R. Speers, Asst. Vice-President General Sales Manager

## AMERICAN AIRLINES DE MEXICO, S. A.

General Offices—Avenida Ejido No. 7, Mexico, D. F. Cable Address—“AMAIR”  
 C. R. Smith, President  
 G. C. Van Nostrand, Vice-President and General Manager

September 30, 1951

©G. D. Co., Inc.

COPYRIGHT, 1952, BY AMERICAN AIRLINES, INC.

# CONDENSED SCHEDULES

See Page Numbers Indicated For Complete Schedules



ROUTE OF THE FLAGSHIPS

ALL TIMES SHOWN ARE STANDARD TIMES—ADD 1 HOUR FOR DAYLIGHT TIME

AMERICAN AIRLINES

## DALLAS to:

**BOSTON**—  
See Boston to Dallas  
**CHICAGO**—  
See Chicago to Dallas  
**DETROIT**—  
See Detroit to Dallas

### EL PASO— Pages 5, 6, 7, 8, 9, 10

One Way \$35.15			
Lv	Ar	Lv	Ar
Dallas	El Paso	El Paso	Dallas
5:30AM	6:55AM	3:20AM	6:35AM
9:30AM	10:55AM	8:25AM	12:43PM
1:25PM	2:50PM	12:40PM	3:55PM
1:30PM	2:55PM	12:45PM	4:00PM
6:35PM	9:11PM	3:40PM	7:58PM
9:25PM	10:50PM	6:30PM	9:45PM
		11:10PM	2:25AM

### LOS ANGELES— Pages 5, 6, 7, 8, 9, 10

One Way \$77.30			
Lv	Ar	Lv	Ar
Dallas	Los Angeles	Los Angeles	Dallas
5:20AM	8:25AM	12:20AM	7:05AM
5:30AM	11:30AM	9:15AM	4:00PM
9:30AM	1:20PM	2:15PM	9:45PM
1:25PM	5:10PM	6:10PM	12:55AM
6:05PM	9:10PM	10:55PM	6:31AM
9:30PM	12:35AM		

### MEMPHIS— Pages 5, 6, 7, 8, 9, 10

One Way \$28.65			
Lv	Ar	Lv	Ar
Dallas	Memphis	Memphis	Dallas
3:00AM	4:45AM	12:15AM	2:54AM
7:45AM	9:30AM	2:50AM	4:50AM
9:10AM	12:00 Noon	9:35AM	12:40PM
1:55PM	4:20PM	2:00PM	5:05PM
4:35PM	6:20PM	3:25PM	5:25PM
8:10PM	11:00PM	6:10PM	8:49PM
		7:00PM	9:00PM

### MEXICO CITY— Page 11

One Way \$57.70 — Round Trip \$106.30			
Lv	Ar	Lv	Ar
Dallas	Mexico City	Mexico City	Dallas
3:55AM	7:55AM	8:10AM	1:20PM
1:45PM	5:45PM	9:55AM	3:50PM
3:35PM	7:35PM	9:15PM	2:25AM
6:00PM	11:40PM	10:45PM	3:55AM

### NEW YORK— Pages 5, 6, 7, 8, 9, 10

One Way \$89.00			
Lv	Ar	Lv	Ar
Dallas	New York	New York	Dallas
1:25AM	8:20AM	7:15AM	12:55PM
1:55AM	8:50AM	12:15PM	5:15PM
2:55AM	9:50AM	1:00PM	7:00PM
9:25AM	4:55PM	7:30PM	1:10AM
1:50PM	8:50PM	9:30PM	3:10AM
4:30PM	10:40PM	9:45PM	4:50AM
6:55PM	1:50AM	10:55PM	4:35AM

### ST. LOUIS— Page 11

One Way \$40.75			
Lv	Ar	Lv	Ar
Dallas	St. Louis	St. Louis	Dallas
7:05AM	10:19AM	10:15AM	2:48PM
10:25AM	2:14PM	12:20PM	4:53PM
1:00PM	4:49PM	2:45PM	5:15PM
3:00PM	6:49PM	4:50PM	8:58PM
5:00PM	9:36PM	6:15PM	10:23PM
		7:50PM	12:48AM

### SAN FRANCISCO— See San Francisco to Dallas

### WASHINGTON— Pages 5, 6, 7, 8, 9, 10

One Way \$78.10			
Lv	Ar	Lv	Ar
Dallas	Washington	Washington	Dallas
1:25AM	6:50AM	12:35AM	4:35AM
1:55AM	7:20AM	8:55AM	12:55PM
2:55AM	8:20AM	12:35PM	5:25PM
7:45AM	3:20PM	3:35PM	9:00PM
1:50PM	7:15PM	9:10PM	1:10AM
4:35PM	10:45PM	11:10PM	3:10AM
6:55PM	12:20AM	11:59PM	4:50AM

## DETROIT to:

**BOSTON**—See Boston to Detroit  
**BUFFALO**—See Buffalo to Detroit  
**CHICAGO**—  
See Non - Stop Service, Page 13

### DALLAS— Pages 11, 12, 13, 14, 15

One Way \$67.55			
Lv	Ar	Lv	Ar
Detroit	Dallas	Dallas	Detroit
8:30AM	1:00PM	9:25AM	3:25PM
9:30AM	4:53PM	10:25AM	7:25PM
2:30PM	7:00PM	1:00PM	9:25PM
3:30PM	10:23PM	4:25PM	11:25PM

### LOS ANGELES— Pages 5, 6, 7, 8, 9, 10

One Way \$130.00			
Lv	Ar	Lv	Ar
Detroit	Los Angeles	Los Angeles	Detroit
9:30AM	3:25PM	7:15AM	6:20PM
9:30AM	3:55PM	8:00AM	7:25PM
11:30AM	5:20PM	9:00AM	9:25PM
12:35PM	6:55PM	11:30AM	11:25PM
3:30PM	9:55PM	6:00PM	8:55AM
4:30PM	10:55PM	10:30PM	10:25AM
9:55PM	3:50AM	10:59PM	10:25AM

### MEXICO CITY— Pages 11, 12, 13, 14, 15

One Way \$123.60 — Round Trip \$230.00			
Lv	Ar	Lv	Ar
Detroit	Mexico City	Mexico City	Detroit
8:30AM	5:45PM	9:55AM	11:25PM
9:30AM	7:35PM	10:45PM	10:25AM

### NEW YORK— See Non - Stop Service, Page 15

### ROCHESTER— Pages 12, 13, 14, 15

One Way \$18.15			
Lv	Ar	Lv	Ar
Detroit	Rochester	Rochester	Detroit
9:10AM	11:57AM	8:47AM	11:10AM
11:40AM	1:37PM	9:50AM	12:19PM
2:40PM	4:37PM	1:05PM	3:15PM
4:40PM	6:37PM	3:05PM	5:15PM
5:40PM	7:37PM	4:28PM	7:15PM
7:40PM	9:37PM	7:05PM	9:15PM
		8:06PM	10:45PM

### ST. LOUIS— Pages 11, 12, 13, 14, 15

One Way \$27.80			
Lv	Ar	Lv	Ar
Detroit	St. Louis	St. Louis	Detroit
7:30AM	9:57AM	8:15AM	12:25PM
9:30AM	12:04PM	11:50AM	5:25PM
2:30PM	4:34PM	2:30PM	7:25PM
3:30PM	5:59PM	5:05PM	9:25PM
4:30PM	7:34PM	7:05PM	11:25PM
5:30PM	9:36PM	9:50PM	1:50AM

### SYRACUSE— Pages 12, 13, 14, 15

One Way \$22.55			
Lv	Ar	Lv	Ar
Detroit	Syracuse	Syracuse	Detroit
9:10AM	12:37PM	8:01AM	11:10AM
11:40AM	2:17PM	9:06AM	12:19PM
2:40PM	5:17PM	12:22PM	3:15PM
4:40PM	7:17PM	2:22PM	5:15PM
5:40PM	8:17PM	3:44PM	7:15PM
7:40PM	10:17PM	6:22PM	9:15PM
		8:17PM	10:45PM

## LOS ANGELES to:

**BOSTON**—See Boston to Los Angeles  
**BUFFALO**—See Buffalo to Los Angeles

### CHICAGO— Pages 5, 6, 7, 8, 9, 10

One Way \$114.75			
Lv	Ar	Lv	Ar
Los Angeles	Chicago	Chicago	Los Angeles
7:15AM	3:45PM	10:15AM	3:25PM
8:00AM	4:30PM	10:45AM	3:55PM
9:00AM	5:30PM	12:10PM	5:20PM
11:30AM	8:00PM	1:45PM	6:55PM
6:00PM	2:30AM	4:45PM	9:55PM
10:00PM	6:30AM	5:45PM	10:55PM
10:30PM	7:00AM	10:40PM	3:50AM
10:59PM	7:29AM	2:05AM	7:15AM

## LOS ANGELES to:

**DALLAS**—  
See Dallas to Los Angeles  
**DETROIT**—  
See Detroit to Los Angeles

### EL PASO— Pages 5, 6, 7, 8, 9, 10

One Way \$46.95			
Lv	Ar	Lv	Ar
Los Angeles	El Paso	El Paso	Los Angeles
7:50AM	12:20PM	7:20AM	11:30AM
2:15PM	6:00PM	11:25AM	1:20PM
4:50PM	10:45PM	3:15PM	5:10PM
11:15PM	3:00AM	6:15PM	8:10PM
		11:15PM	2:05AM

### MEXICO CITY— Page 11

One Way \$98.00 — Round Trip \$176.40			
Lv	Ar	Lv	Ar
Los Angeles	Mexico City	Mexico City	Los Angeles
2:15PM	12:20AM	10:40AM	5:10PM

### NEW YORK— See Condensed Schedules, Page 8

### OKLAHOMA CITY— Pages 5, 6, 7, 8, 9, 10

One Way \$78.00			
Lv	Ar	Lv	Ar
Los Angeles	Oklahoma City	Oklahoma City	Los Angeles
7:10AM	3:25PM	8:00AM	1:20PM
9:15AM	5:59PM	3:50PM	9:10PM
2:15PM	11:14PM	5:05PM	10:25PM
10:55PM	7:59AM	7:55PM	12:35AM

### PHOENIX— Pages 5, 6, 7, 8, 9, 10

One Way \$23.75			
Lv	Ar	Lv	Ar
Los Angeles	Phoenix	Phoenix	Los Angeles
7:10AM	9:45AM	10:55AM	11:30AM
7:50AM	10:25AM	3:25PM	5:05PM
9:10AM	12:33PM	6:30PM	7:10PM
4:50PM	8:10PM	9:00PM	10:25PM
7:05PM	10:20PM	10:05PM	11:30PM

### TUCSON— Pages 5, 6, 7, 8, 9, 10

One Way \$30.50			
Lv	Ar	Lv	Ar
Los Angeles	Tucson	Tucson	Los Angeles
6:55AM	10:35AM	9:00AM	11:30AM
7:10AM	10:40AM	2:30PM	5:05PM
9:10AM	1:24PM	5:25PM	7:10PM
4:50PM	9:10PM	7:55PM	10:25PM
7:05PM	11:15PM	9:00PM	11:30PM

### WASHINGTON— See Washington to Los Angeles

## NEW YORK to:

### BOSTON— Pages 16, 17

One Way \$12.15			
Lv	Ar	Lv	Ar
New York	Boston	Boston	New York
6:15AM	7:18AM	6:00AM	7:09AM
7:15AM	8:18AM	7:00AM	8:09AM
7:45AM	8:48AM	8:00AM	9:09AM
8:15AM	9:18AM	8:25AM	9:34AM
9:15AM	10:18AM	9:00AM	10:09AM
9:45AM	10:48AM	10:00AM	11:09AM
10:15AM	11:18AM	11:00AM	12:09PM
11:15AM	12:18PM	12:00 Noon	1:09PM
12:15PM	1:18PM	12:25PM	1:34PM
1:15PM	2:18PM	1:00PM	2:09PM
2:15PM	3:18PM	1:25PM	2:34PM
3:15PM	4:18PM	2:00PM	3:09PM
4:15PM	5:18PM	3:00PM	4:09PM
5:15PM	6:18PM	3:25PM	4:34PM
6:15PM	7:18PM	4:00PM	5:09PM
7:15PM	8:18PM	5:00PM	6:09PM
7:30PM	8:58PM	6:00PM	7:09PM
8:15PM	9:18PM	6:15PM	7:24PM
9:15PM	10:18PM	7:00PM	8:09PM
10:15PM	11:18PM	8:00PM	9:09PM
11:15PM	12:18AM	9:00PM	10:09PM
1:45AM	2:48AM	9:25PM	10:34PM
		10:00PM	11:09PM
		10:59PM	12:08AM

5% DISCOUNT ON ALL ROUND TRIP FARES, EXCEPT FOR AIRTOURIST SERVICES.

Ⓢ—Saturday only.  
Ⓜ—See page 23 for low, 15-Day Fiesta Fares to Mexico.  
Ⓢ—Sunday only.  
Ⓜ—Daily, except Saturday and Sunday.  
Ⓢ—Daily, except Sunday. Ⓜ—Daily, except Saturday.

z—Arrives or leaves Idlewild Airport, N.Y.  
Ⓜ—Via American's DC-6 Airtourist Service—See Page 23 for low fares that apply to this flight.  
□—Portion of itinerary via DC-6 Airtourist Service—Consult American Airlines for low fares that apply.

Fares quoted above apply via most direct route from airport to airport and are subject to Federal Transportation Tax of 15%. Schedules and fares are subject to correction and change without notice.



AMERICAN AIRLINES

# CONDENSED SCHEDULES

See Page Numbers Indicated For Complete Schedules

ROUTE OF THE FLAGSHIPS

ALL TIMES SHOWN ARE STANDARD TIMES—ADD 1 HOUR FOR DAYLIGHT TIME

AMERICAN AIRLINES

## BOSTON to:

**BUFFALO—**

Pages 12, 13, 14, 15

One Way \$26.00			
Lv	Ar	Lv	Ar
Boston	Buffalo	Buffalo	Boston
7:20AM	9:25AM	6:25AM	10:02AM
11:25AM	2:35PM	12:10PM	1:59PM
12:55PM	4:58PM	2:10PM	4:59PM
4:20PM	6:34PM	8:15PM	10:00PM
6:55PM	9:05PM		

**CHICAGO—**

See Chicago to Boston

**CINCINNATI—**

Pages 16, 17, 18

One Way \$46.45			
Lv	Ar	Lv	Ar
Boston	Cincinnati	Cincinnati	Boston
8:25AM	12:45PM	8:35AM	1:18PM
10:00AM	5:16PM	10:05AM	2:18PM
1:25PM	6:28PM	11:20AM	6:18PM
3:25PM	8:10PM	5:30PM	9:18PM
6:15PM	11:28PM	6:30PM	12:18AM
		7:05PM	2:48AM
		9:30PM	2:48AM

**DALLAS—**

Pages 5, 6, 7, 8, 9, 10

One Way \$98.10			
Lv	Ar	Lv	Ar
Boston	Dallas	Dallas	Boston
9:00AM	5:25PM	1:25AM	10:18AM
10:00AM	6:15PM	1:55AM	10:48AM
11:00AM	7:00PM	2:55AM	12:18PM
12:25PM	9:00PM	9:25AM	7:18PM
6:00PM	1:10AM	1:50PM	11:18PM
8:00PM	3:10AM	4:30PM	12:18AM
9:00PM	4:35AM		

**DETROIT—**

Pages 12, 13, 14, 15

One Way \$39.70			
Lv	Ar	Lv	Ar
Boston	Detroit	Detroit	Boston
7:20AM	11:10AM	2:25AM	7:18AM
11:25AM	4:15PM	10:40AM	1:59PM
1:00PM	4:55PM	12:40PM	4:59PM
4:20PM	8:15PM	4:00PM	8:18PM
5:00PM	9:25PM	6:40PM	10:00PM
6:55PM	10:45PM	9:00PM	2:48AM

**LOS ANGELES—**

Pages 5, 6, 7, 8, 9, 10

One Way \$167.55			
Lv	Ar	Lv	Ar
Boston	Los Angeles	Los Angeles	Boston
6:00AM	3:25PM	7:15AM	10:00PM
7:00AM	5:20PM	8:00AM	11:18PM
7:20AM	7:10PM	9:00AM	12:18AM
9:00AM	6:55PM	9:15AM	12:18AM
12:25PM	9:55PM	11:30AM	2:48AM
1:00PM	10:55PM	6:00PM	9:18AM
5:00PM	3:50AM	6:10PM	10:18AM
9:00PM	8:25AM	10:00PM	1:18PM
9:25PM	7:15AM	10:59PM	2:18PM

**MEXICO CITY—**

Pages 11, 16, 17

One Way \$153.50 — Round Trip \$286.80			
Lv	Ar	Lv	Ar
Boston	Mexico City	Mexico City	Boston
10:00AM	11:40PM	8:10AM	11:18PM
8:00PM	7:55AM	9:55AM	12:18AM
		9:15PM	12:18PM

**NEW YORK—**

See New York to Boston

**SAN FRANCISCO—**

Pages 5, 6, 7, 8, 9, 10

One Way \$167.55			
Lv	Ar	Lv	Ar
Boston	San Francisco	San Francisco	Boston
7:00AM	8:15PM	7:20AM	12:18AM
9:00AM	9:48PM	5:40PM	11:18AM
10:00AM	11:05PM	6:00PM	1:18PM
12:25PM	12:54AM	8:40PM	2:18PM
6:00PM	8:05AM	11:05PM	5:18PM
9:00PM	12:30PM		
9:25PM	12:30PM		

## BOSTON to:

**WASHINGTON—**

Pages 16, 17

One Way \$25.55			
Lv	Ar	Lv	Ar
Boston	Washington	Washington	Boston
6:00AM	9:14AM	5:50AM	8:48AM
7:00AM	9:49AM	6:15AM	9:18AM
8:00AM	10:45AM	7:15AM	10:18AM
9:00AM	11:49AM	8:15AM	10:41AM
10:00AM	12:49PM	9:45AM	12:18PM
11:00AM	1:49PM	10:45AM	1:18PM
11:20AM	1:30PM	11:45AM	2:18PM
12:00 Noon	3:13PM	1:45PM	4:18PM
1:00PM	3:45PM	3:00PM	5:26PM
2:00PM	4:49PM	3:15PM	6:18PM
3:00PM	5:49PM	4:45PM	7:18PM
4:00PM	6:38PM	5:00PM	7:02PM
5:00PM	8:14PM	6:00PM	8:58PM
6:00PM	8:45PM	6:45PM	9:18PM
6:15PM	9:04PM	6:55PM	10:18PM
7:00PM	10:14PM	7:45PM	11:38PM
8:00PM	10:45PM	11:15PM	2:48AM
9:00PM	12:10AM		

## BUFFALO to:

**BOSTON—**

See Boston to Buffalo

**CHICAGO—**

Pages 12, 13, 14, 15

One Way \$29.95			
Lv	Ar	Lv	Ar
Buffalo	Chicago	Chicago	Buffalo
6:50AM	8:47AM	6:45AM	10:48AM
9:50AM	11:40AM	8:15AM	11:57AM
10:32AM	12:52PM	9:15AM	12:57PM
1:50PM	3:47PM	10:15AM	1:57PM
2:50PM	4:47PM	12:15PM	3:57PM
3:50PM	5:47PM	1:00PM	5:57PM
5:50PM	7:47PM	3:15PM	6:57PM
6:50PM	8:47PM	4:15PM	7:50PM
9:20PM	11:17PM	5:15PM	8:57PM
		9:15PM	12:57AM

**DETROIT—**

Pages 12, 13, 14, 15

One Way \$14.70			
Lv	Ar	Lv	Ar
Buffalo	Detroit	Detroit	Buffalo
6:50AM	8:15AM	9:10AM	10:48AM
9:50AM	11:10AM	10:40AM	11:57AM
10:32AM	12:19PM	11:40AM	12:57PM
1:50PM	3:15PM	12:40PM	1:57PM
2:50PM	4:15PM	2:40PM	3:57PM
3:50PM	5:15PM	4:40PM	5:57PM
4:50PM	6:15PM	5:40PM	6:57PM
5:50PM	7:15PM	6:40PM	7:50PM
6:50PM	8:15PM	7:40PM	8:57PM
7:50PM	9:15PM	8:40PM	10:57PM
9:20PM	10:45PM	11:40PM	12:57AM

**LOS ANGELES—**

Pages 5, 6, 7, 8, 9, 10

One Way \$143.70			
Lv	Ar	Lv	Ar
Buffalo	Los Angeles	Los Angeles	Buffalo
6:50AM	3:25PM	7:15AM	7:50PM
6:50AM	3:55PM	8:00AM	8:57PM
9:50AM	5:20PM	11:30AM	12:57AM
10:32AM	6:55PM	6:00PM	10:48AM
1:50PM	9:55PM	10:30PM	11:57AM
2:50PM	10:55PM	10:59PM	11:57AM
6:50PM	3:50AM		
9:20PM	7:15AM		

**MEXICO CITY—**

Pages 11, 12, 13, 14, 15

One Way \$135.40 — Round Trip \$252.40			
Lv	Ar	Lv	Ar
Buffalo	Mexico City	Mexico City	Buffalo
6:50AM	5:45PM	9:55AM	12:57AM
11:30AM	11:40PM	9:15PM	3:09PM
4:35PM	7:55AM		

**NEW YORK—**

See Non - Stop Service, Page 15

**SAN FRANCISCO—**

Pages 5, 6, 7, 8, 9, 10

One Way \$143.70			
Lv	Ar	Lv	Ar
Buffalo	San Francisco	San Francisco	Buffalo
6:50AM	6:45PM	7:20AM	12:57AM
11:30AM	11:05PM	6:00PM	11:57AM
9:20PM	12:30PM	11:05PM	3:09PM

## BUFFALO to:

**TORONTO—**

Pages 12, 13, 14, 15

One Way \$5.25			
Lv	Ar	Lv	Ar
Buffalo	Toronto	Toronto	Buffalo
8:35AM	9:09AM	8:40AM	9:12AM
12:35PM	1:09PM	10:40AM	11:12AM
3:35PM	4:09PM	3:15PM	3:47PM

## CHICAGO to:

**BOSTON—**

Pages 12, 13, 14, 15

One Way \$53.80			
Lv	Ar	Lv	Ar
Chicago	Boston	Boston	Chicago
3:00AM	9:18AM	6:00AM	9:45AM
7:00AM	1:18PM	7:00AM	11:45AM
8:00AM	2:18PM	7:20AM	11:40AM
8:15AM	1:59PM	8:25AM	12:15PM
10:00AM	4:18PM	9:00AM	1:15PM
11:00AM	5:18PM	10:00AM	2:15PM
12:00 Noon	6:18PM	11:00AM	3:15PM
1:00PM	7:18PM	12:25PM	4:15PM
2:00PM	8:18PM	1:00PM	5:15PM
3:00PM	9:18PM	2:00PM	6:15PM
4:00PM	10:18PM	3:25PM	7:15PM
4:15PM	10:00PM	4:00PM	8:15PM
5:00PM	11:18PM	4:20PM	8:47PM
6:00PM	12:18AM	5:00PM	10:05PM
9:00PM	2:48AM	6:00PM	10:15PM
11:45PM	7:18AM	9:25PM	1:35AM

**BUFFALO—**

See Buffalo to Chicago

**CINCINNATI—**

Page 18

One Way \$17.60			
Lv	Ar	Lv	Ar
Chicago	Cincinnati	Cincinnati	Chicago
6:50AM	9:40AM	8:30AM	9:22AM
8:15AM	10:57AM	10:40AM	11:32AM
1:15PM	3:57PM	1:20PM	2:12PM
4:00PM	6:42PM	5:40PM	6:32PM
6:30PM	9:12PM	8:40PM	9:37PM

**DALLAS — One Way \$56.30**

Page 11

One Way \$56.30			
Lv	Ar	Lv	Ar
Chicago	Dallas	Dallas	Chicago
9:40AM	1:00PM	4:25AM	7:35AM
10:40AM	4:53PM	9:25AM	12:35PM
11:30AM	2:50PM	10:25AM	4:18PM
3:40PM	7:00PM	1:00PM	6:25PM
4:35PM	10:23PM	4:25PM	7:35PM
6:10PM	12:48AM	5:00PM	11:10PM

**DETROIT—See Non - Stop Service, Page 15**

**LOS ANGELES—**

See Los Angeles to Chicago

**MEXICO CITY—**

Page 11

One Way \$113.00 — Round Trip \$211.40			
Lv	Ar	Lv	Ar
Chicago	Mexico City	Mexico City	Chicago
9:40AM	5:45PM	9:55AM	7:35PM
11:30AM	7:35PM	10:45PM	7:35AM

**NEW YORK—**

See Non - Stop Service, Page 15

**ST. LOUIS — One Way \$16.55**

Page 11

One Way \$16.55			
Lv	Ar	Lv	Ar
Chicago	St. Louis	St. Louis	Chicago
8:10AM	9:57AM	8:15AM	9:57AM
10:40AM	12:04PM	11:50AM	1:10PM





AMERICAN AIRLINES

# CONDENSED SCHEDULES

See Page Numbers Indicated For Complete Schedules

ROUTE OF THE FLAGSHIPS

ALL TIMES SHOWN ARE STANDARD TIMES—ADD 1 HOUR FOR DAYLIGHT TIME

AMERICAN AIRLINES

## NEW YORK to:

**BUFFALO**—See Non - Stop Service, Page 13

**CHICAGO**—See Non - Stop Service, Page 13

**CINCINNATI**—One Way \$37.35 Page 18

Lv		Ar	
New York	Cincinnati	Cincinnati	New York
ⓧ5.20AM	10.16AM	ⓧ7.35AM	11.25AM
10.05AM	12.45PM	ⓧ10.05AM	12.30PM
12.25PM	5.16PM	11.20AM	4.10PM
ⓧ3.10PM	6.28PM	5.30PM	7.55PM
ⓧ4.55PM	8.10PM	6.30PM	ⓧ9.20PM
ⓧ8.10PM	11.28PM	7.05PM	10.55PM
		ⓧ9.30PM	12.17AM

**DALLAS**—See Dallas to New York

**DETROIT**—See Non - Stop Service, Page 13

**KNOXVILLE**—One Way \$42.10 Pages 5, 6, 7, 8, 9, 10

Lv		Ar	
New York	Knoxville	Knoxville	New York
6.40AM	12.06PM	8.50AM	12.50PM
12.30PM	4.17PM	ⓧ9.05AM	1.55PM
5.55PM	10.28PM	1.30PM	4.50PM
ⓧ6.55PM	11.13PM	3.35PM	9.00PM
		7.55PM	11.38PM

**LOS ANGELES**—See Condensed Schedules, Page 5

**LOUISVILLE**—One Way \$42.90 Page 18

Lv		Ar	
New York	Louisville	Louisville	New York
10.05AM	12.55PM	8.05AM	12.30PM
ⓧ3.10PM	6.17PM	3.30PM	7.55PM
ⓧ4.55PM	8.27PM	4.40PM	ⓧ9.20PM

**MEMPHIS**—One Way \$63.85 Pages 5, 6, 7, 8, 9, 10

Lv		Ar	
New York	Memphis	Memphis	New York
6.40AM	1.44PM	5.10AM	12.50PM
10.30AM	3.00PM	9.55AM	4.50PM
12.30PM	5.54PM	12.15PM	9.00PM
1.55PM	6.35PM	2.20PM	ⓧ9.20PM
5.55PM	12.04AM	4.35PM	ⓧ11.38PM
9.45PM	2.24AM	6.45PM	12.20AM

**MEXICO CITY**—One Way \$144.40 — Round Trip \$269.50ⓧ Page 11

Lv		Ar	
New York	Mexico City	Mexico City	New York
7.15AM	5.45PM	8.10AM	8.50PM
12.15PM	11.40PM	9.55AM	10.40PM
9.30PM	7.55AM	9.15PM	9.50AM

**NASHVILLE**—One Way \$51.50 Pages 5, 6, 7, 8, 9, 10

Lv		Ar	
New York	Nashville	Nashville	New York
9.30AM	12.45PM	6.35AM	12.50PM
12.30PM	4.26PM	ⓧ7.00AM	12.30PM
1.55PM	5.10PM	11.20AM	4.50PM
ⓧ3.10PM	7.26PM	3.35PM	ⓧ9.20PM
5.55PM	10.36PM	5.50PM	ⓧ11.38PM
7.55PM	11.35PM	7.25PM	12.50AM

**PROVIDENCE**—One Way \$9.90 Pages 16, 17

Lv		Ar	
New York	Providence	Providence	New York
ⓧ6.10AM	7.02AM	ⓧ6.40AM	7.35AM
ⓧ8.10AM	9.02AM	ⓧ7.40AM	8.35AM
10.10AM	11.42AM	8.40AM	10.14AM
11.50AM	1.12PM	11.05AM	12.33PM
1.10PM	2.02PM	1.40PM	2.35PM
ⓧ3.10PM	4.02PM	ⓧ4.02PM	5.35PM
5.10PM	6.02PM	6.40PM	7.35PM
8.10PM	9.02PM	9.40PM	10.35PM
10.10PM	11.02PM		

**RICHMOND**—One Way \$20.25 Pages 16, 17

Lv		Ar	
New York	Richmond	Richmond	New York
6.40AM	8.54AM	ⓧ8.55AM	10.55AM
10.55AM	1.09PM	ⓧ11.55AM	1.55PM
5.55PM	8.09PM	4.55PM	6.55PM
ⓧ7.45PM	9.55PM	6.25PM	9.00PM

## NEW YORK to:

**ROCHESTER**—One Way \$17.80 Pages 12, 13, 14, 15

Lv		Ar	
New York	Rochester	Rochester	New York
ⓧ6.00AM	8.35AM	6.47AM	8.10AM
ⓧ6.30AM	8.35AM	ⓧ10.47AM	ⓧ12.40PM
ⓧ7.50AM	9.56AM	11.47AM	ⓧ1.40PM
ⓧ8.50AM	10.56AM	12.47PM	ⓧ2.40PM
ⓧ10.50AM	12.56PM	1.47PM	ⓧ3.40PM
ⓧ12.50PM	2.56PM	3.47PM	ⓧ4.50PM
ⓧ1.45PM	3.23PM	4.47PM	ⓧ5.10PM
ⓧ2.50PM	4.56PM	6.47PM	ⓧ7.40PM
ⓧ4.50PM	6.56PM	7.47PM	ⓧ8.40PM
ⓧ5.50PM	7.56PM	9.47PM	ⓧ11.40PM
ⓧ7.50PM	9.56PM		
ⓧ8.50PM	10.56PM		

**SAN FRANCISCO**—See San Francisco to New York

**SYRACUSE**—See Non - Stop Service, Page 13

**TORONTO**—One Way \$23.65 U. S. or Can. Pages 12, 13, 14, 15

Lv		Ar	
New York	Toronto	Toronto	New York
ⓧ6.40AM	9.09AM	ⓧ8.40AM	ⓧ10.53AM
ⓧ10.40AM	1.09PM	10.40AM	ⓧ12.53PM
ⓧ1.40PM	4.09PM	3.15PM	ⓧ5.28PM
ⓧ6.50PM	8.53PM	5.15PM	ⓧ8.58PM

**WASHINGTON**—One Way \$14.40 Pages 16, 17

Lv		Ar	
New York	Washington	Washington	New York
6.40AM	7.59AM	ⓧ6.15AM	7.25AM
7.15AM	8.30AM	6.45AM	7.50AM
ⓧ7.55AM	9.14AM	7.15AM	8.20AM
ⓧ8.30AM	9.49AM	7.45AM	8.50AM
9.30AM	10.45AM	8.45AM	9.50AM
10.30AM	11.49AM	ⓧ9.45AM	10.55AM
10.55AM	12.14PM	ⓧ10.15AM	11.25AM
11.30AM	12.49PM	10.45AM	11.55AM
ⓧ11.55AM	1.14PM	11.45AM	12.55PM
12.30PM	1.49PM	ⓧ12.45PM	1.55PM
12.50PM	2.05PM	1.15PM	2.25PM
1.55PM	3.10PM	ⓧ1.45PM	2.55PM
2.30PM	3.45PM	3.00PM	4.10PM
3.50PM	4.49PM	3.45PM	4.50PM
3.55PM	5.14PM	4.15PM	5.25PM
4.30PM	5.49PM	4.45PM	5.50PM
5.30PM	6.49PM	5.45PM	6.55PM
5.55PM	7.14PM	ⓧ6.00PM	ⓧ7.10PM
6.30PM	7.49PM	ⓧ6.45PM	7.55PM
ⓧ6.55PM	8.14PM	6.55PM	8.05PM
7.30PM	8.45PM	7.45PM	8.50PM
ⓧ7.45PM	9.04PM	9.45PM	10.55PM
ⓧ8.55PM	10.14PM	11.15PM	12.20AM
9.30PM	10.45PM	12.45AM	1.50AM
10.55PM	12.10AM		

## SAN FRANCISCO to:

**DALLAS**—One Way \$97.90 Pages 5, 6, 7, 8, 9, 10

Lv		Ar	
San Francisco	Dallas	Dallas	San Francisco
7.20AM	3.55PM	9.30AM	2.35PM
1.15PM	9.45PM	1.25PM	6.55PM
5.40PM	1.30AM	6.00PM	11.05PM
8.50PM	6.35AM		

**MEXICO CITY**—One Way \$119.10 — Round Trip \$216.40ⓧ Page 11

Lv		Ar	
San Francisco	Mexico City	Mexico City	San Francisco
1.15PM	12.20AM	10.40AM	8.05PM

**NEW YORK**—One Way \$158.85 Pages 5, 6, 7, 8, 9, 10

Lv		Ar	
San Francisco	New York	New York	San Francisco
7.20AM	10.40PM	7.15AM	5.55PM
ⓧ8.00AM	12.25AM	ⓧ9.00AM	ⓧ8.15PM
5.40PM	8.50AM	11.00AM	ⓧ9.25PM
ⓧ6.00PM	10.55AM	12.15PM	ⓧ11.05PM
ⓧ8.40PM	11.55AM	7.55PM	8.05AM
11.05PM	3.05PM	ⓧ10.55PM	ⓧ12.30PM
		11.20PM	ⓧ11.55AM

## SAN FRANCISCO to:

**OKLAHOMA CITY**—One Way \$97.90 Pages 5, 6, 7, 8, 9, 10

Lv		Ar	
San Francisco	Oklahoma City	Oklahoma City	San Francisco
7.20AM	5.59PM	4.00AM	8.05AM
1.15PM	11.14PM	8.00AM	2.35PM
11.05PM	6.30AM	3.50PM	11.05PM

**TULSA**—One Way \$97.90 Pages 5, 6, 7, 8, 9, 10

Lv		Ar	
San Francisco	Tulsa	Tulsa	San Francisco
7.20AM	6.53PM	2.55AM	8.05AM
1.15PM	12.08AM	7.00AM	2.35PM
11.05PM	7.35AM	2.50PM	11.05PM

**WASHINGTON**—One Way \$149.35 Pages 5, 6, 7, 8, 9, 10

Lv		Ar	
San Francisco	Washington	Washington	San Francisco
7.20AM	10.45PM	8.55AM	5.55PM
5.40PM	7.20AM	12.35PM	11.05PM
11.05PM	1.00PM	10.00PM	8.05AM

## WASHINGTON to:

**BOSTON**—See Boston to Washington Page 18

**CHICAGO**—One Way \$37.80 Page 18

Lv		Ar	
Washington	Chicago	Chicago	Washington
7.30AM	9.10AM	ⓧ7.15AM	10.45AM
11.30AM	1.10PM	11.15AM	2.45PM
2.30PM	4.10PM	3.15PM	6.45PM
ⓧ4.30PM	6.10PM	5.15PM	8.45PM
ⓧ8.00PM	9.40PM	ⓧ9.00PM	12.30AM

**CINCINNATI**—One Way \$26.50 Page 18

Lv		Ar	
Washington	Cincinnati	Cincinnati	Washington
ⓧ7.30AM	10.16AM	ⓧ7.35AM	10.01AM
9.16AM	1.04PM	11.20AM	2.46PM
2.30PM	5.16PM	4.15PM	6.41PM
6.30PM	8.16PM	7.05PM	9.31PM

**DALLAS**—See Dallas to Washington

**KNOXVILLE**—One Way \$28.70 Pages 5, 6, 7, 8, 9, 10

Lv		Ar	
Washington	Knoxville	Knoxville	Washington
8.15AM	12.06PM	8.50AM	10.40AM
2.05PM	4.17PM	ⓧ9.05AM	12.32PM
7.30PM	10.28PM	1.30PM	3.20PM
ⓧ8.30PM	11.13PM	3.35PM	7.02PM
		7.55PM	9.53PM

**LOS ANGELES**—One Way \$149.35 Pages 5, 6, 7, 8, 9, 10

Lv		Ar	
Washington	Los Angeles	Los Angeles	Washington
ⓧ7.30AM	3.25PM	8.00AM	8.45PM
11.30AM	6.55PM	9.15AM	10.45PM
ⓧ2.30PM	9.55PM	ⓧ11.30AM	12.30AM
2.30PM	10.55PM	ⓧ6.10PM	6.50AM
ⓧ8.00PM	3.50AM	ⓧ10.00PM	10.45AM
ⓧ12.35AM	8.25AM		

**MEMPHIS**—One Way \$50.45 Pages 5, 6, 7, 8, 9, 10

Lv		Ar	
Washington	Memphis	Memphis	Washington
8.15AM	1.44PM	5.10AM	10.40AM
12.35PM	3.00PM	9.55AM	3.20PM
2.05PM	5.54PM	12.15PM	7.02PM
3.35PM	6.35PM	4.35PM	9.45PM
7.30PM	12.04AM	6.45PM	10.53PM
11.59PM	2.24AM		

**MEXICO CITY**—One Way \$131.00 — Round Trip \$244.10ⓧ Page 11

Lv		Ar	
Washington	Mexico City	Mexico City	Washington
8.55AM	5.45PM	8.10AM	7.15PM
12.35PM	11.40PM	9.55AM	10.45PM
11.10PM	7.55AM	9.15PM	8.20AM

**NASHVILLE**—One Way \$38.10 Pages 5,

# WESTBOUND TRANSCONTINENTAL

For Complete Schedules Boston to New York See Page 16



AMERICAN AIRLINES

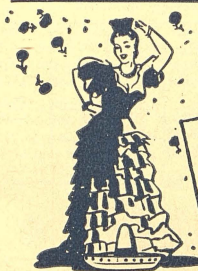
ALL FLIGHTS DAILY Unless Otherwise Indicated		PM	PM	PM	PM	PM	PM	PM	PM	PM	PM	PM	PM	PM	PM	PM	PM	PM	PM	PM	PM			
BOSTON	§ (EST) Lv			c12.25	c1.00	PM 1.25																		
PROVIDENCE	§ " Lv			c11.05	c1.40																			
HARTFORD/SPGFL'D	§ " Lv			c11.50																				
NEW HAVEN	§ " Lv																							
BRIDGEPORT	§ " Lv																							
		771	485	603 Air-Tourist	27	483	579	711	61 Ex Sa	19	565 Ex Sa	379 Ex Sa	769-795	71 Ex Sa	129	407 Ex Sa	115	49	157	11	605 Air-Tourist	753	3	
NEW YORK (La Guardia) §	Lv			2.00	D3.00		D3.10		D400			D5.55			7.00	6.55	7.30	7.55	9.30	9.45	10.55		11.20	
NEW YORK (Idlewild) §	Lv																							
PHILADELPHIA §	Lv																							
BALTIMORE §	Lv																							
WASHINGTON §	Lv																							
SYRACUSE §	Lv	12.22						2.22	D430			7.30	3.44	8.00		8.30	9.10	10.00	11.10	11.59	12.35			
ROCHESTER §	Lv	1.06						3.06					4.28											
BUFFALO §	Ar	1.36						3.36					4.58											
BUFFALO §	Lv	1.50						3.50					D550		7.50									
CLEVELAND §	Lv																							
DETROIT §	Lv	3.30							D5.30				7.30		9.55									
RICHMOND §	Ar												8.09											
LYNCHBURG §	Lv																							
ROANOKE §	Ar																							
MIAMI §	Ar																							
TAMPA §	Lv																							
BRISTOL §	Lv																							
JOHNSON CITY §	Lv																							
KINGSFORD §	Lv																							
KNOXVILLE §	Lv																							
ATLANTA § (EST)	Lv																							
NASHVILLE § (CST)	Ar																							
NASHVILLE §	Lv																							
BIRMINGHAM §	Ar																							
MEMPHIS §	Ar																							
MEMPHIS §	Lv																							
LITTLE ROCK §	Lv																							
TEXARKANA §	Lv																							
MILWAUKEE §	Lv																							
CHICAGO §	Ar	3.47																						
CHICAGO §	Lv																							
PEORIA §	Lv																							
SPRINGFIELD, ILL. §	Lv																							
NEW ORLEANS §	Lv																							
ST. LOUIS §	Ar																							
ST. LOUIS §	Lv																							
SPRINGFIELD, MO. §	Lv																							
JOPLIN §	Lv																							
TULSA §	Lv																							
OKLAHOMA CITY §	Lv																							
HOUSTON §	Lv																							
FT. WORTH §	Lv																							
DALLAS §	Ar																							
DALLAS §	Lv																							
FT. WORTH §	Ar																							
SAN ANTONIO §	Ar																							
SAN ANTONIO §	Lv																							
MONTERREY §	Ar																							
MEXICO CITY §	Ar																							
MEXICO CITY §	Lv																							
MONTERREY §	Lv																							
MIDLAND/ODESSA § (CST)	Lv																							
EL PASO § (MST)	Ar																							
EL PASO §	Lv																							
BISBEE/DOUGLAS §	Lv																							
TUCSON §	Lv																							
PHOENIX § (MST)	Lv																							
SAN DIEGO § (PST)	Ar																							
LOS ANGELES §	Ar																							
OAKLAND §	Ar																							
SAN FRANCISCO § (PST)	Ar																							
HONOLULU § Via PAA (HST)	Ar																							
		PM	PM	AM	AM	AM	PM	PM	PM	PM	PM	AM	PM	PM	PM	PM	AM	AM	AM	AM	PM	PM	PM	PM

ROUTE OF THE FLAGSHIPS

ALL TIMES SHOWN ARE STANDARD TIMES—ADD 1 HOUR FOR DAYLIGHT TIME

AMERICAN AIRLINES

OTHER WESTBOUND TRANSCONTINENTAL FLIGHTS SHOWN ON PRECEDING PAGES



**MEXICO**

## IT'S FIESTA FARE SEASON IN

You Save when you Fly • Save when you Get There

American Airlines Fiesta Fare Season brings you drastically reduced fares — a full 50% off the regular return trip ticket. Plus this, many all-expense tours also have been reduced during this period . . . some as much as 15%. You can go any time the Fiesta Fares apply — from March 15 through May 31. A generous 15 day limit is provided. Ask for details and complete tour literature.



AMERICAN AIRLINES  
 ROUTE OF THE FLAGSHIPS

ALL TIMES SHOWN ARE STANDARD TIMES—ADD 1 HOUR FOR DAYLIGHT TIME

# WESTBOUND TRANSCONTINENTAL

For Complete Schedules Boston to New York See Page 16

ALL FLIGHTS DAILY Unless Otherwise Indicated		AM	AM	AM	PM	AM	AM	315	AM	AM	AM	PM	AM	PM	PM	PM	PM	347	AM	AM	PM	PM	PM		
BOSTON	§ (EST) Lv	c8.00																							
PROVIDENCE	§ " Lv	c7.40		c7.40																					
HARTFORD/SPGFL'D	§ " Lv	c6.50		c6.50																					
NEW HAVEN	§ " Lv																								
BRIDGEPORT	§ " Lv																								
		↑	723	↑153	CAL-AA ▲953	↑7	▲7-917	315	723	↑5	▲65-▲6	705	↑9	NAL-DAL-AA ▲917	DAL-AA ▲901	417	①285	347 AM	①23	▲117	DAL-AA ▲903	▲67-▲27			
NEW YORK (LaGuardia) §44	Lv	9.50		9.35		10.30	10.30	L1055		L1100			L1215					n12.30	1.00	1.55			12.50		
NEW YORK (Idlewild) §	Lv																								
PHILADELPHIA §	Lv					11.25	11.25																		
BALTIMORE §	Lv																								
WASHINGTON §	Lv	L1110				n12.35	n12.35	12.30											2.05		D3.35			2.30	
SYRACUSE §	Lv																								
ROCHESTER §	Lv		9.06							9.06															
BUFFALO §	Lv		9.50							9.50															
BUFFALO §	Ar		10.20							10.20															
BUFFALO §	Lv			L1130						10.32															
CLEVELAND §	Lv			1.00																					
DETROIT §	Lv																								
RICHMOND §	Ar							1.09		L1235															
LYNCHBURG §	Lv							2.20																	
ROANOKE §	Ar							2.45																	
MIAMI §	Lv																								
TAMPA §	Lv																								
BRISTOL §	Lv																								
JOHNSON CITY §	Lv																								
KINGSFORD §	Lv																								
KNOXVILLE §	Lv																								
ATLANTA § (EST)	Lv																								
NASHVILLE § (CST)	Ar	12.45																							
NASHVILLE §	Lv	1.10																							
BIRMINGHAM §	Lv																								
MEMPHIS §	Ar					3.00	3.00																		
MEMPHIS §	Lv					3.25	3.25																		
LITTLE ROCK §	Lv																								
TEXARKANA §	Lv																								
MILWAUKEE §	Lv																								
CHICAGO §	Ar																								
CHICAGO §	Lv									12.52															
PEORIA §	Lv									D1.45															
SPRINGFIELD, ILL. §	Lv									D1.45															
NEW ORLEANS §	Lv																								
ST. LOUIS §	Ar			2.25																					
ST. LOUIS §	Lv			2.45																					
SPRINGFIELD, MO. §	Lv																								
JOPLIN §	Lv																								
TULSA §	Lv	3.55																							
OKLAHOMA CITY §	Lv	D5.05																							
HOUSTON §	Lv																								
FT. WORTH §	Lv																								
DALLAS §	Lv			5.15		5.25	5.25																		
DALLAS §	Ar			D6.00		D6.10	D6.00																		
FT. WORTH §	Lv																								
SAN ANTONIO §	Ar			7.15	4.15																				
SAN ANTONIO §	Lv			8.00	4.35																				
MONTERREY §	Ar			9.20																					
MEXICO CITY §	Ar			11.40																					
MEXICO CITY §	Lv																								
MONTERREY §	Lv																								
MIDLAND/ODESSA § (CST)	Lv																								
EL PASO § (MST)	Ar					5.50																			
EL PASO §	Lv					D6.15																			
BISBEE/DOUGLAS §	Lv																								
TUCSON §	Lv	7.55																							
PHOENIX § (MST)	Lv	9.00				9.00																			
SAN DIEGO § (PST)	Ar	9.45				10.05																			
LOS ANGELES §	Ar	10.25				10.35																			
OAKLAND §	Lv	W1.29						10.30		W9.48	W9.48														
SAN FRANCISCO § (PST)	Ar	W1.25				11.30		11.05		W9.48	W9.48														
HONOLULU . . Via PAA (HST)	Ar									Fg.30	Fg.30														

OTHER WESTBOUND TRANSCONTINENTAL FLIGHTS SHOWN ON PRECEDING AND FOLLOWING PAGES

EXPLANATION OF REFERENCE MARKS PAGES 5, 6, 7

**EQUIPMENT:**

- ▲—DC-6 Flagship.
- ▣—DC-6 Airtourist Service.
- All other flights are Convair Flagships.
- AA—American Airlines.
- CAL—Continental Air Lines.
- DAL—Delta Air Lines.
- NAL—National Airlines.
- PAA—Pan American Airways.
- ①—Continental-American Thru Service.

- s—Light meal service.
- B—Breakfast.
- ②—Breakfast for boarding Passengers.
- c—Via connecting AA flight to New York.
- D—Dinner.
- ③—Dinner for boarding passengers.
- d—Dinner for through passengers.
- e—Dinner served to Nashville and Memphis passengers only.
- F—Except Mon. and Wed.
- Ⓢ—Will not operate Friday, May 30th.
- Ⓣ—Delta-American Thru Service.
- H—Sun. and Tue. only.
- h—Light meal for boarding passengers.
- ④—Will not operate Saturday, May 31st.

- K—Except Thu. and Sun.
- L—Lunch.
- ⑤—Lunch for boarding passengers.
- Ⓝ—National-Delta-American Thru Service.
- n—Lunch for through passengers.
- P—Except Tue., Wed. and Sun.
- r—Arrival time.
- T—Trans World Airlines.
- u—Via connecting AA flight to Buffalo.
- U—United Air Lines.
- v—Via connecting AA flight to Chicago.

- W—Western Air Lines.
- (CST)—Central Standard Time.
- (EST)—Eastern Standard Time.
- (MST)—Mountain Standard Time.
- (PST)—Pacific Standard Time.
- (HST)—Hawaii Standard Time.
- §—In terms of Local Daylight Time, all flights arrive and depart one hour later than shown.
- Light figures (10.40) indicate AM times.
- Dark figures (10.40) indicate PM times.
- Times shown in italics (10.40, 10.40) are connecting flights.

# EASTBOUND TRANSCONTINENTAL

For Complete Schedules New York to Boston See Page 17



ROUTE OF THE FLAGSHIPS

AMERICAN AIRLINES

ALL FLIGHTS DAILY Unless Otherwise Indicated	①	②	③	④	⑤	⑥	⑦	⑧	⑨	⑩	⑪	⑫	⑬	⑭	⑮	⑯	⑰	⑱	⑲	⑳	㉑	㉒
	22	730	64	484	738	262	426	54	34 Ex Sa	776	406	AA-DAL ▲902	▲2	▲30	738	▲6	▲6- ▲66	AA-DAL NAL ▲918	▲114	290	602 Air- Tourist	400
	AM	PM	PM	AM	PM	PM	AM	AM	PM	PM	PM	PM	PM	PM	PM	PM	PM	PM	PM	PM	AM	AM
HONOLULU . Via PAA (HST) Lv																						
SAN FRANCISCO . \$ (PST) Lv																						
OAKLAND . \$ " Lv																						
LOS ANGELES . \$ " Lv																						
SAN DIEGO . \$ (PST) Lv																						
PHOENIX . \$ (MST) Lv																						
TUCSON . \$ Lv																						
BISBEE/DOUGLAS . \$ Lv																						
EL PASO . \$ " Ar																						
EL PASO . \$ (MST) Lv							8.25															
MIDLAND/ODESSA . (CST) Lv							10.50															
MONTERREY . \$ " Ar																						
MEXICO CITY . \$ " Ar																						
MEXICO CITY . \$ Lv								B8.10														
MONTERREY . \$ " Ar																						
SAN ANTONIO . \$ " Ar																						
SAN ANTONIO . \$ Lv								11.00														
FT. WORTH . \$ " Ar								L1210														
DALLAS . \$ " Ar																						
DALLAS . \$ " Ar																						
FT. WORTH . \$ " Ar																						
HOUSTON . \$ " Ar																						
OKLAHOMA CITY . \$ " Ar																						
TULSA . \$ " Ar																						
JOPLIN . \$ " Ar																						
SPRINGFIELD, MO. \$ " Ar																						
ST. LOUIS . \$ " Ar																						
ST. LOUIS . \$ " Lv																						
NEW ORLEANS . \$ " Ar																						
SPRINGFIELD, ILL. \$ " Ar																						
PEORIA . \$ " Ar																						
CHICAGO . \$ " Ar																						
CHICAGO . \$ " Lv	12.35																					
MILWAUKEE . \$ " Ar	1.00																					
TEXARKANA . \$ " Ar	1.15																					
LITTLE ROCK . \$ " Ar																						
MEMPHIS . \$ " Ar																						
MEMPHIS . \$ " Ar																						
BIRMINGHAM . \$ " Ar																						
NASHVILLE . \$ " Ar																						
NASHVILLE . (CST) Lv																						
ATLANTA . \$ (EST) Ar																						
KNOXVILLE . \$ " Ar																						
KINGSPORT . \$ " Ar																						
JOHNSON CITY . \$ " Ar																						
BRISTOL . \$ " Ar																						
TAMPA . \$ " Ar																						
MIAMI . \$ " Ar																						
ROANOKE . \$ " Ar																						
LYNCHBURG . \$ " Ar																						
RICHMOND . \$ " Ar																						
DETROIT . \$ " Ar																						
CLEVELAND . \$ " Ar																						
BUFFALO . \$ " Ar																						
BUFFALO . \$ " Lv																						
ROCHESTER . \$ " Ar																						
SYRACUSE . \$ " Ar																						
WASHINGTON . \$ " Ar																						
BALTIMORE . \$ " Ar																						
PHILADELPHIA . \$ " Ar																						
NEW YORK (Idlewild) \$ " Ar																						
NEW YORK (La Guardia) \$ " Ar																						
BRIDGEPORT . \$ " Ar																						
NEW HAVEN . \$ " Ar																						
HARTFORD/SPGFL'D \$ " Ar																						
PROVIDENCE . \$ " Ar																						
BOSTON . \$ (EST) Ar																						

ALL TIMES SHOWN ARE STANDARD TIMES—ADD 1 HOUR FOR DAYLIGHT TIME

OTHER EASTBOUND TRANSCONTINENTAL FLIGHTS SHOWN ON PRECEDING AND FOLLOWING PAGES

EQUIPMENT:

- ▲ DC-6 Flagship.
- ◻ DC-6 Airtourist Service.
- All other flights are Convair Flagships.
- AA—American Airlines.
- CAL—Continental Air Lines.
- DAL—Delta Air Lines.
- NAL—National Airlines.
- PAA—Pan American Airways.
- Ⓐ Continental-American Through Service.
- a—Light meal service.
- B—Breakfast.

EXPLANATION OF REFERENCE MARKS PAGES 8, 9, 10

- c—Via connecting AA flight from N. Y.
- D—Dinner. d—Dinner for thru passengers.
- Ⓣ Will not operate Friday, May 30th.
- Ⓞ Delta-American Through Service.
- g—Light meal for through passengers.
- Ⓝ Will not operate Saturday, May 31st.
- k—Dinner for passengers connecting from Flight 114.
- L—Lunch.
- Ⓛ Lunch for boarding passengers.
- Ⓝ National-Delta-American Thru Service.
- n—Lunch for through passengers.
- r—Arrival time.
- T—Trans World Airlines.
- u—Via connecting AA flight from Buffalo.
- U—United Air Lines.
- W—Western Air Lines.
- X—Except Wednesday and Saturday.
- Y—Except Monday and Friday.
- z—Idlewild Airport, N. Y.
- (CST)—Central Standard Time.
- (EST)—Eastern Standard Time.
- (MST)—Mountain Standard Time.
- (PST)—Pacific Standard Time.

(HST)—Hawaii Standard Time.

§—In terms of Local Daylight Time, all flights arrive and depart one hour later than shown.

Light figures (10.40) indicate AM times. Dark figures (10.40) indicate PM times. Times shown in italics (10.40) are connecting flights.

†—Limousine service available from downtown San Francisco to Oakland Municipal Airport for this flight. — Fare \$1.50.

AIR MAIL . . . AIR EXPRESS . . . AIRFREIGHT . . . ARE ALL CARRIED ON EVERY FLIGHT SHOWN IN THIS TIMETABLE



AMERICAN AIRLINES

# EASTBOUND TRANSCONTINENTAL

For Complete Schedules New York to Boston See Page 17

AMERICAN AIRLINES ROUTE OF THE FLAGSHIPS

ALL TIMES SHOWN ARE STANDARD TIMES—ADD 1 HOUR FOR DAYLIGHT TIME

ALL FLIGHTS DAILY Unless Otherwise Indicated	▲14	▲60 Ex Su	▲38	▲610 Air-Tourist	704	▲480 Ex Su	▲760	▲16	▲62	AA-DAL- NAL ▲908	470	▲24	AA-DAL ▲910	482	710	8	286	48	AA-CAL ▲952	AA-DAL ▲900	416	414
	PM	AM	PM	PM	AM	AM	AM	AM	AM	PM	AM	PM	PM	AM	PM	AM	AM	AM	PM	PM	PM	AM
HONOLULU . Via PAA (HST) Lv																						
SAN FRANCISCO . \$ (PST) Lv	W 6:00		U 8:00	W 8:40						W 8:40			8:50					X 8:00	W 8:40	W 10:00		
OAKLAND . \$ " Lv	W 5:25																					
LOS ANGELES . \$ " Lv	10:00		a 10:30	10:59						10:55									11:15	a 12:20		
SAN DIEGO . \$ (PST) Lv										12:01												
PHOENIX . \$ (MST) Lv													12:40									
TUCSON . \$ " Lv													1:45									
BISBEE/DOUGLAS . \$ " Lv													3:00									
EL PASO . \$ " Ar													3:20									
EL PASO . \$ (MST) Lv																						
MIDLAND/ODESSA . \$ (CST) Lv																						
MONTERREY . \$ " Ar																						
MEXICO CITY . \$ " Ar																						
MEXICO CITY . \$ " Lv																						
MONTERREY . \$ " Lv																						
SAN ANTONIO . \$ " Ar																						
SAN ANTONIO . \$ " Lv																						
FT. WORTH . \$ " Ar																						
DALLAS . \$ " Ar																						
DALLAS . \$ " Lv																						
FT. WORTH . \$ " Ar																						
HOUSTON . \$ (A) " Ar																						
OKLAHOMA CITY . \$ " Lv																						
TULSA . \$ " Lv																						
JOPLIN . \$ " Lv																						
SPRINGFIELD, MO . \$ " Lv																						
ST. LOUIS . \$ " Ar																						
NEW ORLEANS . \$ (C) " Ar																						
SPRINGFIELD, ILL . \$ " Lv																						
PEORIA . \$ " Lv																						
CHICAGO . \$ " Ar																						
CHICAGO . \$ " Lv	6:30		7:00	7:29	8:00	8:15	9:00	9:57	10:15	11:00	8:46	1:10	2:00									
MILWAUKEE . \$ " Ar	B 7:00	B 7:15			9:15							1:35	2:10									
TEXARKANA . \$ " Lv																						
LITTLE ROCK . \$ " Lv																						
MEMPHIS . \$ " Ar																						
MEMPHIS . \$ " Lv																						
BIRMINGHAM . \$ (C) " Ar																						
NASHVILLE . \$ " Ar																						
NASHVILLE . \$ (CST) Lv																						
ATLANTA . \$ (EST) " Ar																						
KNOXVILLE . \$ " Lv																						
KINGSPORT . \$ " Lv																						
JOHNSON CITY . \$ " Lv																						
BRISTOL . \$ " Ar																						
TAMPA . \$ (N) " Ar																						
MIAMI . \$ (N) " Ar																						
ROANOKE . \$ " Lv																						
LYNCHBURG . \$ " Lv																						
RICHMOND . \$ " Lv																						
DETROIT . \$ " Ar																						
CLEVELAND . \$ " Ar																						
BUFFALO . \$ " Ar																						
BUFFALO . \$ " Lv																						
ROCHESTER . \$ " Ar																						
SYRACUSE . \$ " Ar																						
WASHINGTON . \$ " Ar																						
BALTIMORE . \$ " Ar																						
PHILADELPHIA . \$ " Ar																						
NEW YORK (Idlewild) . \$ " Ar																						
NEW YORK (La Guardia) . \$ " Ar	10:55																					
BRIDGEPORT . \$ " Ar																						
NEW HAVEN . \$ " Ar																						
HARTFORD/SPGFL'D . \$ " Ar	c 12:30																					
PROVIDENCE . \$ " Ar	c 1:12																					
BOSTON . \$ (EST) Ar	c 1:18																					

EASTBOUND TRANSCONTINENTAL FLIGHTS CONTINUED ON FOLLOWING PAGES

## ★ CONDENSED WESTCOAST-EASTCOAST SCHEDULES ★

ALL FLIGHTS DAILY Unless Otherwise Indicated	▲30	▲6 The Advance Mercury	▲6-▲66 Washington Section Advance Mercury	▲918- ▲10	▲918- ▲114	▲10	▲10- ▲114	602 Air- Tourist	606- ▲72 Ex Sa	606 Air- Tourist	▲44 The South- erner	▲4 The Mercury (Sky Sleeper)	604 Air- Tourist	▲14 The Mercury Night Owl	▲14- ▲60 Ex Sa	610 Air- Tourist	▲48	
	AM	AM	AM	AM	AM	AM	AM	AM	AM	AM	AM	PM	PM	PM	PM	PM	PM	
SAN FRANCISCO . \$ (PST) Lv	W 2:00	U 2:00	U 2:00	L 7:20	L 7:20	W 7:00	W 7:00	U 6:00	W 7:30	W 7:30	D 5:40	T 4:15	T 4:15	W 6:00	W 6:00	W 8:40	B 11:05	
LOS ANGELES . \$ (PST) Lv	L 7:15	L 8:00	L 8:00	L 7:20	L 7:20	L 9:15	L 9:15	9:00	11:30	11:30		D 6:00	6:10	10:00	10:59			
DALLAS . \$ (CST) Lv																		
CHICAGO . \$ (CST) Ar	D 3:45	D 4:30	D 4:30	D 3:55	D 3:55	D 4:00	D 4:00	5:30	8:00	8:00	B 1:30	B 2:30	12:55	B 6:30	B 6:30	7:29		
WASHINGTON . \$ (EST) Ar			8:45															
NEW YORK (La Guardia) . \$ Ar		8:55		10:40	10:45	10:40	10:45	9:55	12:25	8:50	7:20	6:50	6:50	10:55	10:45	11:55	n 1:00	
BOSTON . \$ (EST) Ar	10:00	c 1:13		c 1:18		c 2:48		c 1:18	c 2:48	c 10:48	c 8:48	c 10:18	c 1:18			c 2:18	c 5:18	

SEE FOLLOWING PAGE FOR EXPLANATION OF REFERENCE MARKS





# EASTBOUND TRANSCONTINENTAL

For Complete Schedules New York to Boston See Page 17

AMERICAN AIRLINES

ALL FLIGHTS DAILY  
Unless Otherwise Indicated

	10	158	790 Sun. Only	606 Air- Tourist	72 Ex Sa	472	474	116	AA- CAL 954	112	90	490	44	156	12	282	412 Ex Su	4	604 Air- Tourist	154 Sat. Only	36	778
	PM	AM	PM	PM	PM	PM	PM	PM	PM	PM	PM	PM	PM	PM	PM	AM	AM	PM	PM	PM	PM	AM
HONOLULU... Via PAA (HST) Lv	Y5.30			5.00					6.00													
SAN FRANCISCO... (PST) Lv	W7.00			W7.30					1.15				D5.40		W2.00			W2.00				U4.00
OAKLAND... Lv	W6.30			W7.00											W1.30			W1.30				U3.10
LOS ANGELES... Lv	L9.15			11.30						2.15					4.50			6.10				7.05
SAN DIEGO... (PST) Lv															D5.50							8.00
PHOENIX... (MST) Lv															8.30							10.35
TUCSON... Lv															9.30							11.40
BISBEE/DOUGLAS... Lv																						
EL PASO... Ar									6.05	6.00												
EL PASO... (MST) Lv									D6.35	D6.30					10.45							
MIDLAND/ODESSA... (CST) Lv										D6.45					11.10							
MONTERREY... Ar																						
MEXICO CITY... Ar										10.00												
MEXICO CITY... Lv										12.20												
MONTERREY... Lv			9.55												9.15							10.45
SAN ANTONIO... Ar			L1215																			
SAN ANTONIO... Lv			1.30												12.05							1.35
SAN ANTONIO... Ar			2.40												1.15							2.45
FT. WORTH... Ar							2.30	4.30														
DALLAS... Ar							2.48	4.48														
DALLAS... Lv	4.00		3.50																			
DALLAS... Ar	D4.30		D4.25				3.00	5.00	D6.55				1.30	B1.55	B2.55	3.00						
FT. WORTH... Ar																						
HOUSTON... Ar																						
OKLAHOMA CITY... Lv							4.10	6.10														
TULSA... Lv							D5.05	a7.05		10.55												
JOPLIN... Lv								7.55														
SPRINGFIELD, MO... Lv								8.35														
ST. LOUIS... Ar							6.49	9.36														
ST. LOUIS... Lv							7.05	9.50														
NEW ORLEANS... Ar																						
SPRINGFIELD, ILL... Lv							7.55															
PEORIA... Lv																						
CHICAGO... Ar			7.35				8.52	11.10														
CHICAGO... Lv				8.00			8.52	11.10														
MILWAUKEE... Ar				8.15			9.15															a6.45
TEXARKANA... Lv																						
LITTLE ROCK... Lv																						
MEMPHIS... Ar															4.45							
MEMPHIS... Lv															5.10							
BIRMINGHAM... Ar															6.10							
NASHVILLE... Ar																						
NASHVILLE... (CST) Lv															B6.35	a7.00	a7.00					
ATLANTA... (EST) Ar																						
KNOXVILLE... Lv															8.50		9.05					
KINGSPORT... Lv																	9.55					
JOHNSON CITY... Lv																						
BRISTOL... Ar																						
TAMPA... Ar																						
MIAMI... Ar																						
ROANOKE... Lv																						
LYNCHBURG... Lv																						
RICHMOND... Lv																						
DETROIT... Ar			10.25					11.25														8.55
CLEVELAND... Ar								12.57														10.48
BUFFALO... Ar																						11.30
BUFFALO... Lv																						11.57
ROCHESTER... Ar																						12.37
SYRACUSE... Ar																						
WASHINGTON... Ar																						
BALTIMORE... Ar																						
PHILADELPHIA... Ar																						
NEW YORK (Idlewild) Ar																						
NEW YORK (La Guardia) Ar																						
BRIDGEPORT... Ar																						
NEW HAVEN... Ar																						
HARTFORD/SPGL'D Ar																						
PROVIDENCE... Ar																						
BOSTON... (EST) Ar																						

← OTHER EASTBOUND TRANSCONTINENTAL FLIGHTS SHOWN ON PRECEDING PAGES

AMERICAN AIRLINES

ALL TIMES SHOWN ARE STANDARD TIMES—ADD 1 HOUR FOR DAYLIGHT TIME

NO  
LOWER  
FARES IN  
SCHEDULED  
AIR TRANSPORTATION

FLY DC-6 AIRTOURIST SERVICE and SAVE

Check These Fares for the Bargain Travel Buy of the Year

New York - Chicago . . . \$33      New York - Los Angeles . . \$99      Dallas - Los Angeles . . . \$57

Chicago - Los Angeles . . \$76      New York - Dallas . . . \$63      Washington - Dallas . . . \$54

Washington - Los Angeles . \$98

Also between most U. S. cities via connecting Flagship service

SEE PRECEDING PAGE FOR EXPLANATION OF REFERENCE MARKS

# NEW YORK - BUFFALO - DETROIT - CHICAGO

Westbound - Continued



AMERICAN AIRLINES

ALL FLIGHTS DAILY Unless Otherwise Indicated		PM	PM	PM	PM	733	PM	PM	PM	PM	PM	753	PM	PM	PM	PM	PM	PM	PM	PM						
BOSTON	(EST) Lv	t 7.25	c 2.00		t 7.25	PM	D 4.20					PM	PM	c 5.00	t 6.15	c 6.00	t 6.15			PM	PM					
PROVIDENCE	" Lv													c 4.40		c 6.40										
HARTFORD	" Lv																									
SPRINGFIELD	" Lv																									
NEW HAVEN	" Lv																									
BRIDGEPORT	" Lv																									
		795	▲ 19		752	727	739 Ex Sa			797	▲ 21 Ex Sa	737 Ex Sa	725	▲ 47	741		759	▲ 129	775 Ex Sa	▲ 41 Ex Sa	787 Ex Sa	765	719 Sun. Only	▲ 3		
NEW YORK (La Guardia)	" Lv		D 4.00		4.20																					
NEW YORK (Idlewild)	" Lv	3.40			D 4.30	D 4.40				D 5.00		D 5.30	D 5.50	6.00	6.40		6.50		7.00		7.50	8.00	8.40	8.50	11.10	11.20
WHITE PLAINS	" Lv																									
ALBANY/SCHENECTADY	" Ar				5.12																					
ALBANY/SCHENECTADY	" Lv																									
WILKES-BARRE	" Ar																									
SCRANTON	" Lv																									
ELMIRA-CORNING	" Ar																									
SYRACUSE	" Ar																									
SYRACUSE	" Lv									6.10		7.10									9.10		10.10			
ROCHESTER	" Ar									6.22		7.22									9.22		10.22			
ROCHESTER	" Lv									6.56		7.56									9.56		10.56			
ROCHESTER	" Ar									7.06		8.06									10.06		11.06			
TORONTO	" Lv																									
TORONTO	" Ar																									
BUFFALO	" Ar	5.21				6.21	6.34	7.36					8.36	8.21	9.05		10.36				10.21	11.36	12.48			
BUFFALO	" Lv	D 5.50				6.50	7.50																			
NIAGARA FALLS	" Ar																									
TORONTO	" Ar																									
ERIE	" Ar																									
CLEVELAND	" Ar																									
CLEVELAND	" Lv																									
DETROIT	" Ar	7.15			7.25		8.15	9.15																		
DETROIT	" Lv	7.30					8.30																			
JACKSON	" Ar																									
BATTLE CREEK	" Ar																									
KALAMAZOO	(EST) Lv																									
SOUTH BEND	(CST) Lv																									
CHICAGO	" Ar	7.47					8.47																			
ST. LOUIS	(CST) Ar		v 9.36																							
		PM	PM	PM	PM	PM	PM	PM	PM	PM	PM	PM	PM	PM	PM	PM	PM	PM	PM	PM	PM	PM	PM	AM	AM	AM

## ★ NON-STOP SERVICE ★ NEW YORK Every Hour on the Hour CHICAGO

ALL FLIGHTS DAILY Unless Otherwise Indicated	737 Ex Su	611 Air-Tourist	▲ 15	601 Air-Tourist	▲ 17	▲ 5	729	▲ 23	603 Air-Tourist	▲ 27	▲ 19	721 Ex Sa	▲ 47	741 Ex Sa	▲ 3
NEW YORK (La Guardia)	(EST) Lv	7.30	a 8.00	9.00	L 10.00	L 11.00	L 12.00	1.00	2.00	D 3.00	D 4.00	D 5.00	D 6.00	8.00	11.20
CHICAGO	(CST) Ar	9.15	10.15	11.15	12.15	1.15	2.15	3.15	4.15	5.15	6.15	7.15	8.15	10.15	AM

### NEW YORK TO DETROIT

ALL FLIGHTS DAILY Unless Otherwise Indicated	721	729 Ex Su	713	709 Ex Sa	▲ 125	727	737 Ex Sa	▲ 129	
NEW YORK (La Guardia)	(EST) Lv	a 6.30	8.20	L 10.30	12.30	2.30	D 4.30	D 5.30	7.00
NEW YORK (Idlewild)	(EST) Lv								
DETROIT	(EST) Ar	9.25	11.15	1.25	3.25	4.55	7.25	8.25	9.25

### DETROIT TO CHICAGO

ALL FLIGHTS DAILY Unless Otherwise Indicated	715	703 Ex Su	731	▲ 31	723	705	771	767	711	795	733	▲ 129	753
DETROIT	(EST) Lv	a 7.30	8.30	9.30	L 11.30	L 12.35	2.30	4.30	D 5.30	7.30	8.30	9.55	11.00
CHICAGO	(CST) Ar	7.47	8.47	9.47	11.40	12.52	2.47	4.47	5.47	7.47	8.47	10.05	11.17

### NEW YORK TO BUFFALO

ALL FLIGHTS DAILY Unless Otherwise Indicated	757 Ex Su	▲ 153	789	735	773	795	739 Ex Sa	741	787 Ex Sa	719 Sun. Only	
NEW YORK (La Guardia)	(EST) Lv	a 6.40	9.35	L 10.40	1.40	2.40	3.40	D 4.40	6.40	8.40	11.10
NEW YORK (Idlewild)	(EST) Lv										
BUFFALO	(EST) Ar	8.21	11.05	12.21	3.21	4.21	5.21	6.21	8.21	10.21	12.48

### NEW YORK TO SYRACUSE

ALL FLIGHTS DAILY Unless Otherwise Indicated	783 Sat Only	777 Ex Sa & Su	701	771	711	735	797	725	775 Ex Sa	765	
NEW YORK (La Guardia)	(EST) Lv	a 6.30	7.50	8.50	L 10.50	12.50	2.50	D 4.50	D 5.50	7.50	8.50
NEW YORK (Idlewild)	(EST) Lv										
SYRACUSE	(EST) Ar	7.47	9.10	10.10	12.10	2.10	4.10	6.10	7.10	9.10	10.10

## CANADIAN SERVICE NEW YORK - BUFFALO - TORONTO

ALL FLIGHTS DAILY Unless Otherwise Indicated	757 Ex Su	789	735	759	
NEW YORK (La Guardia)	(EST) Lv	a 6.40	L 10.40	1.40	6.50
NEW YORK (Idlewild)	" Lv				
BUFFALO	" Ar	8.21	12.21	3.21	
BUFFALO	" Lv	8.35	12.35	3.35	
TORONTO	(EST) Ar	9.09	1.09	4.09	8.53

← SEE PRECEDING PAGE FOR EXPLANATION OF REFERENCE MARKS

ROUTE OF THE FLAGSHIPS

ALL TIMES SHOWN ARE STANDARD TIMES—ADD 1 HOUR FOR DAYLIGHT TIME

AMERICAN AIRLINES



# CHICAGO - DETROIT - BUFFALO - NEW YORK

Eastbound - Continued



ROUTE OF THE FLAGSHIPS

ALL TIMES SHOWN ARE STANDARD TIMES—ADD 1 HOUR FOR DAYLIGHT TIME

AMERICAN AIRLINES

ALL FLIGHTS DAILY Unless Otherwise Indicated		706 Ex Sa	708	18	124	30	6	716 Ex Sa	718 Sun Only	738	746	602 Air-Tourist	34 Ex Sa	712 Ex Sa	776	42 Ex Sa	790 Sun Only	606 Air-Tourist	190 Ex Sa & Su	472	192 Ex Sa & Su	4	
ST. LOUIS	..(CST) Lv		v11.60				v2.30					v2.30	v5.05				v5.05	v5.05					
CHICAGO	..(CST) Lv	D3.00	3.15	D4.00		4.15	D5.00					6.00	7.00				8.15	8.30					
SOUTH BEND	..(CST) Lv																						
BATTLE CREEK	..(EST) Ar																						
KALAMAZOO	..(EST) Ar																						
JACKSON	..(EST) Ar																						
DETROIT	..(EST) Ar		5.25			6.20				7.25													
DETROIT	..(EST) Lv	D5.00						D7.00		7.40													
CLEVELAND	..(EST) Ar																						
CLEVELAND	..(EST) Lv																						
ERIE	..(EST) Ar																						
TORONTO	..(EST) Lv																						
NIAGARA FALLS	..(EST) Lv																						
BUFFALO	..(EST) Ar		6.57			7.50				8.57													
BUFFALO	..(EST) Lv		7.10			8.15			9.05	9.10	9.25												
TORONTO	..(EST) Ar																						
ROCHESTER	..(EST) Ar		7.37							9.37													
ROCHESTER	..(EST) Lv		7.47							9.47													
SYRACUSE	..(EST) Ar		8.17							10.17													
SYRACUSE	..(EST) Lv		8.30							10.30													
ELMIRA-CORNING	..(EST) Ar																						
WILKES-BARRE	..(EST) Ar																						
SCRANTON	..(EST) Ar																						
ALBANY/SCHENECTADY	..(EST) Ar																						
ALBANY/SCHENECTADY	..(EST) Lv																						
WHITE PLAINS	..(EST) Ar																						
NEW YORK (Idlewild)	..(EST) Ar	7.27		9.40				9.27		11.40	10.53												
NEW YORK (La Guardia)	..(EST) Ar		6.55		7.55	8.05		8.55	10.30			9.55	10.55	11.24				12.25	12.55		4.30	6.55	
BRIDGEPORT	..(EST) Ar																						
NEW HAVEN	..(EST) Ar																						
HARTFORD	..(EST) Ar																						
SPRINGFIELD	..(EST) Ar																						
PROVIDENCE	..(EST) Ar	c9.02		c11.02				c11.02															
BOSTON	..(EST) Ar	c9.18		c10.18				c11.18															

## ★ NON-STOP SERVICE ★ CHICAGO TO NEW YORK

ALL FLIGHTS DAILY Unless Otherwise Indicated		14	610 Air-Tourist	20	16	28	22	24	40	18	6	602 Air-Tourist	34 Ex Sa	42 Ex Sa	606 Air-Tourist	190 Ex Sa & Su	4
CHICAGO	..(CST) Lv	B7.00	8.00	L10.00	L11.00	L12.00	1.00	2.00	D3.00	D4.00	D5.00	PM	PM	PM	PM	PM	AM
NEW YORK (La Guardia)	..(EST) Ar	10.55	11.55	PM	2.55	3.55	4.55	5.55	6.55	7.55	8.55	9.55	10.55	11.55	12.25	12.55	AM

## DETROIT TO NEW YORK

ALL FLIGHTS DAILY Unless Otherwise Indicated		724 Ex Su	736	728 Ex Su	726 Ex Sa	730	706 Ex Sa	124	716 Ex Sa	712 Ex Sa	192 Ex Su & Mo
DETROIT	..(EST) Lv	B8.30	L10.00	L12.00	PM	D4.00	D5.00	D6.00	D7.00	PM	AM
NEW YORK (Idlewild)	..(EST) Ar	10.57	12.27	2.27	4.27	6.24	7.27	8.05	9.27	11.24	4.30
NEW YORK (La Guardia)	..(EST) Ar										

## CHICAGO TO DETROIT

ALL FLIGHTS DAILY Unless Otherwise Indicated		778	732	704	760	726 Ex Sa	710	730	708	30	738	776	790 Su Only	472	192 Ex Sa & Su
CHICAGO	..(CST) Lv	a6.45	8.15	9.15	10.15	L11.15	L12.15	1.15	3.15	4.15	D5.15	7.15	8.15	9.15	11.45
DETROIT	..(EST) Ar	8.55	10.25	11.25	12.25	1.25	2.25	3.25	5.25	6.20	7.25	9.25	10.25	11.25	1.50

## BUFFALO TO NEW YORK

ALL FLIGHTS DAILY Unless Otherwise Indicated		772 Ex Su	758 Ex Su	798	482	792	742	718 Sun Only	746
BUFFALO	..(EST) Lv	7.25	9.25	L11.25	PM	3.25	4.00	6.25	9.05
NEW YORK (Idlewild)	..(EST) Ar	8.53	10.53	12.53		5.28	6.28	7.53	10.53
NEW YORK (La Guardia)	..(EST) Ar				4.50			10.30	

## SYRACUSE TO NEW YORK

ALL FLIGHTS DAILY Unless Otherwise Indicated		770 Ex Su	766 Ex Su	762 Ex Sa & Sun	780	702	704	794	710 Sun Only	748	708	738
SYRACUSE	..(EST) Lv	a6.30	7.30	a11.30	12.30	1.30	2.30	D4.30	D5.30	7.30	8.30	10.30
NEW YORK (Idlewild)	..(EST) Ar	7.40	8.40	12.40	1.40	2.40	3.40	5.40	6.37	8.40	9.40	11.40
NEW YORK (La Guardia)	..(EST) Ar											

## CANADIAN SERVICE

### TORONTO - BUFFALO - NEW YORK

ALL FLIGHTS DAILY Unless Otherwise Indicated		758 Ex Su	798	792	754
TORONTO	..(EST) Lv	8.40	10.40	3.15	D5.15
BUFFALO	..(EST) Ar	9.12	11.12	3.47	
BUFFALO	..(EST) Lv	9.25	L11.25	4.00	
NEW YORK (Idlewild)	..(EST) Ar	10.53	12.53	6.28	6.58
NEW YORK (La Guardia)	..(EST) Ar				

SEE PRECEDING PAGE FOR EXPLANATION OF REFERENCE MARKS



# CHICAGO - DETROIT - BUFFALO - NEW YORK

Eastbound

ALL FLIGHTS DAILY  
Unless Otherwise Indicated

	749 Ex Su	770 Ex Su	766 Ex Su	766 Su Only	768	772 Ex Su	758 Ex Su	724 Ex Su	762 Ex Sa & Su	780	778	14	610 Air-Tourist	736	798	702	732	789	704	728 Ex Su	288
ST. LOUIS	AM	AM	AM	AM	AM	AM	AM	AM	AM	AM	AM	AM	AM	AM	AM	PM	AM	PM	AM	AM	AM
CHICAGO											a6.45	b7.00	8.00				8.15		9.15		
SOUTH BEND																					
BATTLE CREEK																					
KALAMAZOO																					
JACKSON																					
DETROIT											8.55						10.25		11.25		
DETROIT								B8.30			9.10			L1000			10.40		L1140	L1200	
CLEVELAND																					11.20
CLEVELAND																					a12.06
ERIE																					
TORONTO							8.40								10.40						
NIAGARA FALLS											10.32				11.12						
BUFFALO							9.12				10.48				11.12						12.43
BUFFALO		a5.35	6.10	6.10	a6.25	7.25	9.25				11.30				L1125	12.10	L1210	12.35	1.10		1.25
TORONTO																					
ROCHESTER			6.37	6.37	6.52						11.57						12.37		1.37		
ROCHESTER			a6.47	a6.47	7.02				10.47	11.47	12.07						12.47		1.47		
SYRACUSE		6.17		7.17	7.32				11.17	12.17	12.37						1.17		2.17		
SYRACUSE				7.30	7.44				a11.30	12.30	12.49						1.30		2.30		
ELMIRA-CORNING		h6.30																			2.15
WILKES-BARRE																					2.47
SCRANTON																					3.00
ALBANY/SCHENECTADY					8.28						1.33										
ALBANY/SCHENECTADY					8.40						1.45										
WHITE PLAINS	7.35					8.53	10.53														
NEW YORK (Idlewild)		7.40	8.10	8.40				10.57	12.40	1.40					12.27	12.53	2.40		3.40	2.27	3.40
NEW YORK (La Guardia)	8.28											10.55	11.55								
BRIDGEPORT																					
NEW HAVEN																					
HARTFORD					9.14																
SPRINGFIELD								c12.30				c12.30	c3.30								6.30
PROVIDENCE													c2.02								6.02
BOSTON					10.02								c1.18								

# CHICAGO - DETROIT - BUFFALO - NEW YORK

Eastbound - Continued

ALL FLIGHTS DAILY  
Unless Otherwise Indicated

	20	760	735	16	726 Ex Sa	786 Ex Sa	794 Ex Sa	786 Sat. Only	482	792	28	710 Ex Sa & Su	710 Sa & Su Only	22	730	407	754	748	742	286	24
ST. LOUIS	AM	AM	PM	AM	AM	PM	PM	PM	AM	AM	AM	AM	AM	PM	PM	PM	PM	AM	PM	PM	AM
CHICAGO	L1000	10.15		L1100	v8.15 L1115				L1035		L1200	v8.15 L1215	v8.15 L12.15	1.00	1.15			v8.15			v11.50 2.00
SOUTH BEND																					
BATTLE CREEK																					
KALAMAZOO																					
JACKSON																					
DETROIT		12.25			1.25							2.25	2.25		3.25						
DETROIT		L1240			2.00							2.40	2.40		D400			4.40			
CLEVELAND									1.52												D5.30
CLEVELAND									2.05												
ERIE																					
TORONTO										3.15											
NIAGARA FALLS																	D5.15				
BUFFALO		1.57										3.57	3.57					5.57			6.34
BUFFALO		2.10	3.35				3.10		3.25	4.00		4.10	4.10					6.10	6.25	6.55	
TORONTO			4.09																		
ROCHESTER								3.37				4.37	4.37					6.37			
ROCHESTER						3.47		3.47				4.47	4.47					6.47			
SYRACUSE								4.17				5.17	5.17					7.17			7.37
SYRACUSE							D4.30	D4.30				D5.30	D5.30					d7.30			7.50
ELMIRA-CORNING																					
WILKES-BARRE																					
SCRANTON																					
ALBANY/SCHENECTADY		3.25																			8.34
ALBANY/SCHENECTADY		3.37																			8.45
WHITE PLAINS					4.27	5.10	5.40	5.40		5.28		6.41				5.35					
NEW YORK (Idlewild)									4.50		5.55	7.09	6.37	4.55	6.24	6.23	6.58	8.40	7.53		
NEW YORK (La Guardia)	1.55			2.55																	5.55
BRIDGEPORT																					
NEW HAVEN																					
HARTFORD																					
SPRINGFIELD	c3.30	4.11		c6.30	t8.10	t8.10	t8.10	t8.10	c6.30	t8.10	c6.30			c6.30			t8.10				9.19
PROVIDENCE	c4.02			c6.02	t8.18	t8.58	t8.58	t8.58	c7.18	t8.58	c6.02	c9.02	c9.02	c9.02	c9.02						c9.02
BOSTON	c4.18	4.59		c5.18	t7.18	t8.58	t8.58	t8.58	c7.18	t8.58	c6.18	c9.18	c9.18	c7.18	c8.18		t8.58				c8.18

EQUIPMENT:

- ▲—DC-6 Flagship.
- DC-6 Airtourist Service.
- All other flights are Convair Flagships.
- a—Light meal service.
- b—Breakfast.
- c—Via connecting AA flight from New York.
- d—Dinner.

- d—Dinner for through passengers.
- Ⓢ—Will not operate Friday, May 30th.
- h—Light meal for boarding passengers.
- Ⓢ—Will not operate Saturday, May 31st.
- Ⓢ—Operates as flight 786 on Saturdays—See table above.
- L—Lunch.

- Ⓢ—Will operate Friday, May 30th.
- Ⓢ—Will operate Saturday, May 31st.
- t—Via connecting AA flight from Idlewild Airport, N. Y.
- v—Via connecting AA flight to Chicago.
- Ⓢ—Detroit-Ann Arbor-Windsor served through the Willow Run Airport.
- (EST)—Eastern Standard Time.

- (CST)—Central Standard Time.
- Ⓢ—In terms of Local Daylight Time, all flights arrive and depart one hour later than shown.
- Light figures (10.40) indicate AM times.
- Dark figures (10.40) indicate PM times.
- Times shown in italics (10.40, 10.40) are connecting flights.

# RICHMOND - WASHINGTON - NEW YORK - BOSTON

Northbound



ALL FLIGHTS DAILY Unless Otherwise Indicated		AM	AM	AM	AM	AM	AM	AM	AM	AM	AM	AM	AM	AM	AM	AM	AM	AM	
RICHMOND	(EST) Lv																		
WASHINGTON	" Ar																		
BALTIMORE	" Ar				a5.50	a6.15	6.15		a6.45	7.15	7.45	8.15			8.45	9.45	10.15	L1045	
BALTIMORE	" Lv																		
WILMINGTON	" Lv																		
PHILADELPHIA	" Ar				6.35														
PHILADELPHIA	" Lv				6.45														
NEW YORK (Idlewild)	" Ar																		
NEW YORK (La Guardia)	(EST) Ar				7.25	7.25	7.48		7.50	8.20	8.50				9.50	10.55	11.25	11.55	
		ⓂⓂ	ⓂⓂ	ⓂⓂ	ⓂⓂ	ⓂⓂ	ⓂⓂ	ⓂⓂ	ⓂⓂ	ⓂⓂ	ⓂⓂ	ⓂⓂ	ⓂⓂ	ⓂⓂ	ⓂⓂ	ⓂⓂ	ⓂⓂ	ⓂⓂ	
		376	316	382	308	302	366	300	768	306	372		332	354	310	344		350	374
NEW YORK (La Guardia)	(EST) Lv	a5.50	a6.10	a6.15	7.15	7.45	8.10	8.15	8.50	9.15		9.45	10.10	10.15		11.15		11.50	12.15
NEW YORK (Idlewild)	" Lv																		
BRIDGEPORT	" Lv												10.45						
NEW HAVEN	" Lv												11.09						
HARTFORD	" Ar	6.30																	
SPRINGFIELD	" Lv							9.24		9.30								12.30	
PROVIDENCE	" Ar		7.02				9.02											12.40	
BOSTON	(EST) Ar			7.18	8.18	8.48	9.38	9.18	10.02			10.41	10.48	11.18		12.18			1.18

# RICHMOND - WASHINGTON - NEW YORK - BOSTON

Northbound - Continued

ALL FLIGHTS DAILY Unless Otherwise Indicated		AM	PM	AM	AM	PM	AM	PM	PM	PM	PM	PM	PM	PM	PM	PM	PM	PM	PM
RICHMOND	(EST) Lv																		
WASHINGTON	" Ar																		
BALTIMORE	" Ar	11.10		11.35	L1145	12.32	1.15	1.25		1.45		3.00	3.00	3.15	3.45	4.15	4.45	D5.00	D5.45
BALTIMORE	" Lv			11.55		12.45								3.35	3.45				
WILMINGTON	" Lv			12.05															
PHILADELPHIA	" Ar	11.55						2.10											
PHILADELPHIA	" Lv	12.10						2.25						3.45					
NEW YORK (Idlewild)	" Ar													4.00					
NEW YORK (La Guardia)	(EST) Ar	12.50		1.25	12.55	1.55	2.25	3.05		2.55	3.38	4.10							
		ⓂⓂ	ⓂⓂ	ⓂⓂ	ⓂⓂ	ⓂⓂ	ⓂⓂ	ⓂⓂ	ⓂⓂ	ⓂⓂ	ⓂⓂ	ⓂⓂ	ⓂⓂ	ⓂⓂ	ⓂⓂ	ⓂⓂ	ⓂⓂ	ⓂⓂ	ⓂⓂ
			362		340	394	322		392	338	760	352			396	388	314	320	
NEW YORK (La Guardia)	(EST) Lv		1.10		1.15	2.15	2.50	3.10	3.15	4.15				6.10	6.15	5.50	6.15		
NEW YORK (Idlewild)	" Lv																		
BRIDGEPORT	" Lv																		
NEW HAVEN	" Lv																		
HARTFORD	" Ar						3.30									6.30			
SPRINGFIELD	" Lv									4.21									
PROVIDENCE	" Ar		2.02					4.02		4.18	4.59	5.18		5.26	6.02				
BOSTON	(EST) Ar		2.38		2.18	3.18									6.18			7.18	7.02

# RICHMOND - WASHINGTON - NEW YORK - BOSTON

Northbound - Continued

ALL FLIGHTS DAILY Unless Otherwise Indicated		PM	PM	PM	PM	PM	PM	PM	PM	PM	PM	PM	PM	PM	PM	PM	PM	PM	PM
RICHMOND	(EST) Lv																		
WASHINGTON	" Ar																		
WASHINGTON	" Lv	6.00		6.45		6.55	7.02	7.20		7.45		9.45	10.05	11.10	11.15	12.45			
BALTIMORE	" Ar																		
BALTIMORE	" Lv												10.25						
WILMINGTON	" Lv												10.35						
PHILADELPHIA	" Ar						8.05							11.55					
PHILADELPHIA	" Lv						8.20							12.10					
NEW YORK (Idlewild)	" Ar		7.10																
NEW YORK (La Guardia)	(EST) Ar				7.55	8.05	9.00		8.50			10.55	11.38	12.50	12.20	1.50			
		ⓂⓂ	ⓂⓂ	ⓂⓂ	ⓂⓂ	ⓂⓂ	ⓂⓂ	ⓂⓂ	ⓂⓂ	ⓂⓂ	ⓂⓂ	ⓂⓂ	ⓂⓂ	ⓂⓂ	ⓂⓂ	ⓂⓂ	ⓂⓂ	ⓂⓂ	ⓂⓂ
		398	342	328	318	286		368	390	390	346	510			312				
NEW YORK (La Guardia)	(EST) Lv	7.15		8.10	8.15			9.15	10.10	10.10	10.15	11.15			1.45				
NEW YORK (Idlewild)	" Lv		7.30																
BRIDGEPORT	" Lv																		
NEW HAVEN	" Lv																		
HARTFORD	" Ar		8.10							10.50									
SPRINGFIELD	" Lv		8.20				9.30			11.02									
PROVIDENCE	" Ar			9.02						11.34									
BOSTON	(EST) Ar	8.18	8.58	9.38	9.18	10.08		10.18	11.38	12.10	11.18	12.18			2.48				

EQUIPMENT:  
 ▲—DC-6 Flagship. Ⓜ—DC-6 70-Passenger.  
 All other flights are Convair Flagships.  
 a—Light meal service.  
 B—Breakfast.  
 D—Dinner.

Ⓜ—Will not operate Sunday, June 1st.  
 Ⓜ—Will not operate Friday, May 30th.  
 g—Light meal for through passengers.  
 Ⓜ—Will not operate Saturday, May 31st.  
 L—Lunch.

n—Lunch for through passengers.  
 Ⓜ—Will operate Friday, May 30th.  
 g—In terms of Local Daylight Time, all flights arrive and depart one hour later than shown.

(EST)—Eastern Standard Time.  
 Light figures (10.40) indicate AM times.  
 Dark figures (10.40) indicate PM times.  
 Times shown in italics (10.40, 10.40) are connecting flights.

ROUTE OF THE FLAGSHIPS

AMERICAN AIRLINES

ALL TIMES SHOWN ARE STANDARD TIMES—ADD 1 HOUR FOR DAYLIGHT TIME







# NEW YORK - CINCINNATI - LOUISVILLE

# WASHINGTON - CHICAGO

ALL FLIGHTS DAILY Unless Otherwise Indicated	561 <sup>Ⓢ</sup> Ex Su	69 <sup>Ⓢ</sup> Ex Su	569 Su Only	593 <sup>Ⓢ</sup> Ex Su	577 AM	165 AM	65 AM	565 PM	67 PM	579 <sup>Ⓢ</sup> PM	61 <sup>Ⓢ</sup> Ex Sa	395 PM	575 <sup>Ⓢ</sup> Ex Sa	71 <sup>Ⓢ</sup> Ex Sa	519 <sup>Ⓢ</sup> Ex Sa
NEW YORK (La Guardia) . . . \$ (EST) Lv	AM	AM	AM	5.20	7.25	L10.05		12.25	12.50	D3.10	PM	3.55	D4.55	PM	8.10
NEW YORK (Idlewild) . . . \$ " Lv															
PHILADELPHIA . . . \$ " Lv				a6.15	-										
WILMINGTON . . . \$ " Lv															
BALTIMORE . . . \$ " Lv					8.43			1.45							
WASHINGTON . . . \$ " Ar				7.03	9.04			2.06	2.05			5.14			
RICHMOND . . . \$ " Lv							s8.55	s11.55	s11.55						s6.25
WASHINGTON . . . \$ " Lv		a7.30	a7.30	7.30	9.16		L11.30	2.30	2.30		D4.30	D5.30		8.00	
ELKINS . . . \$ " Ar					10.15										
ELKINS . . . \$ " Lv					10.25										
PARKERSBURG . . . \$ " Ar					11.05										
MARIETTA . . . \$ " Ar					11.15										
CHARLESTON, W.VA. . . \$ " Ar				8.57	11.46			3.57				6.57			
CHARLESTON, W.VA. . . \$ " Lv				9.10	a11.58			4.10				7.10			
CINCINNATI . . . \$ (EST) Ar	a8.30			10.16	1.04			4.16				8.16	8.10		11.28
CINCINNATI . . . \$ (EST) Ar				10.40	1.20			5.40				8.40	p8.40		
LOUISVILLE . . . \$ (CST) Ar								p6.17				p8.27	p8.27		
INDIANAPOLIS . . . \$ (CST) Ar	8.14			10.24	1.04	p1.04		5.24				8.24	p8.24		
INDIANAPOLIS . . . \$ " Lv	8.25			10.35	1.15			a5.35				8.40			
CHICAGO . . . \$ (CST) Ar	9.22	9.10	9.39	11.32	2.12			6.32	4.10		6.10	9.37		9.40	

# CHICAGO - WASHINGTON

# LOUISVILLE - CINCINNATI - NEW YORK

ALL FLIGHTS DAILY Unless Otherwise Indicated	578 <sup>Ⓢ</sup> Ex Su	162 <sup>Ⓢ</sup> Ex Su	60 <sup>Ⓢ</sup> Ex Su	566 AM	62 <sup>Ⓢ</sup> Ex Sa	562 Sa Only	576 <sup>Ⓢ</sup> PM	164 PM	64 PM	252 <sup>Ⓢ</sup> PM	568 <sup>Ⓢ</sup> PM	66 PM	560 <sup>Ⓢ</sup> Ex Sa	72 <sup>Ⓢ</sup> Ex Sa
CHICAGO . . . \$ (CST) Lv	AM	6.50	B7.15	8.15	L11.15	11.15	1.15		D3.15		4.00	D5.15	6.30	9.00
INDIANAPOLIS . . . \$ " Ar		7.40		9.08			2.08				4.53		7.23	
INDIANAPOLIS . . . \$ (CST) Ar		8.00		9.20			2.20				5.05		7.55	
LOUISVILLE . . . \$ (CST) Lv		p8.06		p8.06			p12.40	3.30		4.40	p4.40			
CINCINNATI . . . \$ (EST) Ar		9.40	The American Statesman	10.57			3.57	5.05	6.15	6.42			9.12	
CINCINNATI . . . \$ " Lv	a7.35	10.05		11.20			4.15	D5.30	D6.30	D7.05			9.30	
CHARLESTON, W.VA. . . \$ " Ar	8.33			12.18			5.23			8.03				
CHARLESTON, W.VA. . . \$ " Lv	8.45			a12.30			D5.25			8.15				
MARIETTA . . . \$ " Ar				1.00										
PARKERSBURG . . . \$ " Lv				1.10										
ELKINS . . . \$ " Ar				1.43										
ELKINS . . . \$ " Lv				1.55										
WASHINGTON . . . \$ " Ar	10.01		10.45	2.46	2.45	2.59	6.41		6.45		9.31	8.45		12.30
RICHMOND . . . \$ " Ar	s1.09		s1.09				s8.09		s8.09					
WASHINGTON . . . \$ " Lv	10.15			3.00			6.55				9.45			
BALTIMORE . . . \$ " Ar														
WILMINGTON . . . \$ " Ar														
PHILADELPHIA . . . \$ " Ar														
NEW YORK (Idlewild) . . . \$ " Ar														
NEW YORK (La Guardia) . . . \$ (EST) Ar	11.25	12.30		4.10			8.05	7.55		9.20	10.55		12.17	

# CONNECTING SERVICE

49	71 <sup>Ⓢ</sup> Ex Sa	395	61 <sup>Ⓢ</sup> Ex Sa	67	565	7-917	55	577	593 <sup>Ⓢ</sup> Ex Su	69 <sup>Ⓢ</sup> Ex Su	561 <sup>Ⓢ</sup> Ex Su	ALL FLIGHTS DAILY Unless Otherwise Indicated Read Down	162 <sup>Ⓢ</sup> Ex Su	566	60 <sup>Ⓢ</sup> Ex Su	62 <sup>Ⓢ</sup> Ex Su	576 <sup>Ⓢ</sup> PM	64	48	568 <sup>Ⓢ</sup> PM	66	918-114	569 <sup>Ⓢ</sup> Ex Sa	72 <sup>Ⓢ</sup> Ex Sa	
PM B1000	8.00	D530	D430	2.30	2.30	D1235	L1130	9.16	7.30	a7.30	AM	Lv WASHINGTON . . . \$ (EST) Ar	AM	2.46	AM	10.45	PM	2.45	6.41	6.45	1.00	PM	9.31	8.45	10.45
	8.40			5.40	a5.35			1.20	10.40	a8.30	Lv CINCINNATI . . . \$ (EST) Ar	PM	10.57	PM	10.45	PM	D357	6.45		9.31	4.53		9.12		
	9.40	9.37	6.10	4.10	6.32		1.10	1.15	10.35	9.22	Lv INDIANAPOLIS . . . \$ (CST) Ar	PM	9.08	PM	B715	L1115	1.15	D315	4.00	4.00	4.00	D515	6.30	9.00	
			A565 Ex Sa	A485	565 Ex Sa		A705	T469	T361	V51	A477	Ar CHICAGO . . . \$ (CST) Lv	PM	6.50	PM	A480 Ex. Su.	A470		A470			D515	A484	6.30	
			7.10	D435	7.10		3.10	4.13	2.30	11.20	Lv CHICAGO . . . \$ (CST) Ar	PM	6.30	PM	9.57	1.10					4.18		9.12	6.25	
			9.36	5.59	9.36		4.34	6.24	4.41	1.35	Ar ST. LOUIS . . . \$ " Lv	PM	4.30	PM	8.15	11.50					2.30		7.23		
							6.24	4.41	1.35	10.00	Ar KANSAS CITY . . . \$ " Lv	PM	4.50	PM								4.00	6.30	9.00	
							1.50	4.00	1.35	9.50	Lv CHICAGO . . . \$ (CST) Ar	PM	5.30	PM	6.30	9.27	11.05				2.25	4.21	6.30	6.00	
							1.50	4.00	1.35	10.00	Ar MILWAUKEE . . . \$ " Lv	PM	6.20	PM	6.30	9.27	11.05				2.25	4.21	6.30	6.00	
							3.55	6.04			Ar MINNEAPOLIS . . . \$ " Lv	PM		PM							3.45			4.25	
							4.35			12.00	Ar OMAHA . . . \$ (CST) Lv	PM		PM											
							4.35			12.35	Ar DENVER . . . \$ (MST) Lv	PM	11.00	PM	1.50										
							9.30			4.30	Ar SALT LAKE CITY . . . \$ (MST) Lv	PM		PM	12.50										
							8.30			7.15	Ar SAN FRANCISCO . . . \$ (PST) Lv	PM	8.45	PM	9.45										
							8.35				Ar PORTLAND . . . \$ " Lv	PM	8.20	PM	7.40										
							9.55				Ar SEATTLE . . . \$ (PST) Lv	PM	7.00	PM	6.25	10.30								8.00	

### EQUIPMENT:

- ▲ DC-6 Flagship.
- DC-6 Airtourist Service.
- All other flights are Convair Flagships.
- AA—American Airlines.
- CAL—Continental Air Lines
- DAL—Delta Air Lines
- NAL—National Airlines

- a—Light meal service.
- A—American Airlines.
- B—Breakfast.
- c—Via connecting AA flight to or from N.Y.

### EXPLANATION OF REFERENCE MARKS PAGES 18-19

- C—Capital Airlines.
- D—Dinner.
- E—Eastern Airlines.
- Ⓢ—Will not operate Friday, May 30th.
- g—Light meal for through passengers.
- b—Light meal for boarding passengers.
- J—Chicago and Southern Air Lines.
- Ⓢ—Will not operate Saturday, May 31st.
- k—Dinner for passengers connecting from Flight 114.
- L—Lunch.
- N—Northwest Airlines.
- p—Via connecting AA flight to or from Cincinnati.
- R—National Airlines.
- s—Via connecting AA flight to or from Washington.
- T—Trans World Airlines.
- U—United Airlines.
- V—Braniff Airways.
- v—Via connecting AA flight to or from Chicago.
- W—Western Air Lines.
- y—Via connecting AA flight to or from Dallas.

- (CST)—Central Standard Time.
- (EST)—Eastern Standard Time.
- (MST)—Mountain Standard Time.
- (PST)—Pacific Standard Time.
- Ⓢ—In terms of Local Daylight Time, all flights arrive and depart one hour later than shown.
- Light figures (10.40) indicate AM times.
- Dark figures (10.40) indicate PM times.
- Times shown in italics (10.40, 10.40) are connecting flights.

ROUTE OF THE FLAGSHIPS

ALL TIMES SHOWN ARE STANDARD TIMES—ADD 1 HOUR FOR DAYLIGHT TIME

AMERICAN AIRLINES







AMERICAN AIRLINES

ROUTE OF THE FLAGSHIPS

AMERICAN AIRLINES

TELEPHONES • TICKET OFFICES • \*GROUND TRANSPORTATION

CITY	RESERVATION	TICKET OFFICES	AIRPORT	MILES	CONVEYANCE	#	TIME	FARE
Akron 8, Ohio	Tyler . . . . . 6-2315	211 Akron Savings & Loan Bldg.	Akron-Canton . . . . .	16 S	Limousine Service . . . . .	45		\$1.75
Albany 7, N. Y.	8-4561	Hotel Ten Eyck . . . . .	Albany . . . . .	9 NW	Pearl Taxi Co. . . . .	35		1.00
Ann Arbor, Mich.	Dial "O" ask for 10330	Airport Terminal . . . . .	Willow Run . . . . .	12 SE	Airport Cab Co. . . . .	25	M	4.00
Atlanta, Ga.	L.Amar . . . . . 3242	87 Forsyth St., N. W.	Municipal . . . . .	8 1/2 SW	Belle Isle Cab Co. . . . .	50		1.15
Baltimore 2, Md.	SARatoga . . . . . 3210	Emerson Hotel . . . . .	Friendship International	8 SW	Limousine Service . . . . .	45		1.15
Battle Creek, Mich.	3-1541	Airport Terminal . . . . .	Kellogg Municipal . . . . .	3 SW	Taxi . . . . .	15		1.00
Beverly Hills, Calif.	959-0658	2503 Wilshire Blvd. . . . .	Los Angeles Int'l . . . . .	13				
Birmingham, Ala.	9-3791	2002 Fifth Ave. N. . . . .	Municipal . . . . .	4 1/2 E	Black & White Cab . . . . .	30		.75
Bisbee, Ariz.	Enterprise . . . . . 1500	Airport Terminal . . . . .	Bisbee/Douglas Int'l . . . . .	22 SE	Limousine Service . . . . .	50		2.30
Boston 10, Mass.	Liberty . . . . . 2-6700	Statler Hotel and 152 Federal St.	Logan International . . . . .	3 E	Taxi. (F) . . . . .	25	K	1.30
Bridgeport, Conn.	7-4467	886 Main Street . . . . .	Municipal . . . . .	4 1/2 E	Taxi . . . . .	20	K	1.50
Bristol Tenn. Va.	60-361	Airport Terminal . . . . .	Tri-City . . . . .	16 1/2 SW	Bristol Airline Trans. Co. . . . .	50		1.50
Brooklyn N. Y.	T.Wining . . . . . 8-5000	200 Livingston St. (Opp. A & S)	See New York . . . . .					
Buffalo 2, N. Y.	MOhawk . . . . . 4242	Hotel Statler Arcade, 150 Franklin St.	Municipal . . . . .	9 E	Limousine Service . . . . .	45		1.15
Burbank, Calif.	Zenith . . . . . 6418	Lockheed Air Terminal . . . . .						
Cambridge, Mass.	Liberty . . . . . 2-6700	See Boston . . . . .	Logan International . . . . .					
Canton, Ohio	North Canton 9-2511	Airport Terminal . . . . .	Akron-Canton . . . . .	8 1/2 NW	Limousine Service . . . . .	30		1.25
Charleston, W. Va.	60-361	Daniel Boone Hotel . . . . .	Kanawha County . . . . .	4 NE	Limousine Service . . . . .	30		.75
Chicago 3, Ill.	FRanklin . . . . . 2-8000	55 E. Monroe St. & Conrad Hilton Hotel	Midway . . . . .	12 SW	Limousine Service . . . . .	1:10		1.25
Cincinnati 2, Ohio	CHerry . . . . . 8140	38 East 4th St. . . . .	Greater Cincinnati . . . . .	12	Limousine Service . . . . .	50		1.25
Cleveland 14, Ohio	OITeard . . . . . 1-3300	Union Commerce Bldg., 923 Euclid Ave.	Hopkins Municipal . . . . .	12 SW	Limousine Service . . . . .	60		1.20
Columbus 15, Ohio	DOuglas . . . . . 2777	Deshler-Wallick Hotel, Broad & High Sts.	Port Columbus . . . . .	9 NE	Limousine Service . . . . .	40		1.20
Corning, N. Y.	6-5331	Airport Terminal . . . . .	Chemung County . . . . .	7 N	Limousine Service . . . . .		R	4.00
Dallas 4, Texas	Riverside . . . . . 6-5331	Bor Hotel, 1404 Commerce St.	Love Field . . . . .	12 1/2 N	Limousine Service . . . . .	45		1.15
Dayton 2, Ohio	MO. 4-4655	Biltmore Hotel, 210 N. Main St.	Municipal . . . . .					
Detroit 26, Mich.	WOODward . . . . . 5-1000	1265 Washington Blvd. at Grand River & General Motors Bldg. Concourse . . . . .	Willow Run . . . . .	32 W	Special Greyhound Coach . . . . .	60		1.50
Douglas, Ariz.	1164	Airport Terminal . . . . .	Bisbee/Douglas Int'l . . . . .	11 N	Limousine Service . . . . .	35		1.25
Elkins, W. Va.	1100	Airport Terminal . . . . .	Municipal . . . . .	8 S	Taxi . . . . .	20		.50
Elmira, N. Y.	3-2108	Airport Terminal . . . . .	Chemung County . . . . .	10 NW	Limousine Service . . . . .	40		1.50
El Paso, Texas	3-4411	Hilton Hotel . . . . .	International . . . . .	7 NE	Limousine Service . . . . .	X	40	1.05
Erie, Pa.	34-101	Airport Terminal . . . . .	Port Erie . . . . .	6 W	Yellow Cab . . . . .	30		.75
Evansville, Ill.	FRanklin . . . . . 2-8000	Carlson Bldg., Orrington & Church	Midway . . . . .	22 N	Limousine Service . . . . .	1:15		2.50
Fort Worth, Texas	Market . . . . . 2181	Texas Hotel, Main & 8th St.	Meacham Field . . . . .	16 N	Yellow Cab . . . . .	40		1.00
Hartford, Conn.	7-5141	723 Main Street . . . . .	Bradley Field . . . . .	14 N	Limousine Service . . . . .	40		1.15
Hollywood 23, Calif.	MAdison . . . . . 4-3195	Howard Roosevelt Hotel . . . . .	Los Angeles Int'l . . . . .	15 S	Airport Transit. Co. . . . .	60		1.25
Holyoke, Mass.	Springfield . . . . . 4-2151	Hotel Kimball, Springfield	Bradley Field . . . . .	21 SW	Den-Mor Cab Co. . . . .	1:05		2.90
Honolulu, T. H.	5-2648	735 Bishop St. . . . .						
Houston 2, Texas	CHarter . . . . . 9361	805 Walker Ave. . . . .	Municipal . . . . .	10 SE	Limousine Service . . . . .	40		1.15
Huntington Park, Cal.	MAdison . . . . . 6-3811	2624 1/2 Saturn Ave. . . . .	Los Angeles Int'l . . . . .	13	Limousine Service . . . . .	45		1.25
Indianapolis, Ind.	FRanklin . . . . . 150	Claypool Hotel, 14 N. Illinois.	Municipal . . . . .	3 SW	Limousine Service . . . . .	45		1.25
Jackson, Mich.	4-3195	Airport Terminal . . . . .	Reynolds Municipal . . . . .	1 1/2 W	Taxi . . . . .	10	K	.60
Johnson City, Tenn.	Tri-City . . . . . 1540	Airport Terminal . . . . .	Tri-City . . . . .	15 NW	Johnson City Air. Trans. . . . .	50		1.50
Joplin, Mo.	7-0855	Airport Terminal . . . . .	Municipal . . . . .	4 N	Limousine Service . . . . .	20		.75
Kalamazoo, Mich.	5-1655	Airport Terminal . . . . .	Kellogg Municipal . . . . .	20 SE	Yellow Cab Co. . . . .	35		1.00
Kingsport, Tenn.	Tri-City . . . . . 1540	Airport Terminal . . . . .	Tri-City . . . . .	15 NE	Kingsport Airline Trans. . . . .	50		1.50
Knoxville, Tenn.	4-3611	Farragut Hotel, 530 So. Gay St.	Municipal . . . . .	12 SW	Limousine Service . . . . .	50		1.25
Little Rock, Ark.	4-0395	103 E. Capitol Ave. . . . .						
London W1, England	Mayfair . . . . . 5518	Slough Estates House, 16 Berkeley St.						
Long Beach, Calif.	704414	Wilton Hotel, 210 E. Ocean Blvd.	Los Angeles Int'l . . . . .					
Los Angeles 14, Calif.	MAdison . . . . . 6-3811	621 W. 6th St. & Beverly Wilshire Hotel	Los Angeles Int'l . . . . .	14 SW	Airpor Transit. . . . .	60		1.25
Louisville 2, Ky.	ATwood . . . . . 1633	319 West Walnut Street . . . . .	Standiford Field . . . . .	6 S	Yellow Cab Co. . . . .	30	P	1.00
Lynchburg, Va.	6-2637	Airport Terminal . . . . .	Preston Glenn . . . . .	9 SW	Southern Cab Co. . . . .	30		1.00
Memphis 3, Tenn.	9-3311	Peabody Hotel, 145 Union Ave.	Municipal . . . . .	9 1/2 SE	Limousine Service . . . . .	40		1.00
Mexico City, D. F. Mex.	(Mexicana) 435-79-35	Avenida Ejido No. 7 . . . . .	Central . . . . .	3 1/2 S	Limousine Service . . . . .	1:30		.46
Miami, Fla.	9-1992	1640 Du Pont Bldg. . . . .	Miami International . . . . .	7 W	Red Top Aero Car . . . . .	45		.85
Midland, Texas	2800	Airport Terminal . . . . .	Midland-Odessa . . . . .	10 W	Limousine Service . . . . .	20		1.00
Milwaukee 2, Wis.	BRoadway . . . . . 2-8870	110 E. Wisconsin Bldg., Room 311	General Mitchel . . . . .	6 SE	Limousine Service . . . . .	50		.75
Monterrey, N. L. Mex.	42-6321	Colony Hotel . . . . .	del Norte . . . . .	10 S	Limousine Service . . . . .	40		1.00
Nashville 3, Tenn.	42-6321	Hermitage Hotel, 239 6th Ave. N.	Municipal . . . . .	8 1/2 SE	Yellow Cab Co. . . . .	40	Z	1.25
Newark 2, N. J.	2-8570	12 Commerce Street . . . . .						
New Haven, Conn.	Hobart . . . . . 7-1667	Hotel Taft, College & Chapel Sts.	Municipal . . . . .	4 1/2 E	Yellow Cab Co. . . . .	20	K	1.60
New Orleans, La.	Canal . . . . . 5410	St. Charles Hotel . . . . .	Moisant International . . . . .	11 NW	Yellow Cab Co. . . . .	50		1.25
New York 17, N. Y.	TWining . . . . . 8-5000	(Airlines Terminal, 80 E. 42nd St. . . . . Astor Hotel Lobby . . . . . Hotel New Yorker Lobby . . . . . Rokefeller Center, 18 W. 49th St. . . . . 120 Broadway . . . . . 200 Livingston St. (Opp. A&S) Bklyn	LA Guardia . . . . .	9 1/2 E	Carey Transportation Inc. (C)	45		1.25
			N. Y. International . . . . .	16 1/2 SE			55	
Niagara Falls, N. Y.	Enterprise . . . . . 9000	Airport Terminal . . . . .	Municipal . . . . .	5 1/2 NE	Niagara Sightseeing, Inc. . . . .	35		1.00
Oakland, Calif.	Enterprise . . . . . 1-0718	1420 Broadway . . . . .	Municipal . . . . .	9 SE	Limousine Service . . . . .	50		1.00
Odessa, Texas	4164	Airport Terminal . . . . .	Midland-Odessa . . . . .	10 E	Limousine Service . . . . .	25		1.25
Oklahoma City, Okla.	7-0541	111 Northwest First St. . . . .	Municipal . . . . .	9 SW	Limousine Service . . . . .	40		1.25
Parkersburg, W. Va.	75-541	Airport Terminal . . . . .	Wood County . . . . .	8 N	Weser Cab Co. . . . .	40		1.00
Pasadena, Calif.	3-2197	625 E. Colorado Blvd. . . . .	Los Angeles Int'l . . . . .					
Peoria 5, Ill.	3-4441	Airport Terminal . . . . .	Municipal . . . . .	6 1/2 SW	White Star Motor Coach . . . . .	15		1.00
Philadelphia 9, Pa.	BEIgrade . . . . . 6-1000	1423 Walnut St. . . . .	Philadelphia Int'l . . . . .	7 1/2 SW	Limousine Service . . . . .	50		1.10
Phoenix, Ariz.	2-1721	18 East Adams St. . . . .	Sky Harbor . . . . .	3 1/2 SE	Limousine Service . . . . .	35		.75
Providence, R. I.	UNion . . . . . 1-1200	Turks Head Bldg., 76 Westminster St.	Rhode Island State . . . . .	6 1/2 S	Airport Coach Service. (Q) . . . . .	35		.86
Richmond, Va.	97-4111	John Marshall Hotel . . . . .	Byrd Field . . . . .	8 SE	Limousine Service . . . . .	45		1.15
Roanoke, Va.	3-834	Airport Terminal . . . . .	Woodman Field . . . . .	8 E	Yellow Cab Co. . . . .	35		.85
Rochester 4, N. Y.	8000	Seneca Hotel Lobby . . . . .	Municipal . . . . .	6 NW	Limousine Service . . . . .	35		.85
St. Louis 1, Mo.	DElmar . . . . . 5500	Jefferson Hotel . . . . .	Lambert Municipal . . . . .	15 NW	Limousine Service . . . . .	60		1.25
San Antonio 6, Texas	TRavis . . . . . 2691	310 N. St. Mary's St.—Gunter Hotel . . . . .	Municipal . . . . .	8 1/2 N	Yellow Cab . . . . .	R	40	1.00
San Diego 1, Calif.	WOODcrest . . . . . 2111	U.S. Grant Hotel Arcade, 1028—4th Ave	Lindbergh . . . . .	1 1/2 NW	Taxi . . . . .	20	K	.80
San Francisco 8, Calif.	GArdner . . . . . 1-8336	231 Montgomery St. & 250 Stockton St.	International . . . . .	13 SE	Airport Limousine . . . . .	60		1.25
Schenectady, N. Y.	Schenectady . . . . . 6-2381	Van Curler Hotel . . . . .	Albany . . . . .	8 E	Public Taxi Co. . . . .	40		1.00
Scranton, Pa.	5297	Hotel Casey . . . . .	Wilkes-Barre/Scranton . . . . .	8 SE	Airport Transport . . . . .	30		1.30
South Bend 24, Ind.	3-1101	Airport Terminal . . . . .	Bendix . . . . .	3 1/2 NW	Indiana Cab Co. . . . .	15	N	1.00
Springfield, Ill.	9804	Airport Terminal . . . . .	Capital . . . . .	4 NW	Lincoln Cab Co. . . . .	25		.90
Springfield 3, Mass.	4-2151	Hotel Kimball . . . . .	Bradley Field . . . . .	14 SW	Den-Mor Cab Co. . . . .	45		1.15
Springfield, Mo.	4-1871	Airport Terminal . . . . .	Municipal . . . . .	7 NW	Black & White Cab Co. . . . .	30		1.00
Syracuse 2, N. Y.	74-3311	Onondaga Hotel Lobby . . . . .	Hancock Field . . . . .	16 NE	Limousine Service . . . . .	35		1.00
Tampa, Fla.	2-345	217 Franklin St. . . . .	Dreyfus . . . . .	4 S	Red Top Cab . . . . .	25		.90
Toxarkana, Ark.	2-4157	Airport Terminal . . . . .	Municipal . . . . .	4 NE	Taxi . . . . .	25	K	.95
Toronto 1, Ont., Canada	EMpire . . . . . 6-8881	22 King St., West . . . . .	Malton . . . . .	18 1/2 NW	Limousine Service. (T) . . . . .	70		1.25
Troy, N. Y.	ARsenal . . . . . 3-3461	Hotel Ten Eyck, Albany . . . . .	Albany . . . . .	7 W	Strand Taxi Co. . . . .	35		1.50
Tucson, Ariz.	2-6411	72 N. Stone Ave., Pioneer Hotel . . . . .	Municipal . . . . .	7 1/2 S	Limousine Service . . . . .	40		1.25
Tulsa 3, Okla.	3-8173	507 South Boston . . . . .	Municipal . . . . .	7 NE	Limousine Service . . . . .	40		1.15
Washington 5, D. C.	EXchange . . . . . 2-345	Statler Hotel and Willard Hotel . . . . .	Washington National . . . . .	4 S	Limousine Service . . . . .	30		.90
White Plains, N. Y.	White Plains . . . . . 6-5603	Airport Terminal . . . . .	Westchester County . . . . .	7 NE	Broadway Taxi . . . . .	30		1.15
White Sul. Spgs., W. Va.	Wilkes-Barre . . . . . 2-2118	See Charleston, W. Va. & Roanoke, Va.	Wilkes-Barre/Scranton . . . . .	12 NW	Airport Transport . . . . .	35		1.30
Wilkes-Barre, Pa.	New Castle . . . . . 4191	Airport Terminal . . . . .	New Castle County . . . . .	6 1/2 SW	Airport Limousine . . . . .	30		1.15
Wilmington, Del.	Detroit . . . . . 5-1000	Norton Palmer Hotel . . . . .	Willow Run . . . . .					

\*—Independently operated, recommended for reliability. #—Minutes before plane departure when passengers should leave downtown area in order to allow time for driving to the airport and formalities before boarding plane. —Taxi fares apply generally from downtown areas only. For departure point of conveyance call number shown at left. C—Limousine leave Airlines Terminal, 80 E. 42nd St. F—Other transportation available—Please check American Airlines Ticket Office. K—Approximate—pay meter. M—Two or more passengers \$2.00 each. N—Two or more passengers \$0.50 each. P—\$1.00 for one; two or more \$0.75. Q—Airport Coach leaves Sheraton Biltmore Hotel only. R—International passengers allow one hour additional. T—Limousine leaves from Hotels King Edward and Royal York only. X—International passengers allow 20 minutes additional. Y—\$1.50 each for two or more passengers. Z—Two or more passengers \$1.00 each. —Also Ericsson 18-09-07.

RENT A CAR from AVIS or HERTZ car rental systems when you reach your destination and enjoy full travel freedom



# EXAMPLES OF ONE-WAY PASSENGER FARES

5% DISCOUNT ON ROUND TRIP FARES, EXCEPT AIRTOURIST SERVICES. CONSULT AMERICAN AIRLINES FOR FARES NOT LISTED HEREIN.

AND	BETWEEN	Boston, Mass.	Buffalo, N. Y.	Chicago, Ill.	Cincinnati, Ohio	Dallas-Ft. Worth, Tex.	Detroit, Mich.	El Paso, Tex.	Los Angeles, Calif.	Memphis, Tenn.	Mexico City, D. F.	Monterrey, N. L.	Nashville, Tenn.	New York/White Plains	Oklahoma City, Okla.	Philadelphia, Pa.	Phoenix, Ariz.	St. Louis, Mo.	San Diego, Calif.	San Francisco, Calif.	Tulsa, Okla.	Washington, D. C.	
Acapulco, Mexico		162.40	144.30	121.90	118.40	66.60	132.50	69.30	106.90	91.10	122.50	122.50	103.40	153.30	79.70	147.40	92.60	106.40	106.90	128.00	84.60	139.90	
Axon, Ohio		34.80	14.90		15.00	69.95	69.95		94.80	133.75	42.30	97.80	29.95	26.10	59.95	114.80	31.30	133.75	133.75	133.75	53.10		
Albany, N. Y.		10.10	10.90	45.10	37.35	39.00	30.60	119.90	158.85	64.65	144.40	119.20	62.90	9.40	85.05	15.25	139.90	56.40	56.40	56.40	78.20	22.80	
Atlanta, Ga.		67.20	49.35	41.10	25.40	50.40		84.55	126.70		97.10	77.50	51.10	52.40	45.25	107.75		126.70	138.75	45.55	37.70		
Baltimore, Md.		23.05	30.30	37.80	29.40	78.10		109.90	149.35	52.95	133.50	108.30	40.60	11.90	75.05	6.05	130.40	46.40	149.35	149.35	68.20	3.50	
Battle Creek, Mich.		46.85	21.85	10.00		65.30	8.15	89.05	123.75		122.00	95.50		38.25	54.20		104.80	25.55	123.75	123.75	47.35		
Birmingham, Ala.			53.35		28.10	42.60		76.75	118.90		88.80	69.20		61.40	45.10		99.95		118.90	135.35	38.25	43.15	
Boston, Mass.			26.00	53.80	46.45	39.10	39.70	128.60	167.55	73.75	153.50	122.30		12.15	93.75	18.00	148.60	65.10	167.55	167.55	86.90	25.55	
Bridgport, Conn.		9.55	21.20		15.25	40.25		91.90	132.80	109.75	66.75	147.00		54.40	35.90	9.75	124.80	69.30	161.75	161.75	81.10	17.30	
Bristol, Tenn.-Va.		47.05			56.60			90.10	137.50	28.70	109.50	86.80		16.20	35.90	65.25	133.50		132.25	140.55	48.40	22.50	
Buffalo, N. Y.		26.00		29.95	26.90	81.25	14.70	105.00	143.70	54.20	135.40	109.70		41.85	19.40	70.15	25.25	124.75	143.70	143.70	63.30	32.80	
Charleston, W. Va.		41.60		27.15	10.55	64.60		93.95	133.40	36.95	127.70	101.60		24.50	30.35	59.10	24.50	114.45	133.40	138.00	52.25	16.95	
Chicago, Ill.		53.80	29.95		17.60	56.30	16.25	80.05	114.75		113.00	86.50		27.30	45.10	45.20	41.55	95.80	166.55	144.75	38.35	37.80	
Cincinnati, Ohio		46.45	26.90	17.60		55.95		84.40	123.85	28.30	109.50	86.20		15.95	37.35	49.55	34.05	104.90	123.85	128.45	42.45	26.50	
Cleveland, Ohio		34.80	12.90		15.00	69.95		94.80	133.75	42.30	123.50	97.80		29.95	26.10	59.95		31.30	133.75	133.75	53.10		
Columbus, Ohio		40.55	19.95		8.85	63.80		88.90	129.35	36.15	117.30	94.00		23.80	31.45	55.05		110.40	129.35	132.80	48.20		
Dallas, Tex.		97.10	81.25	66.30		67.55		35.15	77.30	28.65	57.70	31.20		41.00	89.00	12.10		83.15	58.35	77.30	78.10		
Dayton, Ohio		44.90	23.40		64.60	59.45		85.55	125.00	31.80	113.00	89.70		19.45	35.80	50.70		106.05	125.00	128.45	43.85	26.50	
Detroit, Mich.		39.70	14.70		15.25	67.55		91.30	130.80	123.60	97.80			31.10	56.45		111.05	27.80	130.00	130.00	49.60		
Douglas, Ariz.		140.35	116.25	91.80	96.15	103.05		12.75	26.25	74.55	72.20	45.50		86.25	153.95	47.60	126.70	13.45	32.40	32.40	66.40	42.70	
El Paso, Tex.		128.60	105.00	80.05	84.40	35.15	21.30	100.70	140.15	62.80	60.40	33.70		74.50	119.90	35.85	114.95	24.25	64.50	43.15	67.15	109.90	
Elkins, W. Va.		24.65		33.90	37.30	71.30		100.70	140.15	62.80	60.40	33.70		74.50	119.90	35.85	114.95	24.25	64.50	43.15	67.15	109.90	
Erma, Pa.		34.85	9.20	38.40	33.05	88.00	92.90	113.20	151.90	60.35	141.60	71.90		48.00	13.45	78.35	19.30	132.95	49.70	151.90	151.90	26.85	
Fort Worth, Tex.		31.85	6.85		21.05	76.00		100.85	139.80	48.35	129.50	103.80		36.00	25.25	66.00		120.85	37.35	139.80	139.80	59.15	
Guatemala City, Guat.		98.10	81.25	56.30	55.95	3.50	67.55	35.15	77.30	28.65	57.70	31.20		41.00	89.00	12.10		83.15	58.35	77.30	78.10		
Hartford, Conn.		210.50	192.40	170.00	166.50	114.70	180.60	117.40	155.00	139.20	57.00			151.50	201.40	125.80	195.50	140.60	154.60	155.00	176.10	132.70	
Honolulu, T. H.		6.45	21.20	49.10	41.65	93.30	34.90	123.90	162.85	68.95	148.70	123.50		56.60	6.70	89.00	12.55	143.90	60.40	162.85	162.85	82.20	
Houston, Tex.		326.60	302.70	273.80	282.90	236.30	289.00	206.00	160.00	264.00				275.70	317.90	237.00	313.40	182.80	263.00	166.80	160.00	243.90	308.40
Indianapolis, Ind.		107.90	88.35	67.00	62.45	76.55	75.55	44.05	90.00					42.25			91.50	67.25	62.05	86.20	110.20	30.25	
Jackson, Mich.		43.65	18.65	13.20		67.55	4.95	91.30	126.95		107.50	83.50		35.05	56.45		108.00	27.80	126.95	126.95	49.60	6.90	
Jacksonville, Fla.		80.60	67.00	32.05		43.30		71.90	107.15		123.60	97.80		66.95	123.20		16.50		140.15	144.75	59.00	10.30	
Knoxville, Tenn.		53.25			50.40			83.90	126.05	22.75	103.00	80.60		10.40	42.10	49.05	36.25	107.10	126.05	134.35	42.20	28.70	
Little Rock, Ark.		81.80	62.25		36.35	20.60		54.75	96.90	9.05	74.10	50.80		21.40	71.90		66.05	77.95	96.90	112.20	58.50		
Los Angeles, Calif.		167.55	143.70	114.75	123.85	77.30	130.00	46.95	104.95	104.95	98.00	79.60		11.65	158.85	78.00	154.40	23.75	103.95	7.75	84.85	149.35	
Louisville, Ky.		52.00	32.45	17.30	6.55	60.40		80.90	120.35	72.55	103.90	80.60		10.40	42.90	46.05	38.30	101.40	120.35	124.95	39.20	31.15	
Lynchburg, Va.		35.30			17.30	68.35		101.85	144.00	40.70	120.60	61.60		28.35	24.15	67.00	18.30	125.05	144.00	149.35	60.15	10.75	
Memphis, Tenn.		73.75	54.20		28.30	28.65		62.80	104.95		82.20	58.90		13.35	63.85		58.00	86.00	104.95	120.25	50.45		
Mexico City, D. F.		153.50	135.40	113.00	109.50	57.70	123.60	60.40	98.00	82.20				94.50	144.40	68.60	138.50	83.60	97.60	98.00	119.10	131.00	
Miami, Fla.		87.85	64.50		76.50	109.05		109.05	152.80		47.55			76.70	68.95		70.85	132.25	151.20	173.40	80.00		
Midland, Tex.		117.00	98.30	73.35	74.85	19.90	84.60	16.25	62.20	47.55				59.90	101.90	29.15	102.05	39.45	57.80	58.40	82.40	36.00	
Milwaukee, Wis.		53.00	29.95	5.95	22.55	61.25	15.25	85.00	114.75	67.15	118.00	91.50		71.20	119.20	42.20	113.40	56.90	71.00	75.90	99.90	49.20	
Monterrey, N. L.		128.30	109.70	86.50	82.00	31.20	97.80	33.70	79.60	58.90				71.20	119.20	42.20	113.40	56.90	71.00	75.90	99.90	49.20	
Nashville, Tenn.		61.40	41.85	27.30	15.95	41.00		74.50	116.65	13.35	94.50	71.20		51.50	39.65	45.65	97.70		116.65	124.95	32.80	38.10	
New Haven, Conn.		8.60	21.20	48.95	41.20	92.85	34.90	123.75	162.70	63.70	148.20	123.10		55.35	4.85	88.90	10.40	143.70	60.25	162.70	82.05	18.25	
New Orleans, La.		88.50	74.15	55.75	48.90		63.30	64.05	107.80		68.00	61.70		37.50	77.35	128.40	71.50	87.25	106.20	128.40		63.95	
New York, N. Y.		12.15	19.40	45.10	37.35	89.00	31.10	119.90	158.85	63.85	144.40	119.20		51.50		85.05	6.85	139.90	56.40	158.85	78.20	14.40	
Niagara Falls, N. Y.		26.00	3.50	29.95	26.90	81.25	14.70	105.00	143.70	54.20	135.40	109.70		41.85	19.40	70.15	25.25	124.75	41.60	143.70	143.70	63.30	
Oakland, Calif.		167.55	143.70	114.75	123.85	77.30	130.00	46.95	104.95	104.95	98.00	79.60		11.65	158.85	78.00	154.40	23.75	103.95	7.75	84.85	149.35	
Oklahoma City, Okla.		93.75	70.15	45.20	49.55	12.10	56.45	35.85	78.00		68.80	42.30		39.65	85.05		80.10	59.05	29.65	78.00	70.10	75.05	
Parkersburg, W. Va.		41.50	37.80	28.10	11.60	66.45		94.90	134.35	38.80	120.00	96.70		26.45	30.35	60.05	24.50	115.40	13				