



*They Guide Our Destiny*



*They Guide Our Destiny*

**WHO DIRECTS TCU?**

IN THE ORGANIZATIONAL pattern of every substantial institution, whether it be an industrial corporation, a bank, or a university, is a group of people called **the Board of Trustees**. They are the ones who, in the final analysis, guide the destiny of the institution.

A recent study of 44 leading institutions of higher education made for the **Reader's Digest** by Dr. Paul H. Davis concludes that, without exception, "Exceptional colleges either have, or have had, exceptional trustees."

Through the years, TCU has had a Board of Trustees surpassed by none in devotion and in character. They have given of their time and resources to see that TCU takes its place among the most substantial universities of the nation.

The qualifications are so high that only about three out of one thousand adults in our nation are college or university trustees. In describing the trustee, Dr. Francis Pray, when Vice President for the Council for Financial Aid to Education, wrote:

**"The ideal trustee is a donor, a procurer of financial support from others, an ambassador and sponsor of the institution, and a significant resource in counsel, guidance and advice."** The hopes of TCU for the future, like its record of the past, depend upon men and women who meet this description.

**WHAT DO TRUSTEES DO?**

**1. They set the policy of the University.**

While the chancellor and his administrative associates recommend to the trustees, in the last analysis it is the trustees who set the policy.

**2. They direct the future planning and destiny of the University.**

They supplement the planning of the Executive Committee by critical review in executive sessions and offer their personal critique and counsel in private conferences with the officers of the University.

**3. They speak for TCU.**

They are sponsors of the University as it goes to the public seeking students and financial support, and as it seeks to increase its area of service to the nation.

**4. They furnish much of the resources that sustain the University.**

Every trustee of TCU or the firm he represents, and in many cases both, have made a financial commitment to the University.

Some of the trustees have written the University into their wills.

The largest single bequest ever left to the University was left by the late Milton Daniel, a trustee and, for several years before his death, chairman of the board.

**THE TRUSTEES OF TEXAS CHRISTIAN UNIVERSITY**

BY CHARTER, the Board of Trustees of TCU consists of not less than twenty-four, nor more than fifty members with a simple majority to be members of the Christian Church (Disciples of Christ). Confirmation of the election of new trustees is made by the Texas Association of Christian Churches meeting in annual assembly.

**Honorary** board members are those persons who have rendered exceptional service or aid to the University. In addition, the Board of Trustees from time to time elects persons as **Advisory** members in order to receive their advice and counsel.

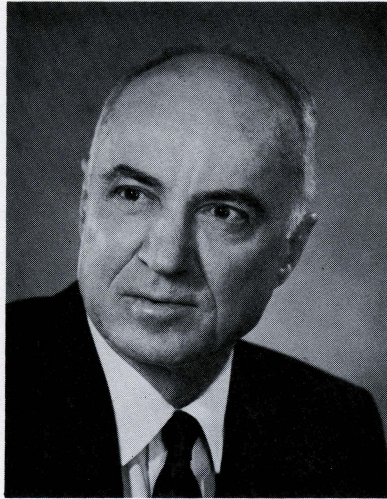
**TCU proudly presents its trustees,  
who continue to guide it  
toward excellence and greatness.**



James M. Moudy

CHANCELLOR

Chancellor, TCU, since 1965, and Professor of Religion; other TCU positions: executive vice chancellor, 1964-65, vice chancellor for academic affairs, 1962-64, dean of Graduate School, 1957-62; dean of instruction, Atlantic Christian College, 1953-57; ordained minister of Christian Church (Disciples of Christ); moderator-elect of General Assembly, Christian Church; past president, Texas Council of Church-Related Colleges; past chairman, Board of Higher Education, Disciples of Christ; director, 1969 International Science Fair, Southwest Center for Advanced Studies, Fort Worth Chamber of Commerce, Rotary Club, University State Bank, Pioneer American Insurance Co.; member, Philosophical Society of Texas, Newcomen Society in North America, Phi Beta Kappa, and numerous organizations; member, University Christian Church; B.A., TCU, 1943; B.D., Brite Divinity School, TCU, 1949; Ph.D., Duke University, 1953; honorary Doctor of Laws degree, Atlantic Christian College, 1964.



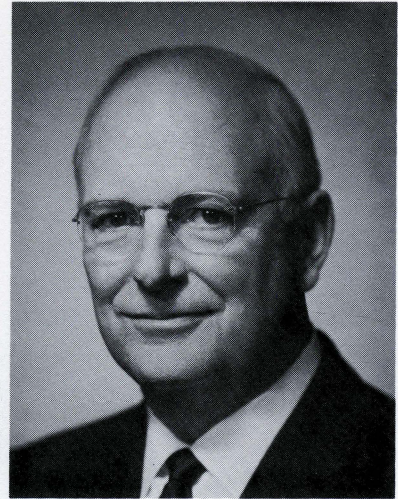
Lorin A. Boswell

Since 1955

Fort Worth

CHAIRMAN OF THE BOARD

*Investments*. Honorary Board Chairman, Boswell Dairies; chairman emeritus, Van Cliburn International Quadrennial Piano Competition Foundation in 1966 and chairman in 1962; received citation from National Conference of Christians and Jews, 1955; member, Alpha Chi scholarship society, Newcomen Society in North America, Phi Kappa Sigma, Masons, Moslah Temple Shrine, Sons of American Revolution, Exchange Club, Kiwanis; member of University Christian Church, Fort Worth, and on Board of Trustees, 1960-63; received TCU Distinguished Alumnus Award, 1965, and Valuable Alumnus Award, 1956; *Who's Who in America*, B.A., TCU, 1937; honorary Doctor of Laws degree, TCU, 1967.



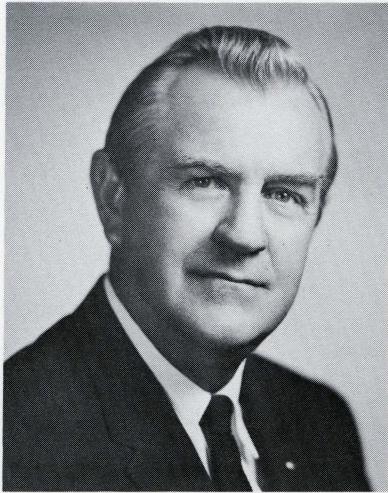
M. J. Neeley

Since 1947

Fort Worth

VICE CHAIRMAN OF THE BOARD

*Investments*. President, M. J. Neeley & Co., Inc.; director, Continental Life Insurance Co., Fort Worth Savings & Loan, University State Bank, Fort Worth Steel & Machinery; founding president, Truck-Trailer Manufacturing Association; board member, YMCA, Texas Boys Choir, Tarrant County United Fund; member, Newcomen Society in North America, Rotary, Exchange Club, Delta Sigma Pi, Beta Gamma Sigma; received National Conference of Christians and Jews Brotherhood Award, 1965, B'nai B'rith Civic Achievement Award, 1966, Rotary Bill Todd Award, 1967; past board chairman, University Christian Church, Fort Worth; B.S., Texas A&M University, 1922; honorary Doctor of Laws degree, TCU, 1967.



Carlos C. Ashley

Since 1949 Llano  
*Attorney, Ranching, Land Developing.* District Attorney, 33rd Judicial District of Texas, 1935-44 and 1961-68; president, District and County Attorneys Association of Texas, 1942, Hill County Bar Association, 1958; Poet Laureate of Texas, 1949-50; State Senator, 1949-58; chairman, State Board of Control of Texas, 1946-47; first Assistant Attorney General of Texas, 1944-46; Mason, Shriner; member, First Christian Church, Llano, Lions; B.A., TCU, 1926; LL.B., Cumberland University, 1930.



Earle B. Barnes

Since 1959 Midland, Mich.  
*Chemicals.* Director of Manufacturing and Engineering, Dow Chemical Co.; member, American Chemical Society, American Institute of Chemical Engineers, Alpha Chi scholarship society; Outstanding Citizen, Brazosport Chamber of Commerce, 1964; member, Board of Directors, TCU Research Foundation; member, Presbyterian Church; B.A., TCU, 1938; M.A., University of Nebraska, 1940; honorary Doctor of Science degree, TCU, 1962.



Theodore P. Beasley

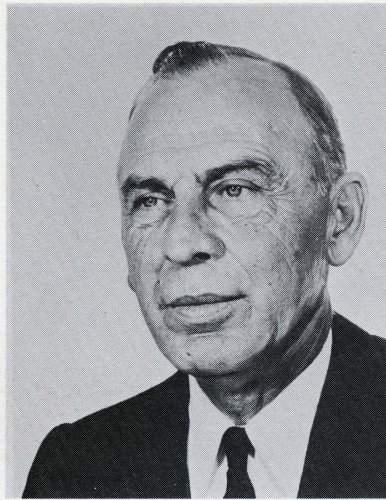
Since 1954 Dallas  
*Insurance.* Chairman of Board and Chief Executive Officer, Republic National Life Insurance Co.; member, Board of Trustees, Mercantile National Bank, Southwest Title Insurance Co., Oak Cliff Savings and Loan Association, National City Christian Church Corp., Washington, D.C.; member, Board of Directors, TCU Research Foundation; vice chairman, Board of Trustees, George Williams College, Chicago; active in insurance associations; former director, Dallas Community Chest; past chairman, Dallas Cancer Fund Drive, Dallas County Muscular Dystrophy Association Fund Campaign; past member, Board of Directors, Dallas Heart Association; member, Dallas Citizens Council, Greater Dallas Council of Churches, Newcomen Society in North America; active in YMCA work; recipient of Lay Churchman of the Year Award of Religious Heritage of America, Inc., 1952; received citation, National Conference of Christians and Jews, 1965; Mason, Shriner; member, Kiwanis; honorary Doctor of Laws degree, TCU, 1968.



S. Brachman

Since 1950 Fort Worth

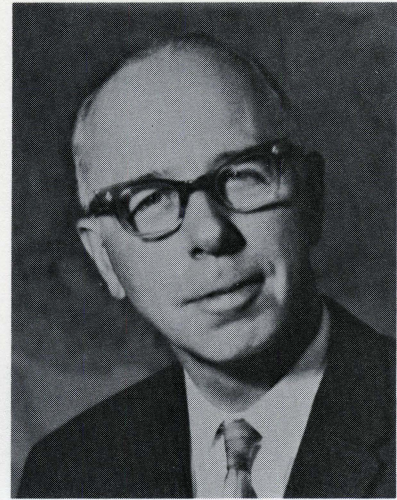
*Oil, Insurance.* President, Producers Supply and Tool Co.; Chairman of Board, Pioneer American Insurance Co.; Vice President and Treasurer, Northwest Oil Co.; served on boards of Union of American Hebrew Congregation, Council of Jewish Federations and Welfare Funds, United Fund, Chamber of Commerce, Fort Worth Progress; received citation from National Conference of Christians and Jews, 1953; member, Beth El and Ahavath Sholom congregations, Fort Worth; member, Phi Beta Kappa; B.A., Marietta College, 1918; Honorary Doctor of Laws degree, TCU, 1968; honorary member TCU Alumni Association.



Andrew A. Bradford

Since 1951 Midland

*Manufacturing.* President, Industrial Manufacturing Co., Sweetwater; owner, Bradford Oil Co., Midland; member, Christian Church (Disciples of Christ), Midland Chamber of Commerce, Midland Development Board, Board of Governors Midland Memorial Hospital Foundation; alumnus, TCU.



Sterling W. Brown

Since 1966 New York

*Ministry.* President, National Conference of Christians and Jews; ordained minister, Christian Church (Disciples of Christ); chairman, department of religion, Drake University, 1940-43; named general director of NCCJ in 1949 and president in 1965; served in West Germany, 1947-49, as adviser on inter-group relations to Gen. Lucius D. Clay; chairman, Religious Affairs Panel, 1949-55, advising U.S. State Department on religious affairs in occupied countries; author; received Four Chaplains Award in Philadelphia, 1966; member Park Ave. Christian Church, New York; B.A., TCU, 1930; B.D., TCU (Brite Divinity School), 1932; Ph.D., University of Chicago, 1934; honorary Doctor of Laws degree, Eureka College, 1965, and TCU, 1966.

## Board of Trustees

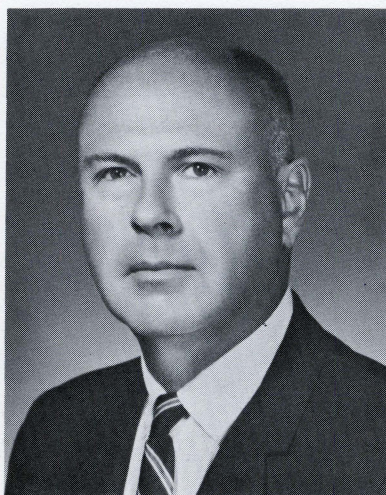


**Robert G. Carr**

Since 1949

San Angelo

*Oil.* Formerly associated with Producers Oil Co. (now Texas Co.); former head, Land, Lease & Scouting Department, Humble Oil & Refining Co., Houston; partner, Preston G. Northrup, 1926-50; officer, U.S. Air Force, WWI, WWII; trustee, educational institutions in Fort Worth and San Angelo; received Silver Beaver Award, Boy Scouts of America; active, San Angelo Chamber of Commerce, Lakeview Tornado Disaster Relief Commission, and other civic, youth, educational and religious organizations; member, First Christian Church, San Angelo; provided funds for construction of Robert Carr Chapel, TCU, named in his honor; alumnus, Kentucky Wesleyan College; honorary Doctor of Laws degree, TCU, 1954, at dedication of Religion Center.

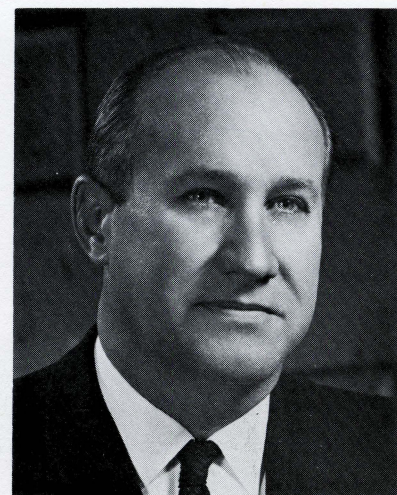


**Amon G. Carter, Jr.**

Since 1966

Fort Worth

*Publisher.* President and Publisher, Fort Worth Star-Telegram; director, American Airlines; chairman, Executive Committee, Trinity Improvement Association; trustee, National Cowboy Hall of Fame; Chairman of Board, Southwestern Exposition and Fat Stock Show, Fort Worth Zoological Association; director, West Texas Chamber of Commerce; president, Fort Worth YMCA, 1958-64; received B'nai B'rith Civic Achievement Award, 1959; Outstanding Salesman of Year, 1961; member, First Methodist Church, Fort Worth Sales and Marketing Executives Club, Kappa Sigma; B.B.A., University of Texas, 1946; honorary Doctor of Laws degree, Texas Wesleyan College, 1966.

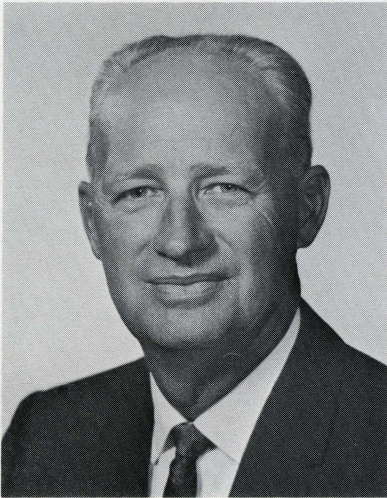


**Lester Clark**

Since 1956

Breckenridge

*Oil, Ranching.* Chairman of Board, Petroleum Corporation of Texas; member, Texas House of Representatives, 1938-43; member of board, Lamar State College of Technology, 1949-55; past director, Independent Petroleum Association of America, Texas Independent Producers and Royalty Owners Association; past vice president, Texas Mid-Continent Oil and Gas Association; past president, West Central Texas Oil and Gas Association; Board of Directors, Breckenridge YMCA; past president, Chamber of Commerce, Jaycees; member, Comanche Trail Council Boy Scouts of America, Phi Gamma Mu scholarship society, Kappa Alpha; received Breckenridge Chamber of Commerce Outstanding Citizen Award, 1961, and Distinguished Citizen Award, 1965 received Governor's Texas Citizen Aide Award, 1967; B.A., Southwestern University, 1935.



**Bryant M. Collins**

Since 1960

Austin

*Construction.* President, Collins Construction Co.; president, Associated General Contractors, National Bituminous Concrete Association; member, Texas State Bar Association, Travis County Bar Association; past chairman of board and member, University Christian Church, Austin; A.B., TCU, 1934; alumnus, University of Texas Law School.

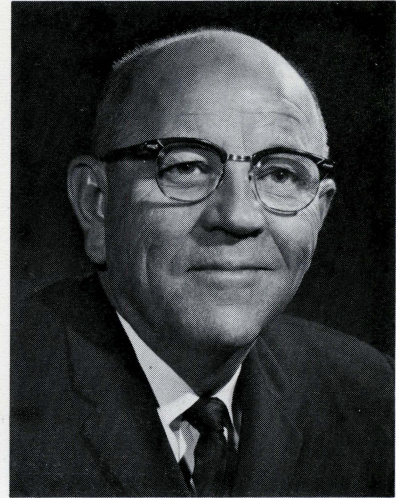


**Earl E. Combest**

Since 1966

Dallas

*Investments.* Co-owner, East Texas Development Co., Ltd.; director, Great American Reserve Corporation, Great American Reserve Insurance Co., Great American of Dallas Fire and Casualty Co., Great American of Dallas Insurance Co., Home Mortgage and Investment Co., Citizens National Bank; member until retirement in 1965 of many insurance organizations and Mortgage Bankers Association; board member, East Dallas Christian Church; alumnus, TCU.



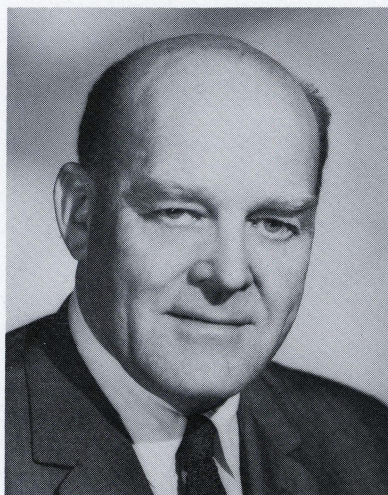
**William C. Conner**

Since 1962

Fort Worth

*Pharmaceuticals, Product Engineering.* President and Chairman of Board, Alcon Laboratories, Inc.; director, Century Life Insurance Co., Conrad Berens Eye Foundation, Inc., Fort Worth National Bank, TCU Research Foundation, Chamber of Commerce; trustee, Research to Prevent Blindness, Inc., National Fund for Graduate Nursing Education; chairman, Liaison Committee, Pan American Association of Ophthalmology; member, American Pharmaceutical Association, Texas Manufacturers Association, National Association of Manufacturers, Association for Research in Ophthalmology; past board chairman, University Christian Church, Fort Worth; past director, Junior Achievement, American Red Cross (Fort Worth Chapter), Community Theatre, Fort Worth-Tarrant County TB Society; alumnus, Danforth College of Pharmacy, Harvard Business School.

## Board of Trustees

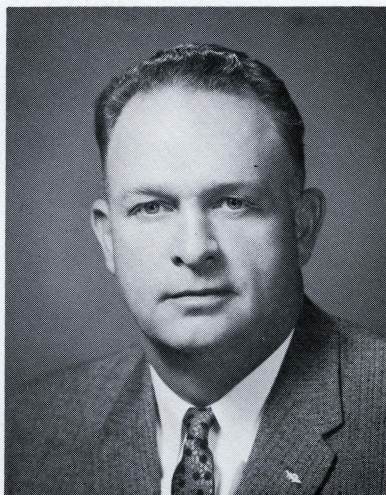


**Robert P. Dupree**

Since 1967

Fort Worth

*Banking.* Chairman of the Board and Chief Executive Officer, Continental National Bank; director, Chamber of Commerce; member, professional and civic organizations, St. Andrews Episcopal Church, Fort Worth; alumnus, University of Texas, Princeton University Graduate College.

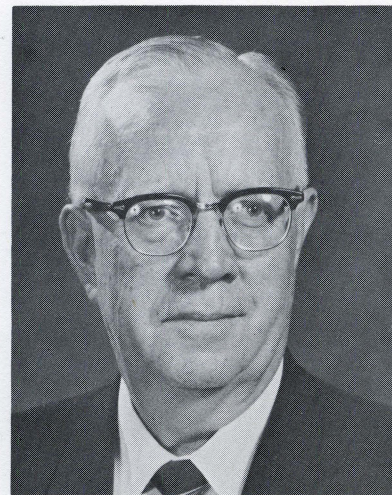


**Drew Ellis**

Since 1957

Perryton

*Farming-Ranching, Banking.* Director, First National Bank, Perryton; director, Vice President, Perryton Savings & Loan; director, High Plains Research Foundation, Tri-State Fair, Amarillo; active local and national political affairs; Mayor, Perryton, 11 years; Past President, Perryton Jaycees; Mason; Citizen of Year, Perryton Chamber of Commerce, 1960; trustee, First Christian Church, Perryton; former high school coach; two years pro-football, Philadelphia Eagles; alumnus, TCU.



**Fred Erisman**

Since 1956

Longview

*Law.* Practicing trial lawyer, civil and criminal cases; judge, 124th Judicial District Court, 1950-55; past chairman, Judicial Section State Bar of Texas; past president, District and County Attorneys Association of Texas, Gregg County Bar Association, Texas Trial Lawyers Association; member, International Academy of Trial Lawyers, Bar of Supreme Court of U.S. and all subordinate Appellate and District Courts and courts of special jurisdiction; member, Board of Visitors, M.D. Anderson Hospital and Tumor Institute; member, State Bar of Texas, American Bar Association, American Judicature Society, Phi Delta Phi; past president and area chairman, Longview Lions; member, Rotary; Mason, Knights Templar; member and past chairman of board, First Christian Church, Longview; B.A., TCU, 1929; alumnus, Brown University.



**Beeman Fisher**

Since 1962 Fort Worth

*Utilities.* Chairman of Board, Texas Electric Service Co.; member, Board of Directors, TCU Research Foundation; past president, Fort Worth and West Texas Chambers of Commerce, Fort Worth's Progress; member, executive committee, Texas Research League; past vice chairman, TAGER (The Association for Graduate Education and Research-North Texas area); received Top West Texas Award, 1965, Silver Beaver Award of Boy Scouts of America, 1968; member, Kiwanis, Exchange Club; Shriner; director, Fort Worth Art Association; member, Presbyterian church, Fort Worth.



**H. B. Fuqua**

Since 1952 Fort Worth

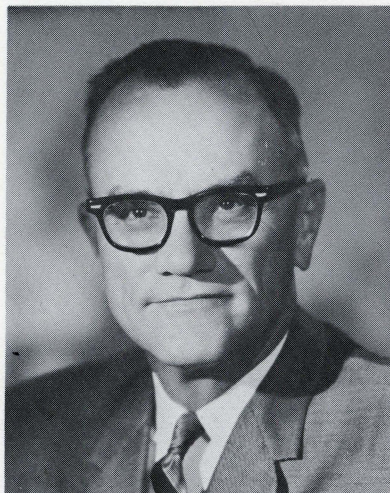
*Banking.* Chairman of Board, Fort Worth National Bank; past president, American Association of Petroleum Geologists; member, American Petroleum Institute, Kappa Alpha; member, Board of Directors, TCU Research Foundation; received Golden Deeds Award, Exchange Club, 1967; member, Broadway Baptist Church, Fort Worth; *Who's Who in America*; B.A., University of Oklahoma, 1919.



**Judge A. D. Green**

Since 1960 Vernon

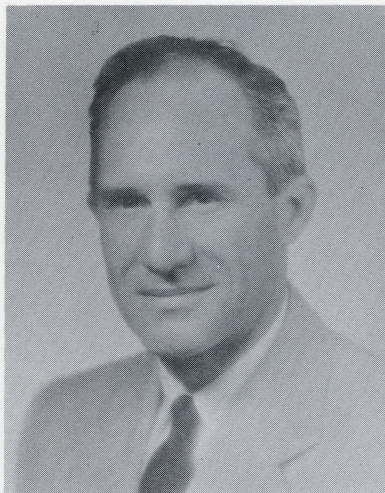
*Farming, Ranching, Oil.* County Judge, Wilbarger County, 1949-62; Director, Boys Club of America, Vernon; member, Rotary; 32nd degree Mason, Scottish and York Rite, Maskat Shrine Temple, Wichita Falls; member, Central Christian Church, Vernon; active in civic affairs; A.B. degree, TCU, 1923.



W. Oliver Harrison

Since 1954                      Corpus Christi

Minister, First Christian Church, Corpus Christi; vice chairman, Board of Trustees, Brite Divinity School; member, Board of Trustees, Pension Fund of Christian Church; member of board, Corpus Christi Association of Congregations; past president, Texas Association of Christian Churches, Downtown Kiwanis Club, Corpus Christi; A.B., TCU, 1932; B.D., TCU, 1935; M.A., University of Chicago, 1937; alumnus, Union Theological Seminary, Pacific School of Religion; honorary Doctor of Divinity degree, TCU, 1948.



Harold D. Herndon

Since 1956                      San Antonio

Independent Oil Operator, Geologist. Owner, Harold D. Herndon Co.; past chairman, Board of Directors, San Antonio Branch, Federal Reserve Bank of Dallas; past member, Board of Trustees, San Antonio Transit System; member, Board of Trustees, Trinity University; member, American Association of Petroleum Geologists; past president, San Antonio Kiwanis Club, Alamo Area Council, Boy Scouts of America and member, Region IX Executive Committee; past chairman, Good Government League; received Silver Beaver Award, 1956, Silver Antelope Award, 1963; member, Pi Kappa Alpha; Minister of Music, Central Christian Church, San Antonio; B.S., University of Kansas, 1925.



Marion L. Hicks

Since 1961                      Fort Worth

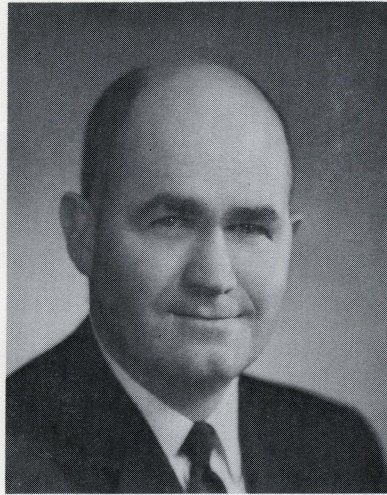
Law, Aerospace. General Counsel, General Dynamics/Fort Worth; member, Board of Directors, TCU Research Foundation; past president, Fort Worth Jr. Bar Association, Fort Worth Jaycees, Tarrant County United Fund Campaign, Fort Worth Arts Council and Opera Association; vice president, Fort Worth Chamber of Commerce; named Fort Worth's Outstanding Young Man of Year, 1941; received Distinguished Service Award, Society of American Value Engineers, 1966; member, First Church of Christ Scientist, Fort Worth, Rotary, Exchange Club; received Distinguished Alumnus Award, TCU, 1958; A.B., TCU, 1933; LL.B., Harvard Law School, 1937.



**Murray Kyger**

Since 1961 Fort Worth

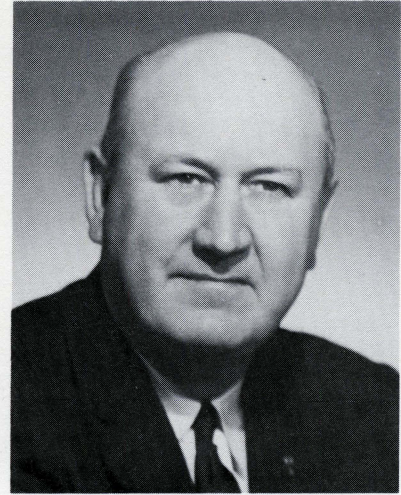
*Banking.* Chairman of Board, First National Bank of Fort Worth; past president, Reserve City Bankers Association; director, TCU Research Foundation, Federal Reserve Bank of Dallas, Great Southwest Corporation, Southwestern Life Insurance Co. of Dallas; member, Government Borrowing Committee of American Bankers Association; member of board, Southwestern Medical Foundation, University of Texas Southwestern Medical School, Dallas; director, Southwest Center for Advanced Studies; member, St. Andrew's Episcopal Church, Fort Worth, Beta Gamma Sigma, Sigma Iota Epsilon, Exchange Club of Fort Worth; B.B.A., University of Texas; LL.B., South Texas School of Law.



**Wm. J. Laidlaw, Jr.**

Since 1965 Fort Worth

*Insurance.* President and Board Chairman, Century Life Insurance Co.; member, Board of Directors, Continental National Bank, Fort Worth Chamber of Commerce; past president, Fort Worth Recreation Board; member and former board chairman, University Christian Church, Fort Worth; B.B.A., SMU, 1942.

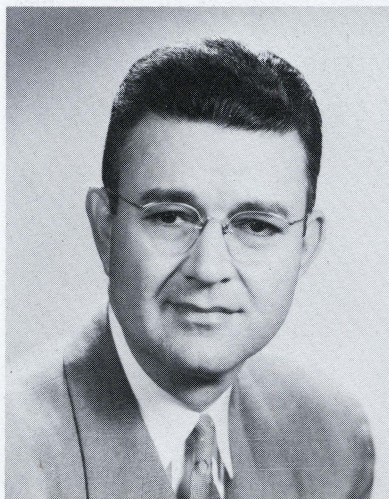


**Judge Jack M. Langdon**

Since 1962 Fort Worth

*Law.* Associate Justice, Court of Civil Appeals, 2nd Supreme Judicial District; Presiding Judge, 8th Administrative Judicial District, 1957-62; chairman, Judicial Section of State Bar of Texas; member, American Bar Association, American Judicature Society, State Bar Association of Texas, Fort Worth-Tarrant County Bar Association; Mason, Shriner; past Governor, Texas-Oklahoma District, Kiwanis; past president, TCU Ex-Lettermen's Association; president, TCU Century Club; member, Society of Former Special Agents of FBI, Delta Tau Delta; B.S. TCU, 1935; LL.B., University of Texas, 1939.

## Board of Trustees



**Sidney R. Latham**

Since 1947

Dallas

*Oil, Cattle, Law.* Retired Attorney; member, Texas Legislature, 1933-36; Secretary of State, Texas, 1943-45; Texas Representative on Interstate Oil Compact Commission, 1946-47; member, Board of Directors, Cotton Bowl Athletic Association since 1962; past president, Dallas Public Library Board of Trustees, TCU Alumni Association; received Valuable Alumnus Award, TCU, 1958; member, Dallas Bar Association, State Bar of Texas; active in civic and political affairs; former Chairman of Board, East Dallas Christian Church; B.A., TCU, 1929.



**W. Dewey Lawrence**

Since 1943

Tyler

*Law.* Attorney, Lawrence & Lawrence, Tyler; County Judge, Lamar County, 1923-26; Assistant Attorney General of Texas, 1929-30; Fellow and past director, State Bar of Texas; past president, Smith County Bar Association, Tyler Chamber of Commerce, Tyler Industrial Foundation, Tyler Civic and Community Concert Association, East Texas Hospital Foundation, Tyler Lions Club, East Texas Area Council, Boy Scouts of America; received Silver Beaver and Silver Antelope Awards; director, Tyler Pipe Industries, Inc., Tyler Savings & Loan Association; Mason, Scottish Rite; member, Southwestern Legal Foundation, American Bar Association, American Judicature Society, Sigma Alpha Epsilon; member, First Christian Church, Tyler; alumnus, TCU, Cumberland University.



**Y. Q. McCammon**

Since 1950

Fort Worth

*Investments, Oil, Banking.* Investment Counselor; vice president, Maxwell Oil Co.; director and chairman of Trust Committee, Continental National Bank; secretary-treasurer, Texas Educational Association; trustee and treasurer, Cook Memorial Hospital for Children; director and consultant, Texas Steel Co.; received Fort Worth Chamber of Commerce Sports Committee Award, 1964, TCU Ex-Lettermen's Association Award, 1952; honorary member, TCU Alumni Association; member, Calvary Presbyterian Church Independent, Men's Round Table Club of Fort Worth; alumnus, University of Texas.

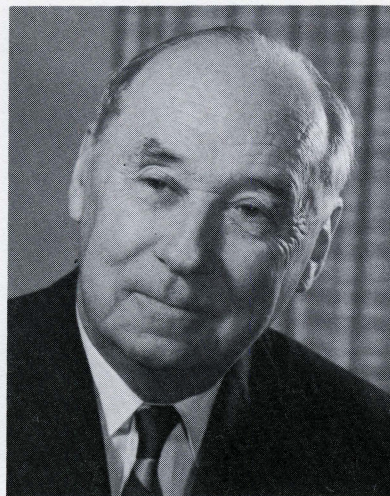


**J. C. Pace**

Since 1968

Fort Worth

*Foods.* President, Buddies Super Markets; board member, Future Fort Worth, Fort Worth Stock Show, Fort Worth National Bank, Fort Worth-Dallas Regional Airport Board; director, Fort Worth Chamber of Commerce, YMCA, Boy Scouts; president, Tarrant County Crime Commission; past president and chairman, Tarrant County United Fund; recipient, Silver Beaver Award, Boy Scouts; member, Methodist church, Exchange Club; alumnus, University of Texas.



**Neville G. Penrose**

Since 1968

Fort Worth

*Oil, Ranching.* Chairman of Board, Penrose Production Co.; oil and ranching interests in nine states, including Alaska and Republic of Mexico; founder and president, Penrose Good Neighbor Foundation; past president, International Good Neighbor Council; honorary chairman for life, Texas Good Neighbor Commission; founder and past chairman, Fort Worth Wildcatters and recipient of Man of Year award; received citation and is past director, National Conference of Christians and Jews; received Operation Amigos Award from Comite Norteamerico Pro-Mexico, and many other awards; long service on state Democratic executive committee and delegate to national convention; past director, Texas Independent Producers and Royalty Owners Association, Mid-Continent Oil and Gas Association, Independent Petroleum Association of America, League of United Latin American Citizens, Camp Fire Girls, Warm Springs Foundation; member, TCU Advisory Board, 1966-68; honorary Doctor of Laws degree, TCU, 1968.



**Cyrus K. Rickel**

Since 1968

Fort Worth

*Gas, Engineering.* Honorary Chairman of Board, Big Three Industrial Gas and Equipment Co.; president, Independent Oxygen Manufacturer's Association; member, Texas Society of Professional Engineers and named Engineer of the Year, 1968, by Fort Worth Chapter, TSPE; member, Congregational Church, Minneapolis, Minn.; E.E., University of Minnesota, 1914.

Board of Trustees



**Newton J. Robison**

Since 1962

Amarillo

Minister, First Christian Church, Amarillo; past president, North Carolina State Convention of Christian Churches, Texas Association of Christian Churches, Amarillo Ministerial Association; chairman, Board of Unified Promotion (Christian Church); member of board, Family Counseling, Travelers Aid, Community Action Corp., Vocational Rehabilitation Commission of Amarillo; past board member, Community Chest, Amarillo Area Foundation, Salvation Army; member, Kiwanis; A.B., Southwestern University, 1923; B.D., Brite Divinity School, TCU, 1931; honorary Doctor of Divinity degree, TCU, 1950.

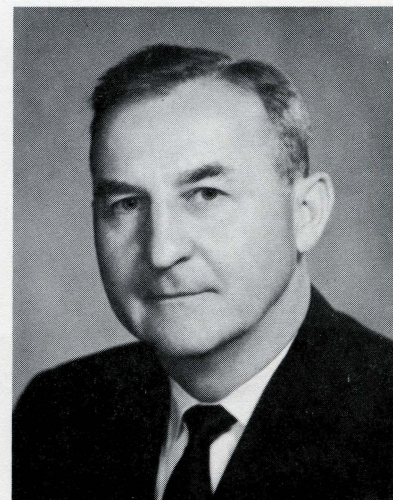


**W. Burgess Sealy**

Since 1968

Fort Worth

Medicine. Surgeon; chairman, Board of Trustees, Harris College of Nursing (TCU) and member since 1959; diplomate, American Board of Surgeons; fellow, American College of Surgeons; member, Texas Surgical Society, Southwestern Surgical Congress, International Academy of Medicine; past president, Priestley Surgical Society; president, Tarrant County Chapter, American Cancer Society; member, Matthews Memorial Methodist Church, Fort Worth, Theta Zeta, Phi Alpha Sigma, Alpha Omega Alpha; M.S. in Surgery, University of Minnesota, 1931; M.D., University of Texas Medical School, 1934; residency, Mayo Clinic.



**Ralph B. Shank**

Since 1943

Dallas

Law. Senior Partner, Shank, Irwin, Conant & Williamson Law Firm; former instructor, SMU Law School; past district chairman, Boy Scouts; past chairman, Oil and Gas Division, Southwest Legal Foundation; member, Texas and Dallas Bar Associations; member and trustee, Central Christian Church, Dallas; received Thomas Gibson Hobbs Memorial Award as outstanding alumnus, Lynchburg College, 1957; A.B., Lynchburg College, 1927; LL.B., Columbia University, 1930.

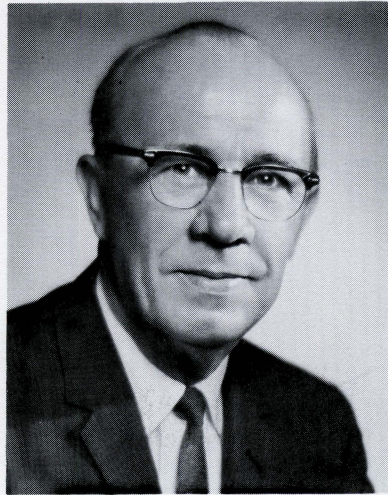


Vernon S. Smith

Since 1966

Dallas

*Building and Construction.* Partner, Vernon & James Smith Co.; president, Dallas Home Builders, Dallas Assembly, Oak Cliff Chamber of Commerce; director, Dallas Chamber of Commerce; member, American Institute of Architects, National Association of Home Builders, Salesmanship Club of Dallas; received Hugh Prather Award as Dallas builder contributing most to community betterment, 1954; named Oak Cliff Man of the Year, 1967; former member, Dallas City Council; member, Oak Cliff Christian Church, Dallas; B. Architecture, Texas A&M University, 1940.



Tilford T. Swearingen

Since 1964

Fort Worth

*Ministry, Education.* Executive Director, Texas Association of Christian Churches, with member agencies including TCU, Jarvis Christian College, Juliette Fowler Homes; trustee, Jarvis Christian College; president, William Woods College, Fulton, Mo., 1951-60; state director, Unified Promotion (Christian Church); member, Commission on Brotherhood Restructure; past director, International Convention of Christian Churches; member, Board of Directors, Texas Council of Churches; delegate of Christian Churches to Constituting Convention, National Council of Churches in America; past member, Kiwanis, Rotary; special recognition for creation of God and Community Award for girls in church Scouting; author; member, University Christian Church, Fort Worth; A.B., Phillips University, 1923; M.A. (ibid), 1924; honorary Doctor of Divinity (ibid), 1937; alumnus, University of Chicago.



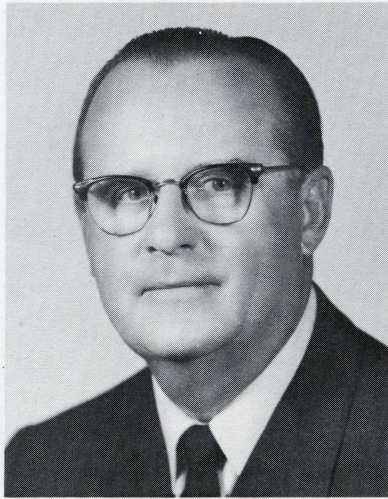
Charles D. Tandy

Since 1968

Fort Worth

*Manufacturing.* Chairman of Board, Tandy Corporation; director, Fort Worth National Bank, Fort Worth Chamber of Commerce, Trinity Valley School, Fort Worth Community Theatre; board member, Junior Achievement Program of Fort Worth; member, Texas Manufacturers Association, Newcomen Society in North America, Exchange Club; received Distinguished Achievement Award Industry and Commerce, TCU Alumni Association, 1967, Distinguished Alumnus Award, TCU, 1967; *Who's Who in America, Who's Who in Commerce and Industry*; member, Baptist church, Fort Worth; B.A., TCU, 1940; M.B.A., Harvard Business School.

Board of Trustees



Glen Turbeville

Since 1961 Fort Worth

*Oil, Investments.* Chairman of Board, Morrison Supply Co.; member, Board of Directors, Fort Worth National Bank, Fort Worth Belt Railway Co.; president, American Institute of Supply Association; past president, Wholesale Distributors Association; member, Newcomen Society in North America, Magnolia Avenue Christian Church, Fort Worth; B.B.A., TCU, 1925.



Gean B. Turner

Since 1956 Cleburne

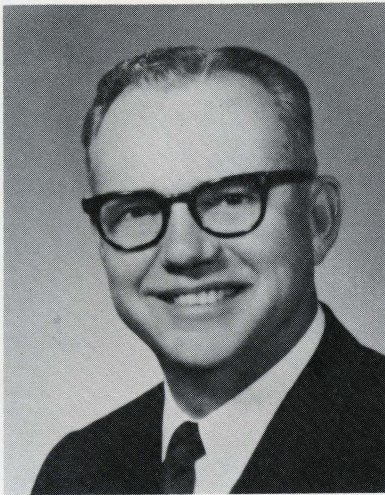
*Law, Farming, Ranching.* Partner, Turner and MacLean law firm; attorney, Gulf, Colorado and Santa Fe Railway Co.; former county and district attorney for 18th district; member, Texas State Bar Association, Texas Association of Plaintiffs Attorneys, Johnson County Bar Association; past president, Cleburne Lions Club; Mason, Shriner; member, First Methodist Church, Cleburne; alumnus, TCU, Cumberland University Law School.



Granville T. Walker

Since 1945 Fort Worth

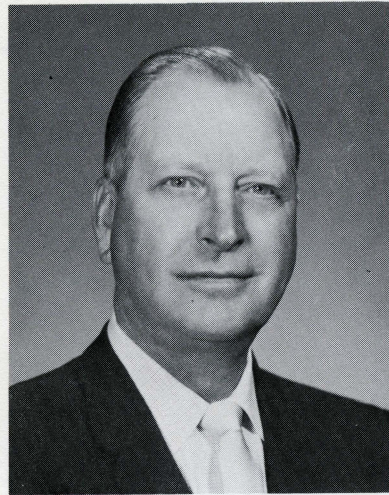
*Pastor, University Christian Church, Fort Worth; secretary, Board of Trustees, Brite Divinity School (TCU); past chairman, Christian Church Commission on Brotherhood Restructure; president, International Convention of Christian Churches, 1958, 70th annual Texas Convention of Christian Churches, 1957; chairman, department of Undergraduate Religion, TCU, 1939; past president, Fort Worth Kiwanis Club, Fort Worth Area Council of Churches; "Granville Walker Day" in Fort Worth celebrated by city in his honor; member, Alpha Chi; received Distinguished Alumnus Award, TCU, 1959; B.A., TCU, 1935; B.D., TCU, 1937; B.D., Yale, 1942; Ph.D., Yale, 1948; honorary Doctor of Divinity degree, TCU, 1947.*



Howard F. Walsh

Since 1968 Fort Worth

*Oil, Ranching.* Independent oil producer and rancher; member, Board of Trustees, Southwestern Baptist Theological Seminary, Southern Baptist Foundation; director, First National Bank of Fort Worth; member, numerous trade, oil and cattle organizations; member, Broadway Baptist Church, Fort Worth; received Valuable Alumnus Award, TCU, 1967; B.B.A., TCU, 1933.



A. D. Weatherly

Since 1949 Amarillo

*Ranching, Investments, Oil.* President, Panhandle Producers & Royalty Association; member, New Mexico Cattle Growers Association, Texas Mid-Continent Oil & Gas, Independent Petroleum Association; Mason, Shriner; member, Lambda Chi Alpha, Panhandle Plains Historical Society; past Chairman of Board, First Christian Church, Amarillo; B.B.A., TCU, 1932; Honorary Doctor of Laws degree, TCU, 1968.



C. R. Williams

Since 1959 Houston

*Engineering, Investments.* Owner, C. R. Williams Co.; member, American Gas Association, National Gas Producers Association, American Institute Mechanical Engineers; past president, National Petroleum Council, National Gas Association of America (now NGPA); member, Alpha Chi Sigma; received DeMolay Legion of Honor, 1957; member, Bethany Christian Church, Houston; B.S., University of Oklahoma, 1930; alumnus, Johns Hopkins.

*Board of Trustees*



**Sam P. Woodson, Jr.**

*Since 1959*                      *Fort Worth*

*Beverage.* Executive Vice President, Coca-Cola Bottling Co.; managing director, T. J. Brown & C. A. Lupton Foundation; vice chairman, TCU Research Foundation, Arts & Sciences Foundation of University of Texas; past director, Fort Worth Chamber of Commerce; member Episcopal church, Exchange Club, Kappa Sigma; alumnus, Wentworth Military Academy, University of Texas; honorary member, TCU Alumni Association.

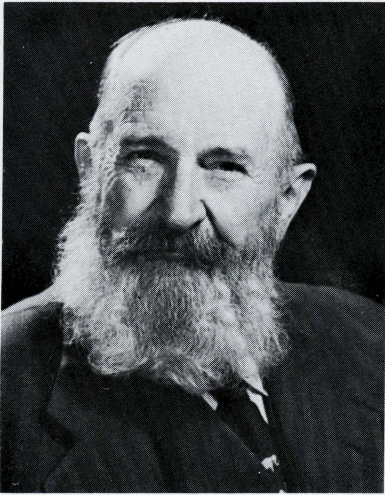


**L. C. Wright**

*Since 1957*                      *Fort Worth*

*Retired.* Business Manager, TCU, 1932-55; athletic director, TCU, 1922-38; received TCU Valuable Alumnus Award, 1959, Horned Frog dedicatee, 1955; named to TCU Ex-Lettermen's Hall of Fame, 1967; active interest in civic, business, educational affairs; B.A., TCU, 1910; honorary Doctor of Business Administration degree, TCU, 1951.

*Honorary Board Members*



**Bonner Frizzell**

*Since 1934      Palestine, Texas*

*Retired.* Former school superintendent; director and Chairman of Board, National Educators Life Insurance Co., Fort Worth; former owner, radio station KNET, Palestine; trustee, Jarvis Christian College for 20 years; active civic and business organizations; member, TCU Ex-Lettermen's Association, Rotary, Phi Delta Kappa; Mason; former editor, TCU student publications; president, TCU Alumni Association, 1914-15; alumnus, TCU; honorary LL.D. degree, TCU, 1937.



**George P. Kuykendall**

*Since 1943      Lubbock*

*Investments.* President, Kuykendall Investment Co.; active in banking, 1911-24; Chevrolet dealer, 1924-55; past president, Texas Automobile Dealers, Kiwanis; Mason, Shriner; elder, First Christian Church, Lubbock; trustee, Jarvis Christian College since 1958.



**D. G. McFadin**

*Dallas*

*Retired.* Founder of McFadin Ministerial Loan Fund and Lectureship, TCU, 1943.

*Honorary Board Members*



**L. A. Nordan**

*San Antonio*

*Oil, Ranching, Farming.* Independent oil operator, leading rancher and farmer; active in religious, cultural, civic, and educational affairs; significant support to Disciple of Christ churches in brotherhood, particularly to Central Christian Church, San Antonio, and to other major protestant denominations; additional support to many ecumenical and educational programs; major civic contributions to United Fund of San Antonio, San Antonio Symphony Society, South Texas Medical School, others; established Nordan Fine Arts Scholarships at TCU; past president, San Antonio Symphony; director of two banks; honorary Doctor of Laws degree, TCU, 1964.



**W. M. Sherley**

*Since 1949*

*Lazbuddie*

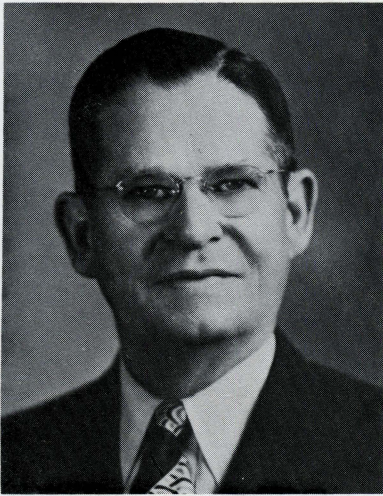
*Farming, Ranching.* Owner, Sherley Grain Co., Anna, Texas; president, Sherley-Anderson Lazbuddie Elevator, Bovina, Texas; active in farming, ranching, soil conservation, education, athletics; former manager, TCU baseball team; former chairman, athletic committee, TCU Board of Trustees; alumnus, TCU.



**W. M. Woods**

*Austin*

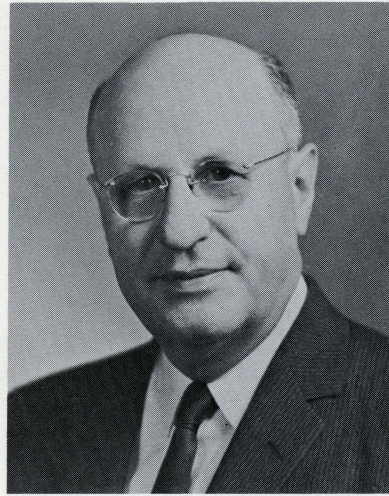
*Retired.* Farming; active interest in Juliette Fowler Homes, Dallas.



H. C. Anderson

Since 1954                      Hallettsville

*Retired.* Independent oil operator; past director, Rotary International; received 40 year Boy Scouter Award, 1963; board member, Boy Scouts of America Capitol Area Council, Austin; co-founder and past president, Shreveport Society for Nature Study; past director, West Texas Chamber of Commerce; past vice president, East Texas Chamber of Commerce; alumnus, Tyler Commercial College.



A. Edwin Brooks

Fort Worth

*Attorney.* Partner, Brooks, Tarlton, Wilson & Gilbert law firm; member, state, local and national bar associations; member, University Christian Church, Fort Worth; alumnus, American University; LL.B., George Washington University, 1933.



Mrs. R. Houston Foster

Houston and Fort Worth

Charter member, Central Christian Church, Fort Worth; member, River Crest Country Club, Fort Worth Club, Woman's Club, Woman's Wednesday Club; alumna, TCU.

## Advisory Board Members



**Quentin N. Grey**

Since 1963

Fort Worth

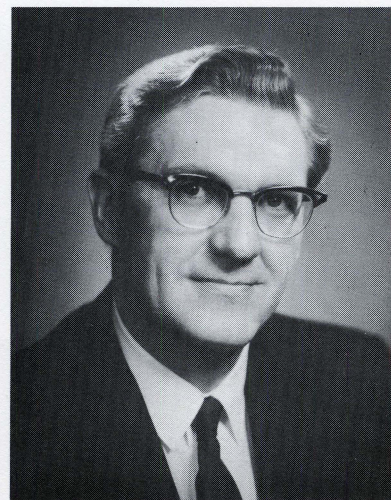
Minister. First Christian Church, Fort Worth; past president, Board of Managers, United Christian Missionary Society; active in religious, youth, civic, social programs and associations; A.B., Atlantic Christian College, 1935; B.D., Butler University, 1944; M.Ed., University of Pittsburgh, 1956; honorary Doctor of Divinity degree, Butler University, 1958, TCU, 1964.



**J. Lee Johnson, Jr.**

Fort Worth

Retired. Interest in oil, real estate, banking; retired Chairman of Board and Chief Executive Officer, First National Bank, 1961; past president, Lumbermen's Association of Texas, Fort Worth Museum of Science and History (formerly Children's Museum); received Golden Deeds Award, Exchange Club, 1950, B'nai B'rith L. F. Shanblum Lodge Civic Achievement Award, 1962; member, St. Patrick's Co-Cathedral, Fort Worth; honorary member, TCU Alumni Association.



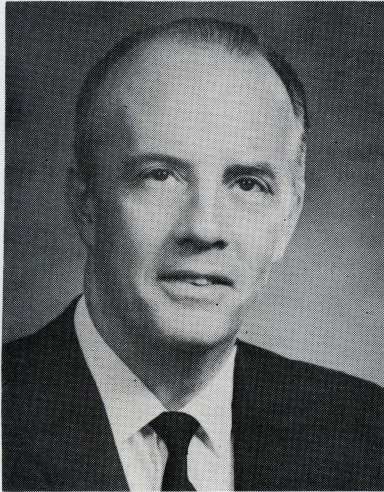
**Lewis H. McAdow**

Since 1964

Houston

Senior Minister. Bethany Christian Church, Houston; president, Christian Literature Commission of Christian Church, Texas Association of Christian Churches; member, Board of Trustees, Institute of Religion, Houston Council on Alcoholism, Affiliate Board of National Council on Alcoholism; member, Board of Directors, International Convention of Christian Churches, Texas Bible Chair; past president and trustee, Board of Managers of United Christian Missionary Society; former trustee, Tougaloo Southern Christian College, Board of Higher Education (Christian Church); past president of Houston Council of Churches and Greater Houston Clergy Association; past board member, YMCA, Holly Hall Home for Retired, Planned Parenthood Center; author; *Who's Who in the South and Southwest*; B.A., Missouri Valley College, 1937; B.D., Lexington Theological Seminary, 1940; M.A., University of Missouri, 1947; Th.M., Christian Theological Seminary, 1951; honorary Doctor of Divinity degree, TCU, 1957, Doctor of Laws degree, Missouri Valley College, 1958.

Advisory Board Members



J. Robert Moffett

Since 1966

Houston

Minister. First Christian Church, Houston; past president, Tucson (Ariz.) Council of Churches, Alumni Council of Disciples Divinity House, University of Chicago, Campbell Institute; member, Commission on Brotherhood Restructure, Home-State Missions Planning Council, both since 1962; member, Rotary Club of Houston; A.B., Drury College, 1943; B.D., Divinity School of University of Chicago, 1946; honorary Doctor of Divinity degree, Drury College, 1967.

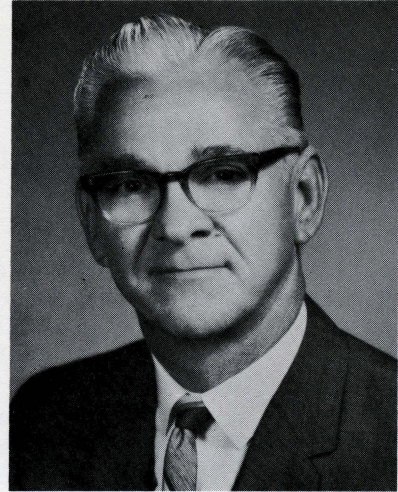


Dudley Strain

Since 1966

Lubbock

Minister. First Christian Church, Lubbock; past president, Texas State Convention Christian Churches, 1958; past chairman, Texas Board of Christian Churches, 1959-60; team member, Japan Summer Evangelism Mission, 1963; member, Lubbock Ministerial Association, Lions, Phi Eta Sigma, Phi Kappa Phi; A.B., Butler University, 1935; B.D., 1938, and M.ST., 1939, Yale University Divinity School; alumnus, Union Theological Seminary; honorary Doctor of Divinity degree, TCU, 1958.



William E. Wright

Since 1962

Wichita Falls

Minister. First Christian Church, Wichita Falls; member, Board of Directors, International Convention of Christian Churches; member, Commission on Brotherhood Finance; State vice president and member, Executive Board, Texas Association of Christian Churches; chairman, special hospital commission of Wichita Falls; board member, Red Cross, Mental Health Center, South Side Girl's Club; past president, Kiwanis; Mason, Shriner; B.A., TCU, 1940; B.D., Brite Divinity School (TCU), 1943; honorary Doctor of Divinity degree, TCU, 1957.

## THE BOARD OF TRUSTEES

*Term Expires March, 1969*

Ralph B. Shank, Since 1943 ..... Dallas  
Andrew A. Bradford, Since 1951 ..... Midland  
Lorin A. Boswell, Since 1955 ..... Fort Worth  
Bryant M. Collins, Since 1960 ..... Austin  
Judge A. D. Green, Since 1960 ..... Vernon  
Glen Turbeville, Since 1961 ..... Fort Worth  
W. C. Conner, Since 1962 ..... Fort Worth  
T. T. Swearingen, Since 1964 ..... Fort Worth  
Sterling W. Brown, Since 1966 ..... New York  
Vernon Smith, Since 1966 ..... Dallas

*Term Expires March, 1970*

Granville Walker, Since 1945 ..... Fort Worth  
Theodore Beasley, Since 1954 ..... Dallas  
W. Oliver Harrison, Since 1954 ..... Corpus Christi  
Drew Ellis, Since 1957 ..... Perryton  
L. C. Wright, Since 1957 ..... Fort Worth  
Murray Kyger, Since 1961 ..... Fort Worth  
Newton J. Robison, Since 1962 ..... Amarillo  
William J. Laidlaw, Since 1965 ..... Fort Worth  
Amon Carter, Jr., Since 1966 ..... Fort Worth  
Earl E. Combest, Since 1966 ..... Dallas

*Term Expires March, 1971*

Dewey Lawrence, Since 1943 ..... Tyler  
M. J. Neeley, Since 1947 ..... Fort Worth  
Carlos Ashley, Since 1949 ..... Llano  
Lester Clark, Since 1956 ..... Breckenridge  
Fred Erisman, Since 1956 ..... Longview  
Harold Herndon, Since 1956 ..... San Antonio  
Gean B. Turner, Since 1956 ..... Cleburne  
Earle B. Barnes, Since 1959 ..... Freeport, Tex., Midland, Mich.  
Judge Jack M. Langdon, Since 1962 ..... Fort Worth  
Robert P. Dupree, Since 1967 ..... Fort Worth

*Term Expires March, 1972*

Sidney Latham, Since 1947 .....Dallas  
Robert Carr, Since 1949 .....San Angelo  
A. D. Weatherly, Since 1949 .....Amarillo  
S. Brachman, Since 1950.....Fort Worth  
Y. Q. McCammon, Since 1950 .....Fort Worth  
H. B. Fuqua, Since 1952 .....Fort Worth  
C. R. Williams, Since 1959 .....Houston  
Sam P. Woodson, Since 1959 .....Fort Worth  
Marion Hicks, Since 1961 .....Fort Worth  
Beeman Fisher, Since 1962 .....Fort Worth  
Cyrus K. Rickel, Sr., Since 1968 .....Fort Worth  
Neville G. Penrose, Since 1968 .....Fort Worth  
F. Howard Walsh, Since 1968 .....Fort Worth  
Charles D. Tandy, Since 1968 .....Fort Worth  
J. C. Pace, Since 1968 .....Fort Worth  
Burgess Sealy, Since 1968 .....Fort Worth

**HONORARY BOARD MEMBERS**

Bonner Frizzell ....Palestine      L. A. Nordan ....San Antonio  
George Kuykendall ..Lubbock      W. M. Sherley ..... Anna  
D. G. McFadin .....Dallas      W. M. Woods .....Austin

**ADVISORY BOARD MEMBERS**

*(Serving Two-Year Terms)*

H. C. Anderson ..Hallettsville      Lewis H. McAdow ..Houston  
A. Edwin Brooks .Fort Worth      J. Robert Moffett ...Houston  
Mrs. R. Houston                      Dudley Strain .....Lubbock  
    Foster .....Houston      William E.  
N. Quentin Grey ..Fort Worth      Wright .....Wichita Falls  
J. Lee Johnson, Jr. .Fort Worth

**OFFICERS OF THE BOARD**

Chairman .....Lorin A. Boswell  
Vice-Chairman .....M. J. Neeley  
Secretary .....Dean Jerome A. Moore

