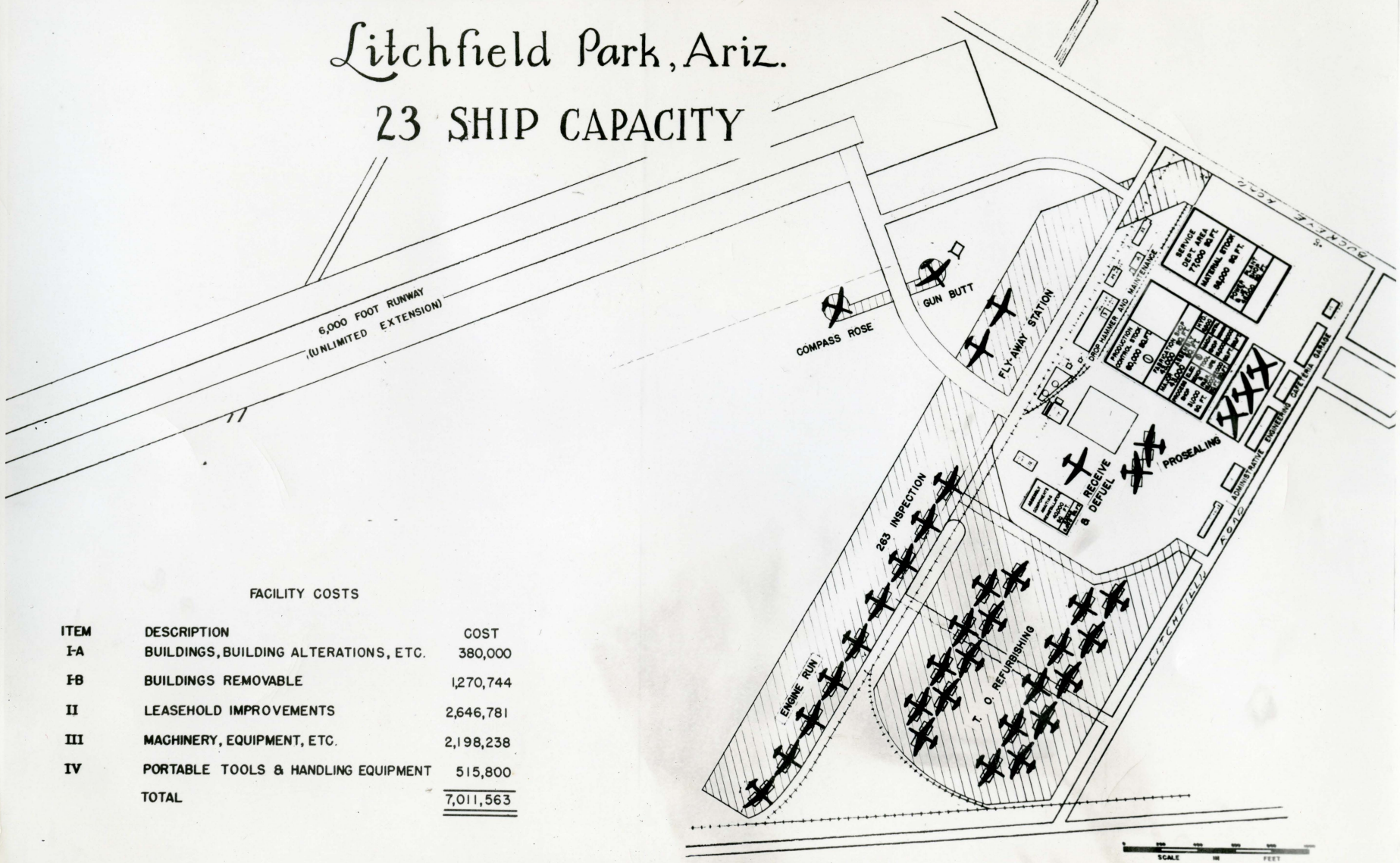


Convair

B-36 MODIFICATION FACILITY PROPOSAL

Litchfield Park, Ariz.

23 SHIP CAPACITY



FACILITY COSTS

ITEM	DESCRIPTION	COST
I-A	BUILDINGS, BUILDING ALTERATIONS, ETC.	380,000
IB	BUILDINGS REMOVABLE	1,270,744
II	LEASEHOLD IMPROVEMENTS	2,646,781
III	MACHINERY, EQUIPMENT, ETC.	2,198,238
IV	PORTABLE TOOLS & HANDLING EQUIPMENT	515,800
	TOTAL	<u>7,011,563</u>

Convair

B-36 MODIFICATION FACILITY PROPOSAL

Litchfield Park, Ariz.

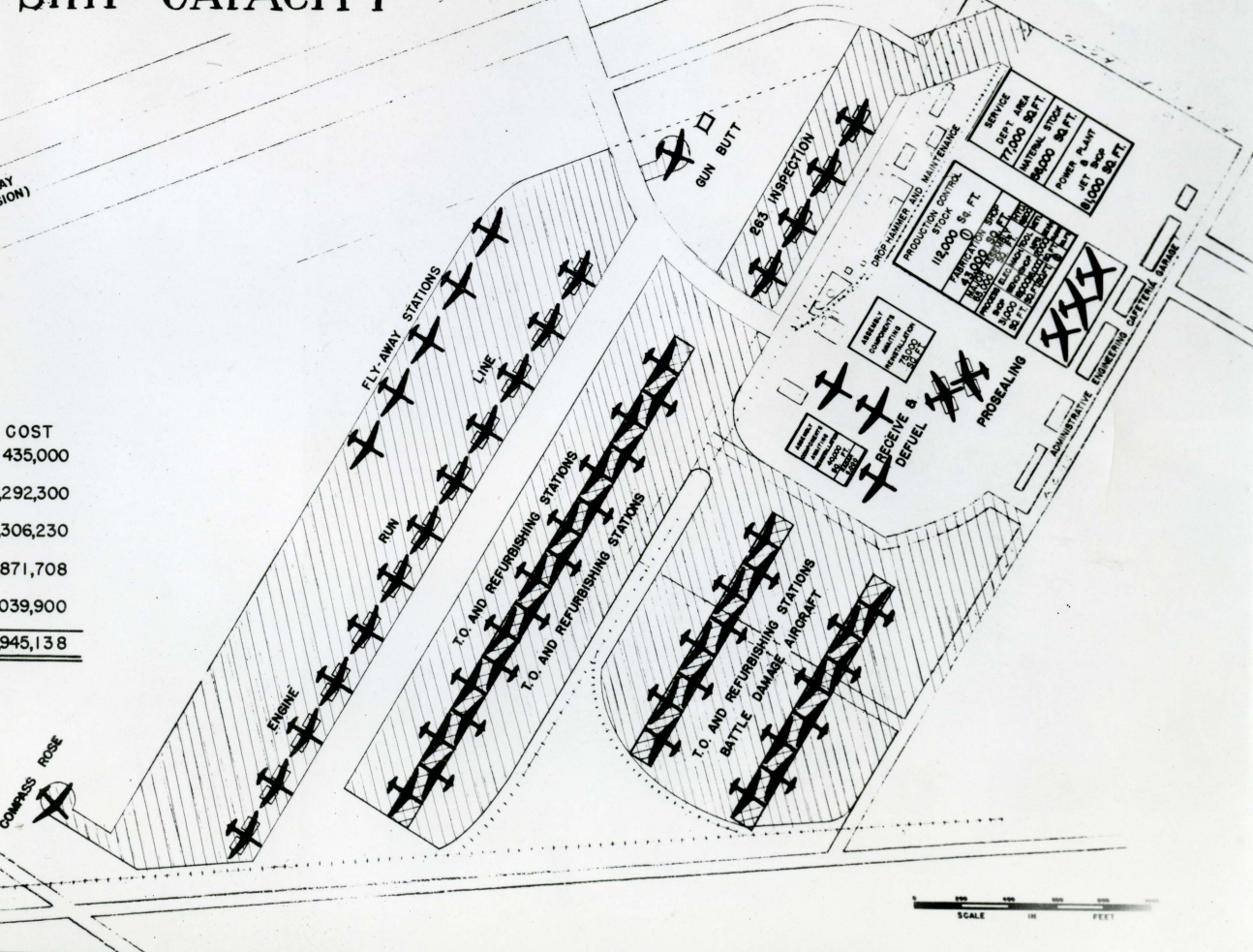
62 SHIP CAPACITY

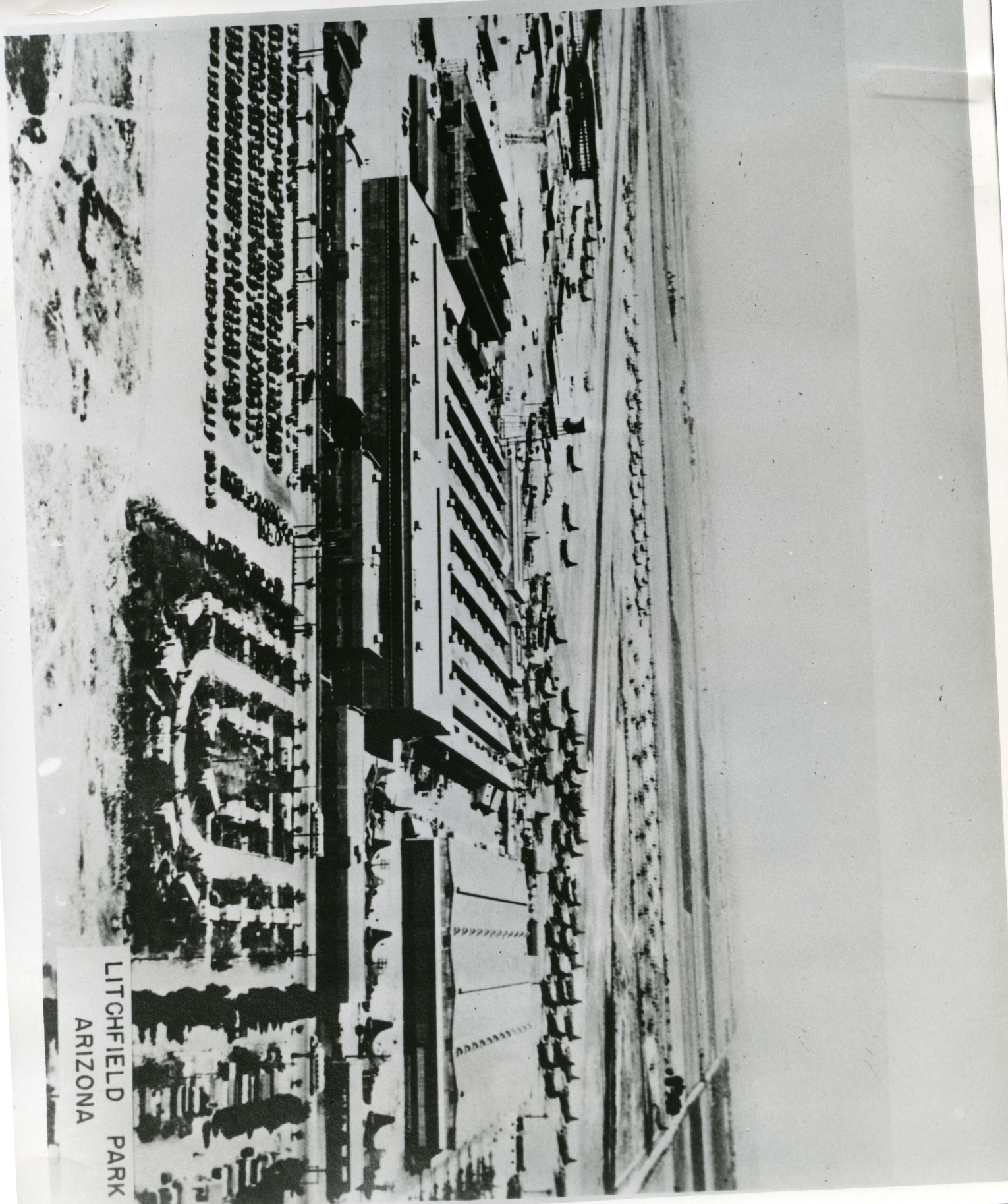
6,000 FOOT RUNWAY
(UNLIMITED EXTENSION)

FACILITY COSTS

ITEM	DESCRIPTION	COST
IA	BUILDINGS, BUILDING ALTERATIONS, ETC.	435,000
FB	BUILDINGS REMOVABLE	3,292,300
II	LEASEHOLD IMPROVEMENTS	5,306,230
III	MACHINERY, EQUIPMENT, ETC.	3,871,708
IV	PORTABLE TOOLS & HANDLING EQUIPMENT	1,039,900
	TOTAL	13,945,138

COMPASS ROSE





LITCHFIELD PARK
ARIZONA

GENERAL INFORMATION

LOCATION

Occupying a tract of over 130 acres, Goodyear Aircraft Corporation, Arizona Division, is located at Litchfield, 17 miles west of Phoenix, within easy reach of the important aircraft centers of the West Coast. Ideally situated from a climatic standpoint, with clear, sunny skies that provide the world's finest flying conditions, Goodyear-Arizona possesses one of the finest Airports in the country. A runway, or landing strip, 150-feet wide and 6000 feet long, with 175 foot shoulders on each side, is connected with the hangar buildings by continuous concrete approaches.

TRANSPORTATION

Phoenix is serviced by American Airlines and T.W.A.

The Goodyear-Arizona plant is serviced directly by Southern Pacific Railroad, while Phoenix is serviced also by Atchison, Topeka and Santa Fe Railroad.

Phoenix is also served by 20 motor trucking companies.

PLANT FACILITIES

Plant facilities of Goodyear-Arizona include a total of 902,302 square feet of floor space. Most of this area is within the following 11 major buildings:

Main Manufacturing (#1)	290,000 square feet
Modification (#6)	205,000 square feet
Hangar (#26)	110,000 square feet
Assembly (#76)	75,000 square feet
Warehouse (#86)	54,000 square feet
Administration (#10)	20,400 square feet
Raw Material Stores (#16)	20,000 square feet
Personnel and Hospital (#42)	18,600 square feet
Engineering (#12)	14,400 square feet
Cafeteria (#8)	14,400 square feet
Foundry and Drop Hammer (#16)	10,000 square feet
	<hr/>
	831,800 square feet

Because of favorable climatic conditions, with the highest proportion of clear, sunny days of any area in the United States, many types of work on aircraft can be done in the open. Goodyear-Arizona has over 950,000 square feet of concrete and asphalt paved areas where this kind of work can be carried on. Batteries of powerful floodlights make it possible for over 400,000 square feet of these areas to be used twenty-four hours a day.

LITCHFIELD PARK
ARIZONA