

LARGEST CIRCULATION  
IN TEXAS  
OVER 200,000 DAILY

# FORT WORTH STAR-TELEGRAM

EVENING

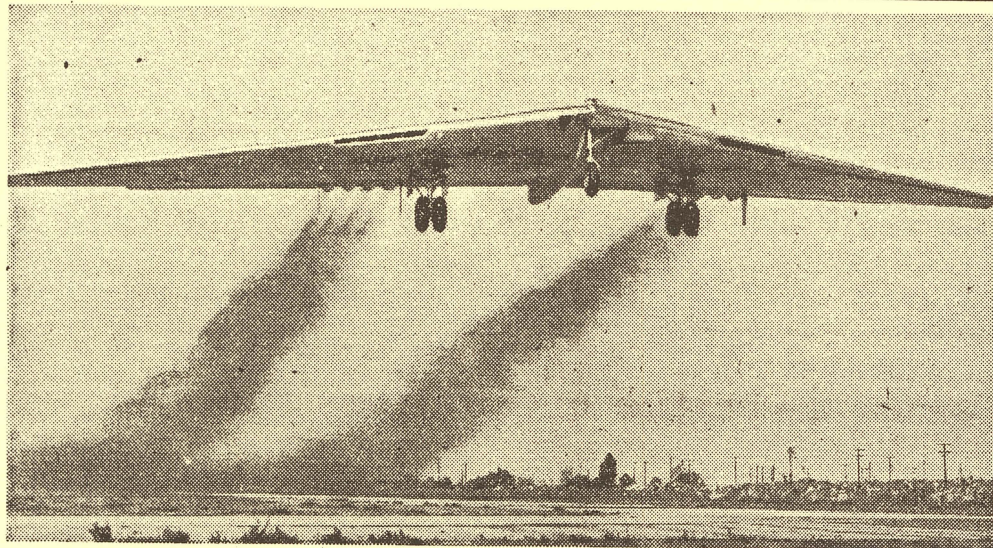
(CTS)—Chicago Tribune Service • (CDN)—Chicago Daily News • (INS)—International News Service • (NYT)—New York Times  
(NANA)—North American Newspaper Alliance • A Fort Worth Owned Newspaper • (AP)—Associated Press (Four Wires)

SIXTY-EIGHTH YEAR, NO. 174.

FORT WORTH, TEXAS \*\*\*Where the West Begins\*\*\* FRIDAY, JULY 23, 1948.

THIRTY-TWO PAGES

PRICE FIVE CENTS



—International News Photo.

**FLYING WING TO BE BUILT HERE**—Plans to build the giant B-49 eight-jet Flying Wing at the Consolidated-Vultee plant here were announced Friday. The eight-jet engines of the craft develop 32,000 horsepower with a speed in the 500 miles an hour bracket.

## Killers of Seven Are Trapped; One Slain

### COUNCIL SPLIT ON VACANCY WIDENING

BY TONY SLAUGHTER.  
A split among members of City Council appeared Friday to be widening; after the eight-member group failed to agree on a successor to resigned Councilman Ros-

coe L. Carnrike at City Hall Thursday afternoon.

With Travis Young, park board member, polling four votes in one of the council's rare open meetings on such matters late Thursday, and R. E. Cowan, Civil Service Board member and feed company manager, getting the remaining four votes, it appeared that a "dark horse" would move in as the choice of the council. Five of the eight votes are required to name Carnrike's successor.

Young, supported by Mayor Deen, Councilmen Tunstill, Eagle and Marks, had strong support from 19 Arlington Heights businessmen at the open session Thursday but not a single member of the group supporting Cowan switched to Young.

#### Meeting Notice Short.

Councilman Berry, who seconded Councilman Edwards' motion to appoint Cowan, asked Mayor Deen, "Who notified the Arlington Heights group that the council was holding a session Thursday afternoon?" Deen replied that he didn't know.

Berry said that it was a good representation for Young on such short notice. He said that he wasn't notified of the meeting until noon.

Newspaper reporters were not told until 1 p. m. by City Manager Jones' office that the council would meet at 4 p. m.

Deen said he did not know why 1 p. m. was set as the time for the newspaper release. He said he called the meeting at the request of Councilman Edwards, who is supporting Cowan. Deen said that he favored open meetings of the council and that he told members Thursday afternoon that the council should meet in an open ses-

### Selecting a Senator

(An Editorial)

In selecting a United States Senator in Saturday's primary the people of Texas in reality will be hiring a man, with a six-year contract, to do a tremendously important job.

The man selected should be chosen with the same care a business man exercises in hiring men for key positions. The points to be considered in choosing between several applicants include (1) ability, (2) experience and (3) age. In each of these tests Representative Lyndon Johnson emerges as pre-eminently the best qualified man in the race.

Lyndon Johnson's ability has been demonstrated many times and in many ways in the years he has been an honored and respected member of the House of Representatives. He is a man of decisive action who has shown that he knows how to get things done.

He is a man of vision, as was evidenced in 1939 when he foresaw the possibility of war with Japan, more than two years before it started, and voted for the fortification of Guam. Some who voted against this proposal did not realize their tragic mistake until the Japs took Guam, with little effort, less than a week after the war began. The cost of recapturing this outpost was many times the amount of the 1939 appropriation. When it was retaken it was used as a base from which our bombers softened up Japan for the final knockout blow of the war.

As for experience, Lyndon Johnson has become intimately familiar with Washington procedures and national legislative procedures in his nearly 12 years in the House. If he is promoted to the Senate, as he richly deserves to be, he will be in position to get right down to business immediately. He will have to lose no time getting his feet on the ground, learning the ropes and boning up on the numerous complex issues now pending in Congress.

The invaluable experience Lyndon Johnson has gained through his apprenticeship in the House is a qualification possessed by none of the other candidates in the race. If all other factors to be considered were equal, this experience alone should tip the scales heavily in favor of Mr. Johnson.

But other factors are not equal. There is the matter of age. At 39, Lyndon Johnson is the youngest of the major candidates, and this is an important consideration. Senators attain prestige and influence only after years of service. Mr. Johnson is young enough to acquire the needed seniority, which is an important advantage over

### Two Police Officers Wounded

VAN WERT, Ohio, July 23 (AP). Two youthful ex-convicts reached the end of a 14-day seven-slaying crime career Friday in a gun battle with police at a road block.

One of the pair, whose bloody trail had terrorized Ohio for two weeks, was dead—shot between the eyes—and the other captured.

Two police officers were wounded in the wild flurry of rifle, pistol and submachine gun shots which ended the greatest manhunt Ohio has ever witnessed.

John C. West, 24-year-old bespectacled parolee of the Mansfield reformatory, formerly of Parkersburg, W. Va., and described as the "gun happy" member of the duo, was shot to death.

His partner, 22-year-old Robert M. Daniels of Columbus, another ex-convict, put up his hands and surrendered without firing a shot, although police said he had a rifle and three revolvers beside him.

Earlier police said Daniels had confessed the seven murders which had kept the Midwest in a turmoil, but Daniels later was quoted as saying he had "heard the shots, but West did the shooting."

#### Road Blocks Pay Off.

The highway patrol, local police, FBI and other officials had set up road blocks all over the northern half of the state after two more killings early Friday, and the road blocks paid off.

Van Wert County and city officials were stationed at a road block six miles northeast of here, where routes 224 and 627 meet.

### Convair Head Due Here To Supervise Flying Wing

LaMotte T. Cohu, new president of Consolidated Vultee Aircraft Corporation, will come to Fort Worth next week to supervise personally the production plans for giant B-49 Flying Wings in Convair's Fort Worth plant.

Production date of the jet-propelled aircraft is considered only a "matter of months away."

The Flying Wings will be built in the same huge plant that is now rushing delivery of 95 mammoth B-36 bombers to the Air Force.

Both planes will be built concurrently with no slow-up in production, Coahu told the Star-Telegram Friday from San Diego.

#### Officials Quitting.

Production of the B49 will be by Convair on a subcontract with Northrop, designer of the eight-jet plane. Since the final contract has not yet been signed with the Air Force, the exact production schedule can not be announced at this time, Coahu stated.

Agreement to the subcontract was announced Thursday simultaneously with the announcement that Roland G. Mayer, Fort Worth

### IT'S BANNER TIME FOR CONFEDERATE FLAG SALES

BIRMINGHAM, July 23 (AP).—The sale of Confederate flags has skyrocketed here—and the Birmingham Chamber of Commerce reports the recent meeting of rebellious southern Democrats for the boom.

Letters and telephone calls from throughout the nation for the Stars and Bars have swamped flag dealers, chamber officials say.

One woman from Santa Barbara, Cal., wrote for "a lot of Confederate flags." She said, "There are hundreds of thousands of people in the West who will join in the states' rights fight."

Another flag-seeker from California said she was a Republican, but that didn't matter.

Still another woman from Brooklyn said she not only wanted the Confederate flag but the Alabama flag as well.

### No. 2 Air Force General Is Pleased With B-36 Production Job Here

Gen. Muir S. Fairfield reported approvingly Friday that "B-36 production is coming along fine."

The four-starred vice chief of the Air Force, on his third visit to the big Convair plant here, was up early for a brisk inspection trip afoot along the assembly line.

Reveille at Carswell Air Force Base had a special note in it at 5:20 a. m. as the men rolled out

and the word passed around hurriedly that the man next to the top boss of the Air Force was coming through. Salutes had an added snap.

Fairchild, accompanied by Brig. Gen. Robert W. Burns, 8th Air Force deputy commander, and Col. Alan D. Clark, commander of the base and of the 7th Wing, was driven first out on the ramp where five of the big "Baker-36s" are parked.

#### Chief Pilot Quizzed.

He talked with Capt. John D. Bartlett, assigned as chief pilot for the 8th Air Force in checking out pilots and crews in handling the big ship, and questioned him in detail regarding performance data.

jet plane. Since the main contract has not yet been signed with the Air Force, the exact production schedule can not be announced at this time, Cohu stated.

Agreement to the subcontract was announced Thursday simultaneously with the announcement that Roland G. Mayer, Fort Worth division manager of Convair, will retire Aug. 15.

Other resignations confirmed are those of J. M. Hassler, plant superintendent in Fort Worth, and E. E. Barbe, chief of plant protection.

Cohu stated that the plant's day-to-day operation would be directed by a five-man committee which includes R. J. Donnelly, chief of industrial relations; R. O. Ryan, R. C. Sebold, D. C. Burrow and M. L. Hicks.

The Convair president will divide his work between Fort Worth and the West Coast.

#### Delay in Retooling.

Cohu, who will confer with engineers here next week, said production of the Flying Wing will be delayed for retooling and changing of the plant's assembly plan.

"It will not be as big a job as required for the production of the B-36," Cohu stated. He also said that increase of personnel to handle the dual operation will "not be so great."

Selection of the Fort Worth plant for the double-barrel production of the world's largest airplanes was only natural, according to the Convair president.

"It is the finest big bomber plant in the world," Cohu declared.

As for the contract to deliver 95 B-36s to the Air Force, Cohu said he sees the possibility of continued building of the bombers after that contract is filled.

#### Other Jet Production.

"It has been doing so well in performance we are optimistic for its future," he explained. He also stated there is a possibility...

approaching Friday that "B-36 production is coming along fine." The four-starred vice chief of the Air Force, on his third visit to the big Convair plant here, was up early for a brisk inspection trip afoot along the assembly line. Reveille at Carswell Air Force Base had a special note in it at 5:30 a. m. as the men rolled out...

## Howell Will Quit as City Plan Engineer

Jack D. Howell, of 3608 Shelby Dr., city plan engineer and utilities supervisor, has resigned, effective Aug. 15, Public Works Director Thelin announced Friday.

Thelin said he was sorry to lose Howell, and his resignation was "accepted with regret." Thelin said it is "going to be very difficult to replace him."

Howell is resigning to take one of two positions offered him in Fort Worth.

He was employed in the city engineering department from 1926 to 1935. After employment with a private firm and three years' service in the Navy, he returned to city employment in December of 1945 as storm sewer engineer.

He was named plan engineer in 1946. In addition, he is advisor to the zoning board of adjustment and the zoning commission.

### THINK IT OVER

BY H. M. STANSIFER.

We complain about the prices but forget the services demanded.

### 'BIRTH OF A NATION'

## Star-Maker D. W. Griffith Dies at 73

HOLLYWOOD, July 23 (AP).—David Wark Griffith, 73, pioneer movie director and star-maker, died Friday.

Best known for his discovery of Mary Pickford and his famous "The Birth of a Nation," Griffith had been inactive in pictures for many years, but the legend of his early days never died.

He was stricken Wednesday night in his hotel suite and taken to a hospital Thursday, suffering from a cerebral hemorrhage.

He lost consciousness, and died at 7:24 a. m. in an oxygen tent.

## School Building Permit Issued

A building permit for \$111,900 was issued Friday by the city to the Fort Worth Independent School District Board for construction of a 70x74-foot addition to the South Hi-Mount Elementary School at 4101 Birchman. Paschall-Sanders Construction Company is the contractor.

### THE WEATHER

(By the United States Weather Bureau)

Sun sets Friday at 7:34. Sun rises Saturday at 5:37. Highest temperature here Thursday 98; highest a year ago 88. Lowest Friday morning 75; lowest a year ago 66. Barometer 29.99 steady.

Fort Worth and Vicinity—Partly cloudy and continued warm Friday afternoon through Saturday with scattered thunder-showers late Friday afternoon and night. Highest afternoon temperatures in upper 90s. Lowest Friday night in middle 70s.

West Texas (West of the 100th Meridian)—Partly cloudy, a few widely scattered thundershowers Friday afternoon, night and Saturday. Warmer Panhandle and South Plains Saturday.

East Texas (East of the 100th Meridian)—Partly cloudy Friday afternoon, night and Saturday. Scattered thundershowers in north and west portions Friday afternoon and night in east and south portions Saturday. Cooler extreme northwest portion. Moderate to fresh southerly winds on coast.

Chief Pilot Quizzed. He talked with Capt. John D. Bartlett, assigned as chief pilot for the 8th Air Force in checking out pilots and crews in handling the big ship, and questioned him in detail regarding performance data.

Clark showed him the plane christened "City of Fort Worth," which Bartlett expects to fly to New York next week for display at the dedication of Manhattan's new Idlewild Airport.

"We hope to send three others in formation flight over Idlewild during the Air Force review," Clark added.

Fairchild said he had no information as to the possibility that the new 8th Air Force, like its wartime predecessor the "Old 8th," might be sent to England for training, but he was positive that squadrons and groups will continue their rotated training missions both in Europe and the Far East.

#### Outlook Optimistic.

He expected to visit Barksdale Air Force Base at Shreveport and Eglin and Maxwell AF Bases in Florida Friday, on his swing eastward toward Washington after a flying inspection trip to West Coast bases. The air staff's vice chief was optimistic regarding prospects of the 70-group program authorized by Congress, but admitted "we're far from being there."

Fairchild was escorted through the Convair plant by Roland G. Mayer, retiring Convair division...

the newspaper release. He said he called the meeting at the request of Councilman Edwards, who is supporting Cowan. Deen said that he favored open meetings of the council and that he told members Thursday afternoon that the council should meet in an open session to hear the Arlington Heights delegation.

#### Open Sessions Favored.

Chapter 3 of the city charter provides that "all official meetings of the council shall be public."

But after the council voted in an open session to recess until later in the week the group immediately went into a closed session in Jones' office and then voted to adjourn until next Wednesday.

Deen said that the council members conduct themselves better in the open meetings.

The Arlington Heights delegation supporting Young was led by C. A. Blanton, manager of William Cameron Lumber Co. Turn to Council on Page 11.

## Postcards, 135,000 of Them, Strike Sparks in Campaign for Congress

Circulation of postcards bearing the signature of "F. Lanham" endorsing the candidacy of E. O. Gillam for Congress struck sparks Friday in county political ranks.

Speaking at the rally Thursday night at Capps Park, Congressman Wingate Lucas charged that Gillam was using a play on names to confuse the voters. Lucas said the postcards sought to imply that Fritz Lanham, former congressman, is supporting Gillam. Actually, he said, the name on the card is that of Frank Lanham, who was defeated in the race for justice of peace two years ago.

Lanham said Friday that 135,000 cards had been sent to voters in the five counties comprising the congressional district. The real estate man said he signs his name four different ways: "Frank M. Lanham Sr.," "Frank Lanham Sr.," "F. Lanham Sr.," and "F. Lanham."

His family and that of former Congressman Fritz Lanham are not related, he said, although both families came to Texas from North Carolina.

Gillam termed Lucas' accusation "about the worst trick I know of. If Frank Lanham wants to put his name on a card what's wrong with that?"

Gillam declared that Fritz Lanham has announced he would not endorse anybody. Gillam displayed a telegram from Herbert Krainich, president of the Soap and Detergent Manufacturers Association, which said, "We are pulling for you."

The county political candidates make their final appearance of the three-week tour Friday night at Marine Park.

Flood Halts Power. IOLA, Kan., July 23 (AP).—Waters of the rising Neosho River flooded the municipal power plant Friday, leaving most of this city of 8,000 population without electricity and water. Turn to Slayings on Page 10.

What every voter should know about the Democratic primary election Saturday:

Turn to page 8 for a list of polling places and the official ballot is on page 14.

Complaints of irregularities should be forwarded to County Democratic Chairman Elmo Irby, Dan Waggoner Bldg., phone 3-4347. Irby's office will be open until 7 p. m. Saturday.

Tabulation of returns will start in Commissioners Courtroom at 7:30 p. m. Saturday. It will be resumed at 9 a. m. Sunday and continue until 6 p. m. Incoming calls will be received at the courthouse during the tabulation.

The county tax office in the Courthouse will be open until 7 p. m. Saturday for convenience of voters who do not know the number of their precinct or who have misplaced poll tax receipts or exemption certificates. The phone number is 2-1351.

Complaints of irregularities should be forwarded to County Democratic Chairman Elmo Irby, Dan Waggoner Bldg., phone 3-4347. Irby's office will be open until 7 p. m. Saturday.

Tabulation of returns will start in Commissioners Courtroom at 7:30 p. m. Saturday. It will be resumed at 9 a. m. Sunday and continue until 6 p. m. Incoming calls will be received at the courthouse during the tabulation.

The county tax office in the Courthouse will be open until 7 p. m. Saturday for convenience of voters who do not know the number of their precinct or who have misplaced poll tax receipts or exemption certificates. The phone number is 2-1351.

Complaints of irregularities should be forwarded to County Democratic Chairman Elmo Irby, Dan Waggoner Bldg., phone 3-4347. Irby's office will be open until 7 p. m. Saturday.

Tabulation of returns will start in Commissioners Courtroom at 7:30 p. m. Saturday. It will be resumed at 9 a. m. Sunday and continue until 6 p. m. Incoming calls will be received at the courthouse during the tabulation.

The county tax office in the Courthouse will be open until 7 p. m. Saturday for convenience of voters who do not know the number of their precinct or who have misplaced poll tax receipts or exemption certificates. The phone number is 2-1351.

Complaints of irregularities should be forwarded to County Democratic Chairman Elmo Irby, Dan Waggoner Bldg., phone 3-4347. Irby's office will be open until 7 p. m. Saturday.

Tabulation of returns will start in Commissioners Courtroom at 7:30 p. m. Saturday. It will be resumed at 9 a. m. Sunday and continue until 6 p. m. Incoming calls will be received at the courthouse during the tabulation.

The county tax office in the Courthouse will be open until 7 p. m. Saturday for convenience of voters who do not know the number of their precinct or who have misplaced poll tax receipts or exemption certificates. The phone number is 2-1351.

Complaints of irregularities should be forwarded to County Democratic Chairman Elmo Irby, Dan Waggoner Bldg., phone 3-4347. Irby's office will be open until 7 p. m. Saturday.

Tabulation of returns will start in Commissioners Courtroom at 7:30 p. m. Saturday. It will be resumed at 9 a. m. Sunday and continue until 6 p. m. Incoming calls will be received at the courthouse during the tabulation.

The county tax office in the Courthouse will be open until 7 p. m. Saturday for convenience of voters who do not know the number of their precinct or who have misplaced poll tax receipts or exemption certificates. The phone number is 2-1351.

## ADMINISTRATOR IS PICKED FOR CITY-COUNTY HOSPITAL

Ross O. Urban, administrator of the Memorial Hospital in Corpus Christi, Friday was selected by a committee to replace Goldman Drury as administrator of City-County Hospital.

Urban, a World War II veteran who served overseas and has headed the charity hospital in Corpus Christi for the last two and a half years, was interviewed by members of the committee here a week ago.

"We feel that he is the man best equipped for the job, a man who will grow with the job," one committee member said.

The committee's action must be approved at a meeting of the City-County Hospital board to be called by Dr. D. M. Rumph, chairman. The committee naming Urban consists of Clay Berry and Star Williams and the chairman, Dr. Burke Brewster.

Since Drury's resignation, Mrs. Lee Swickheimer, the former Miss Dorothy Goff, has been acting administrator at City-County Hospital. Drury resigned on July 15 to become administrator of the Robert B. Green Memorial Hospital in San Antonio.

As head of the 168-bed City-County Hospital here, Drury received \$500 a month, plus \$50 a month for automobile expenses. Dr. Rumph said he believed the new administrator would make the same salary—"or at least it won't vary much." Under the present financial setup of requesting money from the county and city, the hospital board chairman said, "We can't pay our administrators what we'd like."

The Memorial Hospital in Corpus Christi has 108 beds, and is a new hospital.

What every voter should know about the Democratic primary election Saturday:

Turn to page 8 for a list of polling places and the official ballot is on page 14.

Complaints of irregularities should be forwarded to County Democratic Chairman Elmo Irby, Dan Waggoner Bldg., phone 3-4347. Irby's office will be open until 7 p. m. Saturday.

Tabulation of returns will start in Commissioners Courtroom at 7:30 p. m. Saturday. It will be resumed at 9 a. m. Sunday and continue until 6 p. m. Incoming calls will be received at the courthouse during the tabulation.

The county tax office in the Courthouse will be open until 7 p. m. Saturday for convenience of voters who do not know the number of their precinct or who have misplaced poll tax receipts or exemption certificates. The phone number is 2-1351.

Complaints of irregularities should be forwarded to County Democratic Chairman Elmo Irby, Dan Waggoner Bldg., phone 3-4347. Irby's office will be open until 7 p. m. Saturday.

Tabulation of returns will start in Commissioners Courtroom at 7:30 p. m. Saturday. It will be resumed at 9 a. m. Sunday and continue until 6 p. m. Incoming calls will be received at the courthouse during the tabulation.

The county tax office in the Courthouse will be open until 7 p. m. Saturday for convenience of voters who do not know the number of their precinct or who have misplaced poll tax receipts or exemption certificates. The phone number is 2-1351.

Complaints of irregularities should be forwarded to County Democratic Chairman Elmo Irby, Dan Waggoner Bldg., phone 3-4347. Irby's office will be open until 7 p. m. Saturday.

Tabulation of returns will start in Commissioners Courtroom at 7:30 p. m. Saturday. It will be resumed at 9 a. m. Sunday and continue until 6 p. m. Incoming calls will be received at the courthouse during the tabulation.

The county tax office in the Courthouse will be open until 7 p. m. Saturday for convenience of voters who do not know the number of their precinct or who have misplaced poll tax receipts or exemption certificates. The phone number is 2-1351.

What every voter should know about the Democratic primary election Saturday:

Turn to page 8 for a list of polling places and the official ballot is on page 14.

Complaints of irregularities should be forwarded to County Democratic Chairman Elmo Irby, Dan Waggoner Bldg., phone 3-4347. Irby's office will be open until 7 p. m. Saturday.

Tabulation of returns will start in Commissioners Courtroom at 7:30 p. m. Saturday. It will be resumed at 9 a. m. Sunday and continue until 6 p. m. Incoming calls will be received at the courthouse during the tabulation.

The county tax office in the Courthouse will be open until 7 p. m. Saturday for convenience of voters who do not know the number of their precinct or who have misplaced poll tax receipts or exemption certificates. The phone number is 2-1351.

Complaints of irregularities should be forwarded to County Democratic Chairman Elmo Irby, Dan Waggoner Bldg., phone 3-4347. Irby's office will be open until 7 p. m. Saturday.

Tabulation of returns will start in Commissioners Courtroom at 7:30 p. m. Saturday. It will be resumed at 9 a. m. Sunday and continue until 6 p. m. Incoming calls will be received at the courthouse during the tabulation.

The county tax office in the Courthouse will be open until 7 p. m. Saturday for convenience of voters who do not know the number of their precinct or who have misplaced poll tax receipts or exemption certificates. The phone number is 2-1351.

Complaints of irregularities should be forwarded to County Democratic Chairman Elmo Irby, Dan Waggoner Bldg., phone 3-4347. Irby's office will be open until 7 p. m. Saturday.

Tabulation of returns will start in Commissioners Courtroom at 7:30 p. m. Saturday. It will be resumed at 9 a. m. Sunday and continue until 6 p. m. Incoming calls will be received at the courthouse during the tabulation.

The county tax office in the Courthouse will be open until 7 p. m. Saturday for convenience of voters who do not know the number of their precinct or who have misplaced poll tax receipts or exemption certificates. The phone number is 2-1351.

What every voter should know about the Democratic primary election Saturday:

Turn to page 8 for a list of polling places and the official ballot is on page 14.

Complaints of irregularities should be forwarded to County Democratic Chairman Elmo Irby, Dan Waggoner Bldg., phone 3-4347. Irby's office will be open until 7 p. m. Saturday.

Tabulation of returns will start in Commissioners Courtroom at 7:30 p. m. Saturday. It will be resumed at 9 a. m. Sunday and continue until 6 p. m. Incoming calls will be received at the courthouse during the tabulation.

The county tax office in the Courthouse will be open until 7 p. m. Saturday for convenience of voters who do not know the number of their precinct or who have misplaced poll tax receipts or exemption certificates. The phone number is 2-1351.

Complaints of irregularities should be forwarded to County Democratic Chairman Elmo Irby, Dan Waggoner Bldg., phone 3-4347. Irby's office will be open until 7 p. m. Saturday.

Tabulation of returns will start in Commissioners Courtroom at 7:30 p. m. Saturday. It will be resumed at 9 a. m. Sunday and continue until 6 p. m. Incoming calls will be received at the courthouse during the tabulation.

The county tax office in the Courthouse will be open until 7 p. m. Saturday for convenience of voters who do not know the number of their precinct or who have misplaced poll tax receipts or exemption certificates. The phone number is 2-1351.

Complaints of irregularities should be forwarded to County Democratic Chairman Elmo Irby, Dan Waggoner Bldg., phone 3-4347. Irby's office will be open until 7 p. m. Saturday.

Tabulation of returns will start in Commissioners Courtroom at 7:30 p. m. Saturday. It will be resumed at 9 a. m. Sunday and continue until 6 p. m. Incoming calls will be received at the courthouse during the tabulation.

The county tax office in the Courthouse will be open until 7 p. m. Saturday for convenience of voters who do not know the number of their precinct or who have misplaced poll tax receipts or exemption certificates. The phone number is 2-1351.

What every voter should know about the Democratic primary election Saturday:

Turn to page 8 for a list of polling places and the official ballot is on page 14.

Complaints of irregularities should be forwarded to County Democratic Chairman Elmo Irby, Dan Waggoner Bldg., phone 3-4347. Irby's office will be open until 7 p. m. Saturday.

Tabulation of returns will start in Commissioners Courtroom at 7:30 p. m. Saturday. It will be resumed at 9 a. m. Sunday and continue until 6 p. m. Incoming calls will be received at the courthouse during the tabulation.

The county tax office in the Courthouse will be open until 7 p. m. Saturday for convenience of voters who do not know the number of their precinct or who have misplaced poll tax receipts or exemption certificates. The phone number is 2-1351.

Complaints of irregularities should be forwarded to County Democratic Chairman Elmo Irby, Dan Waggoner Bldg., phone 3-4347. Irby's office will be open until 7 p. m. Saturday.

Tabulation of returns will start in Commissioners Courtroom at 7:30 p. m. Saturday. It will be resumed at 9 a. m. Sunday and continue until 6 p. m. Incoming calls will be received at the courthouse during the tabulation.

The county tax office in the Courthouse will be open until 7 p. m. Saturday for convenience of voters who do not know the number of their precinct or who have misplaced poll tax receipts or exemption certificates. The phone number is 2-1351.

Complaints of irregularities should be forwarded to County Democratic Chairman Elmo Irby, Dan Waggoner Bldg., phone 3-4347. Irby's office will be open until 7 p. m. Saturday.

Tabulation of returns will start in Commissioners Courtroom at 7:30 p. m. Saturday. It will be resumed at 9 a. m. Sunday and continue until 6 p. m. Incoming calls will be received at the courthouse during the tabulation.

The county tax office in the Courthouse will be open until 7 p. m. Saturday for convenience of voters who do not know the number of their precinct or who have misplaced poll tax receipts or exemption certificates. The phone number is 2-1351.

Complaints of irregularities should be forwarded to County Democratic Chairman Elmo Irby, Dan Waggoner Bldg., phone 3-4347. Irby's office will be open until 7 p. m. Saturday.

Tabulation of returns will start in Commissioners Courtroom at 7:30 p. m. Saturday. It will be resumed at 9 a. m. Sunday and continue until 6 p. m. Incoming calls will be received at the courthouse during the tabulation.

The county tax office in the Courthouse will be open until 7 p. m. Saturday for convenience of voters who do not know the number of their precinct or who have misplaced poll tax receipts or exemption certificates. The phone number is 2-1351.

Complaints of irregularities should be forwarded to County Democratic Chairman Elmo Irby, Dan Waggoner Bldg., phone 3-4347. Irby's office will be open until 7 p. m. Saturday.

Tabulation of returns will start in Commissioners Courtroom at 7:30 p. m. Saturday. It will be resumed at 9 a. m. Sunday and continue until 6 p. m. Incoming calls will be received at the courthouse during the tabulation.

The county tax office in the Courthouse will be open until 7 p. m. Saturday for convenience of voters who do not know the number of their precinct or who have misplaced poll tax receipts or exemption certificates. The phone number is 2-1351.

Complaints of irregularities should be forwarded to County Democratic Chairman Elmo Irby, Dan Waggoner Bldg., phone 3-4347. Irby's office will be open until 7 p. m. Saturday.

Tabulation of returns will start in Commissioners Courtroom at 7:30 p. m. Saturday. It will be resumed at 9 a. m. Sunday and continue until 6 p. m. Incoming calls will be received at the courthouse during the tabulation.

What every voter should know about the Democratic primary election Saturday:

Turn to page 8 for a list of polling places and the official ballot is on page 14.

Complaints of irregularities should be forwarded to County Democratic Chairman Elmo Irby, Dan Waggoner Bldg., phone 3-4347. Irby's office will be open until 7 p. m. Saturday.

Tabulation of returns will start in Commissioners Courtroom at 7:30 p. m. Saturday. It will be resumed at 9 a. m. Sunday and continue until 6 p. m. Incoming calls will be received at the courthouse during the tabulation.

The county tax office in the Courthouse will be open until 7 p. m. Saturday for convenience of voters who do not know the number of their precinct or who have misplaced poll tax receipts or exemption certificates. The phone number is 2-1351.

Complaints of irregularities should be forwarded to County Democratic Chairman Elmo Irby, Dan Waggoner Bldg., phone 3-4347. Irby's office will be open until 7 p. m. Saturday.

Tabulation of returns will start in Commissioners Courtroom at 7:30 p. m. Saturday. It will be resumed at 9 a. m. Sunday and continue until 6 p. m. Incoming calls will be received at the courthouse during the tabulation.

The county tax office in the Courthouse will be open until 7 p. m. Saturday for convenience of voters who do not know the number of their precinct or who have misplaced poll tax receipts or exemption certificates. The phone number is 2-1351.

Complaints of irregularities should be forwarded to County Democratic Chairman Elmo Irby, Dan Waggoner Bldg., phone 3-4347. Irby's office will be open until 7 p. m. Saturday.

Tabulation of returns will start in Commissioners Courtroom at 7:30 p. m. Saturday. It will be resumed at 9 a. m. Sunday and continue until 6 p. m. Incoming calls will be received at the courthouse during the tabulation.

The county tax office in the Courthouse will be open until 7 p. m. Saturday for convenience of voters who do not know the number of their precinct or who have misplaced poll tax receipts or exemption certificates. The phone number is 2-1351.

Complaints of irregularities should be forwarded to County Democratic Chairman Elmo Irby, Dan Waggoner Bldg., phone 3-4347. Irby's office will be open until 7 p. m. Saturday.

Tabulation of returns will start in Commissioners Courtroom at 7:30 p. m. Saturday. It will be resumed at 9 a. m. Sunday and continue until 6 p. m. Incoming calls will be received at the courthouse during the tabulation.

The county tax office in the Courthouse will be open until 7 p. m. Saturday for convenience of voters who do not know the number of their precinct or who have misplaced poll tax receipts or exemption certificates. The phone number is 2-1351.

Complaints of irregularities should be forwarded to County Democratic Chairman Elmo Irby, Dan Waggoner Bldg., phone 3-4347. Irby's office will be open until 7 p. m. Saturday.

Tabulation of returns will start in Commissioners Courtroom at 7:30 p. m. Saturday. It will be resumed at 9 a. m. Sunday and continue until 6 p. m. Incoming calls will be received at the courthouse during the tabulation.

The county tax office in the Courthouse will be open until 7 p. m. Saturday for convenience of voters who do not know the number of their precinct or who have misplaced poll tax receipts or exemption certificates. The phone number is 2-1351.

Complaints of irregularities should be forwarded to County Democratic Chairman Elmo Irby, Dan Waggoner Bldg., phone 3-4347. Irby's office will be open until 7 p. m. Saturday.

Tabulation of returns will start in Commissioners Courtroom at 7:30 p. m. Saturday. It will be resumed at 9 a. m. Sunday and continue until 6 p. m. Incoming calls will be received at the courthouse during the tabulation.

What every voter should know about the Democratic primary election Saturday:

Turn to page 8 for a list of polling places and the official ballot is on page 14.

Complaints of irregularities should be forwarded to County Democratic Chairman Elmo Irby, Dan Waggoner Bldg., phone 3-4347. Irby's office will be open until 7 p. m. Saturday.

Tabulation of returns will start in Commissioners Courtroom at 7:30 p. m. Saturday. It will be resumed at 9 a. m. Sunday and continue until 6 p. m. Incoming calls will be received at the courthouse during the tabulation.

The county tax office in the Courthouse will be open until 7 p. m. Saturday for convenience of voters who do not know the number of their precinct or who have misplaced poll tax receipts or exemption certificates. The phone number is 2-1351.

Complaints of irregularities should be forwarded to County Democratic Chairman Elmo Irby, Dan Waggoner Bldg., phone 3-4347. Irby's office will be open until 7 p. m. Saturday.

Tabulation of returns will start in Commissioners Courtroom at 7:30 p. m. Saturday. It will be resumed at 9 a. m. Sunday and continue until 6 p. m. Incoming calls will be received at the courthouse during the tabulation.

The county tax office in the Courthouse will be open until 7 p. m. Saturday for convenience of voters who do not know the number of their precinct or who have misplaced poll tax receipts or exemption certificates. The phone number is 2-1351.

Complaints of irregularities should be forwarded to County Democratic Chairman Elmo Irby, Dan Waggoner Bldg., phone 3-4347. Irby's office will be open until 7 p. m. Saturday.

# Commencement Scheduled for 95

Ninety-five seniors graduating from summer high school will receive diplomas at commencement exercises in the W. P. McLean Junior High School open theater Aug. 6.

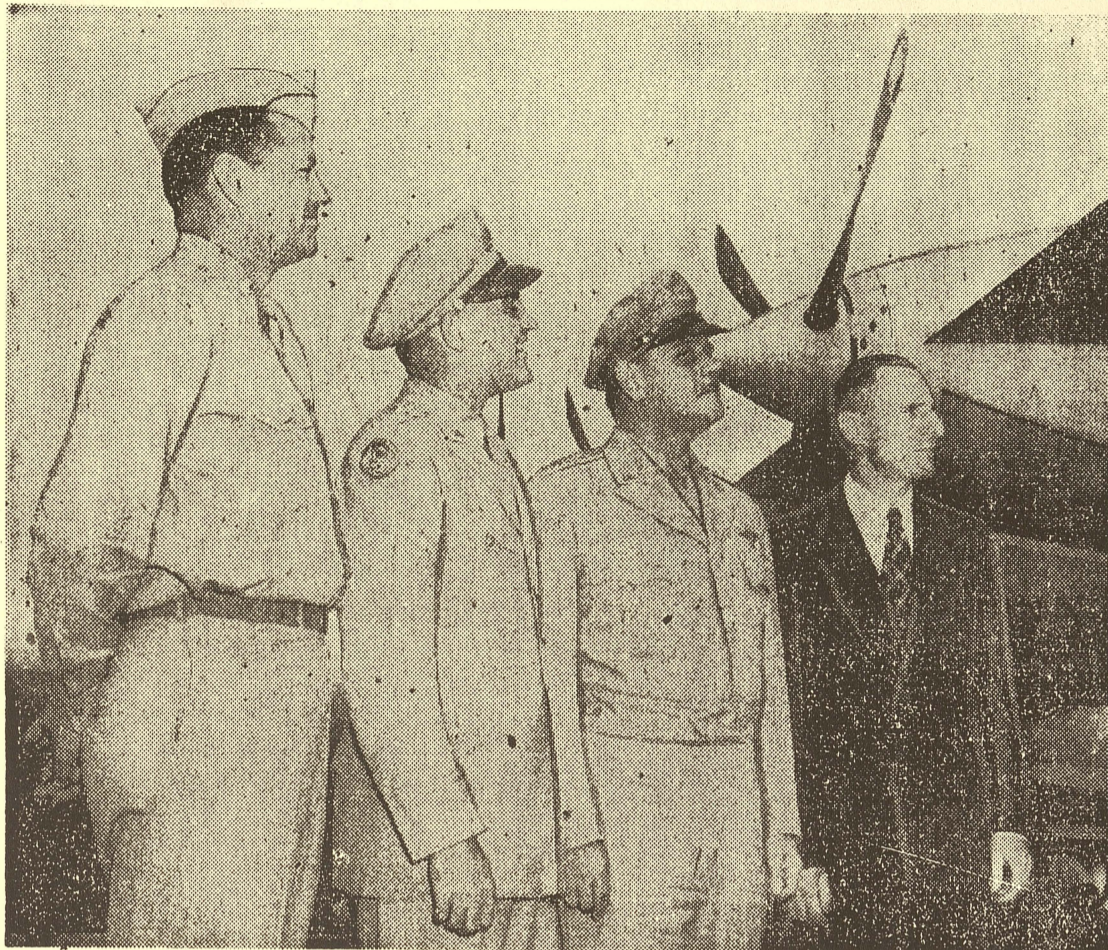
Superintendent of Schools Moore will make the graduation address. O. D. Wyatt, summer school principal at Paschal High School, has invited the principals of Fort Worth's high schools to present diplomas to their students.

Scholarship winners who will give the valedictorian and saluta-

## Consumption of Water Drops Off

Water consumption tapered off 280,000 gallons Thursday after pumping figures the day before had reached a high for the month. Water Director Stephens said that the 45,430,000 gallons pumped Wednesday was not high for the year, that mark having been passed several times in June.

Water level in city reservoirs was about normal Friday morning. The clear well tank was down 2½ feet, the South side tank, two feet, and the North Side reservoir was four feet from the full mark.



U. S. Air Force Photo.

**PRODUCTION ROLLING**—Satisfied with the "fine progress" in B-36 production, Gen. Muir S. Fairchild watched propellers being lined up Friday on one of the newest of the big birds "hatched." Left to right, are: Lt. Col. Beverly Warren, AF plant representative; Brig. Gen. Robert W. Burns, 8th Air Force deputy commander; Fairchild and R. G. Mayer, retiring Convair division manager.

## Slav Group's Meeting Here Is Prolonged

Prolonged discussion of by-law changes Friday delayed the scheduled business of the Slavonic Benevolent Order of Texas meeting at Hotel Texas.

A night session may be held to complete the election of officers and enable the delegates to return home in time to vote in Saturday's primary election.

The grievance committee headed by V. H. Barina of Smithville is to make its report after all by-law changes have been adopted or rejected. Several grievances entailing lengthy discussion are expected to be included in the report.

The delegates voted Friday to increase the limit of insurance which may be held by an individual from \$5,000 to \$7,500. Changes made Thursday included vesting of full financial responsibility in the treasurer and shifting of executive responsibility from the vice president to a full time president. They also voted to sell insurance policies of \$1,000 or under without a medical examination.

The work-minded convention will adjourn after election and the distribution of per diem and transportation money to the delegates.

## Fire Damage to Store Set at \$4,500

A Safeway Store at 2916 E. Rose-dale was damaged to extent of about \$4,500 by a two-alarm fire Thursday night.

Fire Investigator Dixon said the blaze probably started from an incinerator in which about 1,200 pasteboard cartons were burned

## FAIRCHILD

Continued from Page 1. manager, and Lt. Col. Beverly Warren, Air Force representative in the plant, and was particularly interested in one of the planes parked on the ramp in which the first combat guns are being installed.

Four of the B-36s on the 8th Air Force side of the field are ships delivered recently for operational use. The fifth, which flew in Thursday from Eglin AF Base, is one of four delivered for testing purposes.

Accompanied by Aide.

Mayer reported to Fairchild that Convair "expects to be up to its delivery quotas for both July and August."

Fairchild was accompanied by his aide, Maj. Al H. Joram. They left at midmorning for Barksdale AF Base.

The vice chief of the air staff was nominated by President Truman and jumped from a two-starred major general's rank to full general July 1. He had served as commander of the Air University at Maxwell AF Base since January 1946.

A pilot in World War I, he served in World War II as director of military requirements in Air Force headquarters as a member of the Combined Chiefs of Staff and Joint Strategic Survey Committee. He holds the DSM,

## Two Cases Bring Polio Total to 44

Two additional positive cases of polio Friday were diagnosed at City-County Hospital, bringing the total number of cases for the city to 44.

The latest polio victims are Mrs. Mary Bell Paul, 18, wife of C. W. Paul of 328 Strohl, and Sandra Casstevens, 12, of 3604 Pershing.

Other possible cases include

DFC, Purple Heart and Legion of Merit decorations.

Fairchild was the overnight guest of Amon Carter at the Fort Worth Club.

**SKIN IRRITATION?**  
QUICK RELIEF WITH MENTHOLATUM

SOOTHES, RELIEVES ITCHING... AIDS NORMAL HEALING

**MENTHOLATUM**

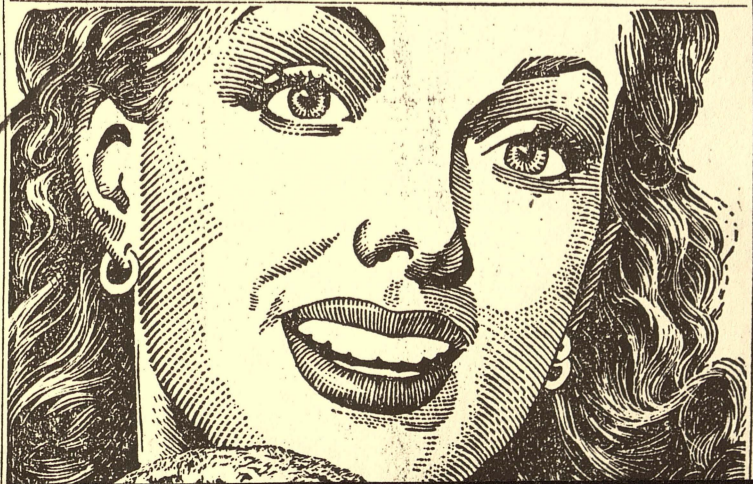
**LIN-X FLOOR WAX**  
POLISHES with SPARKLING BEAUTY

...it's ANTI-SLIP, TOO!

Pint **59¢** (Quart 98¢)

**SHERWIN-WILLIAMS**  
RESEARCH

ANTI-SLIP BEAUTY  
SELF-POLISHING WAX  
Guaranteed by Good Housekeeping



## LYDICK Roofing Company

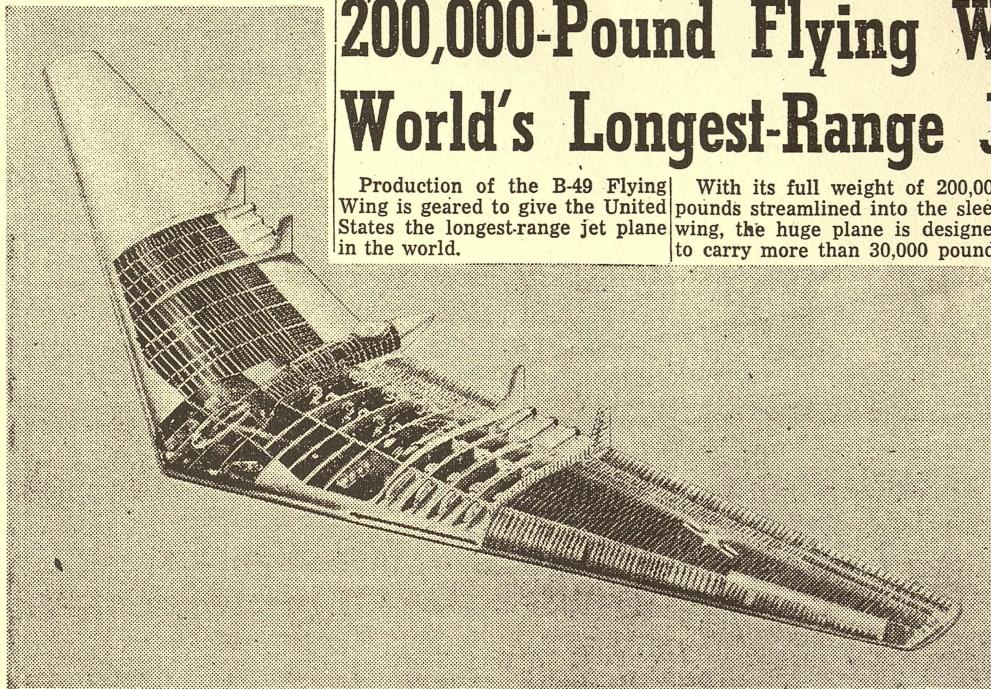
Over 57 Years in Texas

- ★ Re-Roofing
- ★ Attic Insulation
- ★ Asbestos Siding
- ★ Rubber & Asphalt Floor Tile

Phone 3-2313

Joe Lydick — Ned Lydick

# 200,000-Pound Flying Wing Is the World's Longest-Range Jet Plane



Production of the B-49 Flying Wing is geared to give the United States the longest-range jet plane in the world.

With its full weight of 200,000 pounds streamlined into the sleek wing, the huge plane is designed to carry more than 30,000 pounds

of bombs.

It is a new trend in heavy military airplanes and the move toward its production indicates that tests have shown the Flying Wing has distinct advantages over conventional planes for long range, high speed and high capacity missions.

Northrop engineers for years have claimed efficiency gains for the Flying Wing through elimination of drag produced by fuselage, tail and protruding engine nacelles. Their developing began 20 years ago, and the Flying Wing actually went into production during World War II.

Intensive flight test programs at Muroc Air Force Base have been conducted for both the first B-35 and the YB-49 experimental models. These tests are still shrouded in secrecy.

Several weeks ago, the Air Force released figures that showed the Flying Wing capable of carrying 30,000 pounds of bombs and of slicing through the air in the 500-mile-an-hour range. The Air Force also labeled the chevron-shaped giant as the world's longest ranging jet plane.

The B-49 weighs 88,000 pounds empty and more than 200,000 pounds when fully loaded.

Measuring 172 feet from wing tip to tip, the plane is seven feet thick in the center. All metal and without tail, the Flying Wing uses "elevon" controls as both elevators and ailerons.

A crew of 13 men includes pilot, co-pilot, navigator, radio operator, flight engineer, bombardier and gunner. There is also space for six off-duty crewmen.

Each of the eight General Electric turbo-jets develops about 4,000 pounds of thrust for the plane. At sea level and at most efficient speed (which has not been revealed), each pound of thrust equals one horsepower, thus yielding a total of 32,000 horsepower.

The plane's landing gear is fully retractable. It is tricycle with dual wheels, 5 feet 6 inches in diameter, on the main gear, and a single wheel, four feet 8 inches in diameter, on the nose gear.

**FORT WORTH'S NEW JET KING**—This drawing of Northrop's B-49 Flying Wing eight-jet bomber shows the center "walking room" space for the plane's crew, the fuel tanks on the forward part of the center section and the six bomb bays just back of the tanks. The Flying Wing, which will be built at Convair's Fort Worth plant, is designed for 500-mile-an-hour speed and is capable of carrying 15 tons of bombs.

## Draft Board Names Sent To Jester

Names of nominees for Tarrant County's four draft boards were slated to go to Governor Jester's desk Friday for approval, Lt. Col. Morris Schwartz, deputy state selective service director, announced.

The names up for approval include five members for each board. Also scheduled for simultaneous approval by the governor are four government appeal agents, four or more medical advisers for the draft setup, and advisers for registrants.

Each draft board, according to Colonel Schwartz, will appoint the necessary registrants required to keep the draft signing of the 19-25 year age group on schedule.

### Draft Plan Delayed.

The plan of draft registration in Tarrant County will be left solely to the local boards as long as they abide by President Truman's proclamation.

Brown Harwood, who nominated the draft board members for the county, said the Tarrant County plan would not be worked out until after the governor passes on the board nominees.

## MORE ABOUT CONVAIR

Continued from Page 1. ordered 30 of the 100-ton planes developed by Northrop.

Actual production of the B-49s in Fort Worth will be under the supervision of a Northrop engineering team headed by John K. Northrop, the company's president. It was in the Northrop offices in Hawthorne, Cal., that Cohu and Claude N. Monson, Northrop general manager, announced the sub-contract agreement Thursday.

Northrop currently is starting production of 23 Northrop Raider C-125 assault transports for the Air Force. It also is devoting much of its Hawthorne plant to other projects.

Current backlog of military orders for Northrop totals approximately \$100,000,000.

### Naval Academy in 1917.

Mayer, who plans to devote his time managing his 1,200-acre Here-

ford farm on Lake Worth, joined the Convair organization as production manager. He came to Fort Worth's plant in 1942 as assistant division manager. His promotion to manager came in 1944.

He went to work for Boeing Aircraft after his graduation from the University of Washington. Later he was in the Navy's engineering department in Washington until he entered the U. S. Naval Academy in 1917.

An expert in lighter-than-aircraft, Mayer was a construction engineer on the ill-fated dirigible Shenandoah. He also was one of the survivors of the Shenandoah disaster and saved the lives of part of the crew by maneuvering the nose-half of the ship into landing.

In addition to his record with the Shenandoah, Mayer made all major flights with the dirigibles Los Angeles, Macon and Akron.

## New Feed Mill In Operation; Offices Here

The newest and largest of the Burrus Texo Feed Mills, opened with all-day ceremonies here Thursday, was in full operation

## OBSTRUCTIVE THIEF

### Break in Own Home, Find Burglary

The two-week Mexico City vacation of Mr. and Mrs. [Name] [Name]

## Flier's Funeral Being Planned

Funeral arrangements were being made Friday morning for 1st Lt. John R. Gaddis, 23, of Handley, who was injured fatally Wednesday when his pursuit plane crashed near Dothan, Ala.

The engine of Gaddis' plane failed while he was on a routine