

Danforth Grants  
Available  
For Students  
See Page 9

# The Skiff

TEXAS CHRISTIAN UNIVERSITY ★ ★ ★ FORT WORTH, TEXAS

Keep Tabs  
On Initiation  
Of Honor Life  
See Page 3

VOL. 58, No. 2

FRIDAY, SEPTEMBER 25, 1959

12 PAGES

## Students Invade Tigers' Campus

★ ★ ★

★ ★ ★

★ ★ ★

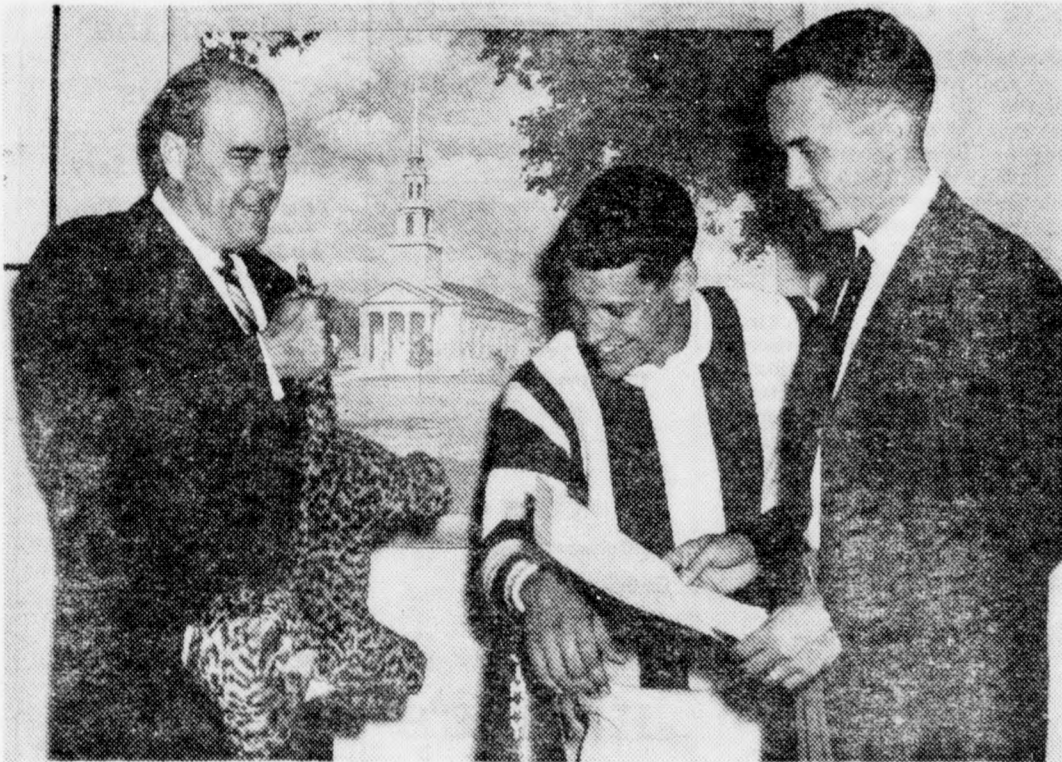
★ ★ ★

### Delta Sigma Pi Initiates Oct. 18

The TCU Chamber of Commerce has been approved for membership in Delta Sigma Pi, international business and social fraternity. A delegation represented the group at the twenty-second Grand Chapter Congress Aug. 31 to Sept. 3 in Cincinnati.

The Grand President, Homer T. Brewer, of Georgia, and the Executive Director, J. P. Thomson, of Oxford, Ohio, will initiate the chapter here Oct. 18 in Dan D. Rogers Hall. Five other chapters from Texas and Oklahoma will be represented at the initiation.

Six faculty members will be initiated with the students, including Dr. Ike Harrison, dean of the School of Business; Dr. John Wortham, professor of economics; Dr. Kenneth Herrick, professor of insurance; Charles P. Foote, assistant professor of accounting; Jerome Kerby, assistant professor of business administration; and Gene Lynch, assistant professor of finance.



Mayor Tom McCann of Fort Worth demonstrates how to treat the LSU Tigers tomorrow night while Head Cheerleader Jimmy Davis, Fort Worth senior, looks on. Student Body

President Jerry Johnson, Arlington Heights, Ill. senior, holds a proclamation just signed by Mayor McCann declaring this week to be "Beat LSU Week".

### Buses Leave SC Tomorrow For LSU Trip

By RUTH ANN KINDIGER

The longest student body trip in the history of TCU will get under way early Saturday morning. Buses will leave campus at 5:15 taking students to the T&P depot. The train will depart for Baton Rouge at 6:00.

The office of the Dean of Students reported that the first order of train tickets were sold Tuesday, and more were ordered. Game tickets were selling slow at the beginning of the week, but ticket office officials report that sales are picking up rapidly. The large number of tickets bought by ex-students and Fort Worth residents indicates the widespread interest in this inter-sectional game.

The Horned Frog Band will be making its first appearance in Baton Rouge. Their half-time program will feature a salute to LSU.

The train will arrive in Addis, a suburb of Baton Rouge, at approximately 5:30 p.m. Students will transfer to buses which will take them to the LSU campus. The game is scheduled for 8:00 p.m. so there will be time to eat and sight-see on the campus.

The buses reload and return to Addis as soon as the game is over, and the train will arrive back in Fort Worth at approximately noon Sunday. Meals may be purchased on the train.

## Student Leaders Plan Meet

An expected group of 140 student leaders will attend the first All-School Leadership Conference in Brownwood Oct. 23 and 24. This proposed annual conference will embrace all facets of campus clubs and organizations.

"Dr. Reagan Brown of Texas A&M is expected to teach a new technique, "Brainstorming," which has proved very valuable in bringing out fresh ideas," announced Jerry Johnson, president of Student Congress. This new technique will be utilized to a great extent in discussing one of the spe-

cific objectives of the conference—"To overcome traditional thinking and procedures in developing adequate interpersonal relationships between students and members of the faculty and administration."

Dr. Gaston Foote, minister of the First Methodist Church of Fort Worth has been designated as the "kick-off" speaker. Dr. D. Ray Lindley, president of TCU will speak on "Responsibility of Student Self-Government." Johnson will present his ideas of "A committee for a greater TCU." Transportation to Brownwood

will be by Greyhound Buses. The buses will leave campus at 2:00 p.m. Friday. A listening party is planned for Saturday afternoon to give those attending an opportunity to hear the TCU-Pittsburg football game.

Johnson encourages 100% attendance and reminds delegates of his platform statement of last spring—"Any student not willing to accept responsibilities relinquishes his right to criticize the policies by which he is governed."

### Wha' Hoppended?

During a recent student faculty meeting Business Manager L. C. White asked one of the students if he might see her afterwards.

"Uh oh," grinned the other students upon hearing him make the request. "Somebody didn't pay their bill."

"I'll set everybody straight so I won't embarrass the young lady," said Mr. White, "I think I owe her money."

### Rush for the 'Angels'

Candidates who wish to participate in Angel Flight rush Oct. 6 and 13 should write a letter giving their classification, high school honors and grades. The letter must be in the Angel Flight mail box in the Student Center not later than Oct. 1.

## 302 Pledged to Sororities

The 1959 sorority rush ended Tuesday Sept. 15 with 302 rushees receiving their bids in the Student Center Ballroom. Thus a party-filled week ended as the rushees became pledges.

Open rush began at noon Sept. 16 and will last until Oct. 7.

During the next twenty-one days, sororities that did not fill their quota are free to bid rushees that attended the first ten parties.

Out of 391 girls participating in rush, 302 pledged sororities. The pledge classes range in size from 23 in Delta Gamma to 39 in Kappa Delta.

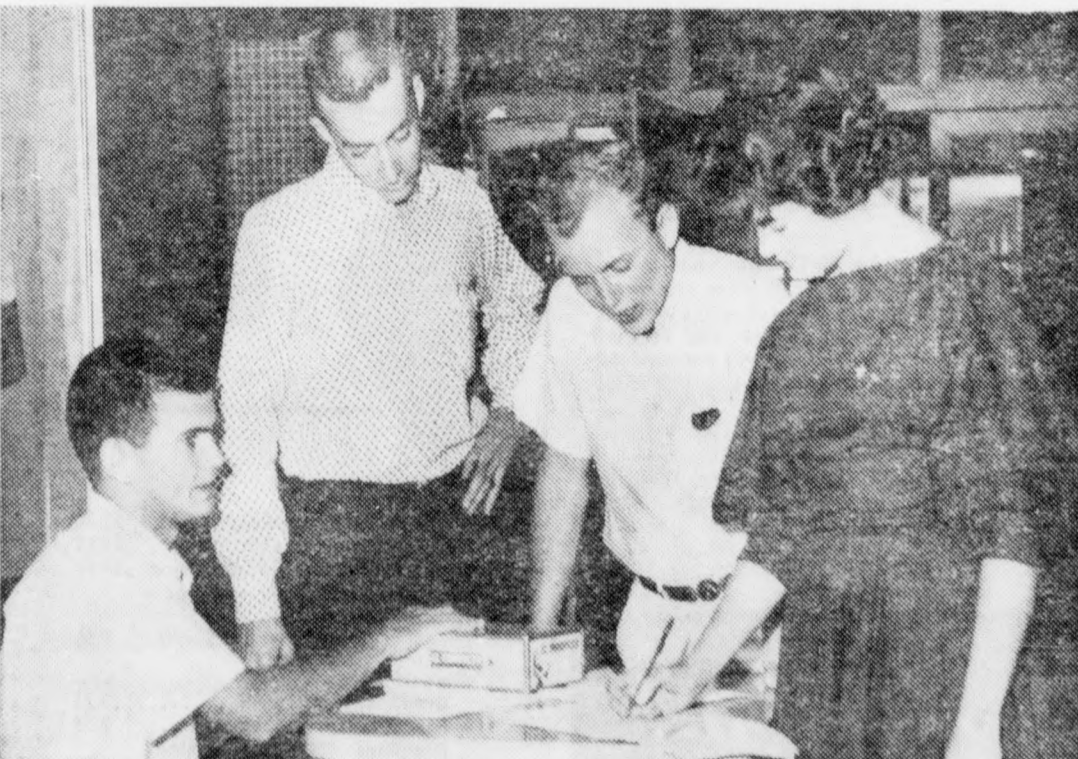
Others are:

Alpha Delta Pi, 37; Zeta Tau Alpha, 36; Kappa Alpha Theta, 34 and Kappa Kappa Gamma, 30; Pi Beta Phi, 27; Chi Omega, 26; Alpha Gamma Delta and Delta Delta Delta both with 25.

## Caraway to Head 845th AF Group

Robert R. Caraway, Fort Worth senior, has been named Group Commander of the 845th AFROTC Group for the 1959-60 school year. The Group was organized by the Air Force ROTC Detachment and has 30 officer assignments ranging from Staff Sergeant to Lieutenant Colonel.

The Third Squadron of the 845th AFROTC Group, known as the "TCU Grenadiers," will again this year, as in the past, practice to become a precision drill team. Commanded by Cadet Capt. Robert E. Treadaway, Fort Worth senior, the "Grenadiers" will exhibit their maneuvers at special functions on the campus during the school year and plan to attend the New Orleans Mardi Gras. Members of the team are volunteers from Air Science 1, 2, 3, and 4.



Miss Jean Irvin, Daingerfield junior, stops by the Student Congress table in the lobby of the student center to purchase her train ticket to LSU. Jeff Stevens, sophomore Congress rep-

resentative from Houston, signs her name on the list. Interested parties looking on are Bill Smith, center left, Hurst sophomore and Maurice Price, sophomore from Sherman.

### Christians Meet

All students interested in going to the Chi Delta Mu luncheons must be sure to purchase their tickets at \$1.50 per person at the Information Booth in the Student Center. Meal tickets may be used to obtain the luncheon tickets.

Chi Delta Mu is an organization open to all undergraduate students interested in Christian service, its purpose being to provide fellowship in this field.

### White to Speak At Convocation

Dr. Travis A. White, president of Midwestern University in Wichita Falls and a TCU graduate, will be the guest speaker at the annual fall convocation Thursday morning, October 1.

The assembly is scheduled for 11 a.m. in Ed Landreth Auditorium. Chancellor M. E. Sadler and President D. Ray Lindley will lead the academic procession.

Dr. White, president of Mid-

### Snack Bar Coffee Hour Relieved by Cafeteria

The cafeteria will be open until 9:30 a.m. on Tuesdays and Thursdays in an attempt to relieve the Snack Bar from its crowded conditions at the early morning coffee hour.

Only coffee and donuts will be served in the cafeteria after the regular time for serving breakfast.

On Monday, Wednesday and Friday mornings, it will close at the regular time of 9:15.

### Two Platoon System Adopted By New Chapel Choir Director

A new "two platoon system choir" is being instituted this year in order that more students may have an opportunity of singing and studying sacred choral music, according to William F. Guthrie, new choir director.

According to the "platoon system" the chapel choir will be divided into two units which will alternate at the chapel hour each Tuesday.

Mr. Guthrie urges all who have sung in chapel choirs to appear at rehearsal each Thursday from 11 to 12 in Weatherly Hall of Brite College. Vocal training will be included in the scope of the rehearsal each week, he said.

The chapel choir and the Singing Seminarians, directed by Dr. Gentry Shelton, plan to record two anthems which will be used on radio and television.

### Bell to Attend Meeting

Mrs. Dorothy Bell, director of the Speech and Hearing Retardation Clinic, will attend a meeting of the Texas Speech and Hearing Association in Austin, Oct. 1-3. She will be a panel speaker at the meeting.

Mrs. Bell attended a seminar on aphasia this past summer in Wichita, Kan.

### LAVONIA BELLAH DANCE LESSONS



Lots of dance parties to attend this fall. Hurry to Lavonia Bellah's now and see how fast you can learn the latest steps. Remember . . . at Lavonia Bellah's you pay only for lessons you take . . . no contracts. Don't put off . . . call or visit today.

PRIVATE OR CLASS

3 LOCATIONS

Bluebonnet Circle—WA 6-4621  
5101 Camp Bowie—PE 7-6626  
509 Main—ED 5-9543



Dr. Travis A. White

western University since 1956, is a native of Hammond, La., and is an active participant in civic and community life in Wichita Falls. He is currently a member of the Board of Higher Education of Christian Churches and state chairman of the campus Christian Life Committee of Christian Churches.

### Society Officers Elected for '59-'60

The Samuel E. Anderson Squadron of the Arnold Air Society, sponsored by the Air Force ROTC at TCU has installed new officers for the coming year. They are: Robert R. Caraway, Fort Worth senior, Commander; James D. Fitzgerald, Pampa junior, Deputy Commander; and Stanley S. Durham, Fort Worth senior, Operations Officer.

The mission of each Arnold Air Society Squadron is "to further the purpose, mission, tradition, and concept of the United States Air Force as a means of national defense, promote American citizenship, create a close and more efficient relationship among the Air Force ROTC Cadets."

Last year at the National Convocation, the TCU Squadron was named the most outstanding from

#### ★ HISTORICAL NOTE

In 1876 college tuition at Add-Ran College, later TCU, was \$40 for nine months.

among more than 170 participants and was presented the Maryland Cup for its achievements.

### Just off the Campus

and Ready to Serve You with All Your Sportswear Needs

- SWEATERS
- SKIRTS
- BLOUSES
- RAIN COATS
- CAR COATS
- PLAY PANTS
- SHIRT DRESSES
- COTTON KNITS

Andrea Stuart  
SPORTSWEAR  
2700 W. Berry

### Charms

add to your collection from the largest, most attractive stock in this area.

DISTINCTIVE Custom-crafted Greek Jewelry

HARDIE'S JEWELRY MANUFACTURING  
3001 W. Biddison at Bluebonnet Circle WA 3-7401



### COUNT ON SAMPLEYS To Pamper

the clothes you trust us with

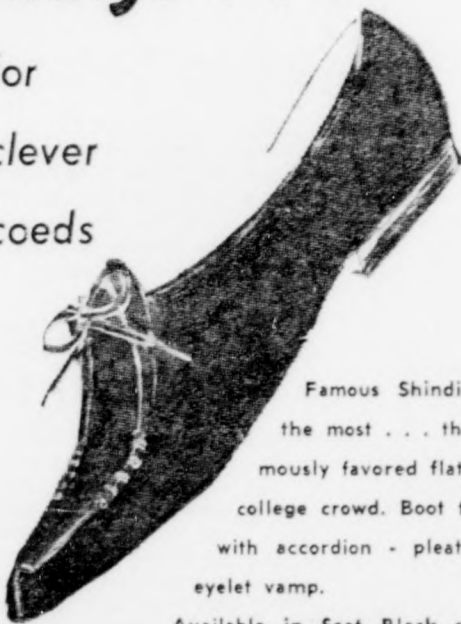
QUICK ONE-DAY SERVICE for your Cleaning and Laundry

### SAMPLEY'S TCU CLEANERS

3007 UNIVERSITY DR. "Your Clothes Insured While In Our Care"

### Shindigs . . .

for clever coeds



Famous Shindigs . . . the most . . . the unanimously favored flats of the college crowd. Boot type flat with accordion-pleated, one-eyelet vamp.

Available in Soot Black suede or Rust and Putty shades of Plush Pig.

MARGO'S

610 HOUSTON



New Goodies Like Mad!

### Record Town

3025 UNIVERSITY DR.

FORT WORTH'S NO. 1 RECORD STORE

### ATTENTION SENIORS!

#### THE TCU RING

by

#### HALTOM'S

A lifetime link with your Alma Mater that will recall many treasured memories. When you choose a Haltom class ring, you choose the official TCU ring . . . and you get outstanding craftsmanship, beautiful design and excellent service.

Haltom's rings are of durable 10KT gold, a choice of stones include synthetic ruby, blue sapphire or amethyst is available.



- Man's 12 1/2 Pennyweight Ring . 27.50
- Man's 12 Pennyweight Ring . . . 24.25
- Lady's 5 1/2 Pennyweight Ring . 19.50
- Class Pin with Year or Degree Guard
- Large . . . 10.50
- Small . . . 9.50

- Enrustings
- Greek Letters, each . . . . . 1.75
- Black Letters, each . . . . . 2.25
- Emblems (Masonic, Shrine, Elk, etc.) . . . . . 3.75

Prices subject to 10% Fed. Tax



Samples on Display—Orders Accepted at THE UNIVERSITY STORE, STUDENT CENTER

Starting With Men Dorms

# Honor Life To Be Initiated

By MAX JONES

After two years of careful study "Honor Life" is to be installed at TCU. This year "Honor Life" will be initiated primarily in the men's dormitories.

It is not an academic "Honor System" rather, a plan by which the students of TCU can govern themselves. "Honor Life" is a student led program that is eventually to be installed in all campus activities and all phases of campus life. It is meant to promote school spirit and install a sense of responsibility and pride in the student.

This program will be a tremendous one which will give the students much more voice in the administration policies of their school. Besides helping our school scholastically and spiritually, it will help us iron out many of our present problems and misunderstandings between students, faculty and administration.

The Honor Life Plan No. 1 is as follows:

In the fall term of 1959 there will be installed in the four men's dorms some thirty sectional councils. These councils will be created throughout dorms as a functional

means for the mutual cooperation of all residents of the section and for coordination of the life in all sections.

A general campus council composed of the counselors from each section council will guide the activities of the sectional councils, as well as handle disciplinary problems.

The sectional councils will be a natural channel for encouragement of friendships, orientation for new students, counseling, dorm discussions and devotions and the formation of intramural athletics. It is in these councils that "Honor Life" can thrive.

## 37 Clubs Introduced Themselves To Students at Activity Carnival

Thirty-seven clubs and organizations introduced themselves to students at the Activities Carnival in the Ballroom and Rooms 210 and 216 Thursday night. Miss Ann Stubbs, Cincinnati, Ohio senior was chairman and coordinator of the carnival.

Religious organizations, departmental clubs, Student Congress, the Activities Council and Descant erected booths, answered questions about their groups and signed up prospective members.

Entertainment for the evening was a talent show under the di-

rection of Miss Joyce Nicholson, Cameron senior. Decorations were arranged by Miss Sarah Loden, Wichita Falls senior. The hospitality committee and chairman Judy Rosick, Fort Worth senior, served refreshments.

## Business Educators to Confer

Business teachers, principals, counselors and others interested in business education in high schools and colleges from 23 counties will participate in a conference from 9:30 a.m. until noon tomorrow in Dan D. Rogers Hall.

The conference is sponsored by the Texas Business Education Association and the School of Business. The meeting is for the purpose of studying and making recommendations concerning curriculum proposals made by the

commission for the study of Business Education of the Texas Education Agency.

Discussing the topic, "What Effect Will the Recommendations of the Curriculum Studies of the Texas Education Agency Have on Business Education Accreditation in Your School," will be Dr. Gladys Bowman, Texas Wesleyan College; Miss Marjorie Keaton, TCU, president of Texas Business Education Association; and two Commission members, Miss Avis Deavers, Abilene and Mrs. Lucy May Jennings, TCU.

### 30 PER CENT DISCOUNT

On all cash and carry dry cleaning to TCU students who bring this ad.

**Earl Boynton Cleaners**

1420 W. Berry WA 7-9290

## Vacation in Hawaii

Miss Jean Irvin, Daingerfield junior, spent the first two months of the summer vacation in Hawaii. She visited other islands in the group.

## BANKS TELEVISION SERVICE

we repair car and portable radios, record players, hi fi's

1705 WEST BERRY . . . WA 3-1101

## THE CETAUR

Espresso Coffee House

8:00 till? Sun. 3 till?

2204 Forest Park Blvd.

flattering, fun-loving campus casuals by

*Nerene's*

6008 Camp Bowie Blvd.

Across from Ridglea Theatre



PE 2-2581

## Italian foods

--- enchanting delicacies served in  
Old World Atmosphere  
Cozy Private Booths  
Romantic Candlelight

★  
Make any date an exciting, long-to-be-remembered occasion when you dine at the nationally famous

ITALIAN INN

Authentic Italian Dishes



at college budget prices

PLANNING A PRIVATE PARTY? Reserve Our

"BUCA"

A delightful duplicate of an Italian Subterranean Restaurant.

Accommodates up to 100 guests

## ITALIAN INN

Diner's Club, American Express, Carte Blanche, Recommended by Duncan Hines

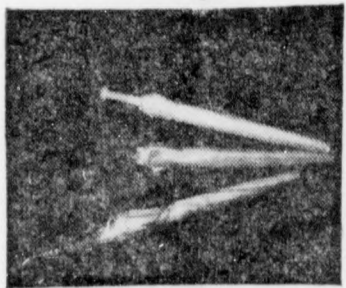
3132 EAST LANCASTER

JE 5-9117

## College Style Values during our 26<sup>th</sup> Anniversary Sale!



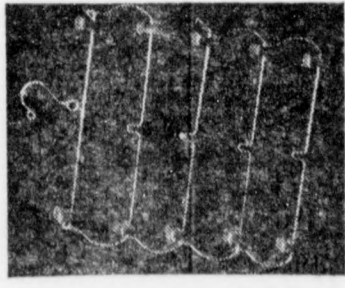
2517 W. Berry



**Umbrellas**

Complete selection of umbrellas—including pagodas, slim jims, 10 and 16-rib frames, 100% acetate rayon taffeta in scotch plaids, solids and borders. Reg. 5.00

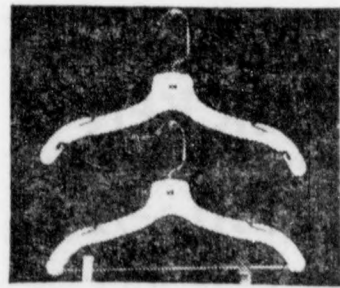
**2<sup>88</sup>**



**Skirt Racks**

Reg. 1.00 Skirt racks nickel chrome plated with plastic tipped pins. Holds 6 to 12 skirts.

**88<sup>c</sup>**



**Plastic Hangers**

Attractive heavy weight hangers with nickel plated revolving hook. Set of 8 for dresses, suits set of 4, with plastic tipped pins. Pastels and clear, Reg. 1.00

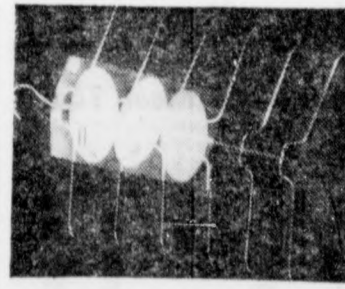
**88<sup>c</sup>**



**Autograph Hound**

Regular 1.00! Adorable Autograph Hound complete with pen. In assorted colors.

**88<sup>c</sup>**



**Blouse Racks**

Reg. 1.00 blouse racks hold 6 garments with plastic tipped swinging arms. Buy now and save!

**88<sup>c</sup>**



**Belt Rings**

Reg. 1.00 belt ring or belt racks—holds host of belts and ties. Shop early!

**88<sup>c</sup>**

Notions

# Welcome Back to the Campus

We're glad you've arrived and hope you'll visit the Pizza-Ria soon for Fort Worth's most delicious

## PIZZA

And FRIED CHICKEN TOO!



Dial  
ED 2-0280

Now enjoy three ways to order:

1. Pick up your order "to go." Dial ED 2-0280 and your order will be ready when you arrive - or drop in for quick service.
2. Eat here in our colorfully decorated dining area with candles on every table.
3. Take advantage of our two free deliveries to the campus every night. Phone ED 2-0280 by 5:30 p. m. for our 6:00 p. m. delivery or call by 7:30 p. m. for our 8:00 p. m. delivery for delicious, piping hot food served to your dormitory in handy containers.

Select from these Delicious Items

<b>PIZZA</b>	Large .....	.89
	Small .....	.65

The Same Wonderful Pizza Served at the Nationally Famous Italian Inn

<b>SUBMARINE SANDWICH</b> .....	.75
---------------------------------	-----

Includes Big-Eye Swiss Cheese, Salami, Ham on 1/2 Loaf French Bread Plus Your Choice of Our Own Italian Dressing, Mustard or Mayonnaise

### FRIED CHICKEN

Tempting Southern Style—Just Recently Added to Our Menu

1/4 CHICKEN .50	1/2 CHICKEN .75	WHOLE CHICKEN 1.35
-----------------	-----------------	--------------------

<b>GARLIC BREAD, 6 slices</b> .....	.40
-------------------------------------	-----

Hamburgers and Pizza Burgers .....	.35
------------------------------------	-----

Shrimp Pizza small .90 large .....	1.25
------------------------------------	------

Luscious Cheese Cake, slice .....	.25
-----------------------------------	-----

Now Open For Your Noon Meal, Too!

# THE PIZZA-RIA

1608 South University Drive

ED 2-0280

Owned and Operated by the Nationally Famous Italian Inn

3132 E. Lancaster



"Scotty Beats a Bongo" won Class A honors in the Houston Post's annual snapshot contest recently for Jerry A. Johnson, Houston junior. The picture also will be entered for grand prize competition.

### Forensic Group Initiates Members

Scheduled for numerous tournament competition, the debate team will be organized next week. Anyone who is interested in debate is invited to come to the first meeting in Room 105 of the Fine Arts Building at 8 p.m. Tuesday. The faculty sponsor, Professor Dave Matheny, pointed out that no tryouts are held and no previous debate experience is required to join the debate club.

The team will participate in about eleven tournaments this year. The first tournament will be held at the University of Kansas on Oct. 23 and 24. Nov. 6-7, a college debate tournament will be held on campus with about 25 schools represented. There also will be contests in extemporaneous speaking, oratory, television speaking, and a discussion question.

The topic of debate for the year will be: "Resolved: That Congress should have the power to Reverse Supreme Court Decisions." The discussion topic will be Labor-Management Relations.

WASH CLEAN WITH SPEED QUEEN  
DRY WITH LARGE CAPACITY DRYERS

WASH 20c DRY 25c

ALWAYS OPEN . . . COMFORTABLE LOUNGE AREA

Coin-O-Matic Laundry

2217 W. BERRY . . . across the street from Paschal High



### THERMO-JAC

T.C.U. Girl's love Thermo-Jac  
Jamaicas—Blouses—Skirts—  
Slims and Jackets!

A big selection near campus at—

the junior shop

3105 University at Berry

### Hours Set for Checks, Meal Tickets

Students wishing to cash checks from 7:30 a.m. until 1:00 p.m., and or obtain meal tickets at the Information Counter in the Student Center will have to observe the hours, announced Charles Pevellor, Student Center Director.

The maximum amount for a check is \$5.00. Checks for a larger amount may be cashed at the Business Office. No checks will be cashed or meal tickets issued at the Candy Counter in the Snack Bar.

#### ★ HISTORICAL NOTE

### Brite Sets Standards

In 1939, Brite College celebrated its silver anniversary and adopted standards for seminary organization.

### Style Tips from the CLYDE CAMPBELL UNIVERSITY SHOP

(one of a series)

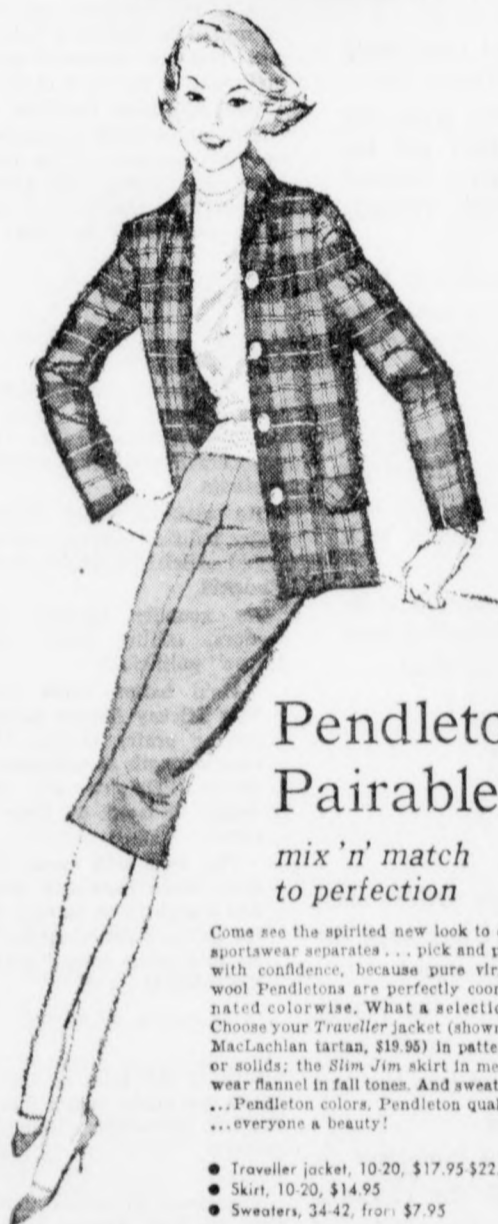
### Man Overboard

We have observed that sometimes when men go away for their first time to college, they go a little overboard and buy too many clothes of the wrong kind.

So our first advice to incoming Freshmen is not to buy a whole lot of fall clothes just right away, but to come down to Clyde Campbell University Shop and look around, buy a few things and try them out, then go at it slow and easy.

Your dollar will buy you more clothing pleasure that way.

**A DAVIS CO**  
905 MAIN ST.



### Pendleton® Pairables

mix 'n' match to perfection

Come see the spirited new look to our sportswear separates . . . pick and pair with confidence, because pure virginia wool Pendletons are perfectly coordinated colorwise. What a selection! Choose your Traveller jacket (shown in MacLachlan tartan, \$19.95) in patterns or solids; the Slim Jim skirt in menswear flannel in fall tones. And sweaters . . . Pendleton colors, Pendleton quality . . . everyone a beauty!

- Traveller jacket, 10-20, \$17.95-\$22.95
- Skirt, 10-20, \$14.95
- Sweaters, 34-42, from \$7.95

Shop Fridays 'til 9

### VISIT US FOR FAST SERVICE

and charming surroundings in our newly remodeled dining room

Delicious Mexican and American Cuisine

#### LUNCHEON

Meat, 2 Vegetables, Drink, Bread and Butter, Salad

ALL FOR ONLY 75c



2859 W. BERRY



### PAULINE MARTIN announces the opening of STUDIO OF CREATIVE ARTS 3021 COCKRELL - 1/2 Block South of Campus

#### for the college student

- Modeling and charm — for self-improvement and style shows
- Coaching in public speaking
- Bridge—beginners and intermediate classes—learn the most popular collegiate game
- Ballroom Dancing — be ready for those fabulous fall formals.

#### for the small fry

- Pre-kindergarten—3 and 4 year olds Morning
- Kindergarten—5 and 6 year olds —Afternoon
- Dancing and acrobatics included for all kindergarten participants
- Let us enroll your child in kindergarten while you attend classes

Regular Classes in Ballet, Tap, Acrobatics and Baton

Phone WA 4-6340—Studio, or WA 4-3028—Home

NEWLY DECORATED • ALL NEW EQUIPMENT • NEW ON THE CAMPUS  
ACCREDITED TEACHERS • AIR CONDITIONED • REGISTER NOW!

# EDITORIAL COMMENT

## Muchas Grass . . . . If

Contrary to a seemingly popular conception, grass does not grow on cement sidewalks.

With this fact in mind, it appears rather futile to continue watering the campus' sidewalks. With a little imagination, the offending sprinklers could be moved over a few notches. This would prevent the oft-recurring "wetting-down" of many students who are caught by the wide-swinging arc of the sprinklers.

Of course, those who are adept at running the 100-yard dash in 9.5 seconds, can outrun the "water monsters." However, after a hard tussle with the prof in philosophy or organic chemistry, who feels like dashing about like a Texas jack-rabbit.

A word to the wise would be: water the grass and not the students; the former will be green, the latter less mean.

## Beanie Boycott?

Remember when, not too long ago, autumn spotted our campus every day with hundreds of new beanies?

Remember when a sophomore's words, "Hey, freshman, square that beanie!" caused a panic in the hearts of all surrounding freshmen?

Yet . . . remember the fun and generous sense of security when freshman and sophomore, big and little Frogs spent their time together . . . helping each other . . . getting to know each other and their school?

Yes, we remember . . . but, of course, this is still a new phase for the freshman.

The freshman beanie is like a password that opens many unknown doors. That "gaudy little cap" should mean much more, so why let it get "lost"? Why throw it in the closet or under the bed or in the bottom drawer?

Also, freshmen have to wear that beanie only one month with little strings attached. Previous students wore it three months, with strings dangling from all sides!

So put that beanie back on and wear it proudly. It's college tradition . . . it's TCU.

## Library Lode

A vital part of a college education is learning to gain knowledge independently through the use of the library.

Naturally professors assist in starting students on the right path through specific assignments, and the library staff and assistants are always available to help. By the end of his college career, the student should be very familiar with the library and how to use the facilities that it houses.

In order that this goal of independent learning may be realized, one must begin early. Now, the start of a new school year, is a very appropriate time. Introduce yourself to the library and its contents if you are a new student, or renew an old acquaintance if you are a returning student.

The open stacks system is used in the Mary Coats Burnett Library. This means that students may look in the card catalog to find the books they need and the call numbers and then follow the directions to the various parts of the building where the particular book, according to its number, is to be found.

Whether for leisure time pleasure or for intensive research and study, the \$1,300,000 TCU library is ready to serve.

## The Skiff

The Skiff is the official student publication of Texas Christian University, published semi-weekly on Wednesday and Friday during college class weeks. Views presented are those of the student staff, and do not necessarily reflect administrative policies of the university. Represented for national advertising by National Advertising Service, Inc., 420 Madison Ave., New York, N.Y., Chicago, Boston, Los Angeles, San Francisco. Entered as second-class matter at the post office at Fort Worth, Texas, on Aug. 31, 1910, under the act of March 3, 1879. Subscription price, \$3.00 a year in advance.

Editor . . . . . Beth Morris  
 Assistant Editor . . . . . J'Nell Rogers  
 Business Manager . . . . . Lynn Farr  
 Photo Editor . . . . . Dale Johnson  
 Sports Editors . . . . . Gordon Pynes, Jack Harkrider  
 Faculty Advisor . . . . . E. H. Ferguson Jr.  
 REPORTERS—Emmett Brunson, Margie Cronin, Sue Goldsmith, James Harper, Bobby Hughes, Dale Johnson, Jerry Johnson, Ruth Ann Kindiger, Dollye Jo Luton, Harry Moreland, David Milton, Edrie Schneeberg, David Scott, Sandy Stokes, Robert Taylor, Ernest White.



## LITTLE MAN ON CAMPUS



"WITH WINN DRAFTED LETS GIVE BRO. HARRY HERE A BREAK AN' FIND HIM A PLEDGE-ROOMIE WITH THESE QUALIFICATIONS—SHIRT SIZE 16-35; PANTS 30-34; SHOES 9-C; COAT-40—"

## SW Campus Confidential

### A&M—

The Aggies' past football coach, Paul (Bear) Bryant, didn't care too much for the vulgar language used on or off the gridiron.

To curb this situation, he came up with a unique ruling — the players had to pay a 25 cent fine for each infraction.

The fund grew to a few hundred dollars.

"That's an awful lot of 'gosh durns.'"

### SMU—

The SMU Campus made an attempt to classify the different types of professors as seen by the average student.

One man, interviewed just before his eight o'clock class, said, "My average professor is a little round gump."

The early hour may have accounted for his singularly observant reply.

Another student stated that his professors were very nice fellows and he hoped that they would give him a "C" average at the end of the semester. He carefully asked that his name be used.

A rather representative reply was given by one student. He said that since he seldom attended class, he didn't think he had any grounds to make a comment on the subject.

### BAYLOR—

Someone down at Baylor, obviously feeling the need for a return to the sunshine and flowers of rural life, placed a full-grown cow and an honest-to-goodness out-house on the lawn of the Armstrong Browning Building.

The items were unappreciated by the occupants of the building since they think milk comes in wax cartons and they've had indoor plumbing for over four years.

### TEXAS—

A candidate for president of TU's student body once made public his beliefs that student government did not represent the students.

He claimed there were too many political cliques which hindered officials trying to work for students.

He roundly blasted student leaders, calling them "Mickey Mouse" politicians.

He'd better think twice. This Mickey Mouse party is getting pretty strong. Their true strength is unknown, of course. They're all lying doggo in front of their TV sets.

The time will come, however, when they will ARISE and march forth to take over the government, singing their terrible battle song, "M-I-C-K-E-Y M-O-U . . ."

Still in the land of the Longhorns, we might recall that a UT English professor claimed that modern literature is getting worse.

The good professor said that first we had "Desire Under the Elms," then "A Streetcar Named Desire," and next it will be "Desire Under A Streetcar."

He calls this type of literature "sewerrealism."

## THE LEDGER

# Safari to the Bayou

By BETH MORRIS

While wandering about in the Student Center this past week, one would notice quite a few signs pertaining to the atmosphere of the gridiron. The Frogs are after big game tomorrow, and our good friend, the mayor, made it official.

## PROCLAMATION

WHEREAS, we all know there ain't never been a real tiger cat natural growed in a Lousyana swamps; and,

WHEREAS, everybody knows we got real tough home growed hornied toads up here in Texas; but,

WHEREAS, some shrimp bait-cutters from our neighbor state of Looziana still claim they got big tigers as can eat us up next Saturday on a football field in Baton Rouge, Bayou Pom Pom; NOW, THEREFORE,

I, Thomas A. McCann, Mayor of the City of Fort Worth, Texas, for personal and public reasons, do hereby declare the week of September 21 through the 26th, and maybe the next day, 1959, to be:

"BEAT L.S.U. WEEK"

and call upon all citizens to get properly stirred up in some legal and appropriate manner and help our pore little Froggies send them pussy cat lovers back to cuttin shrimp.

IN WITNESS THEREOF, this proclamation is issued and executed under the seal of the City of Fort Worth on this 19th day of September, A.D. 1959.

(Signed)

Thomas A. McCann,  
 Mayor

\* \* \*

Even though the majority of the sports writers class the Frogs as the underdogs, many of us feel and hope the results of tomorrow night's game will be otherwise.

The spirit is impressive for this early in the season with everything from an order during the lunch hour "to drop that fork full of lumpy potatoes and join the pep rally" to torchlight parades in the evening.

This trail of spirit will be highlighted tomorrow as some 500 football enthusiasts get up with the chickens and head for the Pelican state. And when the strains of "Hold That Tiger" come drifting across the LSU campus, it won't necessarily mean choir practice.

Win or lose, it's nice to have a break between classes.





Twenty-five participants of TCU's annual Study Tour of Europe are shown at the London Airport on the first leg of their five-week journey. Dr. Marguerite Potter, associate professor of history, was the tour conductor. Accompanying her on the 11-country tour was Miss Elizabeth Youngblood, social director.

FORT WORTH'S FINEST  
**SHIRT  
LAUNDRY**

One Day  
Service

**NOBBY**  
CLEANERS and LAUNDRY  
2107 W. Berry

Beautiful STA-NU  
Dry Cleaning

**CAN YOU SELL?**

We have a fast-moving line of toys, and other merchandise. Full-time, part-time, male or female. Immediate delivery, layaway, and sales aids galore. Drop a post card with your name and telephone number to

P. O. BOX 15041  
FORT WORTH 19, TEXAS

We'll Call You

*For a better haircut ---*

You may have to go a little farther, so visit Paschal Barber Shop across from Paschal High on Berry

Quick Service—No Tiresome Waiting

**Paschal Barber Shop**

2217A-W. Berry Open 8 A.M.-6 P.M. Mon.-Sat.  
YOUR SATISFACTION IS MY GUARANTEE



**HONG KONG  
RESTAURANT**

3455 Bluebonnet Circle  
WA 4-5665

"We Specialize in Chinese and  
American Food"

Serving Daily 11 a.m.  
to 10 p.m.  
Fri. and Sat., until 11 p.m.

American Luncheon . . . . 75c  
Chinese Luncheons from . 85c

the **Coffin** is OPEN

the ESPRESSO COFFEEHOUSE

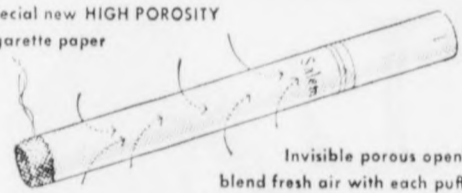
at 2962 Park Hill Drive

OPEN FROM 8:PM till the WEE Hours



**Salem's new cigarette paper discovery**  
"air-softens" every puff!

Special new HIGH POROSITY cigarette paper



Invisible porous openings  
blend fresh air with each puff for  
a softer, fresher, more flavorful smoke

Salem research creates a revolutionary new cigarette paper that breathes new refreshing softness and finer flavor into the smoke. Now, more than ever, there's Springtime freshness in every puff of a Salem. Smoke refreshed . . . smoke Salem.

Created by R. J. Reynolds Tobacco Company



• menthol fresh • rich tobacco taste • modern filter, too

*NOW MORE THAN EVER* **Salem refreshes your taste**

## Danforth Fellowship Open For 3 TCU Candidates

Mr. B. H. Proctor, named Liaison Officer to the Danforth Foundation, will nominate two or three candidates from TCU for 1960 fellowships. These appointments are fundamentally "a relationship of encouragement" throughout the years of graduate study.

The Danforth Foundation is an educational foundation located in St. Louis, Mo. It invites applications for the ninth class (1960) of Danforth Graduate Fellows from senior men and recent graduates preparing themselves for a career of college teaching and planning to enter graduate school in September, 1960, for their first year of graduate study.

The Foundation welcomes applicants from the areas of natural and biological sciences, social sciences, humanities and all fields of specialization to be found in undergraduate study.

As listed in the announcement from the Foundation, candidates must be of outstanding academic ability, with personality congenial to the classroom. They must possess integrity and character,

including serious inquiry within the Christian tradition.

All applications, including the recommendations, must be completed by January 31, 1960.

Any student wishing further information should get in touch with Mr. Proctor.

## Rally And Dinner To Precede Game

The TCU Ex-Student Association plans a "Beat LSU Rally" and "Beat the Tigers" Buffet dinner in Baton Rouge, La., tomorrow afternoon from 4:15 to 6:15 p.m. in the Continental Room of the Belmont Motor Hotel.

Athletic Director Dutch Meyer

## Company Spokesmen To Interview Seniors

Interviews of seniors for career jobs will begin Oct. 12. Dates for company representative interviews on campus will be posted on campus bulletin boards one week in advance.

Freshmen who are interested in part time work are urged to visit the Placement Bureau. Office hours are: 9 a.m. to 12 noon, 1 p.m. to 4:30 p.m. Saturday office hours are 9 a.m. to 12 noon.

will be the main speaker. Paul Ridings, B.A. '38, will lead the Fort Worth Frog Club fans in a rousing football rally.

Taylor Moore, B.S. '49, says that approximately 150 persons have made reservations for the come-and-go buffet.

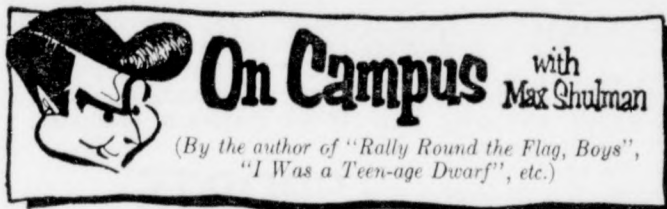
## University Represented by Sowell

Dr. James Sowell, executive director of the University Development, is in Akron, Ohio and Pittsburgh, Pa., this week contacting various funds and foundations on behalf of the University.

Dr. Sowell is being interviewed in two cities by the Firestone Tire and Rubber Co., B. F. Goodrich

Tire and Rubber Co., Alcoa Aluminum, Pittsburgh Plate Glass, Rockwell Fund and Westinghouse Electric Co.

The purpose of these interviews is to learn if these foundations are interested in offering scholarships or contributions for buildings and medical research at TCU.



### FASTER, FASTER!

College enrollment continues to spiral upward. The need for more classrooms and more teachers grows more desperate daily. But classrooms, alas, do not spring up like mushrooms—nor teachers like May flies. So what must we do while we build more classrooms and train more teachers? We must get better use out of the classrooms and teachers we now have. That's what we must do.

This column, normally a vehicle of good-humored foolery, will today forsake laughter to examine the crisis in higher education. My sponsors, the makers of Philip Morris Cigarettes, as bonny a bunch of tycoons as you will see in a month of Sundays, have given cheerful consent to this departure. Oh, splendid chaps they are—the makers of Philip Morris, fond of home, mother, porridge, the Constitution and country fiddling! Twinkly and engaging they are, as full of joy, as brimming with goodness, as loaded with felicity as the cigarettes they bring you in two handy packages—the traditional soft pack and the crushproof flip-top box.

How can we make better use of existing campus facilities? The answer can be given in one word—*speedup!* Speed up the educational process—streamline courses. Eliminate frills. Sharpen. Shorten. Quicken.



Following is a list of courses with suggested methods to speed up each one.

PHYSICS—Eliminate slow neutrons.

PSYCHOLOGY LAB—Tilt the mazes downhill. The white mice will run much faster.

ENGINEERING—Make slide rules half as long.

MUSIC—Change all tempos to allegro. (An added benefit to be gained from this suggestion is that once you speed up waltz time, campus proms will all be over by ten p.m. With students going home so early, romance will languish and marriage counsellors can be transferred to the Buildings and Grounds Department. Also, houses now used for married students can be returned to the School of Animal Husbandry.)

ALGEBRA—If X always equals twenty-four, much time-consuming computation can be eliminated.

DENTISTRY—Skip baby teeth—they fall out anyhow.

POETRY—Amalgamate the classics. Like this:

*Hail to thee blithe spirit  
Shoot if you must this old gray head  
You ain't nothin' but a hound dog  
Smiling, the boy fell dead*

You see how simple it is? Perhaps you have some speedup ideas of your own. If so, I'll thank you to keep them to yourselves.

© 1959 Max Shulman

The Philip Morris Company, makers of Philip Morris, Marlboros and Alpine, have no interest in speedup. We age our fine tobaccos slow and easy. And that's the way they smoke—slow and easy and full of natural tobacco goodness.

## Dyed-to-Match Sweater and Skirt Set



Seven Smart Colors

ORCHID BLUE BEIGE AQUA GREEN ROSE CORAL

Set 10.75 Sizes 8 to 16

Save 30% to 60%

Louis Fashions

2905 W. Berry

"A Factory Outlet Dress Shop"

## T.C.U.

Adults .75 Kids .25

MCW presents CARY GRANT EVA MARIE SAINT JAMES MASON

ALFRED HITCHCOCK'S "NORTH BY NORTH WEST"

## HELD-OVER

2ND GREAT WEEK



The Master of Suspense tells his greatest tale!

TECHNICOLOR

"NORTH BY NORTH WEST"

## Ivy Shirts

tapered body long tail

Select yours from the latest prints and knits.

Justin's Men's Shop

2903 W. BERRY



WA 6-4220



Announcing the

FROG ROOM CAFETERIA

--- your quickest, most convenient place for off-the-campus eating

### BREAKFAST

1 country fried egg  
2 strips bacon or sausage pattie  
toast  
jelly

29c

### LUNCH

your choice of meat  
3 vegetables  
rolls, butter  
iced tea or coffee

65c

and lots of refreshing fountain treats too



ON THE DRAG

REX McINTURFF, Mgr.

# Top Shot Gets Top Spot

The Army ROTC Rifle Team, 1959 Southwest Conference Champions, will be headed by Cadet Captain Joe Huddleston, Fort Worth senior, this year. Huddleston has been a member of the rifle team for the past three years and has received the 1958 Fort Worth Rifle and Pistol Club Award.

Other returning members of the rifle team are Ray Leuty, Fort Worth senior, Gaylord Tate, Muleshoe senior, and Willis Murphey Jr., Fort Worth junior.

The rifle team will fire their Southwest Conference matches in co-ordination with the football games, either firing the match the night or morning before the game.

Plans are also being made for the team to fire at the Mardi Gras again this year. They placed second in the match last year.

The team will be supervised by M. Sgt. Clifford R. Livingston.

# Annual Parent's Day Scheduled October 17

Saturday, Oct. 17, has been the deans and professors, noon designated as "Parent's Day" on luncheons by various groups and campus. All parents will take part in special activities with the students. The day will be climaxed by an All-University Banquet honoring Activities will include meeting parents.

### ★ HISTORICAL NOTE

Classes in embroidery were taught young ladies who attended Add-Ran College, forerunner of TCU, in its earliest years.

## FROSH

Continued from Page 12 and rushers last fall. He's the brother of Frog halfback, Yank Terrell. Another is Freddy Floyd, halfback from Midlothian, brother of All-America tackle, Don Floyd, the varsity captain. Freddy though, is a bit smaller than his older brother, tips in at 155, while Don weighs 220.

Pat Fraley, Sweetwater end, is the younger brother of former All-SWC defensive star, Ronald Fraley.

Several local schoolboy stars are also out for Taylor's club. These include Bob Seymour from Paschal, who is noted for his bruising power from the fullback post. Also there is Gray Mills, the quarterback who guided Carter Riverside to the District 4A-5 title last fall.

Out of some 35 freshmen aspirants, all are from Texas with the exception of 200-pound tackle Jerry Newell, who hails from Ogden, Utah.


## SPORTS

Continued from Page 12

with a field goal. The next year they each kicked a field goal to tie 3-3. Then, during the Sammy Baugh era in the 1935 Sugar Bowl game, it was oh so close. The Purples won it, 3-2. Sounds almost like someone homered in the bottom of the ninth to break up a tight pitching duel. LSU won the last meeting in 1943, 14-0.

### New Prof Added

Among the new professors joining the department of English staff this fall is Miss Ann Gossman, an assistant professor of English.



Complete Service  
For American and  
Imported Autos

### EUROPEAN-AMERICAN AUTO SERVICE

Jim Deering Jr.—John Johnson

3321 W. Rosedale Phone PE-2-2031  
West Freeway between Montgomery and University Dr.

THIS LABEL

## WASHER BROS.

*Masters of English*

MEANS STYLE  
AND QUALITY  
UNSURPASSED  
ANYWHERE

# Do You Think for Yourself?

(SHARPEN YOUR WITS ON THIS!\*)



If you saw a girl in a bathing suit on a ski slope, would you say, (A) "What—no skis?" or (B) "Cold?" or (C) "The pool closed three months ago," or (D) "Stay right here—I'll get the guard!"

A  B  C  D

## An Important Lesson To Learn

--- if you're Particular about  
**YOUR SHIRTS!**

Every college man learns sooner or later that HILL'S is his best bet for the best laundered shirts in town. Bring one or a bundle, sport knit, or dress, and learn this lesson the easy way.



ONE-DAY SERVICE

## Hill's Dry Cleaners

and BACHELOR LAUNDRY  
2856 W. BERRY  
The friendly white shop between the Fire Hall and Safeway Store

## SMU INVITES TCU

to hear the

## KINGSTON TRIO

at the

### S.M.U. COLISEUM, DALLAS

Friday, Oct. 2, 8:30 P. M.

ORDER YOUR TICKETS NOW  
\$1.50 each plus 25c mailing charge per order  
ALL SEATS RESERVED  
USE THIS ORDER BLANK

---

TO: Student Center Ticket Office, S.M.U., Dallas, Texas

FROM: Name .....

Address .....

City ..... State .....

Please send ..... reserved seat tickets for Kingston Trio. Enclosed is \$1.50 per ticket plus 25c handling charge per order. — PLEASE SEND CHECK OR MONED ORDER —

Do you think the statement "It's always darkest before the dawn" is (A) an astronomical truism? (B) a good reason for getting home early? (C) a piece of hopeful philosophy? (D) an argument for night watchmen?

A  B  C  D

Do you think that a man who can pole-vault 16 feet but doesn't like to, should (A) go out and do it anyway? (B) keep the whole thing to himself? (C) do a bit of self-analysis on why he doesn't like to go so high? (D) have the bar set lower?

A  B  C  D

When you choose a filter cigarette, do you (A) ask all your friends, and take their word for what's best? (B) take the one that makes the loudest claim? (C) investigate the facts, then use your own judgment? (D) go for the filter that gives you taste plus filtering?

A  B  C  D

smoke VICEROY. They know only VICEROY has a *thinking man's filter*—the filter with more research behind it than any other . . . the filter that changed America's smoking habits. And only VICEROY has a *smoking man's taste*.

*\*If you have checked (D) in three out of four questions, you're pretty sharp . . . but if you picked (C)—man, you think for yourself!*



It's a wise smoker who depends on his own judgment, not opinions of others, in his choice of cigarettes. That is why men and women who think for themselves usually

## The Man Who Thinks for Himself Knows —

ONLY VICEROY HAS A THINKING MAN'S FILTER... A SMOKING MAN'S TASTE!

©1959, Brown & Williamson Tobacco Corp.

# BENGALS

Continued from Page 12

eyed group gave up only three touchdowns and a field goal last season and had Rice completely boxed up a week ago.

Dietzel's bayou boys work from the T formation, using a man in motion and flankers. Cannon was put to good use in the opener, with off-tackle slants, after being used as the man in motion and with wide pitchouts.

Martin is expected to field the same eleven which opened with Kansas. The Purples are in top physical shape, coming out of their 14-7 win with no serious injuries.

No doubt the Tigers hold a wide edge over the Christians on paper but things figure to be much closer when they come to blows down on the gridiron of Tiger stadium in Baton Rouge tomorrow night.

# CONTEST

Continued from Page 12

the 28-27 win of Oregon over Stanford offered no problem.

Only two contestants predicted ties, John King and Sam Johnson picked Kentucky and Georgia Tech to finish even.

Since a Skiff was not published Wednesday, the football contest is in today's paper and the deadline for entries is 6 p.m. Friday.

parents visiting?

make their reservations today  
TV, breakfast bar, room service

## HI HO MOTEL

4 blocks south of Berry  
on North-South Expressway  
WA 6-0271

Complete Sports Equipment  
TEAM OR INDIVIDUAL



2704 W. BERRY

# U.S. OIL

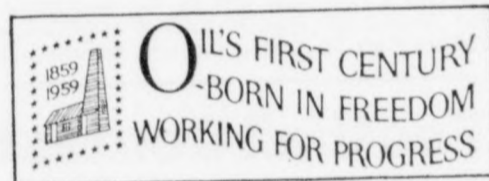
*Indispensable in our way of life...  
vital to our national defense*

In the 100 years since the drilling of the first oil well in the United States, the usefulness of petroleum has been often demonstrated in many ways . . . It is an economical and efficient source of energy and a raw resource convertible through petrochemistry into innumerable useful materials. . . . It is indispensable in our way of life, and vital to the national defense.

It is comforting to know that today's reserves are ample for today's needs. And if incentives to undergo the heavy risks involved are continued, there is no doubt that more oil will be discovered and produced to replace the oil we use . . .

The United States has found, produced, refined, and used more oil than any other nation. This has made petroleum products a feature of the abundant American life. Americans use more petroleum products than any other people on the globe.

The past is prologue to the future. During its second century, oil can serve you and your grandchildren, and the nation, as well or better than ever before.



**WEDGWOOD**  
RIDING ACADEMY  
• Horse Rentals • Hay Rides  
• Riding Lessons  
CALL AX 2-9921

a modern shop  
offering the finest  
barber service

### FOX BARBER SHOP

2 blocks east and 1/2 block  
south of Dan D. Rogers Hall  
and across Berry from Cox's.  
3028 Sandage . . . WA 7-9061

## Ray Neighbors Drug Store

"Let's Be Neighborly"

Phone WA 7-8451  
1555 W. BERRY ST.

a Swingline  
Stapler no  
bigger than a  
pack of gum!

98¢  
(Including 1000 staples)



### SWINGLINE "TOT"

Millions now in use. Unconditionally guaranteed. Makes book covers, fastens papers, arts and crafts, mends, tacks, etc. Available at your college bookstore.

SWINGLINE  
"Cub" Stapler \$1.29



Swingline INC.  
LONG ISLAND CITY, NEW YORK, N. Y.

The Humble Company, incorporated in 1917, has participated in the development of new and better ways to find and produce oil, and in the research that has improved petroleum products and discovered countless new uses for oil and natural gas. Humble is a major producer of U. S. oil, with production extending all across the southern tier of states from

Florida to California. Marketing operations are carried on in Texas, New Mexico and Arizona. Humble's Baytown refinery, near Houston, is one of the great refineries of the world. (Humble Pipe Line Company, a major transporter of crude oil and finished products, operates more than 9000 miles of pipe lines in Texas.)



HUMBLE OIL & REFINING CO.

# CONFERENCE CHAMPS CLASH

★ ★ ★

★ ★ ★

★ ★ ★

## Sports Lines

By GORDON PYNES

Greek mythology has it that Hercules was the world's mightiest man, befriended by the Gods and that he could feel no pain.

Louisiana mythology says that Billy Cannon is the world's mightiest man, can do no wrong and has a few influential friends himself down in the bayou country.

No doubt Hercules was a tough hombre but his modern counterpart from LSU is just as tough and probably faster. The Greek hero never had the benefit of the stop watch, but Cannon has recorded some hundred-yard dashes in 9.5 seconds, which is moving for a 215-pounder. The big Louisianan, who attributes much of his success to weight-lifting, can press 270 pounds above his head . . . that's strength.

Selected for everybody's All-American team last fall, the big guy got off to a good start last week in his bid to repeat. Scouting LSU on your TV last Saturday I'm sure you noticed that he's everything they claim.

Our big hope is that the Froggies will prove Hercules was the better man after Saturday night's game in Baton Rouge.



BIG PANTHER . . . Going Tiger hunting

## Powerful Bengals Rated Nation's Top Grid Team

Coach Abe Martin takes his Froggies on a big game hunt tomorrow in the bayou country of Louisiana. The game is the biggest in the nation for this weekend with Louisiana State's Bengal Tigers, the nation's No. 1 football team, taking to the field to meet the Frogs.

A sellout crowd of near 70,000 is expected to be on hand tomorrow night for the kickoff, set for 8 p.m. in Baton Rouge's Tiger stadium. This match brings together the de-

fending Southwest and Southeastern conference champions.

Many Frog fans feel this is the one Abe's boys have been waiting for a long time. It's not everyday that you get a chance to knock off the nation's top ranked grid-iron machine. Last time a Purple club met the land's best was back in 1953 when it scared the day-lights out of Michigan State before bowing, 19-26, to the Big Ten Spartans.

This, though, won't be the first meeting between TCU and LSU for the elevens have met four times previous in some of the closest games ever recorded. The Froggies lead in the series which dates back to 1931, with two wins, a loss and a tie. Their last battle was in 1943 with the Tigers taking a 14-0 win.

### 13-Game Streak

Winners of 13 straight games under coach Paul Dietzel the Tigers deserve their lofty rank. The 1958 National Champs and Sugar Bowl winners return 31 of 35 lettermen, including their two All-Americans, center Max Fulger and halfback Billy Cannon.

Last week they proved they're out for another national title by roaring from behind to smother the Rice Owls, 26-3, in their opener. Using three units almost equally, they simply overpowered the Owls with the tremendous depth.

### Three Units Used

The first unit, or the Whites, as they are known, features a potent offense led by Cannon, the 215-pound halfback who eats up a hundred yards in just 9.5 seconds. Of course his running mate, Johnny Robinson, is not so publicized but is a fine shifty runner and excellent pass receiver. Signal Caller Warren Rabb is a top passer who fired for eight touchdowns last fall with 45 completions from 90 airds.

The second unit, or the "go team," supplies plenty of offensive ability also, since they were the ones who did much of the damage against Rice.

The famous Chinese Bandits are the third unit, specializing in fierce defensive play. This slant-

## FROG FACTS

RUSHING			
Player	TC	Yds.	Avg.
Spikes	15	130	8.7
Lasater	8	39	4.9
Harris	7	34	4.9
Dawson	10	35	3.5
Moreland	6	22	3.7

PASSING			
	PA	PC	NYG
Dawson	9	4	46
George	10	4	40
Lasater	10	1	28

PASS RECEIVING			
	PC	NYG	Avg.
Ham	2	22	11
Rowland	2	18	9
Terrell	1	28	28

# Skiff Sports

Page 12

Friday, September 25, 1959



Billy Cannon

## Freshmen Gridders Prepare for Opener

By JAMES HARPER

**TCU-LSU Series a Close One**  
Tomorrow night's TCU-LSU game figures to be full of fireworks but plenty close. Especially so if it follows the trend of their brief series in the past. The two rivals have played three of the tightest games ever recorded. It all started back in 1931 when the Frogs edged the Bengals 3-0. See SPORTS on Page 10

Coach Fred Taylor greeted his freshman football candidates Monday afternoon and immediately began preparing them for their season opener with the Texas A&M Fish on October 8. A talented group of former high school All-State and district standouts will be the main sprng behind this fall's Wog football team. Among the new recruits is plen-

ty of beefy linemen and powerful backs plus several speedy sprint champs.

Four members of the first-year team played in the annual high school all-star game this summer. They are Hal Stanislav, Rockdale guard; Jerry Davis, White Oak quarterback; Donnie Smith, Taylor halfback and Lynn Morrison, Cleburne end. Morrison was named the game's outstanding player for his brilliant defensive work.

Several younger brothers of past and present Frog stars are on hand to make names for themselves. They include Jerry Terrell, the Fort Worth Carter product who led the city's scorers. See FROSH on Page 10

## Perfect Picks Win Contest

The Skiff Football Contest got off to a roaring start, with no entrant missing more than two games.

Only two of the many forecasters managed to pick all eight games correctly, with James G. Wood of 3125 Ryan Avenue, winning the free passes.

Wood guessed 42 as the total points of the TCU-Kansas game, giving him a two-point lead over Joe Gambill of 3828 Bunting, who guessed 44 points.

In the total points category, Kent Apple came the closest by predicting 20 points, while Louis Cummings guessed 23 points.

The Texas Tech-Texas A&M game gave the most trouble, eliminating more than half of the contestants. Surprisingly enough, See CONTEST on Page 11

## Skiff Football Contest

FOUR TICKETS TO WORTH THEATER GIVEN EACH WEEK

### CONTEST RULES

- Contest is open to TCU students ONLY.
- Only ONE entry will be accepted from each contestant and EVERY game must be picked.
- Contestants must pick total points on TCU game each week and, in case of a tie, contestant coming closest each week will be declared the winner.
- Entries must be received in box marked "Skiff Football Contest" at the candy counter in the Student Center by 6 p.m. Friday.
- No member of The Skiff staff is eligible for prizes.
- Winner will receive four passes to the Worth Theater.
- Entries will be judged by sports editors of The Skiff.
- Winner will be announced next week in The Skiff.

TCU . . . . . vs. LSU . . . . . Tex. Tech. . . vs. Ore. St. . . . .  
Baylor . . . vs. Colorado . . . Texas . . . vs. Maryland . . .  
SMU . . . . vs. Ga. Tech. . . . Tex. A&M . . vs. Mich. St. . . .  
Arkansas . . vs. Okla. St. . . . Auburn . . . . vs. Tenn. . . . .  
Total Points of TCU-LSU game . . . . .

NAME . . . . .  
ADDRESS . . . . . PHONE . . . . .

