

**ADVANTAGES  
of  
LAKE GRAPEVINE SITE  
for the  
PROPOSED AIR FORCE ACADEMY**



ADVANTAGES  
of  
LAKE GRAPEVINE SITE  
for the  
PROPOSED AIR FORCE ACADEMY

Summary Presented Jointly  
By the Chambers of Commerce of  
Fort Worth - Dallas - Denton

In May of 1950, the Chambers of Commerce and Cities of Fort Worth, Dallas and Denton agreed to submit a joint request that the proposed Air Force Academy be located on the north shores of Lake Grapevine, approximately in the center of the triangle formed by the three cities. They were joined in this request by representatives of Grapevine, Arlington, Lewisville and other cities in the area.

On November 17, 1950, we were informed that the Grapevine site was one of twenty-nine considered by the Air Force Academy Site Selection Board, and on November 28, 1950, the following members of the Board personally inspected the site: General Carl Spaatz, Lieutenant General Hubert R. Harmon, Brigadier General Harold L. Clark, Dr. Bruce Hopper and Colonel Arthur E. Boudreau.

On March 1, 1951, we were informed that the Grapevine site was one of seven slated to receive final consideration for the proposed Academy, and on March 17, 1951, representatives of the Chicago engineering firm of Holabird & Root & Burgee made a further survey of this area. On April 17, 1951, the members of the Site Selection Board, accompanied by L. B. Carnahan and J. Z. Burgee of the engineering firm, again visited the site.

Located in Denton County, Texas, the site we have recommended is well insulated from potential enemies and is strategically located with respect to all parts of the continental United States. It is 3,000 miles from Alaska, 2,850 miles from Greenland, 900 miles from the East Coast, 2,150 miles from open sea beyond the Caribbean Islands, 2,000 miles from Panama, 850 miles from the West Coast of Mexico and 1,200 miles from the West Coast of the United States.

The Grapevine site -- from 9,000 to 15,000 acres, or larger, if necessary-- is located on the north side of Lake Grapevine, and extends north and east to an arm of the Garza-Little Elm Lake. It is approximately twenty miles from both Dallas and Fort Worth, and is ten miles south of Denton.

We believe the site is ideal because it meets all of the initial requirements established by the Board:

1. Isolated from other developments.
2. Good transportation facilities (rail, air and highway).
3. Relatively close to a metropolitan area.

Briefly, the Grapevine site offers the following specific advantages:

1. Transportation -- The site can be served by three railroads, connecting with seven others at Fort Worth and Dallas, and two federal highways, connecting with six others at Dallas, Fort Worth and Denton. In the immediate vicinity are three commercial airports served by three transcontinental airlines, three feeder airlines and one air freight line. Power and natural gas will be made available at the site. Water can be withdrawn from Grapevine Lake or from sands at 400 to 1,000 feet. Telephone and telegraph connections will be direct with Denton, Dallas and Fort Worth.
2. Metropolitan Area -- Although this site is in a semi-isolated area, it is in the vicinity of a number of cities and towns which provide facilities of all types for use of the officers and students of the Academy. Dallas (432,805) is twenty miles to the southeast; Fort Worth (278,778) is twenty miles to the southwest; Denton (21,345) is ten miles to the north; Grapevine (1,826) is six miles to the south; Lewisville (1,509) is four miles to the east; and Arlington (7,691) is eighteen miles to the south.
3. Weather -- The climate is especially favorable for scholastic and aviation activities. According to the United States Weather Bureau, the lowest monthly average temperature in this area is 45 degrees; the highest, approximately 84 degrees. Rainfall averages 34 inches annually. The fact that the area enjoys approximately 67 per cent of possible sunshine and has an average of only 2.5 inches of snow and sleet and seven days of fog per year, insures satisfactory year-round flying conditions.

4. Special Advantages of Site -- The site is well drained and capable of producing all kinds of vegetation indigenous to the area. Grapevine Lake, recently completed, will eventually cover an area of 7,000 to 12,000 acres, providing for all types of water sports and acting as a cooling agent in the summer, since prevailing winds are from the south in this area. The cost of the site will be reasonable.

5. Military Supplies and Services -- In the vicinity of this site are several important military and other government establishments, including the following:

Headquarters, Flying Training Air Force, Waco, Texas  
 Southwestern Division, Corps of Engineers, Dallas, Texas  
 Fort Worth District, Corps of Engineers, Fort Worth, Texas  
 Headquarters, 8th Air Force, Fort Worth, Texas  
 Carswell AFB, Fort Worth, Texas  
 James Connally AFB, Waco, Texas  
 Sheppard AFB, Wichita Falls, Texas  
 Perrin AFB, Sherman-Denison, Texas  
 Wolters AFB, Mineral Wells, Texas  
 Gray AFB, Killeen, Texas  
 Fort Worth Quartermaster Depot, Fort Worth, Texas  
 Fort Worth QM Market Center, Fort Worth, Texas  
 Regional Office, General Services Administration, Dallas, Texas  
 Fort Hood, Killeen, Texas  
 Fort Sill, Lawton, Oklahoma  
 Hensley Field, Dallas, Texas  
 Naval Air Station, Dallas, Texas

The strategic location of the Grapevine site with respect to the headquarters of the Flying Training Air Force, the division and district headquarters of the Corps of Engineers, the Fort Worth Quartermaster Depot and Market Center, and the General Services Administration regional office should facilitate the construction and operation of the Academy at the Grapevine site.

6. Civilian Supplies and Services -- Located at Fort Worth, Dallas and Denton are manufacturers able and willing to supply many of the fundamental requirements of the Academy. There are forty-five first class hotels and scores of attractive dining places in these cities.

7. Aircraft Manufacturing Center -- Manufacturing establishments in the area may prove extremely valuable as "off-campus" training centers or for practical, specialized laboratory work. Consolidated-Vultee Aircraft Corporation and the helicopter division of Bell Aircraft Corporation are at Fort Worth, while Chance-Vought Aircraft Corporation and Temco Aircraft Corporation are at Dallas.
8. Emergency Landing Fields -- Within 25 miles of the site are three air fields available for auxiliary use (Denton Airport, Meacham Field at Fort Worth and Marine Air Base on Eagle Mountain Lake) and within 75 miles there are at least ten other airports available for emergency landings. In addition, there are a number of unpaved air fields throughout the area which can be used safely in emergencies.
9. Colleges and Universities -- Located at Denton, Dallas, Fort Worth and Arlington are six colleges and universities with enrollments of 2,000 to 6,000 each. Not to be overlooked is the fact that of the 8,000 students at North Texas State College and Texas State College for Women at Denton, nearly 5,000 are women. The Union Recreation Building at Texas State College for Women has a dance floor which will accommodate 1,000 couples.
10. Recreation -- Perhaps nowhere in the nation are finer recreation facilities than those existing within an hour's drive of the proposed site. There are nine lakes in the area providing all types of water sports and parks and playgrounds exceed 17,000 acres in extent. Recreational areas, to be constructed under the supervision of the Corps of Engineers, have been set aside on the shores of Grapevine and Garza-Little Elm Lakes. There are seven public golf courses and facilities for all types of outdoor sports. Within an hour's drive there are nine guest and dude ranches. For entertainment there are football and basketball at several of the universities and colleges and both Dallas and Fort Worth have professional baseball teams. The State Fair of Texas at Dallas and the Southwestern Exposition and Fat Stock Show at Fort Worth are outstanding events. A season of summer opera of twelve weeks is an institution in Dallas. In the area are

museums, libraries, lecture courses, Metropolitan Grand Opera, Fort Worth Civic Opera, Dallas Symphony Orchestra, and many other activities in the cultural field. Top live net work television entertainment is offered by the three stations serving this area. NBC, ABC, CBS, and DuMont programs are available through cable and relay tower hook-ups linking Dallas and Fort Worth with other major cities in the Nation.

11. Physical and Spiritual Health -- In the immediate area are thirty-eight hospitals with 9,585 beds. Of these, seven are operated by the government. City and County health departments are maintained, and death rates attributable to all diseases are below the national average. In the six communities in the immediate vicinity of the site are over 600 churches of all denominations.
12. Housing -- Over 75,000 residential units have been built in Dallas, Fort Worth and Denton since the end of World War II. In these cities and in Grapevine and Arlington are residences which can be made available to personnel living off the Academy reservation, either on rental or purchase basis.

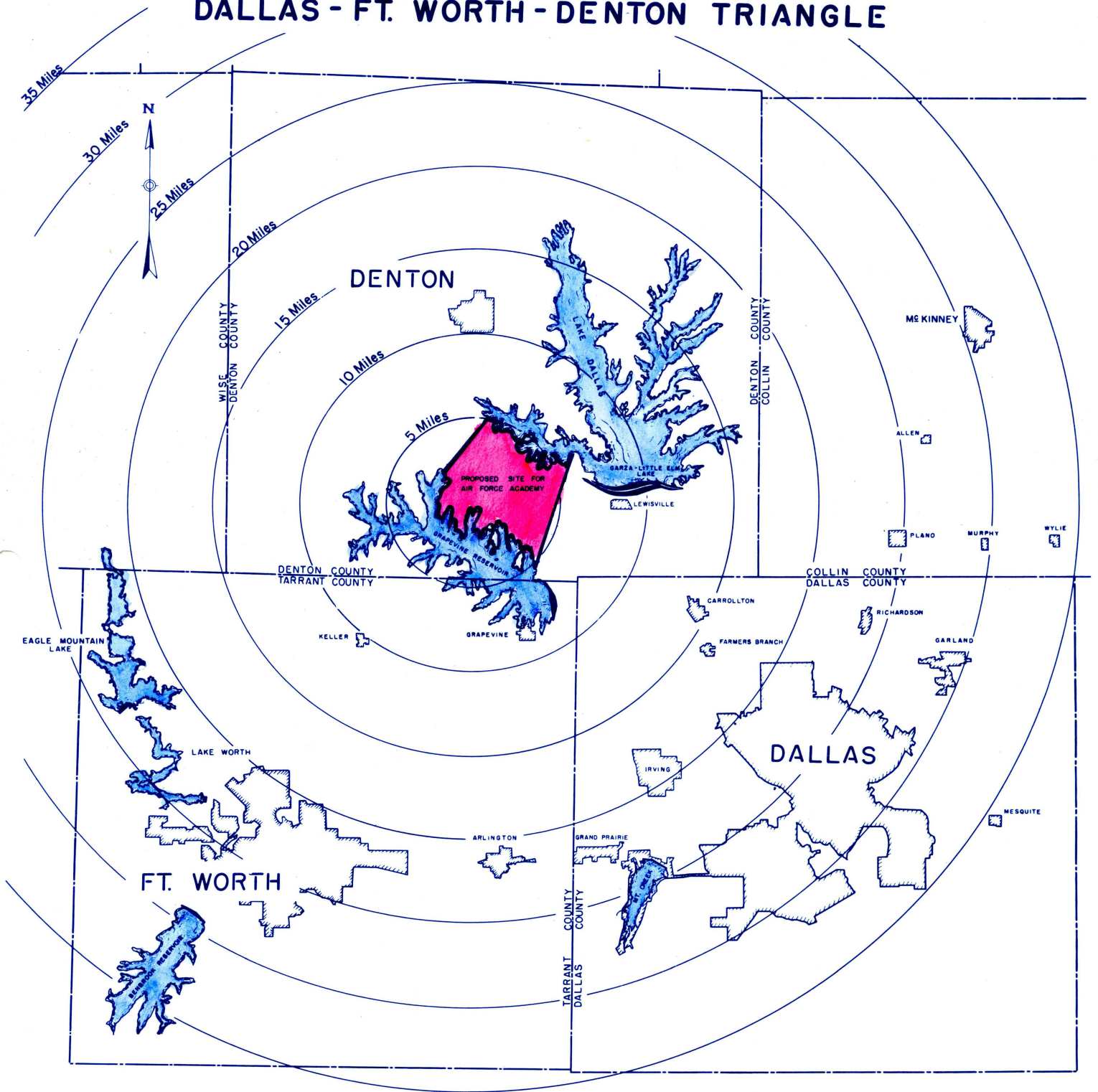
Finally, and very important, the Air Force Academy, both officers and students, will be welcomed in this area. All of us will extend to the administrators and the students of the Academy our fullest cooperation.



MAP SHOWING  
 LOCATION OF PROPOSED  
**AIR FORCE ACADEMY SITE**  
 WITH RESPECT TO  
 NORTH AMERICAN CONTINENT



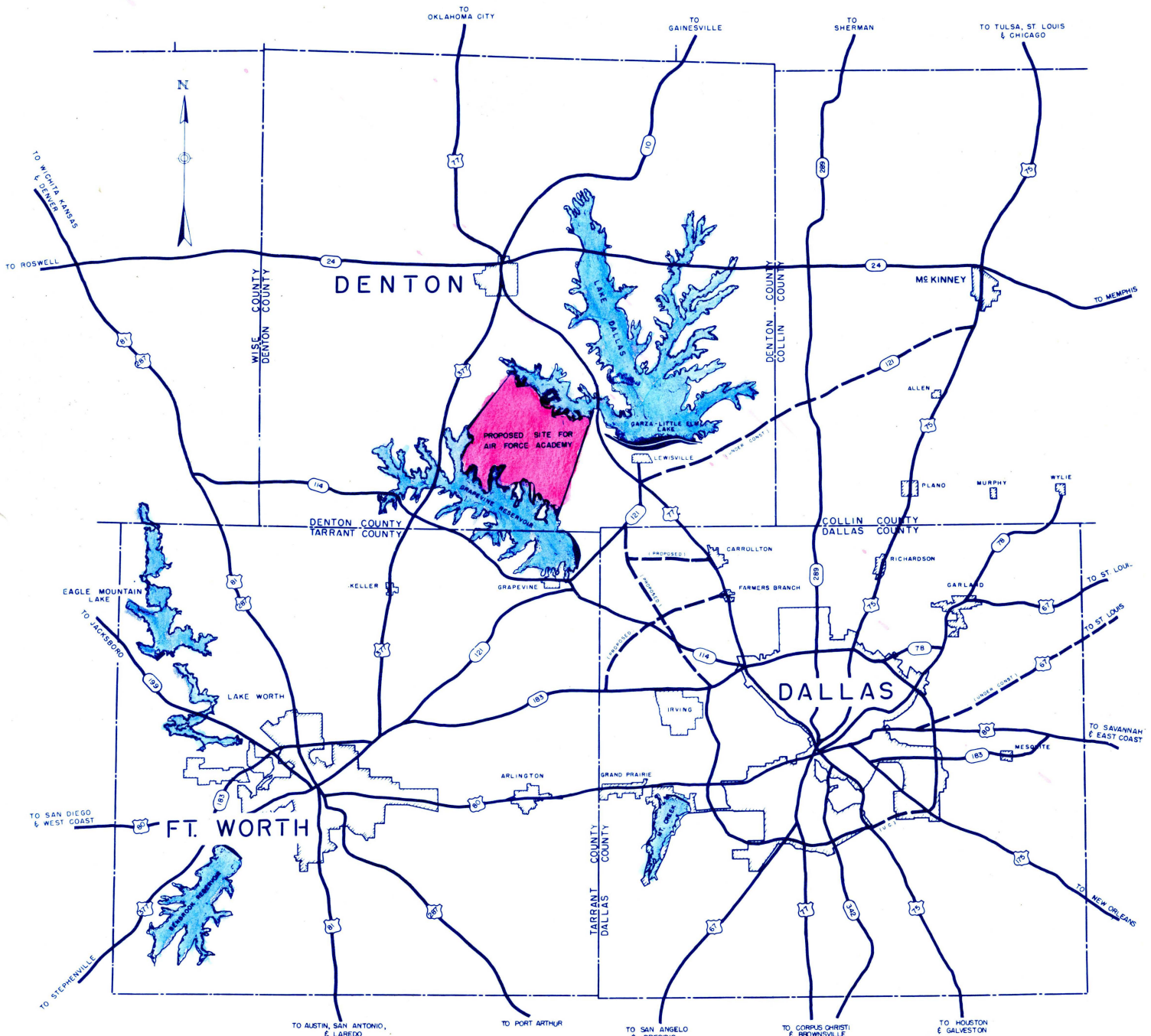
# LOCATION OF SITE IN THE DALLAS - FT. WORTH - DENTON TRIANGLE



FT. WORTH TO DENTON	38 MILES
DENTON TO DALLAS	36 MILES
DALLAS TO FT. WORTH	32 MILES

# HIGHWAY FACILITIES

## DENTON - DALLAS - FT. WORTH TRIANGLE



U.S. 377 TO FT. WORTH CONNECTS WITH 7 U.S. & TEXAS HIGHWAYS, AND WITH TEXAS 114 MIDWAY BETWEEN FT. WORTH AND DENTON.

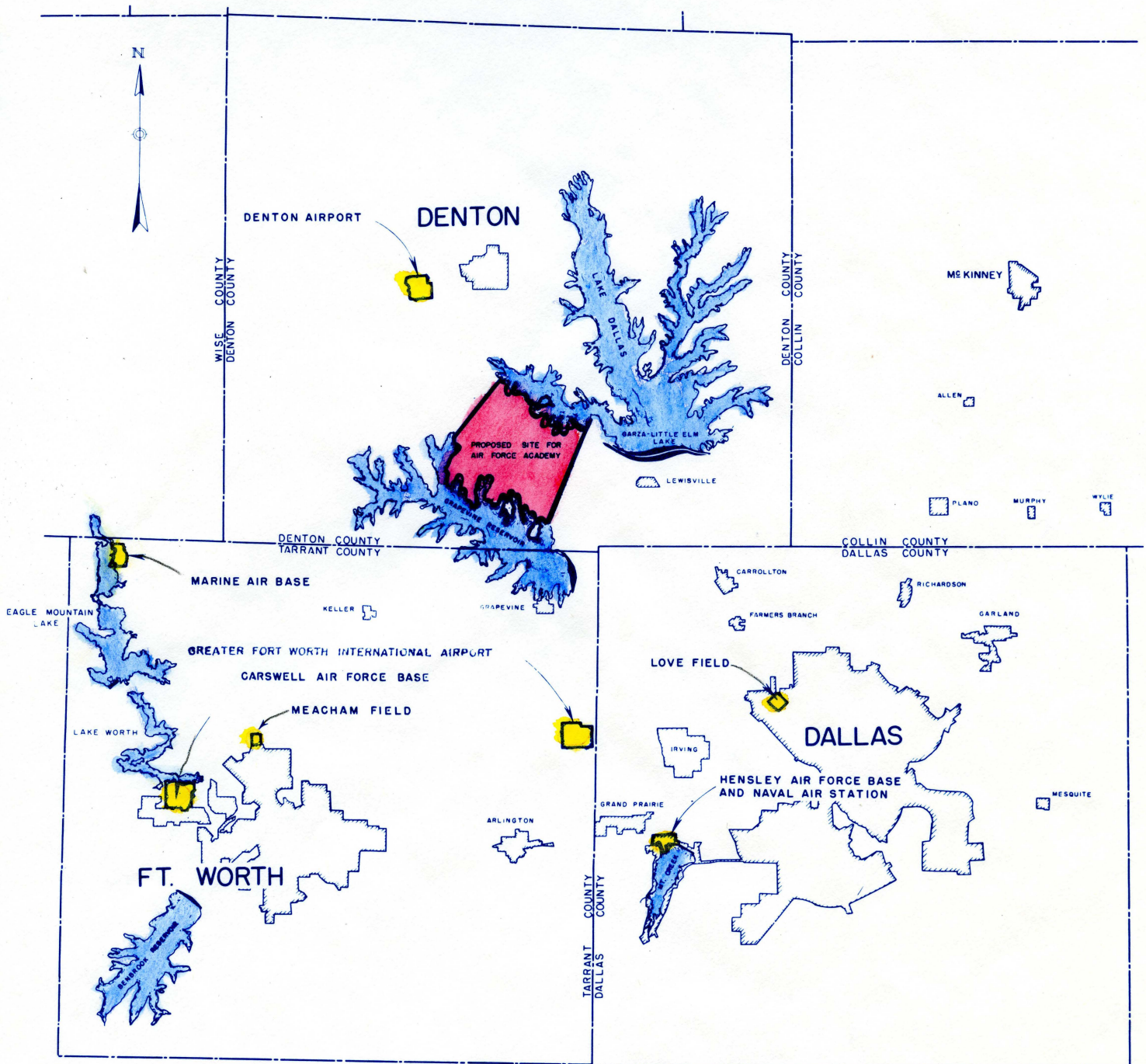
U.S. 77 TO DALLAS CONNECTS WITH 12 U.S. AND TEXAS HIGHWAYS, AND WITH TEXAS 121 MIDWAY BETWEEN DALLAS AND DENTON.

U.S. 377 AND 77 TO DENTON CONNECT WITH TEXAS 24 AND 10.



# AIR TRANSPORT FACILITIES

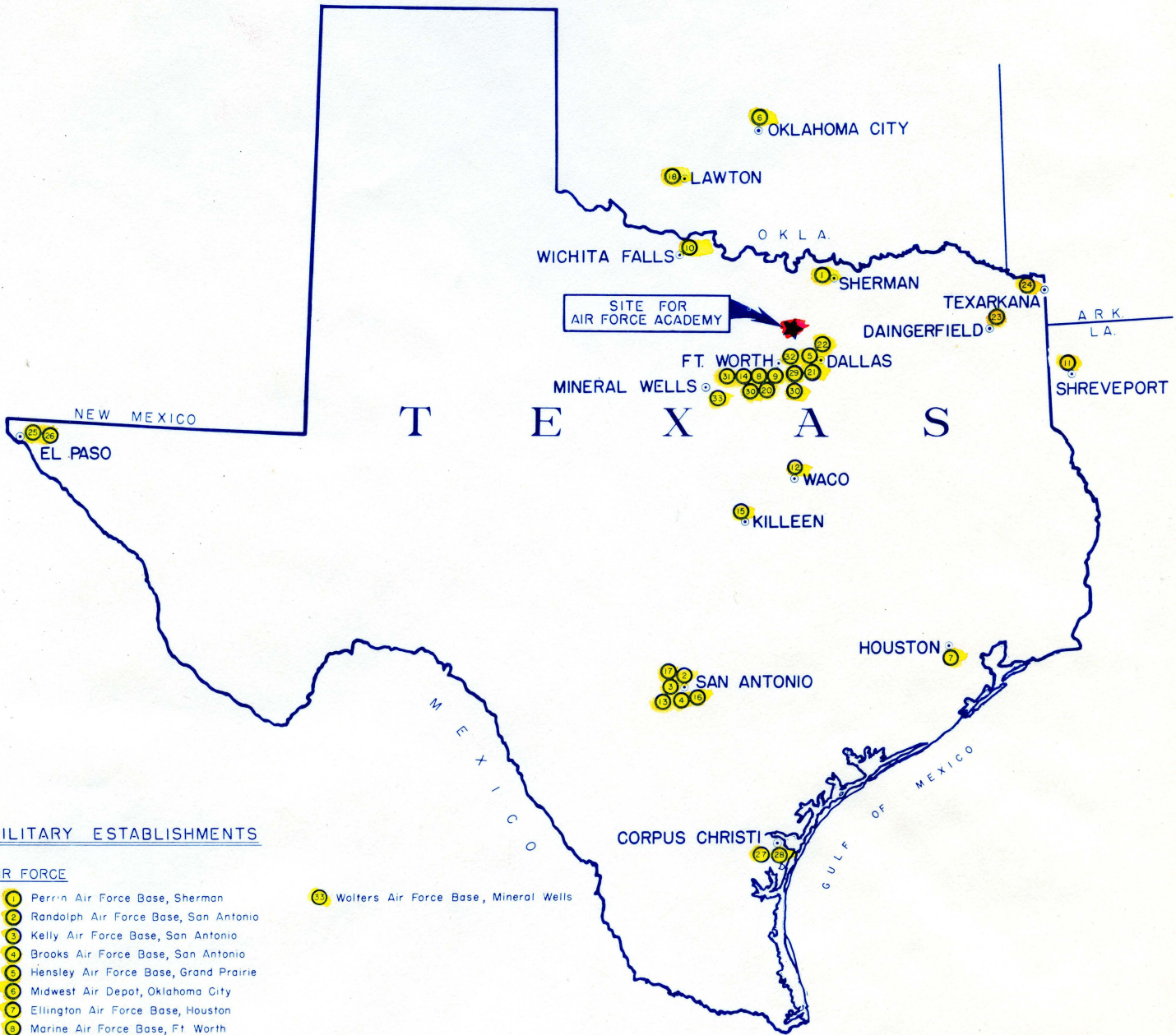
## DALLAS - FT. WORTH - DENTON TRIANGLE



- AIR LINES SERVING LOVE FIELD AND MEACHAM FIELD\*
- AMERICAN AIRLINES
  - BRANIFF AIRWAYS
  - CENTRAL AIR LINES
  - DELTA AIR LINES
  - PIONEER AIRLINES
  - TRANS-TEXAS AIRWAYS
  - SLICK AIRWAYS (FREIGHT)

\*ALSO FORT WORTH INTERNATIONAL AIRPORT - COMPLETION EARLY 1952

# MILITARY ESTABLISHMENTS AND INDUSTRIAL FACILITIES



## MILITARY ESTABLISHMENTS

### AIR FORCE

- 1 Perrin Air Force Base, Sherman
- 2 Randolph Air Force Base, San Antonio
- 3 Kelly Air Force Base, San Antonio
- 4 Brooks Air Force Base, San Antonio
- 5 Hensley Air Force Base, Grand Prairie
- 6 Midwest Air Depot, Oklahoma City
- 7 Ellington Air Force Base, Houston
- 8 Marine Air Force Base, Ft. Worth
- 9 Carswell Air Force Base, Ft. Worth
- 10 Sheppard Air Force Base, Wichita Falls
- 11 Barksdale Air Force Base, Shreveport
- 12 Connally Air Force Base, Waco
- 13 Lackland Air Force Base, San Antonio
- 14 Biggs Air Force Base, El Paso
- 15 Cabaniss Air Force Base, Corpus Christi

### ARMY

- 16 Fort Worth Q M Depot, Ft. Worth
- 18 Fort Hood, Killeen
- 19 4th Army Headquarters, San Antonio
- 20 Fort Sam Houston, San Antonio
- 21 Fort Sill, Lawton, Okla
- 22 District Engineer Office, Ft. Worth
- 23 Southwest Division Engineer Office, Dallas
- 24 Red River Ordnance Plant, Texarkana
- 26 Fort Bliss, El Paso

### NAVY

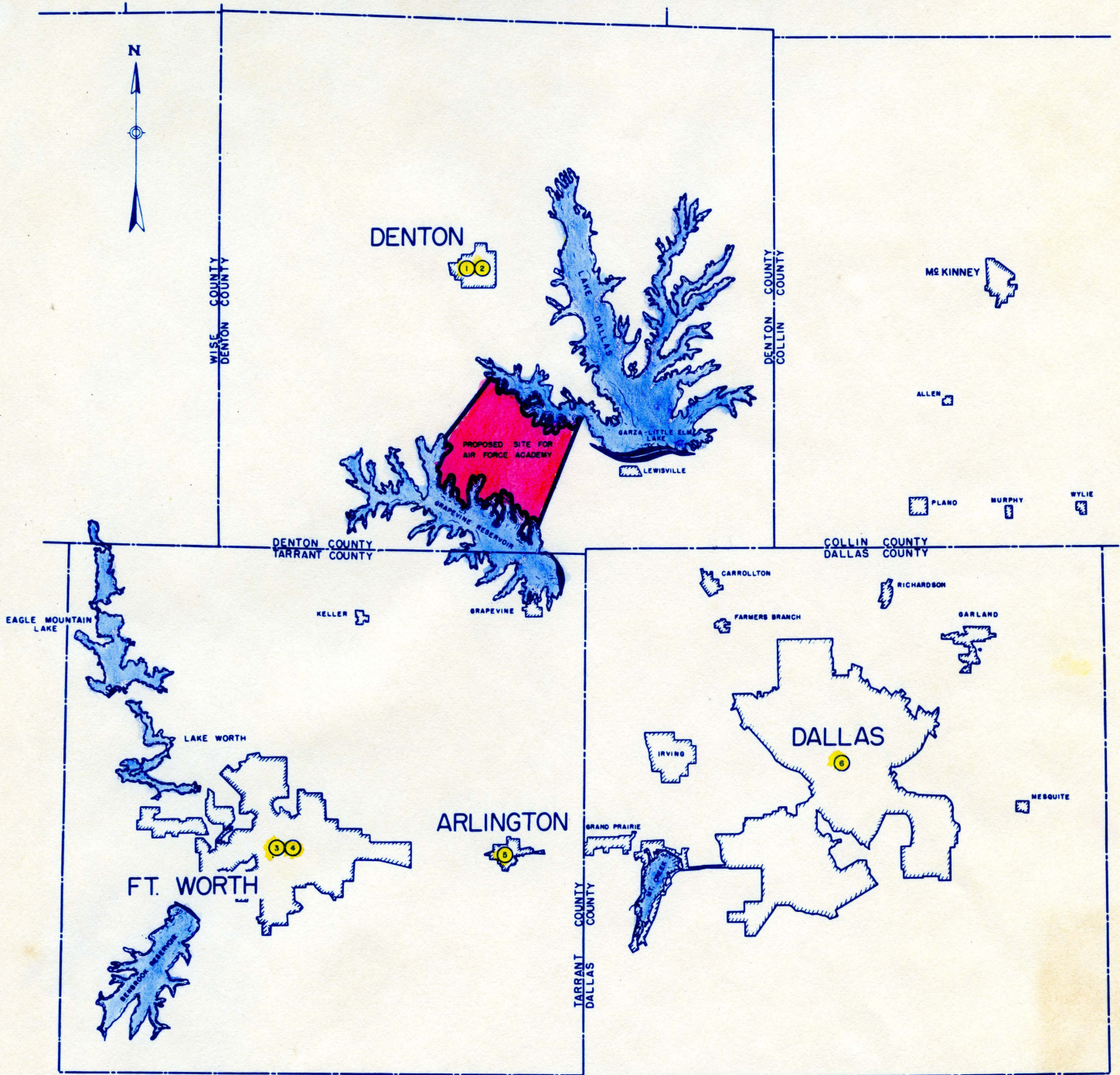
- 28 Naval Air Station, Grand Prairie
- 29 Aeronautical Research Laboratory, Daingerfield
- 27 Naval Air Force Base, Corpus Christi

### INDUSTRIAL FACILITIES

- 30 Chance Vought Aircraft, Division of United Aircraft Corp., Dallas
- 31 Temco, Dallas
- 32 Consolidated Vultee Aircraft Corp., Ft. Worth
- 33 Bell Aircraft Corporation, Hurst

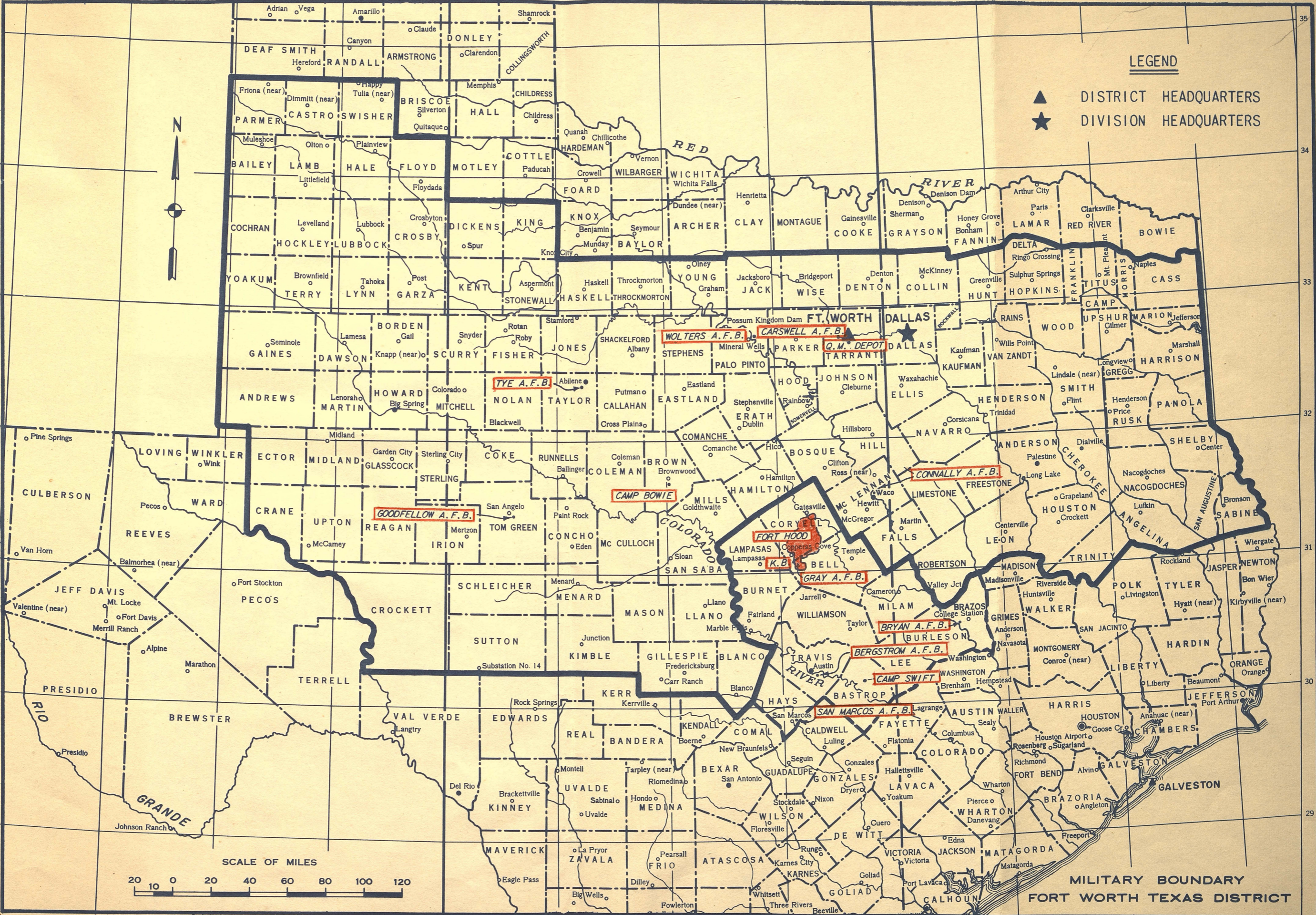
# EDUCATIONAL FACILITIES

## FT. WORTH-DENTON-DALLAS TRIANGLE



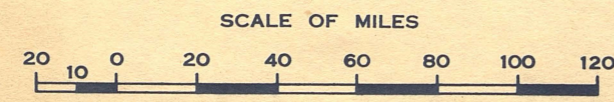
- ① TEXAS STATE COLLEGE FOR WOMEN
- ② NORTH TEXAS STATE TEACHERS COLLEGE
- ③ TEXAS CHRISTIAN UNIVERSITY
- ④ TEXAS WESLEYAN COLLEGE
- ⑤ ARLINGTON STATE COLLEGE
- ⑥ SOUTHERN METHODIST UNIVERSITY

	<u>ENROLLMENT</u>	<u>FACULTY</u>
①	2,806	169
②	5,133	287
③	4,882	240
④	942	56
⑤	1,644	108
⑥	6,039	255



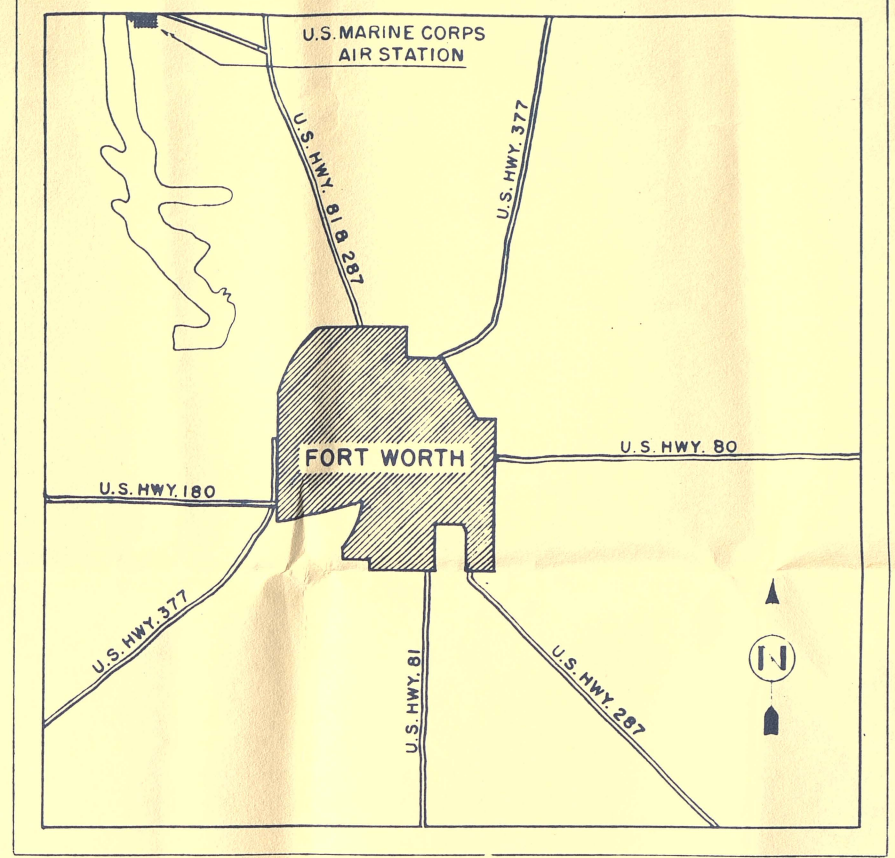
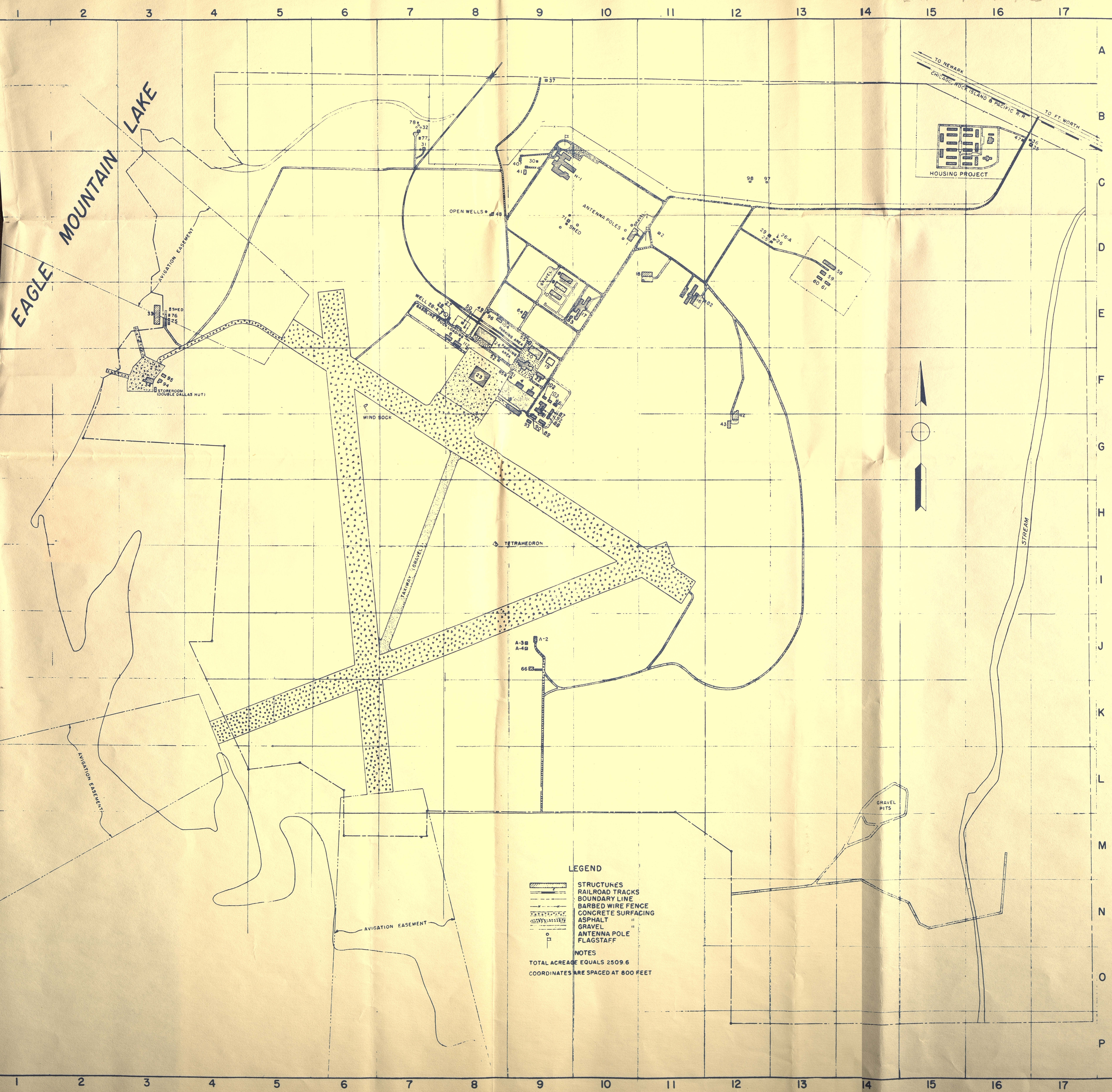
LEGEND

- ▲ DISTRICT HEADQUARTERS
- ★ DIVISION HEADQUARTERS



MILITARY BOUNDARY  
FORT WORTH TEXAS DISTRICT

Attach pre 3/26/53



LOCATION PLAN  
SCALE IN MILES

INDEX					
NO.	NAME	COORD.	NO.	NAME	COORD.
A-2	AMMUNITION STORAGE	J-9	43	PACKING & ASSEMBLY SECTION	G-12
A-3	"	J-9	47	PUMP HOUSE	B-16
A-4	"	J-9	48	HOUSE (FORMERLY N. C. O. CLUB)	C-8
M-1	DISPENSARY	C-9	49	PUMP HOUSE - GASOLINE	E-8
1	ADMINISTRATION BLDG.	D-10	50	"	E-8
2	O. D. SHACK	D-11	51	SENTRY HOUSE	F-9
3	SQUADRON BLDG.	F-9	52	WATCH TOWER	F-8
4	"	F-9	55	AUXILIARY PAINT SHOP	E-9
5	"	E-8	58	PUBLIC WORKS WAREHOUSE	D-13
6	"	E-8	59	"	D-13
7	OPERATIONS & CONTROL TOWER	F-9	60	"	D-13
8	BARRACKS	D-9	61	"	E-13
9	"	E-9	64	"	E-9
10	"	E-9	66	FARM HOUSE	J-9
16	OFFICERS' MESS	E-11	71	RADIO TRANSMITTER BLDG.	D-9
17	ENLISTED MEN'S MESS	E-10			
18	RECREATION BLDG.	D-11	75	BOAT SHOP	E-3
19	PARACHUTE LOFT	F-9	76	BOAT STORAGE HUT	E-3
20	PUBLIC WORKS SHOP & OFFICE	F-9	77	SEWAGE DISPOSAL PLANT OFFICE	B-7
21	GARAGE & FIRE HOUSE	F-9	78	SEWAGE DISPOSAL CHLORINATION HOUSE	B-7
22	PAINT & OIL STATION	F-9	82	GARBAGE SHED	E-12
23	HANGAR	F-8	83	"	E-9
24	STORE HOUSE & COMMISSARY	E-8	85	HANGAR STORAGE SHACK	F-8
25	PUMP HOUSE	D-13	86	ORDNANCE & GUNNERY	F-9
26	WATER STORAGE TANK - 200,000 GALLONS	D-13	87	VISUAL TRAINING	F-9
26-A	WELL	D-13	88	2 3/3 DIMENSIONAL NIGHT VISION TRAINING	G-9
27	PUMP HOUSE	E-8	89	MOBILE MAINTENANCE TRAINER	G-9
28	WATER STORAGE TANK - 200,000 GALLONS	E-8	90	"	G-9
28-A	WELL	E-7	91	LINK TRAINER	F-9
29	ELEVATED WATER TANK - 50,000 GALLONS	D-12	92	HEAD	F-9
30	PUMP HOUSE	C-9	93	TRANSFORMER VAULT	G-9
31	INCINERATOR	B-7	94	STORE ROOM	F-3
32	SEWAGE DISPOSAL PLANT	B-7	94	SEAPLANE OFFICE	F-3
33	BOAT HOUSE	E-3	95	SEAPLANE READY ROOM	F-3
34	NOSE HANGAR	F-3	96	GASOLINE STATION	E-8
35	MAIN GATE - HOUSE	B-16	97	SKEET RANGE - HOUSE - LOW	C-12
36	SENTRY HOUSE - NORTH GATE	B-16	98	" " " HIGH	C-12
37	SENTRY HOUSE	A-9	102	SYNTHETIC TRAINING	F-9
40	M. O. O.	C-9	103	"	F-9
41	"	C-9	104	Q. M. OFFICE	E-8
42	PACKING & ASSEMBLY SECTION SHED	G-12	112	RADIO RADAR STORAGE SHED	F-8
		D-9			D-11

MAP OF THE FORMER  
U.S. MARINE CORPS AIR STATION  
EAGLE MOUNTAIN LAKE, TEXAS  
SHOWING CONDITIONS ON  
JUNE 30, 1951

SCALE OF FEET  
0 400 800 1200 1600  
R. E. Bassler  
CAPTAIN (C.E.C.) U.S. NAVY  
DISTRICT PUBLIC WORKS OFFICER

