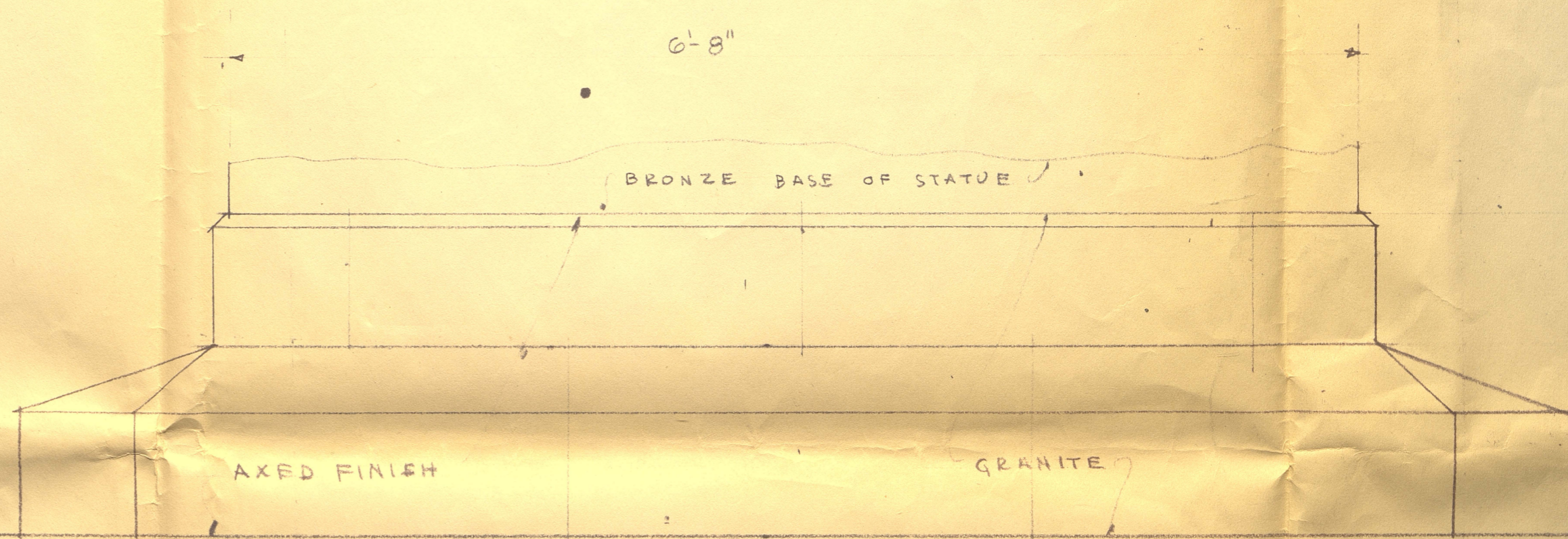
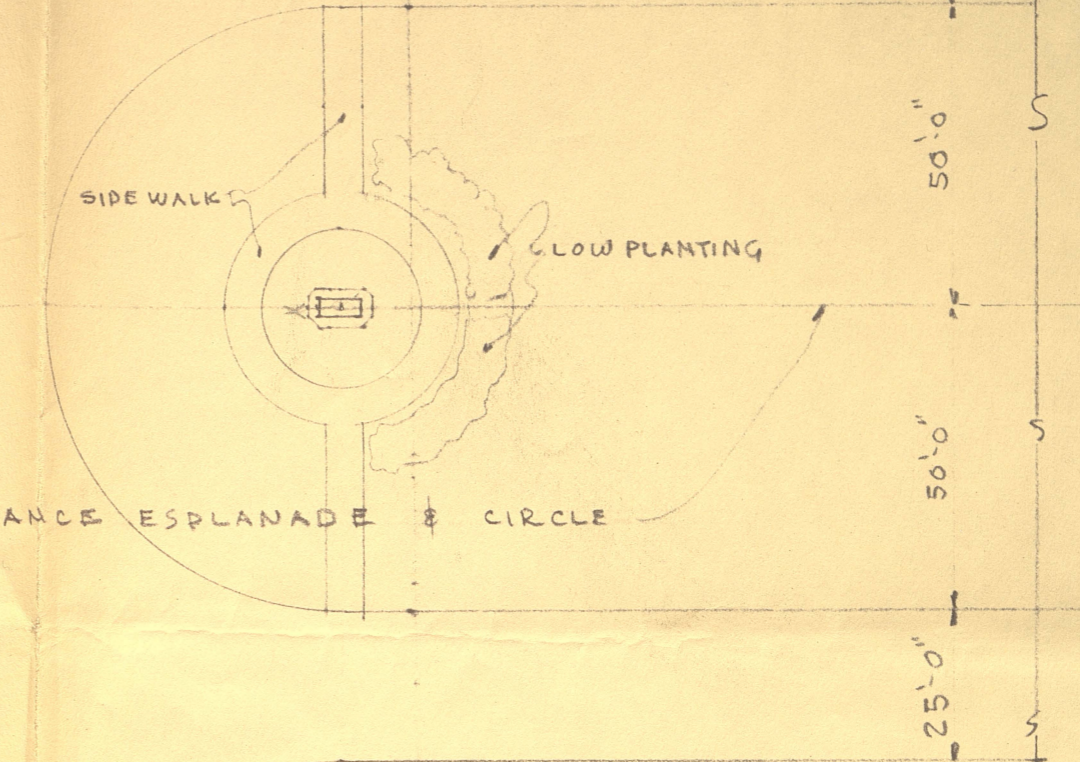
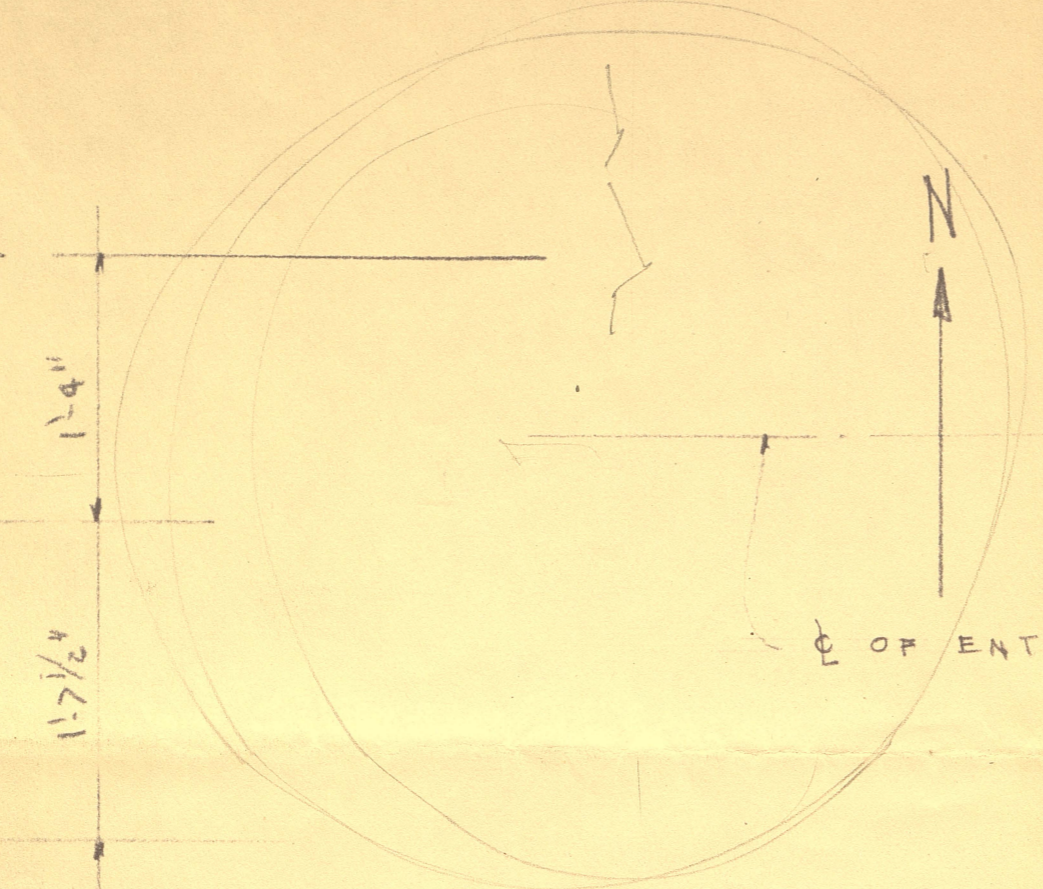
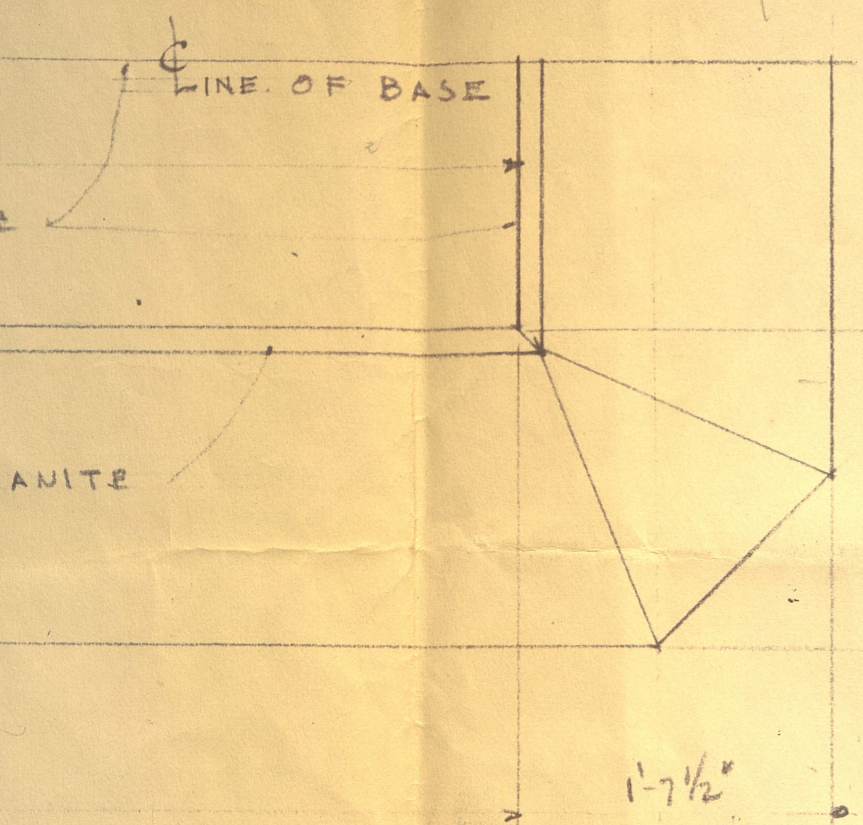


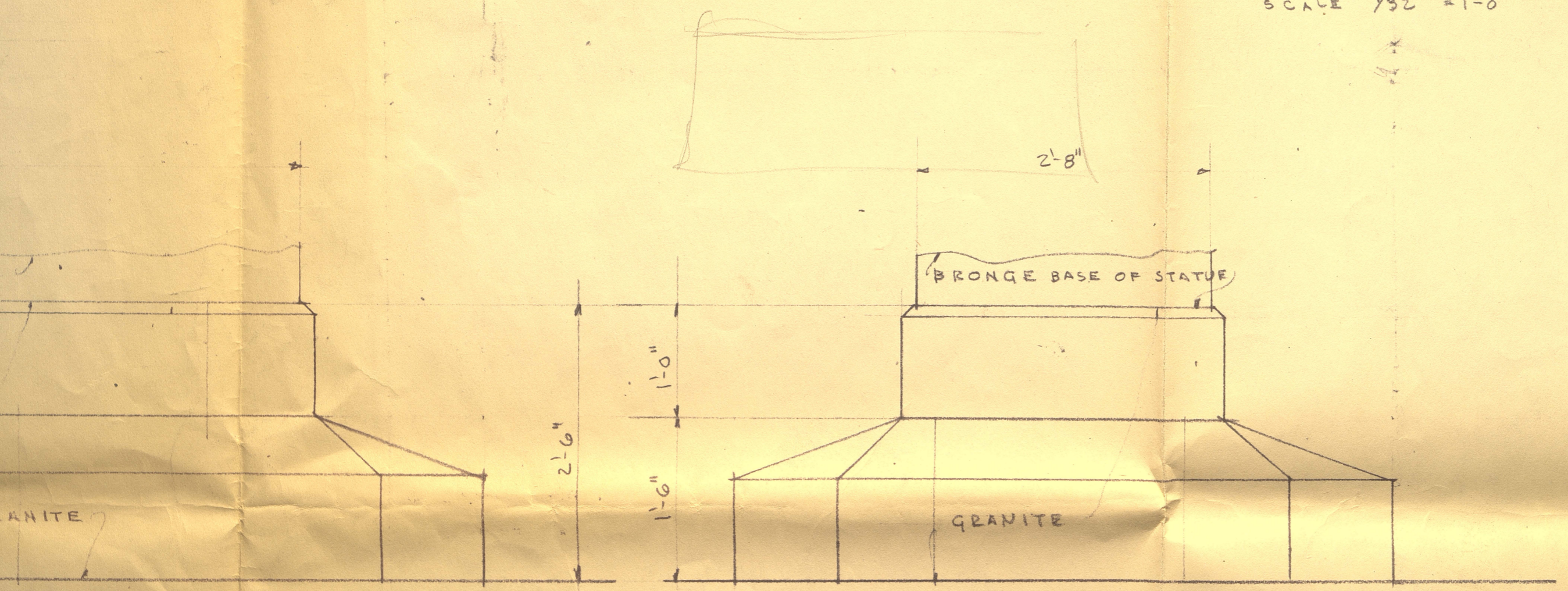
• HALF PLAN •
SCALE 1" = 1'-0"



• SIDE ELEVATION •
SCALE 1" = 1'-0"



• LOCATION PLAN •
SCALE 1/32" = 1'-0"



• END ELEVATION •
SCALE 1" = 1'-0"

BASE FOR EQUESTRIAN STATUE
OF WILL ROGERS
AT
TEXAS TECHNOLOGICAL COLLEGE
LUBBOCK TEXAS,

WYATT C. HEDRICK ARCHITECT & ENGINEER
FORT WORTH TEXAS

7/20/48