

The Skiff

TEXAS CHRISTIAN UNIVERSITY ★ ★ ★ FORT WORTH, TEXAS

VOL. 63, No. 6

TUESDAY, OCTOBER 6, 1964

8 PAGES

Series Curtain Poised

Chorale To Kickoff

Fort Worth and University music lovers will be afforded an opportunity to pursue a favorite pastime when the Select Series program is christened with the appearance of the Roger Wagner Chorale Oct. 9.

The orchestra and chorus will appear in Daniel-Meyer Coliseum at 8 p.m. presenting music which Wagner has conducted with remarkable success at the Hollywood Bowl and on television.

For First Time

Tickets are priced \$1.50 at the door single admission for students, parents, and faculty, and \$2 for the general public.

The 24-voice group is accompanied this year for the first time by its own orchestra. Established 15 years ago in Southern California, the group has been acclaimed throughout the United States and Canada, in Europe, Asia, and Latin America. Eight sell-out tours have been made in Canada and North America.

Second to None

The group has been invited to perform in London during Queen Elizabeth's Coronation Season and was selected by the President's Special International Program for Cultural Presentations to tour 10 Latin American countries.

The group has been acclaimed by Leopold Stokowski as "second to none in the world," and by Eugene Ormandy as "the finest choir I have ever conducted."

In addition to television appearances, the group has recorded music for Capitol from folk songs, sea chanties, and Christmas carols to cantatas and madrigals of Bach, Monteverdi, Palestrina and Vaughan Williams.

The French-born conductor took his Doctorate of Music in America. Presently, he is director of choral music at the University of California and head of the music department at Marymount College in Palos Verdes.



ROGER WAGNER'S CHORALE TO OPEN SELECT SERIES
Maestro to use own orchestral accompaniment.

KTCU Assumes Role As FM Broadcaster

KTCU-FM broadcasting began yesterday, as the switches were ceremoniously thrown to put the new station on the air.

The new station is broadcasting on 89.1 megacycles, from 5 to 10 p.m. Monday through Friday. KTCU-FM has a 15-mile radius or approximately the greater Fort Worth area. At present the station only has a construction permit, but the FCC will decide whether to grant a license after a final inspection is made.

The program format is relaxing music interspersed with news, weather, campus news, features, and short educational discussions.

KTCU is part of the division of Radio-Television-Film directed by Dr. R. C. Norris, and is a non-commercial station.

The staff, chosen at a meeting, Monday, Sept. 28, include Bill Miller, Fort Worth senior, station manager; Jim Dye, senior from Greensboro, North Carolina, program director; Paula McClung, Fort Worth junior, promotion and publicity; John Fox, Fort Worth senior, news director; and Mike Wall, Fort Worth junior, sports director.

The ten announcers appointed were John Fox, Merlin Littlefield, Terry Guerrant, Clark McAlister, James Curtis, Carol Kynard, Bill Hesser, Paula McClung, Craig Libby, and Lee Fouts.

Newscasters are Ed Smith, Allen Thompson, Jan Ford, Bill Hesser, Terry Guerrant, Neal Hall, Ronnie Spain, John Fox, and Bill Gabbard.

To Tune of \$85

Bed Fire in Foster

Fire damage amounted to about \$85 when an electric water-warmer touched off a fire in room 104 of Foster Dormitory last Thursday at noon, burning a bed.

In the room, shared by Genna Hamilton, Quannah junior, and Carolyn Gopfert, Chuquicamata, Chile, junior, the bed was pushed against the wall outlet into which the appliance was plugged.

Miss Hamilton said the warmer probably was turned on accidentally while the girls were in the room.

Vern Gillette, Fort Worth senior, who put out the fire, was sitting on the east steps of the dormitory when he and Mary Kay Flavin, Houston senior, noticed the smoke. Miss Flavin notified the dorm hostess on duty, and she opened the door of the locked room. Gillette quickly smothered the flames with an extinguisher.

B. J. McMillan, of the Maintenance

Department, arrived on the scene to help carry the smoldering bed outside.

The extent of the damage seems to be one badly damaged mattress

and box springs, one bedspread, sheets and pillow cases, and one new carpet. The Maintenance Department said the badly-charred wall will have to be repainted.



Featured speaker at the annual Fall Convocation last Thursday was Dr. Hans Rosenhaupt, national director of the Woodrow Wilson Fellowship Foundation. Dr. Rosenhaupt spoke in favor of increased support of private universities during his address entitled

"Can Education Be Too Much of a Good Thing?" He believes the "educational explosion" may be cited by future historians as the most significant feature of our time.

Arts Again Tops

AddRan College of Arts and Sciences again led in total enrollment with 2,008 students, as fall figures firmed up.

The Evening College fell shortly behind at 1,807.

The Graduate School had a 12.3 per cent increase in enrollment to a record of 855.

Other school enrollments also reported by Calvin Cumbie, registrar, were these: School of Business, 812; School of Education,

610; School of Fine Arts, 393; Harris School of Nursing, 225; Brite Divinity School, 145. Brite dropped 17.1 per cent this year.

Total figures for 1964 came to 6,855, which is a decrease of 108 students or 1.5 per cent from last fall.

Freshmen led the undergraduate day school enrollment with 1,167 new students. Sophomores had 956; juniors, 863; and seniors, 967.

The women again outnumbered

the men in the undergraduate day schools with 51.7 per cent, to 48.3 per cent. The enrollment in Brite Divinity School, Graduate School, and Evening College is predominately male, causing the total University distribution to be 60.9 per cent men and 39.1 per cent women.

Continuing a pattern established in 1947, Baptists are represented by the largest number, 1,468, followed by Methodists with 1,381. Disciples of Christ number 1,084.

Registration Planned By Republicans

Plans for a campus-wide voter registration were laid out at the first meeting of the Young Republicans Tuesday night in room 203 of the Student Center.

Charles Hartman, Snyder junior, president of the club, said the purpose of the canvass would be to register all students who have reached age 21. Another purpose of the survey is to give assistance to those who need to vote by absentee ballot.

Fred Dielman, Republican candidate for U.S. Congressman from Tarrant County, spoke. Dielman stated the Republicans could win control of Congress this year, although there was not a chance of a Republican majority in the Senate.

The next meeting of the Young Republicans is scheduled for Oct. 8.

Schedule

KTCU-FM—89.1
Program Log

Broadcasting Monday - Friday
5-10 p.m.

4:59—Sign On
5:00—Music
5:08—Women's Features
5:15—News and Weather
5:35—Campus Roundup
5:50—Business Final
6:00—News Headlines and
Weather
6:02—Music
6:10—Evening Events
6:25—Sports Review
6:35—Weather Digest
6:45—Election Roundup (until
election)
6:55—News
7:00—Classical Music
9:00—News Headlines and
Weather
9:02—Music
9:45—News Roundup
9:55—Meditation
9:58—Sign Off

Published by The Skiff as a
kickoff service.

Growing Pains

Space Problem for Home Ecs

By MARILYN WHITVER

The National Aeronautics and Space Administration is not alone in its struggle with space problems.

Our own Home Economics Department is confronted with a space problem that won't quit—at least, it won't quit until new housing, more equipment, and a vastly increased staff are made available.

In this case, however, space is at a premium, rather than being infinite.

The reason is the upsurge of enrollment in the department this fall—more than double that of previous semesters.

Insofar as Dr. Edna Brandau, department chairman, is concerned, this is all-plus.

Good Troubles

"Of course, we feel these are good troubles," she said, "but there was no way to anticipate this great increase, and the problems involved have been a great challenge to all of us in the department."

Two new staff members have been added as a result of the increased demands on the faculty. Mrs. Jane Greenwell is teaching two sections of Family Meal Management. She is a newcomer to

Fort Worth, having been administrative dietician in charge of employer cafeterias at Washington University Medical Center in St. Louis. She has also been dietician for the Good Housekeeping Institute in New York City.

Mrs. Warren Agee, wife of the Dean of the Evening College, is the new part-time secretary for the department. She was enrolled in the department's Home Furnishings course last year and helped co-ordinate the work on the Traditionary House, a project of students in the Construction Management Program.

To Absorb Load

The department now includes four full-time teachers and Dr. Brandau, department chairman, plus two part-time instructors. The staff is making an effort to absorb the extra load, although they are still in need of more help in clothing courses.

Air conditioning for the entire building was installed last week in Sterling House, the homey classroom building for home economics classes. This was a welcome addition for the students and faculty, particularly since crowded conditions now prevail.

Sterling House includes two classrooms upstairs and a foods labora-

tory and kitchen downstairs, which are used for meal management courses. Two classrooms in the Undergraduate Religion Building are also used for some lectures.

Many classes have been divided into two sections when only one section has been sufficient in previous years. An effort is being made to utilize the available equipment to the utmost as no new equipment has been purchased as yet. The department is hoping for a new building in the future, so they must consider this in any purchase they make at the present time.

About 100 majors are presently enrolled in the department. The number of students is about equally proportioned in each of the four undergraduate classes.



"Luxury for Less"

- 24 Hour Food Service
- TV in All Rooms
- Swimming Pool
- Free Teletype Reservation Service in all Ramada Inns

G. Harrell Keathley, Mgr.

4201 SOUTH FREEWAY at SEMINARY DRIVE
Phone WALnut 3-8281

Immediate Openings

Need 5 students for part-time work, 15-20 hours per week.

\$40, Car

Apply 801 N. Riverside Dr.
Mon.—Tues.—Wed.
7 P.M. SHARP
Ask for MR. STEELEY

BSU Slated To Attend Convention

Members of the Baptist Student Union and their friends will leave for the state BSU convention in Waco, Oct. 9 at 3 p.m., according to President Danny Lattimore.

The Seventh and James Baptist Church will host the convention, which will continue through Oct. 11. Between 2,000 and 2,500 people are expected to attend.

The theme of the convention will be "When Students Worship God." Speakers include Bill Lawson, Negro pastor from Houston, who has done extensive work in the field of race relations; Howard E. Butt, Baptist layman who owns H.E.B. grocery chain; Nathan Porter, member of the Home Missions Board of the Southern Baptist Convention; and Dr. T.A. Patterson, Executive Secretary of the Baptist General Convention of Texas.

The major topic to be discussed will be ways to better race relations, especially on college campuses in Texas.

Included in the discussions will be the Summer Missions Program of the BSU which sent 43 missionaries to various parts of the world last summer.

Twenty rooms have been reserved at the Town House Motel for those going, at a charge of \$3 per night. Homes will be provided for those who do not wish to stay in the motel.

All persons who are interested in attending the convention should contact Danny Lattimore or Richard Butler in Clark Hall or Roy Ray at WA 7-2087.

Ray
Neighbors
Drug Store

"Let's Be Neighborly"

1555 W. BERRY ST.

Phone WA 7-8451



ERASE WITHOUT A TRACE ON EATON'S CORRASABLE BOND

Don't sell yourself short at the keyboard. Typing errors don't show on Corrasable. Eaton's paper with the special surface makes perfect papers possible every time, the first time. An ordinary pencil eraser makes a rub-out a cinch with never a telltale trace of evidence.

Corrasable is available in light, medium, heavy weights and Onion Skin. In handy 100-sheet packets and 500-sheet ream boxes. Only Eaton makes Corrasable.

A Berk-shire Typewriter Paper

EATON PAPER CORPORATION E PITTSFIELD, MASSACHUSETTS



Get Your Eaton's Bond
AT
THE TCU BOOKSTORE
IN THE STUDENT CENTER

Reserve Officer Earns \$50,000

From its voluminous bag of tricks, the University's Army ROTC has come up with some figures that can well startle the laggard army-hater.

The reserve officer, according to ROTC wheels hereabouts, can expect to earn more than \$50,000 in his lifetime—for what amounts to incidental military duty.

A college graduate who receives his commission at 22 years of age will spend only two years on active duty, plus 18 years in the active reserve.

After completing his 18 reserve years, the officer can retire and draw full pay, usually as a lieutenant colonel.

Smorgasbord
Special

\$1 per person

Wednesday & Sat. noon

Open Evenings 5 to 10 p.m.
Sat. & Sun. 11:30 to 10 — Closed Mon.

VANCE GODBEY'S

1 1/2 Miles North of Lake Worth on Jacksboro Hwy. — CE 7-2218

"HAVE YOU HEARD THE GOOD NEWS? IT'S EASY TO PAY FOR TSO CONTACT LENSES NOW."

"YOU MEAN THE NEW, TSO SPECIAL STUDENT BUDGET PLAN!"



That's right, TSO now has a special budget plan available to students who are fitted in famous TSO Micro-Sight Contact Lenses.

SPECIAL STUDENT BUDGET PLAN
JUST \$15 DOWN AND \$10 PER MONTH FOR FIVE MONTHS. The total cost for famous TSO SINGLE VISION Contact Lenses is the same... just \$65 COMPLETE with professional eye EXAMINATION — maintaining TSO's long-standing policy of convenient credit at no extra cost.

TSO Contact Lenses are the finest quality lenses available anywhere, at any price.

Directed by Dr. S. J. Rogers, Dr. N. Jay Rogers, Optometrists

TEXAS STATE OPTICAL
CONTACT LENS SPECIALISTS

Consult your telephone directory for the TSO office nearest you



There's almost no place on campus where you can't catch a few extra minutes of last-minute studying. Charles Nevitt, Fort Worth sophomore, racked back the top of his sport car, to get more light on a rather solid subject.

Study in Uncanny

Prize-Winning Film Screened

A Japanese film, "Ugetsu," which won the grand prize at a recent Venice Film Festival, will be presented by the Films Committee in the Student Center Ballroom at 7:30 p.m. today.

"Ugetsu" has been called "an essay on the uncanny." It tells the story of two peasant neighbors who see an opportunity to fulfill their own desires in the confusion of fighting and pillaging by feudal armies in 16th Century Japan.

One of the men, a potter, is ensnared by the beautiful Lady Wakasa, who lures him into her

luxurious mansion where he forgets his wife and home.

The other, a glory-seeking farmer, joins a marauding band and, through deception, wins the honor of a samurai.

Both of the men meet their downfall by the end of the film. The potter learns his wife has been killed by soldiers during his absence. He also discovers that Lady Wakasa is actually the ghost of a young girl who died years before.

The farmer-warrior visits a geisha house to find that his wife has become a prostitute. Both of the men, shocked into reality, return home to resume their former lives.

"Ugetsu" alternates between the violence of the military and the eerie quality of the Lady Wakasa sequences. Reality and hallucination are blended so adeptly, it is difficult to tell where one ends and the other begins. The over-all effect is an "other-worldly" feeling of awe.

Cue Magazine said the film was "wrought in striking artistic form, in which sight and sound are brilliantly merged in powerful theatrical images," and Saturday Review of Literature called the film

"a completely unforgettable experience."

Single admission will be 25 cents.

REGULAR
HAIRCUTS

99c

Mon. Thru Fri.

FLATTOPS

1.25

TANDY

BARBER SHOP

1515 So. University



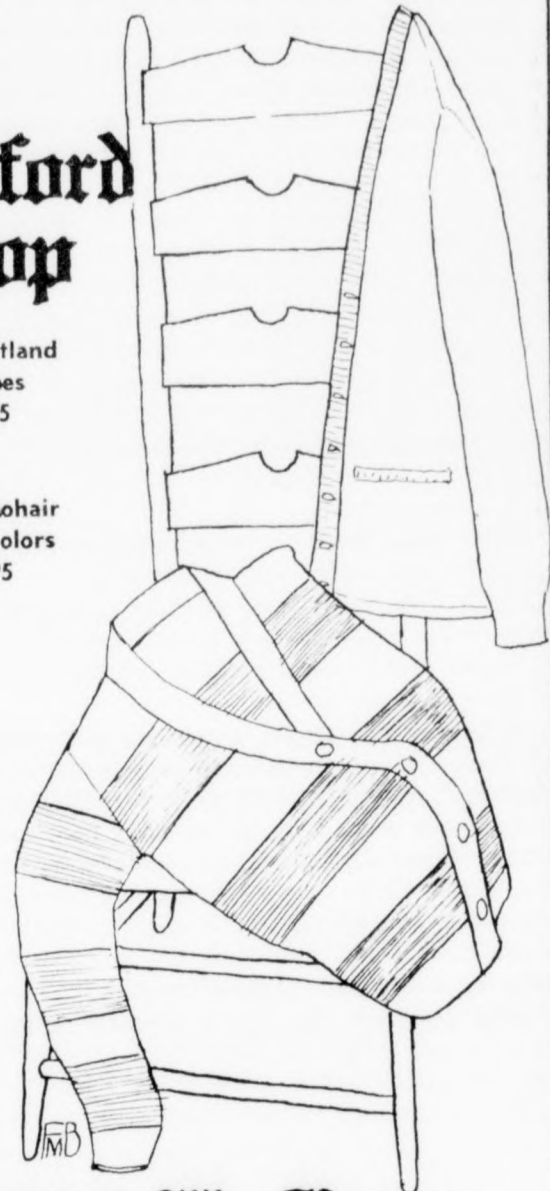
Oxford
Shop

100% Shetland
in Stripes

16⁹⁵

Wool & Mohair
in Solid Colors

13⁹⁵



2918 W. Berry

Style Show Presents Campus Dress

Freshman coeds, unfamiliar with campus customs, are often in a quandary as to what is proper attire for on- and off-campus events.

The sophomore sponsors of Colby Hall Dormitory and the officers of the Association for Women Students have attempted to solve this problem by presenting style shows for freshman women.

Recent shows were held in Colby Hall and Foster Dormitories. The sponsors and AWS officers modeled classwear, dressy clothes, and sleepwear. Helen Gregg, AWS vice president, was commentator.

"Getting to Know You" was the theme of the shows which were designed to welcome freshmen.

Models were Pat Benson, Sue Casper, Sharon Caudel, Jeanne Ericson, Bobbie Evans, Penny Evans, Jeannette Frey, Leeanna Hooker, Mindy Mann, Betty Jean Murray, Lonnie Oglesby, Julie Pazdral, Sharon Turner, April Viewig, Ann Webb, Martha Winston, and Pat Woolridge.

Special guests were Dr. Jo Ann James, dean of women, and Miss Dorothy Shuler, assistant dean of women.

WANT RIDE

From
WESTCHESTER HOUSE
8 MWF 9:30 TTh
PHONE ED 2-6832



BRIDAL
VEILS

Let Barbara Ocone design
bridesmaids' hats and accessories
for your wedding.

Call CI 4-0796



- Swimming Pool
- Air Conditioned
- Restaurant

4 Blocks South of Berry
on North-South Freeway

Hi-Ho
MOTEL

WA 6-0271

TO KEEP YOURSELF LOVELY
Try the Professional Stylists

at

HENRY'S
BEAUTY
SALON

Come in before that big game or special event. Our whole staff is the best in town ready to serve you. For impromptu appointments call us.

Ask for HENRY or PERRY, our male operators or CHARLOTTE, MILDRED, WANDA or ESTHER for special service.

And now Henry's is proud to announce the association of our third male stylist—MR. WAYNE REID.

WA 7-5306

3051 S. University Dr.
Just Across the Street



Dear Barry . . .

It's election year, Barry, and you seek the highest job in the land. But the choice is ours. And we'd like some answers.

The office of President requires stature, bigness of thought, and bigness of action. It is our observation that your plane of conduct is low, your taste poor, your thoughts patetically confused.

We listened at first when you cried foul, and our hearts bled when you claimed to have been misquoted. But you have cried "misquote" again and again. Now you say your words are being "misinterpreted." Your hysterical shouts, personal accusations and cries of scandal—are they to be trusted? Your very words have come to mean nothing.

Barry, let us look at the record. In the past candidates campaigning for the highest office in the land have confined their attacks to their opponents' policies, but never playing the role of God and accusing an opponent of dishonesty and treason. Where is your proof of corruption?

What is your record, Sen. Goldwater? Is it not true that in your stint as Congressman and Senator from Arizona that you authored not one piece of legislation. Is it also not true that all your votes, sympathies, thoughts, and actions were negative then as now?

Barry, your voice has been raised against the way the Democratic convention was "railroaded." Yet moderates in your party have treated your candidacy grudgingly, and have run for office independent of your ticket. Was your convention rigged? If not, why did it leave leading Republicans with bad tastes in their mouths?

Why have newspapers, magazines and publications that have always been Republican in presidential support turned against you? As you go about the land rattling nuclear sabers like toys, look around you at the noisy bunch of supporters you have; those whose bumper stickers have arrows pointing to the right—off the deep end. Traveling a few feet from you on your tour through the South, as your sidekick, was South Carolina Sen. Strom Thurmond, whose political thought antedates the Emancipation Proclamation.

After all, Barry, the time is approaching for the choice. And even you might examine those statements you have made, the names you've called, and the mud you've hurled, and still tell us that it is your opponent who is not worthy.

—Jim Palmer

A Plea for Reason

We think it unfortunate that some Americans have allowed their prejudices and emotions to color their political thinking at a time when reason and rationality count so much.

Take a look at any American newspaper these days and you'll see what we mean: In every letters-to-the-editor column there are examples of unclear, irresponsible thinking on the part of emotional Americans.

We're willing to bet this is what you find:

—Letters equating Lyndon Baines Johnson with Communism.

—Letters equating LBJ with atheism.

—Letters equating the Supreme Court school prayer ruling with a "Communist conspiracy."

—Letters which call the Johnson administration "a God-less dictatorship."

These letters are obviously from people who are in love with "the American way." Only, they don't exactly know what it is.

Many of the letters are from people who profess faith in our Constitution; even though the letter writers have never bothered to read it.

The letters are from persons who advocate a fusion of church and state; even though those "founding fathers" they mention drafted the Constitution to avoid such a government.

The letters are from people who claim they are "standing up for freedom." They don't know the meaning of the word. They have forgotten why their forefathers came to this country.

Of course these people aren't Democrats. They aren't Republicans either. They are something else entirely.

In short, they are Americans who never seemed to learn what America means.

—Mike Martin

LITTLE MAN ON CAMPUS



Letters

Of Particular Interest

Editor:

In catching up on my back reading today, I read the feature article on the security staff on page 2 of the September 25 Skiff. I appreciate the attention you gave and the way in which you presented it.

Cordially yours,
L. C. Smith.

Vice Chancellor for
Student Life.

Editor:

I hate to answer your editorial in the Skiff of September 25, 1964. There is very little to answer. You have stated that some foreigners and one Harvard professor are against Senator Goldwater. You use this as the sole reason for your rejection of the Senator from Arizona. In a university one would expect to find a more mature approach to politics. I am aware that foreigners and even the head of the American Communist Party have called for the defeat of Goldwater. This is one of the reasons that I am for Goldwater.

I realize that my support of Barry Goldwater will make me an extremist in the eyes of some people. Last night, I heard a good definition of an extremist. An extremist, I was told, is a person who thinks there should be more than one television station in Aus-

tin. I also think an extremist is a person who thinks there should have been less than one Bobby Baker in Washington.

In conclusion, if you want reasons to elect Barry Goldwater, I advise you to read The Conscience of a Conservative or Why Not Victory? These are both by Barry Goldwater. For reasons to elect Johnson and Humphrey I guess you would have to check with foreigners or the radical Americans for Democratic Action. (Sic)

Sincerely,
Larry Clore

Editor:

Evening College enrollment this fall is 1,807. Through a transposition of digits, the total was erroneously reported in Tuesday's enrollment story as 1,087.

With about 400 graduate students and 800 or so day students taking courses at night, almost 3,000 students are engaged in classroom study during the late afternoon, night and Saturday hours each week.

Several hundred more are enrolled in special courses! For example, 108 turned out for the opening on Monday night of a special 10-week course for medical assistants.

With more than 200 classes convening at night on campus, only 12 scattered rooms are left unused on varying nights Monday through Thursday.

Warren K. Agee
Dean, Evening College

The Skiff

The Skiff is the official student newspaper at Texas Christian University, published Tuesday and Friday during college class weeks except in summer terms. Views presented are those of students and do not necessarily reflect administrative policies of the University. Represented for national advertising by National Advertising Service, Inc., 18 East 50th Street, New York 22, N.Y. Second-class postage paid at Fort Worth, Texas. Subscription price \$3 a year in advance.

Editor	Jon Hiltunen
Managing Editor	Sandi Major
Sports Editor	Benny Hudson
Assistant Sports Editor	Gary Turner
News Editor	John Thames
Amusements Editor	Mike Martin
Advertising Manager	Dave Sturgiss
Photo Editor	Billy Harper
Faculty Adviser	Lewis C. Fay



Only on Tuesday

By JON HILTUNEN

A friend of ours came by the office with a letter he had received from his brother who had just enrolled as a freshman in another university.

It was the first time his brother had been away from the home-front and, of course, the first time he had been confronted with the big, big world of college.

We believed the expressions and first impressions contained in the note to "big brother," were typical and perhaps not unlike our own thoughts of three years ago (quasi-sophisticated and thoroughly omniscient).

Here then are excerpts.

Letter from Brother

Dear Bob,

Just thought that I might get off my seat and write you a letter. Perhaps you are interested in Trymore U. It is really a great school and there are a lot of cool guys, but maybe I better start in the beginning.

When we got to the campus your predictions came true. Mother was really "in there" with suggestions about fixing up the room and trying to make an impression on the football coach (the latter was part of the welcoming committee.)

Well, the aged-ones left later in the afternoon and I was left by myself. Man, it is really great to be on my own. What a time I am going to have in the years to come.

My room is not all I expected it to be. The walls are a real amazing shade of dirty, creamish, pinkish, tan. Sort of like a mixture of tomato paste and chocolate flour. Also there is a gorgeous crack the entire nine feet from the floor to ceiling in one of the walls. There are chips from past attempts at pounding a tack into the plaster. The floor is a black and green tile, or was at one time.

A Sad Match

My roommate isn't a bad guy exactly. He tries hard but he hides in the room a lot. I think this is because he has acne and has a nervous habit of licking the end of his nose. I guess I could have done worse by a roommate, however. The guy down the hall tells me his roommate has B.O. and has something against brushing his teeth.

The courses here aren't exactly cake or sandpile. Along with a little drinking, it looks as if I shall have to study for the first time in my life. However, I seem to have some good profs. The Anthropology professor is the best of all the professors. He keeps saying, "When college no longer interferes with your education," and things like that. I have thought that I might switch my major from history to anthropology but then the aged-ones might not eat that up in such a big way. Besides, there is this cute girl (perhaps I should have said "beautiful babe" instead of "cute") who sits in front of me in lecture. We haven't had a test yet, but she has suggested we study for it together. I think that is a good idea. I mean after all, if I have to work I may as well enjoy it.

Life's Perfect

Well, as they say, "the world goes well," and the old kid (that's me) is hanging in there. Say, you want to know a real bear of a drink? Try scotch and Hawaiian Punch. Also, beer and vodka mixed isn't bad if there is nothing else.

Write, you old leecher.

(Signed) With a flair for life, your "Big Brother."

Our comment: We can't wait that long. What is your cable address?

Cotton Maid Focus On Campus This Week

Excitement, glamour, and the fierce glow of publicity may fall to the lot of a coed now in our midst—if she is chosen 1965 Maid of Cotton.

The spotlight will focus on University coeds Oct. 7 as a part of the nationwide search for the new queen begins.

Ed White, representative of the National Cotton Council in Memphis, will visit our campus seeking likely candidates for the title. He will meet with campus leaders and school officials during his visit.

The quest for the next Maid of Cotton is being centered on the campuses of the leading colleges and universities in the Cotton Belt.

Off to Europe

A week after her selection, this lucky miss will be off to Europe for the first of two such tours. She will be guest of honor at a week-long fashion festival in Amsterdam

sponsored by the Netherlands Cotton Institute. During the festival, she will be photographed in high fashion cottons created especially for her by well-known Dutch designers.

The 1965 Maid of Cotton's initial appearance as the cotton industry's fashion and good will "ambassador", will be at the Cotton Bowl Festival in Dallas on New Year's Day. She will then fly to New York to be fitted with an all-cotton wardrobe for her subsequent tours of Europe, Canada, and the United States.

To Fly To Canada

The Maid will fly to Canada late in January for two weeks of fashion shows and good-will visits prior to opening her tour of the United States.

The selection and tour of the Maid of Cotton are sponsored annually by the National Cotton Council, the Memphis Cotton Carnival Association, and the Cotton Exchanges of Memphis and New York. Entry blanks may be obtained from the National Cotton Council, 1918 North Parkway, Memphis 12, Tenn. Entry deadline is Nov. 30.

Forms Available

Application forms for National Science Foundation Cooperative Fellowships and Summer Teaching Assistantships are now available in the office of Dr. Sandy A. Wall, Associate Dean of the Graduate School.

Professors in chemistry, biology, geology, math, physics, and psychology should notify their graduate students.

TCU Barber Shop

3015 University Dr.

"Flat-tops a specialty"

Recipes to Records

Documents on Deposit

Everything from recipes to the Congressional Record is on deposit in the government documents section of the Mary Coats Burnett library.

Designated by law as one of the 31 depositories for government documents in Texas, the Library contains some 2,000 separate items published by the government.

Monthly catalogs dating back to 1895 list the books, periodicals, and pamphlets to be found in the closed stacks. Reports released from each of the Cabinet departments, federal agencies and commissions, as well as Congress, are among the documents.

Information on almost every subject is available there, according to the head reference librarian. The monthly catalogs have been made accessible in the reference room for the first time this year in an effort to acquaint the students with the information available to them.

These indexes are marked as to the documents which are available in the library. Miss Faris said the

student usually needs assistance in finding materials there, but she stressed that reference librarians are quite willing to help the students.

The collection includes the Congressional record back to 1789, and reports of such committee hearings as the TFX contract. The Warren Commission's report is soon to be added to the stacks. The brief original reports will be added within a few days, and the complete report, consisting of some 25 volumes, eventually will complete the stack.

Last Day To Drop With 'W' Oct. 15

The last day for dropping courses with a "W" rating will be Oct. 15. After that date all withdrawals will be indicated on transcripts as "W.P.," withdrawn passing, or "W.F.," withdrawn failing.

Your Host:
HOWIE WRENTMORE

THE HOUSE OF MOLÉ

Fort Worth's Most Unique Restaurant

2400 Park Hill Drive
At Forest Park

WAlnut 1-1682

Select Series Tickets

Still Available

Although many students have apparently overlooked the benefits of owning a Select Series ticket, a reminder may enable you to purchase one while it is still possible to do so.

A strong pitch for the Series will be greatly appreciated by the Select Series Committee.



Best by Far

Choose your class ring from a wide selection of stones, styles, weights and 3rd dimensional Greek letters. Priced as low as \$28.

Kubes Mfg. Jewelers

2715 W. BERRY
WA3-1018



SWEATERS—as many as the pocketbook will allow. Sweaters are the most individual fashion expression of the average college man. They are used constantly for light jackets in mild weather and for extra warmth in cold. Mix them; use half pull overs and half cardigan. We particularly want to show you our imported shetlands, by preference year after year **THE COLLEGE SWEATER.**

Cardigan \$20.95

Pullover \$14.95



The Clyde Campbell University Shop

808 Houston—Downtown
3023 University Drive
Across from TCU

Campus 'Split' Fails To Develop

When the move of the fraternities and sororities was announced last year it created quite a stir among several students and faculty members.

"Will there be a campus split?" they asked. "Will the Greeks keep to themselves and will their move antagonize the student body?"

The answer to all questions was a resounding "no".

Last year these questions were posed to Dr. L. C. Smith, Vice-Chancellor for Student Life. He recalled the answers he gave last year and renewed his position as the new year began.

No Split

"There is not a campus split for several reasons," Dr. Smith said. "Since there are approximately 75 members in each fraternity and sorority and only 34 and 36 spaces in each fraternity and sorority section respectively, Greek members will not be completely isolated.

Intramural Greek Games Set

The first Greek intramural pigskin will fly today as Kappa Sigma tackles Sigma Phi Epsilon at 3 p.m. on the intramural field.

Phi Kappa Sigma and Phi Delta Theta will clash at 4:30 p.m., completing the first of 14 double headers to be played by the fraternities this year.

The Greek version of touch football will again swing into action Thursday at 3 p.m. when Delta Tau Delta meets Sigma Chi. This game will be followed by the Lambda Chi Alpha and Sigma Alpha Epsilon game at 4:30.

All fraternities will play once a week on either Tuesday or Thursday for seven weeks. Competition is scheduled for completion November 19.

If time permits the independent championship team will meet the first place Greek team in an all-intramural game after the regular season is completed.

Coffee For Parents

Members of Kappa Delta sorority plan a coffee for their parents Saturday from 3 p.m. to 5 p.m. preceding the Parents Weekend Banquet.



ANN COMPERE
Kappa President

Other members still will be living in other dormitories on the main campus with non-Greeks," he said.

"In addition Greek members attend the same classes and most eat their noon meal in the same cafeteria as other students," he continued.

"This is not a critical problem," Dr. Smith continued. "Everyone

who has discussed the situation with me has either felt there is no problem or that it is considerably less pressing than they had felt," he said.

Reminiscence

Dr. Smith said he tells the inquirers about the first time he came to Fort Worth.

"When I moved to the city there was ill will expressed toward Wedgewood addition, which was split off from the city. Look at this development now," he said.

"Some people see the campus split as a threat, just as they view all people who live in Tanglewood addition 'stuck up'," he continued.

Dr. Smith said the same stereo-

type is prevalent on campus as it is in the city. The situation, however, is no worse than it was last year.

Certain Feeling

There will always be a certain feeling toward fraternities and sororities. He said some independents will not like members and some members will think they are superior to independents. This was the situation in the past and it probably will continue.

"The campus can be divided into many different segments," Dr. Smith said. "There is the Business School, School of Fine Arts, and AddRan College of Arts and Sciences. All of these are split, but they all have strengthened the University. There is a differentiation between the colleges as there is between the Greeks and independents now," Dr. Smith said.



Fall pledges completed the last segment of pledge lines Sunday when the ten sororities again opened their chapter rooms to the eight fraternities' pledges.

Glamour Groups Pledge 46

There are 46 reasons why Air Force and Army ROTC units will be marching better this year. They are the new pledges of Angel Flight and Corps-Dettes, who will be marching in front of them.

Rush for the two groups was held Sept. 29 through Oct. 1. Angel Flight pledged 24 girls and Corps-Dettes, 22. The organizations act as auxiliary units for the Air Force and Army ROTC and assist them in various activities throughout the year.

The new Angel Flight pledges are April Vieweg, Kay Boruff, Susan Gray, Penny Evans, Sue Caldwell, Judy Cisel, Claire Thompson, Risa Thompson, Mary Ann Hamilton, Sara Walker, Diann Newmann, Carole Haggard, Debera Short, LeGrande Jones, Carolyn Breeding, Jan Keen, Candy Lee, Holley Sparks, Mary Walsh, Susan Cole, Karen Smith, Mariet Bjeland, Millie Hopkins, Carol Pavlic.

Corps-Dettes pledges include Ann Schoenfeld, Donna Lamberson, Pam Brazil, Judy Anderson, Judy Abington, Carolyn Clemons, Jane Brown, Barbara Glasser, Jo Woods, Carol Jean Cauthen, Linda Williams, Betty Jack Cooper, Sharon Saylor, Mindy Kestor, Shela Roden, Cheryl Casey, Carole Herring, Carolyn Ramsey, Judy Hill, Donna Murry, Mitt Edwards, Suzette DeGeurin.

GREEK FORUM



Fraternities and sororities are spending long hours each week on signs to hang out of their dorm windows. Lambda Chi Alpha gets into the act with the longest sign of the week. Last week the case at point was Arkansas.

KKG Names Year's Leader

Kappa Kappa Gamma will be headed by Ann Compere, Fort Worth senior, this year.

Miss Compere, 20-year-old elementary education major, is also a member of Angel Flight, Bryson Club, Ampersand, vice-president of the Association of Childhood Education and secretary of the Student Education Association.

Miss Compere was pledged in 1961. During her junior year she held the position of rush chairman in the sorority.

During her years at Paschal High School, her main interests lay in the activities of the Musagetes charity club and the FTA.

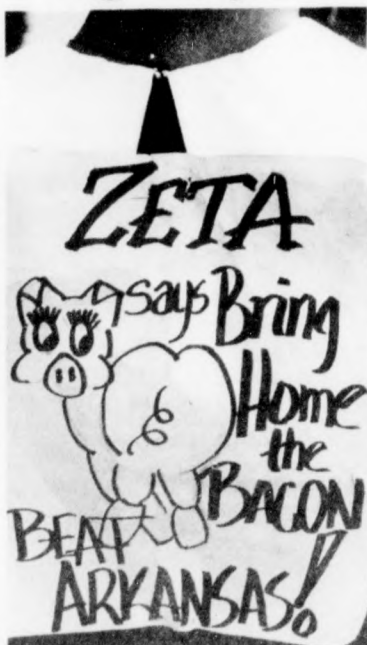
This fall Kappa Kappa Gamma pledged 26 girls, raising their total to 74.

The Kappas placed third in Sigma Chi Derby Day last year.

Their community project for this year will be an Easter egg hunt for the orphans at the All Church Home.

The president of Kappa Delta will be presented in this column in the next Greek Forum.

Signs Pitch Frog Hopes



The girls also got into the spirit act with a display of signs on their dresses. Signs of all sorts are gaining in popularity this year.

President For Kappa Sig

John Truelson, Fort Worth senior, is calling the signals for Kappa Sigma this year.

Truelson, 21-year-old history and economics major, was treasurer and IFC representative for the Kappa Sigma his junior year.

At Arlington Heights High School Truelson lettered in football, basketball, and track. He won all-district honors in football and fifth in state for the discus throw.

Since coming to TCU, Truelson has been on the track team as a discus hurler.

The Kappa Sigma chapter took 28 pledges this fall raising their total to 65.

Last year the chapter won first in intramural golf.

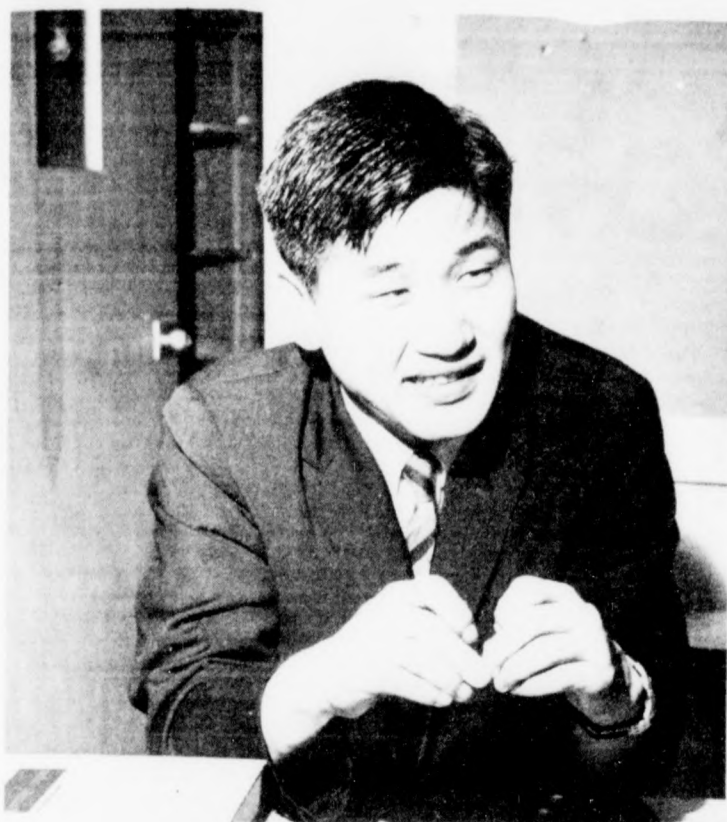
Both pledge class and active chapter have community projects this year. The pledge class, with help from the active chapter, is helping with the CESCO program. The active chapter is planning a party for the orphans of the Fort Worth area.

The president of Delta Tau Delta will be presented in this column in the next Greek Forum.



JOHN TRUELSON
Kappa Sig President

Student Recalls First Coke, Tells of Bombings on Sunday



CHUNG SHICK KIM, SEOUL SENIOR
Enjoyed first Coke in America

Chung Shick Kim, Seoul, Korea, senior, likes Cokes. But he recalls the first one he had on American soil was the best, even though it took the longest to get.

On his initial flight to the mainland, the plane had a stopover in Hawaii. He stood fumbling in front of a Coke vending machine, puzzled as to which of the American coins he should use to get the bottle.

A kindly native understood his predicament and pointed to the dime in his hand. Chung said, "I believe that one tasted better than any Coke I've had since."

Not as a Stranger

Chung Shick Kim is no stranger to the United States, having been here at the University for three years.

He is scheduled to receive his bachelor's degree in mathematics

this spring, and plans to attend another university, possibly in Chicago, for a second bachelor's degree in mechanical engineering.

Notes Differences

When asked why he chose TCU, "Kim" said, "A close friend was graduated from here a few years ago, and told me about TCU, so I decided to come here too."

Discussing the differences between the two countries, "Kim" said that Korea is more mountainous, green and humid than Texas. He also noted the vast opportuni-

ties for young people in the U.S., and the fact that women drive taxicabs, which is uncommon in his country.

Relating his experiences during the Korean War, "Kim" told of a particular Sunday when Allied bombing was unusually heavy.

He said his people were surprised by the attacks on the industrial areas, because, "We had heard the Americans were so religious they wouldn't bomb on Sundays, but we were glad they came. The Korean people hate the Communists, and I prayed for the soldiers."

Campus Elections To Use Voting Machines Oct. 14

Students will be using voting machines for the first time in the campus elections on Oct. 14 and 16.

There will be two machines in Dan Rogers Hall, one in Undergraduate Religion Building, one in Winton-Scott Hall, and three in the Student Center. Voting stations will no longer be in the Bailey Building, Ed Landreth Fine Arts Building, or Harris School of Nursing.

"TCU does not have to pay for the use of these machines, which have just been acquired from the County Commissioner's office. Our only cost will be for the printing of the ballots to be used in the machines," said Jim McDonald, chairman of the Student Congress elections committee.

The newly adopted election code revisions have been changed to allow the use of voting apparatus

rather than ballot boxes, and to provide for the tabulation of ballots.

As John McDonald, Student Congress president, noted, "The machines are easier to use and the use of them will provide civic and educational benefits for the students."

FOUND A Pair of TSO Contacts at Jet Cleaners

3021 University
WA 7-9224

Come and Claim if They're Yours

Good Men To Know If You Drive A Chevy (or want to!)



Pat Lobb Mike Allen Ruel Brown



James Allen Gerry Tyson

Meet your Ernest Allen Campus Representatives, TCU students who work with us when they're not busy with school work.

Whatever your transportation needs, from a minor repair on your present car to a shiny new Chevy, let one of them give you a hand.

They can tell you from experience why Ernest Allen Chevy has been the dependable choice of TCU students for more than 40 years.

ERNEST ALLEN
Chevrolet SINCE 1922
6th & Commerce Downtown ED 2-4171

Greek Jewelry

For IMMEDIATE DELIVERY

Drops • Recog. Pins • Crests
Pledge Pins • Rings • Charms

Free Delivery Right to the Dorm

ENGRAVING • SPECIAL ORDER WORK
WATCH & JEWELRY REPAIR • SOLDERING

Kubes Mfg. Jewelers

'Across Street From University State Bank'
2715 W. BERRY WA 3-1018



In library or dorm . . . these crisp, trim casual pants set a relaxed mood. Lean and tapered . . . cuffless . . . and in deep, muted plaid highlights. Sensibly priced at 3.95.

Buckaroo CASUALS



SMITH BROTHERS MANUFACTURING COMPANY □ CARTHAGE, MO.

Famous make Reconditioned Typewriters
\$49.50 up
\$1.50 weekly, \$5 down

TYPewriter SUPPLY CO.
5th & THROCKMORTON

Sales Service Rentals ED 6-0591
Modern Features Guaranteed for 1 year

'65 KICK OFF CELEBRATION!

\$500 Education Fund for some lucky Tarrant County student.



Two pairs of tickets to a TCU home game each week.



Five pairs of tickets each week to the high school game of your choice in Tarrant County.

Nothing to buy. Just come in and register. Ticket winners will be announced each Wednesday. Grand prize winner will be announced October 31.

SPECIAL BONUS GIFT! Free 8 x 10 photo of your favorite football team (all Tarrant County high schools, TCU and ASC)

COME IN NOW AND SEE THE NEW '65 CHEVY HOTTEST CAR ON THE FIELD THIS FALL!

Open evenings for your convenience

ERNEST ALLEN
Chevrolet SINCE 1922
6th and Commerce Downtown Edison 2-4171

Hud's Huddle

By BENNY HUDSON

Arkansas assistant coach Jim Mackenzie said recently he never hears fans during a game, but there was one exception: "It was 1958, our first year at Fayetteville and Rice was humiliating us, 24-0. . . . There was a lull during a timeout or something and from out of all that silence came this one leather-lung yelling, 'Hey Frank (Broyles), how about a trick play?'. We lost six straight games, then won our last four.

"We were beating SMU at Fayetteville and it happened again—same voice, same location in the stands—and I can hear him now 'We're ALL behind you, Frank'."

Rice center Malcolm Walker is bothered by continuing foot aches: "And when my feet (size 14 shoe) hurt," says Walker, "that's a lot of pain."

Humble's ace announcer Kern Tips will deliver an estimated 265,000 words on SWC football games this season.

When the Florida State boys were on campus last week some people were commenting about their practice of shaven heads. Frog end Darrell Mott didn't seem to think much of the idea and said, "I have enough trouble getting dates without going around bald."

Lawrence Elkins, Baylor's end who was the national champion pass receiver last year and may repeat this season, will have a rough time being the champion pass receiver in Waco. Across town from the Bruins at Waco High end Steve Garrett caught 13 passes for 168 yards against Temple High.

While we're speaking of Baylor and passing, a local sportscribe said, "If the Book of Bridgers (John, Baylor coach) was ever written, it would begin with 'and it came to pass"

Browsing through the pro-football rosters I see 14 names that I can recall as Southwest Conference quarterbacks in recent years. These include Frank Ryan, Don Meredith, John Roach, King Hill, Buddy Humphrey, Lamar McHan, Don Trull, Cotton Davidson and Tobin Rote, who all are still manning the quarterback slots.

I also notice former SWC slotmen Bobby Ply, Duke Carlisle and Randy Kerbow are at other positions plus Tommy Wade and Sonny Gibbs are playing in the minors.

When Mississippi State aide Vic Spooner turned in his scouting report on Texas Tech the conclusion read: "The only thing bad about this team is their horse (mascot)."

It's been 15 years since Joe Watson of Rice was named to the all-SWC team three years in succession, he being the last player so to be named but Texas Donny Anderson and Tommy Nobis, both all-conference selections last season as sophomores, are making a strong attempt to break the 15-year drought.

Skiff Sports

Tuesday, October 6, 1964

Page 8



RANDY HOWARD PLUNGES TOWARD RAZORBACK LINE.
Fourth quarter interceptions, however, stopped the Frogs cold.
(Photo by Lynn Ligon)

'Jolly Green Giant' Ready for Pro Ranks

By GARY TURNER

"Ken Henson will probably be one of the highest paid rookies in the pro ranks next semester," said Jim Brock, of the Frogs' "Jolly Green Giant," who by the way, is not known for his friendliness in the gridiron.

Henson was drafted last year by the Los Angeles Rams in the National Football League and in the American League the Houston Oilers hold draft rights on the big center from San Angelo.

Future plans include pro football and taking advantage of his education in the business field. "Through playing pro football I can meet a lot of influential people that can serve as job contacts," said Ken. "This way I can be working during the off season."

No Preference

Henson has no preference between the teams but he did comment that he would go with the team that offers him the best benefits. "Right now," he said, "I believe the NFL has more to offer (in the range of player benefits) than the AFL, but I'll go with the one that shows the most need for me."

High school days in San Angelo started the sparkle of stardom in the 6-6, 250 pound senior. Ken was an all-state football selection, state discus champ, and was runner-up in the shot-put.

This is Henson's second year in a row to be on the Tom Harmon pre-season all-America poll. Ken was also named to Playboy Magazine's all-America squad.

630 Minute Player

One of the giant Henson's feats include the accumulation of more than 630 minutes of playing time in two years. He has received six most valuable lineman awards, given by the Frog Club after each game.

About the Frogs, Ken says: "It is really a pleasure to play on a team like this, because this is the first year that everybody is in

shape and acts as though he wants to abide by the training rules. This shows me that we have a group of guys that want to win. I like that"

Henson said this team seems to realize its purpose. "Each of us has the purpose of becoming part of a football team that everyone can be proud of—not to compile individual recognition or personal feats," he said

Confident of It

The big center stressed confidence in the Frogs' new flip-flop offense by saying that it simplifies the plays for the linemen and the backs. "As soon as the play is called everyone knows exactly where to go," he said. "That way there is less confusion because of mixed signals."

He also commented that with a runner like Jim Fauver it gives the Frogs a greater punch than running off the standard T-formation.



KEN HENSON
All-America Prospect

Hogs Prevail Over Frogs

By BENNY HUDSON

TCU mentor Abe Martin predicted last week that his Horned Frogs would score against Arkansas last Saturday and they did just that, and nothing else.

Martin currently is altering his offense in preparation for the TCU-Texas Tech duel scheduled to take place in Amon Carter Stadium Saturday night.

The Frogs sputtered through the first three quarters without an offensive threat, then Martin sent in Kent Nix to command the Purples to their first touchdown of the season, but the Razorback offense scored four times to nab the victory, 29-6.

With Arkansas leading 14-0, Martin called on Nix to lead the Christians. Nix took over on the TCU 30-yard stripe, and an interference call set the ball on the TCU 45, first and ten.

Campbell Scores

Nix tossed the ball to Sonny Campbell on the next play for 25 yards, giving the Purples a first on the 30. Nix sneaked the ball on a draw to Ernie Bayer for four yards and two quickie passes of 6 and 7 yards, respectively, set the ball on the Arkansas 13.

Nix fumbled but fell on the ball and lost back to the 15. On the next play Nix tossed the ball to Campbell and he drove across for the score, climaxing the 70-yard drive.

Frog halfback Jim Fauver, the No. 5 rusher in the nation before this week's game, was held to fifteen yards on the ground, but tossed one pass for 20 yards.

Arkansas Scores First

Arkansas drew first blood in the second quarter when quarterback Freddie Marshall jumped in from the one to climax a 47-yard drive. The big play in the drive was a 20-yard pass from Marshall to Braussell that set the ball on the TCU 2-yard mark.

With 8:23 showing on the clock, Tom McKnelly made the conversion to put the score 7-0, Arkansas.

Late in the fourth quarter the Porkers initiated a scoring attempt on the TCU 40 and pushed the 40 yards in 8 plays with Billy Gray carrying the pigskin over from the five. McKnelly converted to make it 14-0.

Late in the fourth quarter Harry Jones intercepted a Nix-launched pass on the TCU 24 and danced his

way to the end zone and was followed by McKnelly's third conversion to make it 21-6.

With 3:35 left in the game, Gray intercepted Nix's pass and returned it to the TCU 11. Four plays later Bobby Burnet scored. McKnelly added two points to make it 29-6.

Wogs To Host Texas A&M Fish Wednesday Nite

Coach Fred Taylor will unveil his 12th freshman squad to an expected 25,000 fans Wednesday night as the TCU Wogs engage the Texas A&M University Fish in freshman competition opener at Amon Carter Stadium.

Thousands of special tickets were circulated among city merchants for the game sponsored by the TCU Ex-Lettermen's Association. One of the tickets and 25 cents will be good for one admission. Students will be admitted by activity card.

Sparked By All-Americans

Taylor's 1964 unit, headed by high school all-America tackle Steve Barber of Spring Branch and center E. A. Gresham of Graham, plus several all-state selections, have been working out since mid-September.

"The rains have thrown us a little off schedule, but our conditioning has come along fine, and I believe we are ready for A&M," Taylor said.

The end positions of the Wog line are held up by two all-staters, Steve Jamail from LaMarque and Gordon Nees of Graham. Barber and Bobby Young of Hillsboro are controlling the tackle positions.

Shabay Leads Pack

Jim McGarth of Wichita Falls and Bill Page of Austin have made the top bids for the starting roles at the guard positions and Gresham will be dividing time with Rocky Goodman of Spring Branch at center. Gresham and Goodman also serve as linebackers on defense.

In the backfield P. D. Shabay, another all-stater from Graham, heads the pack. Backing up Shabay will be Kenny Post at fullback and possibly David Kline at one halfback with Steve Landon at the other half.

Skiff Football Contest

FOUR TICKETS GIVEN EACH WEEK TO WORTH THEATER

CONTEST RULES

- Contest is open to TCU students ONLY.
- Only ONE entry will be accepted from each contestant and EVERY game must be picked.
- Contestants must pick total points on TCU game each week end, in case of a tie, contestant coming closest each week will be declared the winner.
- Entries must be received in box marked "Skiff Football Contest" at the candy counter in the Student Center by 6 p.m. Friday.
- No member of The Skiff staff is eligible for prizes.
- Winner will receive four passes to the Worth Theater.
- Entries will be judged by sports editors of The Skiff.

Tex. A&M vs. So. Cal. Texas vs. Oklahoma
Baylor vs. Arkansas LSU vs. N. Carolina
Rice vs. Stanford Kentucky vs. Fla. St.
TCU vs. Tex. Tech. Kansas vs. Iowa St.

Total Points TCU vs. Texas Tech

NAME

ADDRESS PHONE