

## STUDENTS VIE FOR 44 OFFICES



### Dr. Cecil Named Assistant Dean of Add-Ran College

Dr. Moffitt L. Cecil Jr., a member of the English department faculty since 1950, has been named assistant dean of the Add-Ran College of Arts and Sciences.

The announcement was made by Dr. M. E. Sadler, president. The appointment is effective July 1.

Dr. Cecil will assume some of the administrative duties of Dean Jerome A. Moore and continue some teaching. Add-Ran College is the largest of TCU's eight schools and colleges with 2,237 students during the last school year.

A native of Spartanburg, S.C., Dr. Cecil took his B.A. degree from Wofford College in 1935, his M.A. from Duke University in 1938 and his Ph.D. from Vanderbilt in 1947.

He taught at Spartanburg high, Vanderbilt and Texas Tech before coming to TCU as assistant professor of English in 1950. He was made full professor in 1954.

During World II, he was a lieutenant colonel in the Army Transportation Corps, serving in the Philippines and Korea.

### New Committee to Study TCU Student Life Program

A committee for studying the University program of student life has been appointed by Dr. D. Ray Lindley, executive vice president of the University.

The committee is organized under Section I of the University-Wide Self Evaluation Study.

Nine faculty members of two student representatives have been asked to serve on the committee.

Charles P. Foote, instructor in accounting, was asked to serve as chairman.

Others on the committee include the Reverend James A. Farrar, director of religious ac-

**SPRING SIGNS**  
Miss Rosemary Rait, Houston freshman, admires the flowers on campus, signs this week that spring is here despite chilly weather. Another kind of spring signs will appear next week when elections get underway.  
—Skiff Photo by James Duty.

### ROTC Cadets Fight Flames

The command "Fire" had more than the usual significance during the ROTC encampment at Camp Wolters recently.

Six hours after the Army ROTC units had withdrawn from an area used for a mock battle,

fire broke out and destroyed several hundred acres of grassland.

The verbal order "Fire" took on a new meaning for approximately 100 cadets as they laid down their rifles and took to the bucket brigade in an attempt to control the windswept blaze.

Capt. Edward Murphy said the fire broke out about noon and 30 cadets remained until 6 p.m. controlling the blaze with the aid of Camp Wolters Fire Department.

"The complete trip was a success—the battle and the fire," Murphy said.

### Candidates File Today

A formal filing session for all candidates vying for an office in the spring election is scheduled for 5 p.m. today in the Ballroom.

Attendance is compulsory for all candidates. They are to submit their filing forms to the election committee chairman.

An election rally is scheduled for April 23, also in the Ballroom. Candidates for major offices will make 2-minute speeches, and cheerleader hopefuls will lead practice yells.

### April 29, May 1 Dates Set For Spring Elections

Forty-four campus offices will be at stake in the spring elections scheduled for April 29 and May 1.

Elected will be Student Congress president, vice president, secretary and treasurer, Activities Council director, one representative each from the School of Fine Arts, Harris College of Nursing, Brite College and Graduate School, two each from the schools of Business and Education and four from Add-Ran College.

Also two representatives each from the junior and senior classes and four from the sophomore class, eight cheerleaders, Skiff and Horned Frog editors, TCU Sweetheart and eight Summer Congress members-at-large.

Student Congress president must have completed 73 semester hours with a minimum overall grade index of 2.5.

Vice president and Activities Council director are required to have completed a minimum of 44 semester hours with a 2.5 minimum overall grade index.

Secretary and treasurer must have 44 semester hours credit with a 2.2 minimum overall grade average. The secretary must be able to take shorthand or speed-writing and type at least 40 words per minute. The treasurer must have taken one year of accounting with a minimum grade of "C".

Representatives of the various schools and colleges must have

completed a minimum of 44 undergraduate hours with an overall grade index of 2.2.

Minimum grade index of class representatives is 2.2. Senior representatives must have completed 73 hours, juniors 44 hours and sophomores 12 hours.

Cheerleader candidates must be approved by a screening committee composed of the band director, two student members appointed by him, the social director and one faculty member from the physical education department. Grade index requirement is 2.0 for a minimum of 12 hours.

Skiff and Horned Frog editors must be approved by the publications committee and have a 2.0 minimum overall grade index. Skiff editor must have completed Journalism 333ab with a minimum average of 3.0 before assuming office.

TCU Sweetheart must be nominated at the filing meeting in the Ballroom today although candidates themselves do not

Turn to ELECTION on Page 6

### Select Series Recital Tonight By Guitarist

Currently celebrating the 31st anniversary of his United States debut, world-famous Spanish guitarist Andres Segovia will come to TCU for a concert at 8 p.m. today. The program will be in the Ed Landreth Auditorium.

It will be the seventh presenta-

tion in the current Select Series at the University. Admission is by season ticket, but individual seats will be sold at \$2 each on a space-available basis the night of the concert.

Segovia will include on his program music by such classic composers as Mendelssohn, Scarlatti and Bach, of whose music the guitarist has long been recognized as a leading interpreter.

Born near Granada, Segovia made his first concert appearance there at the age of 14. Each year he plays nearly 100 concerts in South America and Europe in addition to his regular tours here.

His program at TCU will include "Six Little Pieces for Lute," by Galileo; "Prelude, Passacaille, Gigue and Gavotte," Roncalli, and "Introduction and Allegro," Sor.

"Siciliana and Gavota," Bach; "Sonata," Scarlatti; "Romanza" and "Canzonette," Mendelssohn; "Study in A Major," Tarrega; and "Sevilla," Albeniz.

"Piezas Caracteristicas," which Segovia will also play, was dedicated to him by its composer, M. Torroba.

The final program on the third annual Select Series at TCU will be on April 30 when General Carlos P. Romulo of the Philippines will speak. He was president of the fourth United Nations General Assembly and is the present Philippine ambassador to the United States.



ANDRES SEGOVIA and Friend



## Campus Carousel

By J'NELL ROGERS

### Miss Sylvia Cowdin...

... Fort Worth senior, will be married to Charles Patrick Fisher, B.A. '53, in St. Andrews Catholic Church on June 13.

### Pinned are...

... Miss Margaret Gorman, Winnsboro sophomore, and John Cantrell, Pampa senior. Miss Gorman is a member of Chi Omega, Cantrell of Delta Tau Delta.

### Miss Annette Smith...

... Midland junior, is engaged to James Reid, a graduate student at Southwestern Baptist Theological Seminary. They plan to be married at Crestview Baptist Church in Midland, June 6. Miss Smith is chaplain of Mu Phi Epsilon.

### Married March 30...

... were the former Miss Faye Kohler, Manvel senior, and Jerome Truskowski, a student at the University of Wisconsin. Mrs. Truskowski is a student of the Harris College of Nursing.

### Miss Emily May...

... Fort Worth sophomore, and Pvt. James Angel of Fort Devens, Mass., plan to be married at 7:30 p.m., June 13, in Memorial Chapel of First Methodist Church here.

### Also engaged...

... are Miss Mary Hart, Fort Worth junior, and Dwight Florence of Fort Worth. They plan to be married at 8 p.m., June 26, in the Chapel of the Good Shepherd, University Christian Church. Miss Hart is a member of Delta Gamma. Her fiancé is a graduate of Ohio State University, where he was a member of Theta Chi.

### Memorial Chapel...

... First Methodist Church, will be the scene of the wedding of Miss Mary Ann Juran, Fort Worth sophomore, and Gordon Gibson of Fort Worth. Gibson is a graduate of Texas A&M.

### Miss Anne Sisterson...

... McKinney junior, is engaged

to Glenn Halsell Jr., a graduate of Texas A&M. Miss Sisterson is a member of Kappa Alpha Theta.

### Pinned recently...

... are Miss Patsy Posey, Fort Stockton sophomore, and Bill McClure, ex '59. Miss Posey is a member of Chi Omega and McClure of Sigma Alpha Epsilon.

### Miss Linda Dallas...

... Fort Worth junior, and Thomas Clark were married April 2 in the Chapel of the Good Shepherd, University Christian Church. Mrs. Clark is a member of the Horned Frog staff. They will reside in Fort Riley, Kan.

### Engaged are...

... Miss Janice Barnard, Fort Worth junior, and Stephen Morgan, Fort Worth senior. They plan to be married in Martha C. Nored Chapel of Central Methodist Church June 12. Miss Barnard is a member of Alpha Gamma Delta. Morgan is a member of Sigma Phi Epsilon.

### Fine Arts Students Will Narrate Dallas Ballet

Fine arts students will narrate the ballet version of "Pippa Passes" to be presented April 30 in Dallas.

Describing the parts of students in the first act of the ballet are Ronny Johnston, Dick Williams and Buddy DeLette.

## Miss Rodgers To Study Abroad

Miss Lucy Rodgers, of Reedsville, Pa., sophomore, has been accepted as a student for the Junior Year Abroad, 1959-60, the director of the Institute for American Universities announces.

Miss Rodgers, a government major, will combine a year of living in France with a year of regular American university studies at the Institute, which translates work done in Aix into American university credits.

The town of Aix, 18 miles from Marseille, is noted for its university founded in 1409. It also is famous as an 18th Century city which has remained intact to this day its mansions and chateaux preserved as they were 200 years ago.

Besides a vigorous intellectual life, the Institute provides facilities for other European travel and sports; tennis, golf, swimming on the Riviera or in Aix's ancient Roman baths, as well as excursions along roads made famous by Cezanne's paintings and to cities that still have their Greek, Roman and Medieval mountains.

## English for Students, Immigrants

### Language Prof Teaches Unusual Foreign Tongue

By JUDY ARNST

One of the most unusual courses at TCU is "English as a Foreign Language" which is taught by Dr. George D. Crow, assistant professor of Spanish. This course is designed for people from foreign countries who want to learn more English.

There are two types of students in this class. One group is made up of regular TCU stu-

dents who need a better knowledge of English to help them in their other classes. The other group is made up of people who attend no other classes at TCU.

This class is associated with the District Court which sends many new immigrants to the class. The nationalities included in the class are Japanese, German, Hungarian, Korean and Spanish-American.

The entire class is conducted in English. Foreign languages are not used. Pictures and pantomimes are used to help the students understand new words. They learn to build simple sentences around phrases, pictures and charts and then advance to more difficult material. Dr. Crow finds that the students learn rapidly.

The materials used in this course are published by the University of Michigan, a pioneer in the field of teaching English as a foreign language.

The students are tested on vocabulary, comprehension and pronunciation. As soon as they are capable, they are advanced to regular classes.

## WAS PARIS MANAGER?

Dr. Karl Snyder cites a past year's English workbook exercise as a refreshing change from the norm.

One sentence reads: "Helen, did you know the Troy Motor Works shipped a thousand launches last year?"

## Angel Flight Entertains

Angel Flight entertained the Arnold Air Society at a picnic in Rockwood Park yesterday.

## Spring Election Candidates!

To enable you to use The Skiff's campus-wide circulation of 4,500 copies in your campaign without exceeding your budget, we are offering advertising space at one-half our regular local rate to spring election candidates.

Student campaign rates are fifty cents a column inch, with a minimum of four column inches per insertion. A column inch is a unit of space one column (about two inches) wide by one inch deep.

Campus organizations, individuals and "tickets" are invited to run ads larger than the 4-inch minimum and pro-rate the cost to each candidate's allotment.

Copy should be typewritten. Cash payment is required before publication.

Copy for the April 29 issue—the date of the election—should be submitted by April 24 to John Farr, Business Manager, at The Skiff office, Room 117C, in the south end of Rogers Hall.



RECORD TOWN

3025 UNIVERSITY DR. SOUTH

FORT WORTH'S NO. 1 RECORD STORE

## Do You Think for Yourself? (THIS TEST WILL GIVE YOU A CLUE!\*)



1. If your parents exhibited "baby pictures" of you to a friend, would you be (A) embarrassed? (B) merely interested in your friend's reaction? (C) just plain annoyed?

A ☐  
B ☐  
C ☐



2. You are making a speech—and suddenly find you have a large hole in your clothes. Would you (A) excuse yourself and leave? (B) pretend you didn't know the hole was there and finish the speech? (C) cover up the hole with a handkerchief?

A ☐  
B ☐  
C ☐



3. Would you rather have the characteristics of (A) U.S. Grant? (B) Thomas Edison? (C) J. P. Morgan?

A ☐  
B ☐  
C ☐



4. You have taken your date to dinner and find you haven't money to tip the waiter as well as take your date home. Would you (A) ignore the waiter? (B) take him aside and tell him you'll tip him next day? (C) tip him and walk your date home?

A ☐  
B ☐  
C ☐



5. Mathematics is your poorest subject, yet you are fascinated by the idea of being an atomic physicist. Would you (A) try to overcome your difficulties with math? (B) pick an easier occupation? (C) ask yourself if it's physics you like or its glamour?

A ☐  
B ☐  
C ☐



6. Your roommate is a nice person, but suddenly takes to asserting an ability to foretell the future. Would you (A) notify the authorities? (B) ignore the whole thing? (C) give him tests to prove to him he's wrong?

A ☐  
B ☐  
C ☐



7. Do you believe the maxim "It's a long lane that has no turning" is (A) a complete non sequitur? (B) a well-known fact? (C) an allusion to a common phenomenon?

A ☐  
B ☐  
C ☐



8. Would you rather have as a birthday present (A) something expensive? (B) something long-lasting? (C) something beautiful?

A ☐  
B ☐  
C ☐

9. In choosing a filter cigarette, would you (A) pick one that (A) claims it filters best? (B) merely says it tastes good? (C) gives you a thinking man's filter and a smoking man's taste?

A ☐  
B ☐  
C ☐

If you're the kind of person who thinks for yourself . . . you use judgment in your choice of cigarettes, as in everything else. Men and women who think for themselves usually smoke VICEROY. Their reason? Best in the world. They know that only VICEROY has a thinking man's filter and a smoking man's taste.

\*If you have checked (B) in three out of the first four questions, and (C) in four out of the last five . . . you think for yourself!

© 1959, Brown & Williamson Tobacco Corp.



Familiar pack or crush-proof box.

The Man Who Thinks for Himself Knows —

ONLY VICEROY HAS A THINKING MAN'S FILTER...A SMOKING MAN'S TASTE!



## Lights to Burn After 10 Says Safety Committee

The Safety Committee of the Evening College Student Council reports that the lights on the parking lots will be left on after 10 p.m. classes.

It had been an oversight that they had not been on previously, the Council divulged.

On the subject of more campus lights, Bill McCormick stated that it was almost impossible to add more lights because of the present cable system.

## TCU Group Will Attend Annual BSU Convention

The annual Baptist Student Union State Planning Conference will be held at Latham Springs Baptist Encampment Friday through Sunday.



DR. E. L. PROSS

# Dr. Pross Honored

By JOHN CANTWELL

Pi Kappa Delta, national fraternity for forensics and speech educators, has awarded Dr. Edward L. Pross a special plaque in commemoration of his services to the fraternity and to the speech education field.

Mrs. Pross accepted the posthumous award for her husband at the Pi Kappa Delta national convention which was held at Bowling Green State University, Bowling Green, Ohio, last month. Glenn W. Capp, chairman of the Baylor speech department and long-time friend of Dr. Pross, made the presentation to Mrs. Pross.

In connection with his work in the fraternity, Dr. Pross served as one of their regional governors, governing the Province of the Lower Mississippi which includes Texas, Oklahoma, Arkansas and Louisiana. However, upon his death in 1957, he left unfinished his 2-year term of office.

Students, friends and colleagues will long remember Dr. Pross as a zealous worker whose

efforts resulted in a fine speech department for the University as well as a special on-campus clinic for the care and study of mentally retarded children.

Since his untimely death, Mrs. Pross has received literally hundreds of letters from his many friends all over the nation expressing sorrow at the passing of this fine professor.

In addition to the plaque received by Mrs. Pross, Pi Kappa Delta presented the University with a duplicate which will hang in the main lobby of the Fine Arts Building.

## Associate Director Is Appointed

J. Frank Crow, B.A. '45, and former minister of churches in Childress and Kilgore, will return here this month as associate director of church relations.

Since 1955, he has been associate general secretary of the Missouri Association of Christian Churches.

In his new post, Rev. Crow will work with Dr. Lee C. Pierce, TCU's director of church relations, in the Texas-Louisiana-New Mexico area.

Born in Bonham, the new TCU staff member graduated from high school there. He took his degree from TCU, where he was a class favorite, member of band and orchestra, and business manager of the yearbook.

In 1945-1947, he was minister of the Christian Church at Child-

## Hearn Tells of War Orphan Education Aid

The Veterans' Affairs office, under the management of Joe Hearn, announces the availability of the War Orphans Education program. This program offers financial aid for the education of sons and daughters of specific deceased war veterans.

The veterans of WW I, WW II or the Korean conflict, must have died in service or from service-connected conditions after their discharge. The discharge must have been under honorable conditions.

As a general rule, a person must be between 18 and 23 years of age to attend school under the War Orphans program. In certain instances, it is possible to begin school before age 18 and to continue after 23. A person cannot enroll while he or she is in the Armed Forces.

Each candidate is provided help by a professional counselor. Pointing toward a definite educational or vocational goal, each eligible person may receive up to 36 months of education.

The first step in claiming assistance is to file an application with the nearest VA office. Applications are available here on the campus. Once this step is approved, the VA will inform the person that he or she is ready to begin school.



## MIFFED MISS

Miss Mary Littlejohn, Fort Worth junior, doesn't seem happy that she's the innocent victim of a strange kind of spring fever that's hit the campus. See Story on Page 6.

## DSF Will Present 'J.B.' Saturday

Disciples Student Fellowship drama group will present a reading performance of Archibald MacLeish's play in verse, "J. B." at 7 p.m. Saturday in Fellowship Hall of University Christian Church. Admission is free.

Cast in the starring roles are Gary Hamrick, Dallas sophomore; Edmond DeLette, New Orleans, La., graduate student; Dick Williams, Scranton, Pa., junior, and Dorothy Kemper, Phoenix, Ariz., junior.

The play currently is running on Broadway and is about a modern Job. Saturday Review has said that "J. B." may well become one of the lasting achievements of art and mind in our time.

## Dean Moore Re-elected To Standards Committee

Dean Jerome A. Moore was re-elected to the Standards and Classifications committee of the Association of Texas Colleges. He will serve on the committee for a period of three years.

Improvement in your  
Studies and Test Grades  
Through the Use of  
HYPNOSIS

H. T. OWENS  
CONSULTING HYPNOTIST

3033 Cockrell, Suite 4  
(Off Campus)

WA 3-8817

ED 2-4234



served by candlelight in charming private booths

ITALIAN INN

3132 E. Lancaster

Member Diners' Club

★

Recommended by Duncan Hines

JE 5-9117

## ACE Elects 6 Officers

The Association for Childhood Education has elected officers for 1959-60. They are Besty Loader, president; Marion Wiley and Marilyn Foster, vice presidents; Dianne Emmons, secretary; Deana Barton, treasurer, and Lou Ann Ramey, publicity.

## Special Offer to TCU Students

# Car Wash, \$1<sup>00</sup>

MONDAY THROUGH FRIDAY ONLY

In response to your requests, Quick-as-a-Wink Car Wash is happy to offer to TCU students a special rate of \$1 for our regular 3-minute car wash. This offer is good Monday through Friday of each week—no tie-in purchase required. All you have to do is show your activity card to our cashier.

★

Please note: The special price of \$1 is good only Monday through Friday—the regular price of \$1.50 applies on Saturdays and Sundays.

★

As a new service, Quick-as-a-Wink now carries Texaco gas and you can now charge gas and/or car washes on your Texaco credit card.

## QUICK-AS-A-WINK CAR WASH

1730 UNIVERSITY DR.

In Forest Park, Just North of Trinity River Bridge

Presenting

## THE NEW TCU CLASS RING by HALTOM'S

A beautiful Texas Christian University Ring made by Haltom's is a lifetime link with your alma mater that will recall many treasured memories. When you choose a Haltom Class Ring, you choose the official TCU Ring... and you get outstanding craftsmanship, beautiful design and excellent service.

## HALTOM RINGS OFFER BETTER QUALITY—AT LOWER PRICES

Haltom Rings are of durable 10-Karat Gold. Each ring is die-struck for maximum beauty and longer wear. A choice of stones including synthetic ruby, blue sapphire or amethyst is available. You may also select between dark military gold or two-tone rose-gold finish. Three initials are engraved inside the ring at no extra cost.



Man's 12 Pennyweight Ring	\$27.50
Man's 12 1/2 Pennyweight Ring	\$24.25
Lady's 5 1/2 Pennyweight Ring	\$19.50
Class Pin with Year or Degree Guard	
Large....	10.50
Small....	9.50
Engraving:	
Greek Letters, each.....	1.75
Black Letters, each.....	2.25
Emblems (Masonic, Shrine, Elk, etc.).....	3.75

Prices are subject to 10% Federal Tax.

Samples on display — orders accepted at  
THE UNIVERSITY STORE, STUDENT CENTER BUILDING



## EDITORIAL COMMENT

### Relief From Election Woes

The newly enacted election code should provide student voters a welcome relief from the long, customary plague of runoffs, special elections and ill-timed, heretofore poorly publicized balloting.

Five points of the code which had been held by the Student Court to contravene the Student Association Constitution were approved by referendum Friday.

The code will soon have a chance to prove its worth, for upcoming spring elections will furnish a quick test for its effectiveness.

Election committee members provided for as many contingencies in the code as they could conceive in the five months spent formulating it. Representation in Student Congress will be improved by the new code.

The measure looms as the current Congress' most significant accomplishment—but the legislators will have served a sufficiently valuable purpose if they have fashioned a workable election system superior to the antiquated one by which they, themselves, were elected.

### 'TCU Is Middling'

Editor, The Skiff:

I have been following the current discussion in The Skiff between the Winkelites and the Beckhamites over the status of the fine arts in your paper. I think that those of The Skiff have missed the point of the criticism. It seems to revolve not only around the content of The Skiff but also around the concept of the purpose of an university education. I feel that, among other things, the process of education is one of developing better taste, and that the liberal arts school should provide opportunities for this development. Many of us feel TCU fails to do this.

To my thinking, too often this school follows an unexpressed and middling sense of values, part of which may be justified by economic reasons. The general public isn't going to risk their money on excellence, but on substantial mediocrity. Such a system of values allows shoddy and unbalanced work and behavior simply because graceful and excellent things are hard to achieve, taking self-discipline and energy. When one is surrounded by luxury he becomes lazy. Material success, crude masculinity, and submission to social acceptability become virtues. What is aggravating is that such a sense of value affects the student, offering no incentive to the betterment of taste. Excellence, on the other hand, usually demands that he be intellectually energetic.

The responsibility for the lack of incentive rests upon every individual student and faculty member, but many of these are irresponsible. Those who are responsible must take action. I'm talking of teachers who have the

courage to assign significant and hard work, and students who can accept such a task. I'm talking of the bookstore which should stop selling Ricky Nelson and branch out, selling even a greater variety of books than they do. I'm also talking about The Skiff and its attitude toward news and editorial comment. I agree with Mr. Ford's letter calling for editorial criticism and comment on historical, political, and art events, be they on or off the campus. I care about the liberals in Congress! The political and historical comments would help give a good incentive to the student's scholarship. The increased interest in art would temper his scholarship with the qualities of art. He would be challenged to work for organization, balance, and propriety. His taste would develop and he'd gain in education.

It seems that the first thing to decide is that good reporting necessarily is not providing the public with what they want but also with what they need. TCU if it is to be worthy of being an educational institution, does not need any more mediocrity. It needs grace and good taste. The columns of your paper often imply otherwise.

Sincerely,  
TOM SCHMIDT.

### Theatre Major Speaks

Editor, The Skiff:

I am a theatre major and I wanted to thank you for the fine articles you gave Fallis Players when we did "Snow White."

## The Skiff

The Skiff is the official student publication of Texas Christian University, published semiweekly on Wednesday and Friday during college class weeks. Views presented are those of the student staff, and do not necessarily reflect administrative policies of the university. Represented for national advertising by National Advertising Service, Inc., 420 Madison Ave., New York, N.Y., Chicago, Boston, Los Angeles, San Francisco. Entered as second-class matter at the post office at Fort Worth, Texas, on Aug. 31, 1910, under the act of March 3, 1879. Subscription price, \$3.00 a year in advance.

Editor-in-Chief ..... Pat Beckham  
Associate Editor ..... Gail Beckham  
Business Manager ..... John T. Farr  
Sports Editors ..... Lee Grimsley, Bob Schieffer  
Photo Editor ..... Harvey Little  
Faculty Adviser ..... E. H. Ferguson, Jr.

REPORTERS—Judy Arnst, Bob Bullock, John Cantwell, Mike Davis, John Farr, Jan Ferguson, George Gould, Jack Harkrider, James Harper, Bob Hughes, Kirsti Knudson, John Morehart, Beth Morris, Gordon Pynes, Bob Reinhold, J'Neil Rogers, Bob Schieffer, John Shields, Doris Stanley, Ann Stubbs, Lynn Swann and Kathryn Younger.



## LITTLE MAN ON CAMPUS



"OH, HE'S OUR MOST POPULAR HISTORY TEACHER ALL RIGHT, BUT I HEAR HIS STUDENTS DON'T LEARN MUCH FROM HIM."

## SW Campus Confidential

By JOHN SHIELDS

### TEXAS A&M—

Concerning the Kingston Trio's Monday night visit to A&M:

"We feel very fortunate in presenting the Kingston Trio again because we have found that college students are interested in seeing the hottest attraction in the U.S. today."

The trio has performed for nearly every SWC school except TCU, but who's to say what TCU students are interested in.

"A Medical View of Sex and Life" will be the subject of a talk tonight by the director of Student Health Services. His talk will concern dating and marriages.

The Aggies have really let this brotherhood idea get out of hand.

### SMU—

A news column reviewed Dr. Robert Rauch's book, "How To Get Out of Bed and Get to Class in Five Minutes," and it spoke of the assumption Dr. Rauch had about students desiring to go to class. "This assumption gives the book an almost fairy-tale-like attitude, an attitude which is particularly appealing to many SMU students."

That's all right, fellows, we've got a few students who like the fairy-tale type, too.

### TEXAS TECH—

A notice from the campus paper stated:

"Anyone interested in amateur radio is invited to the Tech Amateur Radio Club meeting at 7 p.m. Thursday in the MARS radio station, located in barrack X-8."

Sounds as if the station is "really way out."

### TEXAS—

Dr. K. Young was handing out his first quiz to his Geology 601b class.

"You know," he said, "these machine-graded quizzes are really funny. One time I sent in the key and it came back graded 97."

The story of my life—the right key in the wrong hole.

Robb K. Burlage, past editor of the Daily Texan, who was expelled "for too many traffic violations," has been commended by letters to the editor for his courageous battle against certain administration policies. He was planning a new campaign when the numerous-ticket situation popped into view.

Wonder how Lee Grimsley stands with the Security Office here, since he's oft quoted certain SWC coaches about TCU's lack of a field house?

### ARKANSAS—

During an important motion picture luncheon meeting recently, the president asked for all in favor to say "Aye." "It's unanimous," was his decree. Suddenly, a "No" was heard. An explanation was asked for and the meek voice came from the secretary who couldn't spell "unanimous."

So whatta you want for free anyway, Merrian Webster's sister?

### BAYLOR—

"The Big Uns Association will eat lunch at noon today in the Bear of the Baylor Student Union."

Wonder what the Bear will have to say about this?

the Greeks have for summarization of Fine Arts goings on (for, after all, the Fallis Players, Theatre Department, etc.) are just as much a part of TCU as any other school or organization, but I do think that no part of the Fine Arts Department has been lacking for good publicity this year.

I, for one, am more than grateful for the interest you have shown the Fine Arts Department, especially the Fallis Players and the Theatre Department.

Sincerely yours,  
NANCY C. ERWIN.

### Library Jab, Again

Editor, The Skiff:

When will we get the air conditioning turned on in the Library? Three seasons of the year the temperature inside the Library remains warmer than outside; the windows act as a thermostat, being lowered in winter to heat the inside and raised in the fall and spring to cool it.

I notice that the air conditioning is being used in the hub of campus activity—the Student Center, so that pool players and card sharps can play in comfort.

I realize that the Library is less popular than the Student Center, but as long as we have air conditioning, let's put it to use in some of the "minor" buildings on campus.

Yours Truly,  
DAVID HARDCASTLE.

### Let's Start Something

Editor, The Skiff:

It has occurred to me that the Southwest is continually getting the short end of the stick in just about everything from badminton to best-dressed women.

When, if ever, is Texas and the surrounding area going to band together like they do up North? When the top teams in the nation are selected on the wire service and coaches' polls, Yankee teams seem always to dominate regardless of their record. When the all-America teams are selected, the Northern writers seem to casually overlook most of the cream of the Southwest.

It comes to my mind: how could TCU's candidate expect a fair chance in this "Best-Dressed Coed" contest of a few weeks back?

How about letting us know how that came out. Also, how about The Skiff using some of its "off-campus" influence to try to get the writers and coaches of the Great Southwest to band together for a little more equal representation in everything?

Sincerely,  
JAMES DOUGLAS.

## YOURS TRULY,

I also want to thank you for the ballet writeups, although I feel they were a little one-sided.

I wanted you to know your space was not overlooked and that it was appreciated.

Yours truly,  
PEGGY LEUTY.

### Thanks, But More Please

Editor, The Skiff:

I am not a Fine Arts major but I do have a lot of very good friends in the Theatre Department. I am also a member of the Fallis Players, and I might mention that I am very proud of this.

We all do thank you for your advertisement and interest in the Fallis Players' productions.

However, I think a little more interest should be shown other things in the Fine Arts Department.

After all, why shouldn't we get as much publicity as the social activities, we certainly are the center of the cultural side of TCU.

Sincerely,  
PAULA RAMSEY.

### Liked German Feature

Dear Mr. Beckham:

I would like to thank you for the interesting article on Friedrich Schiller, the German poet of freedom, who's bicentenary is celebrated this year throughout the world.

It is a very good thing that—relevant to the showing of his Mary Stuart by our Drama Department—interest was focused upon this true fighter of universal freedom whose enthusiasm for human rights is so actual today.

The article in The Skiff is a nice memorial for the Schiller-year, interestingly presented by Miss Ann Stubbs.

Yours sincerely,  
L. JOHN PARKER.

### Another Defender

Dear Pat:

In regard to the controversy raging on campus as to whether the Fine Arts Department is getting too much or not enough publicity, I would like to say that I think you have done a wonderful job of publicity for Fine Arts events.

I do agree with Mr. Winkel that we need a column such as

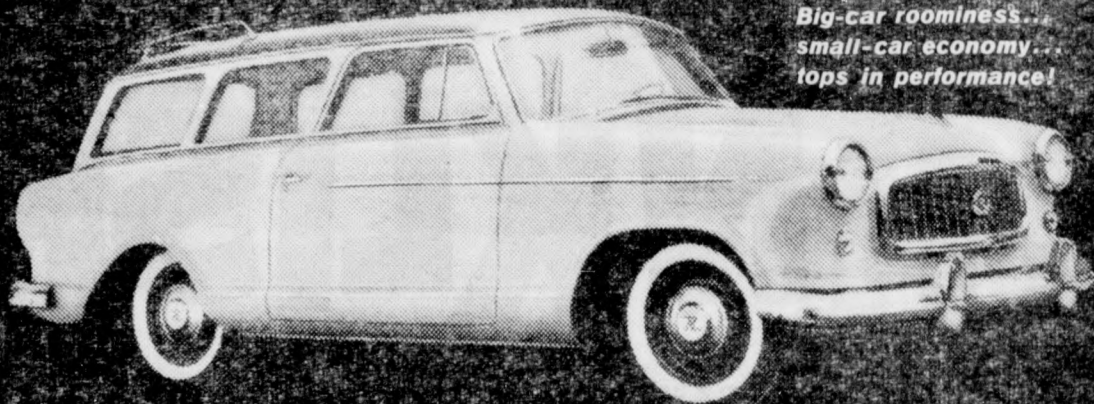




# COLLEGE PUZZLE CONTEST

## FOR STUDENTS AND FACULTY MEMBERS

### 2 GRAND PRIZES



*Rambler "American"!*  
Big-car roominess...  
small-car economy...  
tops in performance!

### WIN A RAMBLER STATION WAGON!

**LIGHT UP AND LIVE IT UP!** 3 great cigarettes offer you 627 chances to win! So pick your pack—save the six wrappers—and get going! It's crossword puzzle fun and real smoking pleasure all the way!

**ENTER OFTEN—HAVE FUN—AND WIN!** But think carefully! This puzzle is not as easy as it looks. At first the DOWN and ACROSS clues may appear simple. There may appear to be more than one "right" answer. For example, the clue might read: "Many a coed will be given her best date's P-N." Either "I" (PIN) or "E" (PEN) would seem to fit. But only one answer is apt and logical as decided by the judging staff, and therefore correct. Read the rules carefully. ENTER AS OFTEN AS YOU WISH. Good luck!

#### RULES—PLEASE READ CAREFULLY

1. The College Puzzle Contest is open to college students and college faculty members except employees and their immediate families of Liggett & Myers and its advertising agencies.

2. Fill in all missing letters . . . print clearly. Use of obsolete, archaic, variant or foreign words prohibited. After you have completed the puzzle, send it along with six empty package wrappers of the same brand from L&M, Chesterfield or Oasis cigarettes (or one reasonable hand-drawn facsimile of a complete package wrapper of any one of the three brands) to: Liggett & Myers, P. O. Box 271, New York 46, N. Y. Enter as often as you wish, but be sure to enclose six package wrappers (or a facsimile) with each entry. Illegible entries will not be considered.

3. Entries must be postmarked by midnight, Friday, May 29, 1959 and received by midnight, Friday, June 5, 1959.

4. Entries will be judged by the Bruce-Richards Corporation, an independent judging organization, on the basis of logic and aptness of thought of solutions. In the event of ties, contestants will be required to complete in 25 words or less the following statement: "My favorite cigarette is (Chesterfield) (L&M) or (Oasis) because . . .". Entries will be judged on originality, aptness of thought and interest by the Bruce-Richards Corporation. Duplicate prizes will be awarded in event of final ties. Illegible entries will not be considered. By entering all entrants agree that the decision of the judges shall be final and binding.

5. Solutions must be the original work of the contestants submitting them. All entries become the property of Liggett & Myers and none will be returned.

6. Winners will be notified by mail as soon as possible after completion of the contest.

7. This contest is subject to all Federal, State and local laws and regulations.

#### CLUES ACROSS:

- These may indicate that a nation is prepared to wage war in the air.
- Some college students.
- When at . . . . . Light up an Oasis.
- Sinking ship deserter.
- Plural pronoun.
- One expects . . . . . discussions in a sociology class.
- A student's careless . . . . . might annoy a short-story instructor.
- Initials of Uruguay and Denmark.
- Germanium (Chem.)
- Nova Scotia (Abbr.)
- It probably would count when you pick a horse to bet on.
- Sometimes a girl on a date must . . . . . into her pocketbook to help pay the tab.
- The muscle-builder's . . . . . may fascinate a poorly developed man.
- Chemical Engineer (Abbr.)
- Campers will probably be . . . . . by a forest fire.
- When starting a trip, tourists usually look forward to the first . . . . .
- At home.
- Literate in Arts (Abbr.)
- Familiar for faculty member.
- Associate in Arts (Abbr.)
- One could appear quite harmless at times.
- Reverse the first part of "L&M".
- What will soon appear in a bombed-out city.

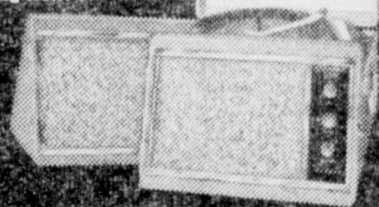
#### CLUES DOWN:

- The beginning and end of pleasure.
- A rural . . . . . can be inviting to a vacationist.
- Second and third letters of OASIS.
- When one is . . . . . packed, it could be exasperating to remember a few articles that should be included.
- It would pay to be careful when glass is . . . . .
- Grounds to relax on with a mild CHESTERFIELD.
- Author . . . . . Ambler.
- District Attorney (Abbr.)
- A . . . . . from Paris should please the average woman.
- An inveterate traveler will . . . . . about distant lands.
- . . . . . are hard to study.
- Stone, Bronze and Iron . . . . .
- How Mexicans say, "Yes".
- All L&M cigarettes are " . . . . . high" in smoking pleasure.
- May be a decisive factor in winning a horse race.
- Initials of Oglethorpe, Iona, Rutgers and Emerson.
- United Nations Organization (Abbr.)
- Golf mound.
- Colloquial for place where the finest tobaccos are tested for L&M.
- Poet Laureate (Abbr.)
- Filter ends.
- What Abner might be called.
- Bachelor of Education degree.

### 25 SECOND PRIZES:

#### COLUMBIA STEREOGRAPHIC HI-FI SETS

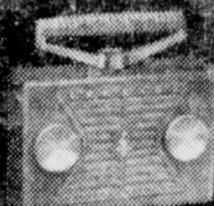
"Big Stereo" styled  
engineered for the most  
exacting taste



### 100 THIRD PRIZES:

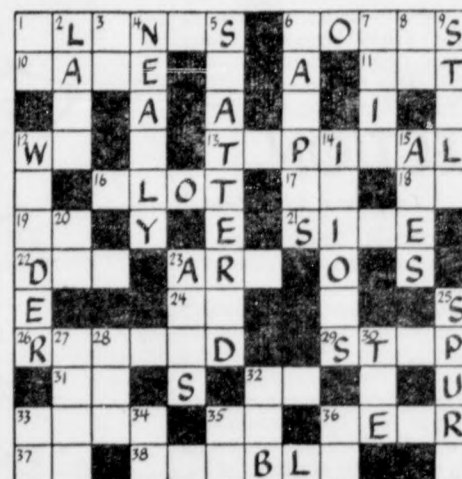
#### EMERSON TRANSISTOR RADIOS

Packed with power  
plays 1500 hrs. on 1 set  
of batteries



### 500 FOURTH PRIZES:

Cartons of America's finest cigarettes



#### PRINT CLEARLY! ENTER AS OFTEN AS YOU WISH

Mail to Liggett & Myers, P. O. Box 271, New York 46, New York. Be sure to attach six empty package wrappers of the same brand (or facsimile) from Chesterfield, L&M, or Oasis cigarettes.

Name \_\_\_\_\_

Address \_\_\_\_\_

College \_\_\_\_\_

This entry must be postmarked before midnight, May 29, 1959, and received at P. O. Box 271, New York 46, New York, by midnight, June 5, 1959.

© Liggett & Myers Tobacco Co.



## Though It's Hard to Believe

# Boys Slight Girls In Favor of Autos

By LYNN SWANN

In the spring a young man's fancy lightly turns to thoughts of hot rods.

Whether the fellow's sweetie is a Hollywooded "A" model with a gutted muffler or a lowered Impala with dynaflo, his attentions quickly shift to high as he begins to polish, wash and, in general, court his car.

The only things that are dropped, gals, are not necessarily couples; for cars are dropped, or lowered in front or back, to achieve a longer line.

Men seem to prefer cars, like their women, without much mileage, unfickle ones that stick to the same driver whose signals they read obediently.

More than one TCU male has stripped gears over the many sports cars on campus. Several students own Chevrolet Corvettes and Thunderbirds while others pilot foreign models such as English Austins, German Fords and more elaborate Mercedes.

Disabled students have their own custom-built autos which can be manipulated with ease by a handicapped person.

No matter what make or model, the car's owner usually is proudly wooing his wagon come April, when he can don his Levis and examine the precious vehicle that only he knows intimately.

The hot rodder may begin his spring cleaning by polishing the grill's chrome 'til it shines like a young lady's blushing cheeks. He might then travel to her headlight eyes which illumine adoringly. Though "boys don't

make passes at girls who wear glasses," some 4-eyed cars claim double headlights.

Wrap-around windshields, like wrap-around dresses, seem to be stylish, and some car owners prefer that their autos have fender skirts. (What has Dior got that Mercury hasn't?)

After a cleanup job a young man might improve the mechanics of his car. One trick is to pull in the cam shaft to adjust to the ratio of wheel revolutions, much like women pull in their waists to adjust to the ratio of revolutions of h.p.s. (hip per step).

The amateur mechanic might then set up his "swinging rod" in order to scratch off faithfully. When a gal's fellow does this she might as well scratch him off her list, for by that time he's fallen hook, gas line and sinker for his sweetie with the smooth-running purr.



## Lyles to Attend Biology Meeting

Dr. Sanders T. Lyles, professor of biology, and J. E. Barnett, graduate student, participated in the annual meeting of the North Texas Biological Society at SMU Saturday.

Barnett was one of 10 graduate students to present a paper to the Collegiate Section. His subject was "A Survey of the Odonate of a 52-Acre Tract of Land Near Grapevine, Texas."

Faculty members and students from SMU, Baylor, North Texas State College, Texas Women's University, Arlington Heights High School and Ennis High School as well as TCU participated on the program.

## ENGINE ENTHUSIAST—

Miffed Miss Mary Littlejohn (See Page 3) frowns because she feels strictly "second fiddle" when the men (including John McCraw, Farmersville sophomore, shown here) seem to be spending too much time tuning up the cars.

# THINKLISH



English: CAMPUS TOUGH GUY

**Thinklish translation:** This character belongs to the beat generation, as any black-and-blue freshman can testify. When he cracks a book, it ends up in two pieces. His favorite subject: *fistory*. Favorite sport: throwing his weight around. Favorite cigarette? Luckies, what else? Puffing on the honest taste of fine tobacco, he's pleased as Punch. If you call this muscle boulder a *schooligan*, bully for you!

English: SCRATCHING DOG



Thinklish: FLEAGLE

ROBERT O'BRIEN, WISCONSIN STATE COLL.

English: ILL TYRANT



Thinklish: SICKTATOR

JANE SLEMMONS, TARLETON STATE COLL.

English: UNHAPPY MARRIAGE



Thinklish: SPATRIMONY

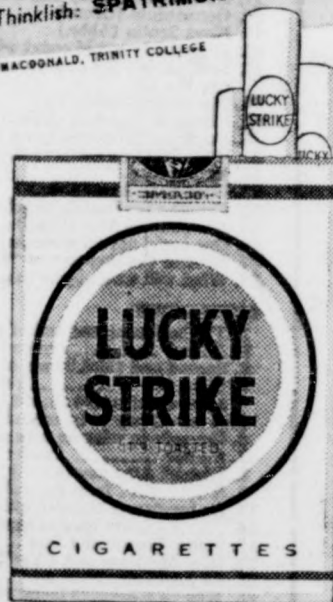
ALAN MACDONALD, TRINITY COLLEGE

English: SPRING CLEANING



Thinklish: MOPERATION

ALAN KOLOSEYKE, CORNELL



## HOW TO MAKE \$25

Take a word—celebration, for example. With it, you can have a football rally (*yellebration*), a gossipy bridge party (*tellebration*), or a clambake (*shellebration*). That's Thinklish—and it's that easy! We're paying \$25 for the Thinklish words judged best—your check is itching to go! Send your words to Lucky Strike, Box 67A, Mt. Vernon, N. Y. Enclose your name, address, university and class.

Get the genuine article  
**Get the honest taste  
of a LUCKY STRIKE**

© A. T. Co.

Product of The American Tobacco Company—"Tobacco is our middle name"

## Home Economics Group Elects Fall Officer Slate

Chi Beta, TCU's Home Economic Sorority, recently elected new officers for the fall semester.

The new officers are president, Barbara Jones, New Orleans senior; vice president, Betty Herrin, Palestine sophomore; secretary, Cinda Ellis, Lancaster freshman; treasurer, Ruth Edberg, Denver, Colo., sophomore; reporter, Linda Haggard, Plano freshman, and historian, Sue Stuter, Dallas freshman.

## ELECTION

Continued from Page 1

have to attend. Grade index requirement is 2.0 for a minimum of 44 hours.

Summer Congress members must be enrolled in the coming summer session and have a 2.2 grade index for all college work.

All candidates are required to pay a \$10 fee. It is refundable after election to candidates who comply with all election rules. Failure to observe the election code will result in disqualification and forfeiture of the fee.

Bob Lutker's



"The Finest in Floral Service"

3105 Cockrell (At Berry)  
WA 4-2211



## From Suez to Singapore

# Freshman Recalls Travels of Family

By ANN ENGLISH

During World War II, Madeline Clignett, Fort Worth freshman, spent nearly four years in various Japanese prison camps.

The lack of food is the dominant memory she has about this experience. At times one potato a day was the diet.

Housing conditions also were bad. Twenty-five people were packed into a 5-room bungalow. The houses were grouped together and the captives were allowed to walk around inside the enclosure, fenced by bamboo and barbed wire.

"We could not even see outside the wall," she says.

"Every day guards checked all the houses and were on both the inside and outside of the walls. One day, three had gone to buy something and when they got back, the guards got suspicious. One of the men panicked and stated to run. The guard fired and killed him. I was watching," Madeline said.

"They just decided to," was her reply when asked why her family was moved to another prison camp in town. "Some other prisoners coming in, I guess."

"The town is rather large and

when the Japanese took over, the best districts were turned into headquarters and the rest sectioned into small camps."

Before being taken captive, Madeline, though she was only a few years old, remembers hearing bombs and "then we would run out of the house and hide in backyard cellars and wait and wait and wait, until all the noise was over. Bombs dropping is a horrible, frightful sound."

After the war ended, with the help of the Red Cross Madeline's family was reunited, but their troubles were not over.

In 1945 came the Indonesian revolution. At first the Japanese revolted against the Indonesians, then the Indonesians revolted against the Dutch.

Madeline, who is Dutch, spent many years in Jakarta, Indonesia, where her father was president of a governmental bank. The Clignett family has lived in Amsterdam and The Hague. They also have visited Ceylon, Colombo, Port Said, Buckingham Palace and Singapore.

Of Singapore, all that she could remember was the filthiness of the harbor.

At Ceylon, the family visited

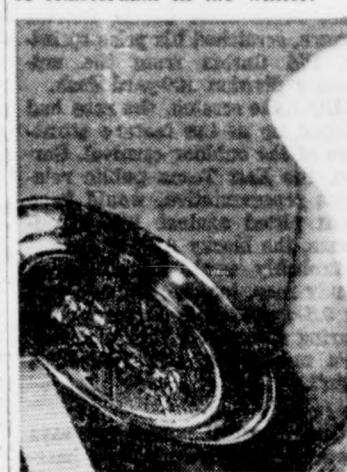
the Buddhist temple. Madeline was very impressed by the "huge, huge" and intricately sculptured statue of Buddha. She also remembers having to enter the temple minus her shoes.

Her only memory of Port Said (the Suez Canal Zone) is that of small Arabian boys diving for coins.

Madeline described the Rock of Gibraltar as "really impressive, and like a triangle or an island where you would go for a honeymoon."

Of Buckingham Palace, Madeline said only that the guards were immovable.

While living in Holland, Madeline remembers wearing wooden shoes and skating on the canals of Amsterdam in the winter.



In 1954 Henri, Madeline's older brother, came to Fort Worth to attend TCU and in 1957, the rest of the family joined him.

Madeline, who has black hair, brown eyes, and dark skin is majoring in secondary education. She attended Paschal High School in her sophomore and senior years. (She skipped her junior year.)

On education in Holland, the attractive freshman said that it was much harder. In junior high everyone was required to take 14 subjects per year.

Cute, Too!

## Farrar Announces Chapel Speakers

The Rev. James A. Farrar, director of religious activities, has released the list of speakers who will participate in Chapel services during the remainder of the semester.

Scheduled to speak Tuesday, April 21, is Professor Glenn C. Routt, associate professor of theology at Brite College; April 28, Rev. James A. Farrar, director of religious activities; May 5, Professor William D. Hall, associate professor of missions at Brite College; May 12, Dr. Harold L. Lunger, professor of Christian ethics, also of Brite College; and May 19, Dr. Elmer D. Henson, Dean of Brite College.

## Ex-Student Earns Wings

Marine Capt. Joe W. Shirley, son of Mr. and Mrs. Henry W. Shirley of 811 Avenue B, N.W., Childress, Texas, and husband of the former Miss Carolyn S. Byrd of 8418 Craighill, Dallas, received his "Wings of Gold" of a Naval Aviator at the Naval Air Station, Pensacola, Fla.

A graduate of Texas Christian University, he entered the service in September, 1953.

## Geologists Plan Weekend Field Trip in Oklahoma

Dr. Edward Heuer, associate professor of geology, and Dr. Arthur Ehlmann, assistant professor of geology, are going with a group of approximately 25 students on a field trip near Ardmore, Okla., Saturday and Sunday.

On Saturday they will study the sedimentary rocks on the west end of the Arbuckle moun-

tains. Sunday they will study granite rocks on the eastern end of the range. The group plans to stay overnight in Ardmore.

The trip has been arranged primarily for Dr. Ehlmann's "Petrology" course and the "Sedimentary Petrology" course being taught by Dr. Heuer.

"All geology majors, however, are invited," Dr. Ehlmann says.

### Style Tips from the

CLYDE CAMPBELL UNIVERSITY SHOP  
(one of a series)

## How to Wear a Half-Sleeved, Button-Down Shirt

Lots of people are buying half-sleeved shirts these days, both sports and dress, and we feel a few comments on the wearing of same are in order.

The collar should be worn open—never buttoned—unless, of course, you are wearing a tie.

The collar points should be buttoned down to insure the proper flair to the collar.

The sleeves should not be worn rolled up; if you want to show your muscles, wear a knit shirt.

The tail should be worn tucked in.



**TUXEDO RENTALS**

See Us For All Formal Wear and Accessories

- FOR SALE
- FOR RENT

**A. HALLER**  
311 Main ED 5-9493

Switch from Hots to Snow Fresh Filter KOOL

KOOL ANSWER

## KOOL CROSSWORD

No. 23

- ACROSS**

  - Blow taken by scapegoats
  - Goes AWOL
  - Enraptured
  - Combe
  - Khan and others
  - She's a mixed-up dean
  - Isn't it time you — a Koal?
  - For the discriminating beer drinker
  - An almost famous fellow
  - The time there will be in the old town tonight
  - Mysterious non-Ava Gardner
  - Hand a line
  - Performed an elbow operation
  - New Haven-ite
  - Kind word for a prof
  - Break to follow up with a Koal
  - In — by oneself
  - Irish expletive (var.)
  - Which was to be demonstrated (L. abbr.)
  - Little Edith
  - How Miami got started
  - 2 doz. sheets of paper
  - French one (fem.)
  - Famous novel about Willie's kink
  - Take it off
  - Que — vous?
  - Your one and only. Easy now!
  - Vegetable that sounds like an accomplice-maker

**DOWN**

  - Cuba has a new
  - Author of 39 Across
  - Small units of whiskey (abbr.)
  - It has a tip, but no filter
  - Your no-degree days
  - What icy fingers make you do
  - Put on an act
  - The green stuff
  - Wonder drug
  - She's companion
  - Small town
  - Roman official who's mostly idle (var.)
  - What you must never say
  - California university
  - You may be here now
  - It's no Occident
  - This should make things even
  - Alone, no place to go
  - Why can't you behave?
  - Plant 'em now, dig 'em later
  - One German
  - Square at some colleges
  - He just wanted postage
  - Portuguese India
  - Kind of Arts (abbr.)



SWITCH FROM HOTS TO Snow Fresh FILTER KOOL

As cool and clean as a breath of fresh air.

Finest leaf tobacco... mild refreshing menthol — and the world's most thoroughly tested filter!

With every puff your mouth feels clean, your throat refreshed!

America's Most Refreshing Cigarette

... ALSO REGULAR SIZE KOOL WITHOUT FILTER!

© 1959, Brown & Williamson Tobacco Corp.





#### STILL SIZZLING

Frog golfer Charles Coody keeps his red-hot putter warm in preparation for the meeting with ACC today at Ridglea.—Skiff Photo by Harvey Little.

## Golf Four Set For ACC Play

TCU golf team, still in the thick of the fight for the SWC golf championship, takes a breather today when they tee off against Abilene Christian College at noon on the rolling fairways of Ridglea Country Club.

Hard-hitting Charles Coody, the big senior from Stamford, will be aiming for his sixth sub-par round in two weeks as he leads the TCU delegation against the Western Christians.

Texas Tech is still the fore-runner in the family chase, but only because they have played more matches than TCU.

The Frogs and Red Raiders squared off at 3-3 last week in Lubbock to keep their loss record clean.

"I feel we'll pick our feet up and move along," said Coach Tom Prouse, "we're not out of this thing yet."

The local Christians will be in it today when ACC makes their third eastern stop-off this week.

As host, the Frogs will have an opportunity to continue their burning pace, without fear of tarnishing their SWC record.

Coody, who has already captured three medalist honors and tied for one, is No. 2 man on the team behind All-America Don Massengale, defending SWC champ, but is looming as the conference man-to-beat.

"Ole Charlie is going good," remarked Prouse, "and his playing is superb. We just want him to continue that way."

Tomorrow, a day of rest is on tap for the foursome. Prouse will have his boys working at ease before Friday's conference battle resumes.

That will be when Rice visits TCU for the continuation of the SWC chase.

## SKIFF SPORTS

Page 8 Wed., April 15, 1959

### Mid-Week REPORT

By BOB SCHIEFFER

Thoughts while looking out the window:

Quite a surprise at the North Texas Relays last week, when East Texas State Coach, Delmer Brown, scratched his prize sprinter, Sid Garton from the university division 100-yard dash.

Until the scratch, the race had shaped up as the feature attraction of the outdoor carnival. Garton, the East Texas public relations representative, would have been pitted against Bill Woodhouse, the blocky ACC runner.

Probably would have been a dandy race, too. Woodhouse won in 9.5 and Garton has been declaring since early this year that he's unbeatable. (He said it; I didn't.)

Our baseball observer says crowds at this year's Frog baseball games have been so small that someone mistook the TCU diamond for La Grave Field.

If Lee Grimsley pursues his crusade for a new field house any further, they may have to name the place Grimsley Memorial when they build it.

Charles Coody, the tranquilized Frog golfer, is favored to wrest the SWC golf crown from teammate Don Massengale.

Two musts if he does: Putter must stay hot, temper cool.

TCU's All-America tackle Don Floyd traded football togs for regal finery this weekend. He reigned as King of the Fort Worth Mardi Gras.

An Arizona psychologist says TV westerns are therapeutic entertainment and appeal to the emotionally dispossessed. Well, that means all of us.

One of the tennis team's biggest fans is athletic director Dutch Meyer. He seldom misses a home match.

Pity the Boston Red Sox. A virus bug is running through the club, and half the team is afraid to get more than ten steps from the dugout.

Pat Beckham, who used to run track in high school, once remarked, "Why, Eddie Southern is just overrated. If I was in shape I would have outrun him 10 axe-handles." Caveman George Dinosaur once remarked, "The wheel is just a fad, it won't last."

## Aggie Hitter Climbs Over SWC Sluggers

Texas A&M's Garry Herrington wrested the SWC individual hitting lead from Rice's Richard Kristinik this week as the Owl star went only one for eight in two games.

Herrington is currently leading the circuit with a .455 average with 10 hits and 22 trips to the plate.

Kristinik's slump came suddenly. At one time, the Rice slugger was pacing the department with an .889 average. In his last two games, he skidded down to a .429 average.

The sudden cannonade by Herrington in going four for nine in the last two games, sent his Aggie club into the conference hitting lead.

The lone TCU batter hitting better than .350 is Frog Centerfielder Marshall Harris. The left-hander is clipping along at a .375 average.



Harris, lone Frog among royalty

#### TEAM HITTING

	ab.	r.	h.	avg.
Texas A&M	209	51	62	.297
Baylor	162	26	45	.278
Texas	163	30	44	.270
Rice	198	33	51	.258
TCU	198	30	50	.253
SMU	168	27	35	.208

#### HITTING LEADERS

Player, school	ab.	h.	2b.	3b.	hr.	avg.
Herrington, A&M	22	10	3	0	1	.455
Kristinik, Rice	21	4	4	0	1	.429
McDonald, Texas	19	8	1	0	2	.421
Carroll, A&M	22	9	2	1	0	.409

#### PITCHING LEADERS

Player, school	g.	ip.	w.	l.	so.	bb.	era.
Rodd, Texas	3	19	2	0	8	3	0.47
Timme, Rice	4	22	2	0	14	5	2.49
Sanderson, A&M	4	19	2	1	13	12	2.84



With Elmer it's been a long drought, but it's over now

## ELMER HAPPY, CONFERENCE WORRIED

By JOHN SHIELDS

Wog track coach Elmer Brown predicted his runners would shine, and they did.

The Wogs won the freshman-junior college division in the North Texas Relays this past weekend.

"The boys are just now coming around," Brown commented, "and in a couple of weeks they'll be in top shape. Then, people are really going to sit up and take notice."

While going about the job of adding validity to Brown's state-

ment, the frosh Purples encountered considerable resistance from Howard County JC.

Final standings: Wogs, 29 points; Howard County, 26.

Grabbing the Wogs' lone first place was lanky Bobby Bernard, the 20-yard high-hurdles ace, who posted a 14.9.

"Bobby will lead the way this year in the highs," Trainer-Coach Brown said, "and I think we can have him down to a 14.5 before the conference meet."

The chilly windswept oval of Fouts Field added overtones to the clockings.

"When it's windy and cool, the boys have a harder time getting warmed up," the former Olympics trainer said.

This might have been the reason for the flashy Bert Coan's second-place mark in the century race.

"Bert, in my estimation, is one of the nation's finest freshman sprinters," remarked Brown.

"He's a good, hard worker, loves to run, and he was just a yard behind SMU's (Jimmy) Barber."

Undoubtedly, Frog viewers were impressed by the 1:54.9 Bob-

by Barrett gave his team in the anchor lap of the sprint medley.

Jim Brock, sports publicity director for TCU, says this freshman pack made "the greatest showing we've had in many years."

Brown recalled several weeks ago, when the Wogs had a sudden flash of fury and posted the fastest time in the history of TCU for a mile relay.

It was in Austin, and the speedsters were clocked at 3:17.9. This, however, was good only for a fifth place behind first-place Baylor with 3:17.5.

Brown believes his boys will narrow that margin in the mile relay.

"Give us a couple of weeks of good weather and we should look strong in the mile before the big meet," he said.

Meanwhile, the Wogs' big brothers were in Denton for the same occasion.

The varsity team was credited with 18½ points, with senior Jon Cantrell the main point-maker.

Cantrell heaved the discus 140-6½ for first place and pushed the shotput 43-7 for a fourth.