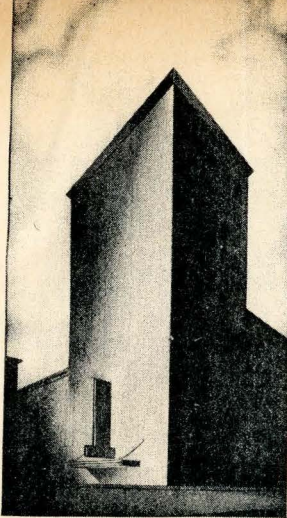


CABLE  
ADDRESS  
REGSYND



HENRY P. MARTIN, JR.  
SYNDICATE MANAGER

## THE REGISTER AND TRIBUNE SYNDICATE

DES MOINES, IOWA

August 3  
1944

Dear Sir:

We are enclosing proof of a five-column map prepared by The Chicago Daily News in co-operation with the Red Cross, which shows the approximate location of the various German prison camps.

This information has never been revealed before, and the map has an unusual degree of interest.

The map is available for your exclusive use in your territory at \$ 15<sup>00</sup>. Map will be forwarded immediately upon receiving your confirming wire.

THE REGISTER AND TRIBUNE SYNDICATE

P. S. We hope to be able to offer a similar map shortly, showing the location of Japanese prison camps. May we reserve it for you, also?